



**Stations**

**Stèiseanan**

## Introduction Ro-ràdh

The branding of ScotRail stations requires careful consideration. Along with the rolling stock, the hundreds of stations throughout the country are the most visible elements of Scotland's rail network.

However, unlike other elements, the focus is not on the identity – it's on the colour palette. A thoughtful and consistent use of colour will not only enhance the customer experience, and make stations safer and more friendly places to be, it will also reinforce the ScotRail brand.

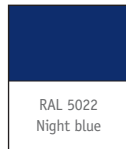


## Colour palette Raon dhathan

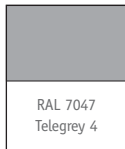
The colour palette for use in ScotRail stations is based on the core colours of the ScotRail identity. The range has been restricted to just five colours to encourage a consistent look across the network.

### RAL Colour palette – Stations

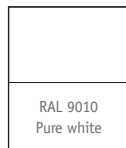
#### ScotRail blue



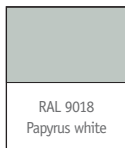
#### Telegrey 4



#### Pure white



#### Papyrus white



#### Pigeon blue



### Listed stations

Some stations in Scotland are listed by local authorities as buildings of historic importance. It is important to consult the relevant local planning office before applying the new ScotRail colour palette. Local regulations relating to conservation areas may also apply.

Other stations are painted in particular colour schemes simply by tradition. We recommend that where no local authority restrictions apply, the ScotRail colours should take preference over 'traditional' colour schemes.

However, 'line of route' considerations should also be taken into account. Where local authority rules apply to *some* stations on a route (eg, West Highland Line), it may be desirable and consistent to apply the same colour scheme to *all* stations.

### Paint colours

Paint colours are quoted by RAL numbers. Manufacturers may use different names for a given colour. To ensure the correct paint, always quote the RAL code. Special products may be required for certain applications (eg, rough-sawn timber treatments, anti-climb paints, anti-graffiti paints, etc).

## Safety and Accessibility Sàbhailteachd is Ruigsinneachd

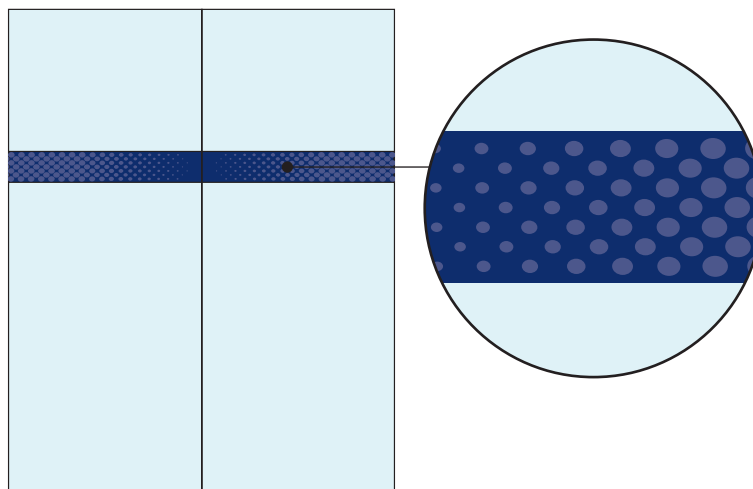
Although the appearance of stations is important, these principles have been devised with passenger safety as a priority:

- Exit routes must be clearly defined
- All safety items (eg, handrails) must have visual standout
- Potential obstructions (eg, clear panels, columns) must be clearly visible
- Information must be clear, legible and unambiguous

### Transparent obstacles

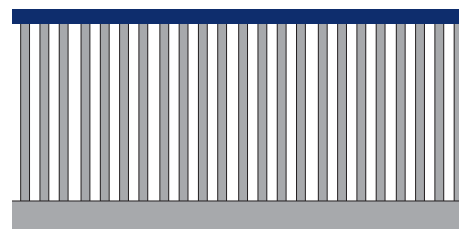
To aid the visually impaired, transparent obstacles on or along the main routes used by passengers, consisting of glass doors or transparent walls, must be marked with a solid band, measuring 150mm, at a height of 1500mm. The solid bar must contrast with the background visible through the panel.

Using a band similar to the one at the top of this page is a good way of reinforcing the ScotRail brand. It's created by placing the 'vignetted dots' graphic (as a 70% tint of ScotRail blue) on a solid ScotRail blue background.



### Handrails

For visual stand-out, handrails must contrast with both the surrounding wall colours and the rest of the structure (eg, footbridge, barrier).

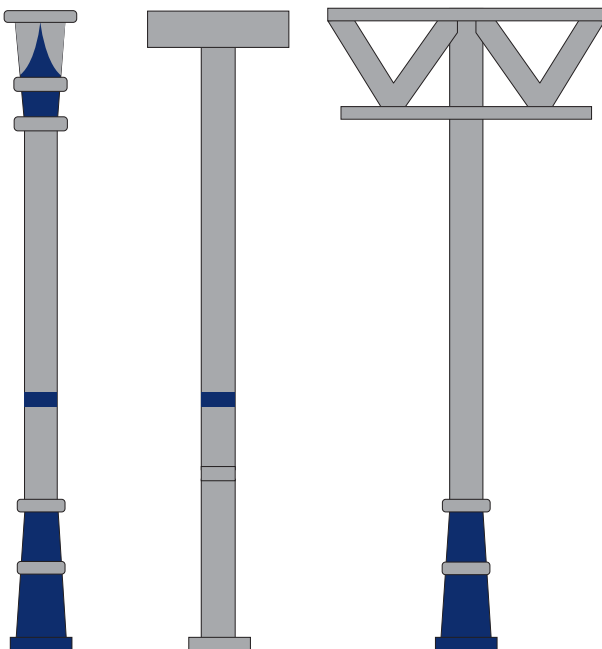


Many elements of station design will be governed by legislation related to access and safety. It will be the responsibility of the contractor to ensure their interpretation of our guidelines, and the final design, satisfies the relevant regulations.

## Safety and Accessibility Sàbhailteachd is Ruigsinneachd

### Columns

Where columns or poles are placed on main pedestrian routes, they should contrast with the background colour and must have, as a minimum, a contrasting horizontal band 150mm wide placed at a height of approximately 1500mm.



### Walls (interior and exterior)

Walls should not have glossy surfaces. They must be in a colour that contrasts with the floor, so boundaries are clearly visible.

There are more than 300 ScotRail stations in Scotland – and every one is different. These guidelines don't provide detailed branding instructions for every station. Instead, they set out a series of basic principles that, when applied, will help create a consistent look throughout the network.

### Doors

Clearly marked entrances and exits are essential for customers, aiding day-to-day navigation and helping quick and safe evacuation in the event of emergencies. We recommend a clear distinction between doors that are used by **customers** and doors that are used only by **staff**.

**Customer doorways**  
Door – ScotRail blue  
Frames/architraves – Pure white

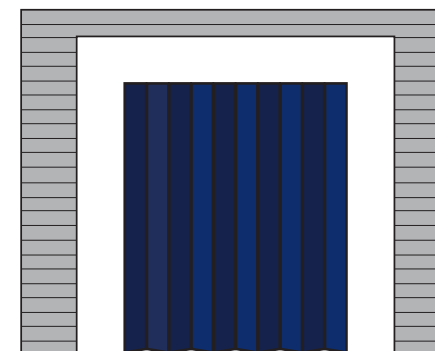


**Disused/industrial doorways/staff only**  
Door – Telegrey  
Frames/architraves – Pure white



### Lifts\*

Lift guard doors and sliding gates – ScotRail blue  
Frames – Pure white



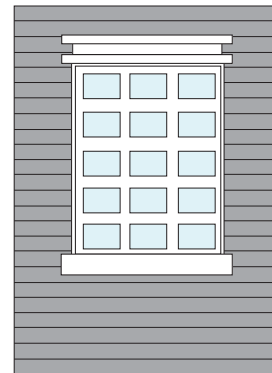
\*Retain factory finish for actual lift doors, unless they can be specified at manufacture – in which case, a silver/base metal finish is recommended.

## Windows

The predominantly white colour scheme for windows has been devised to be clean and simple, and to give a bright and airy impression. White is also readily available for modern, prefabricated window units for use in new/refurbished stations.

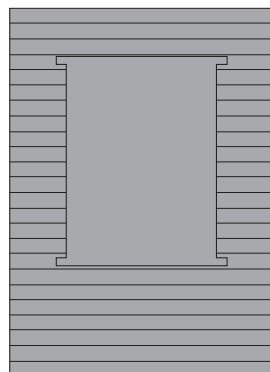
### Windows

Frames – Pure white  
Surrounds – Pure white  
Sills – Pure white



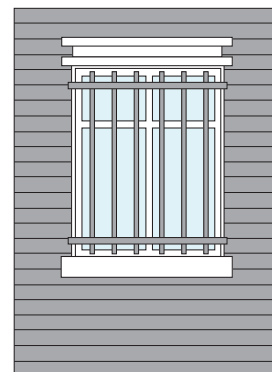
### Disused windows

Board – Telegrey  
Surrounds – Telegrey



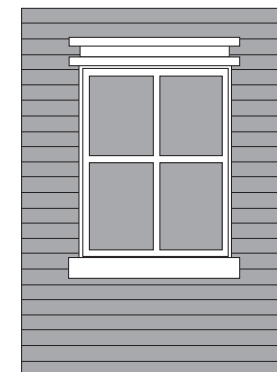
### Security windows

Bars – Telegrey



### Boarded glass windows

Board – Telegrey  
Frames – Pure white



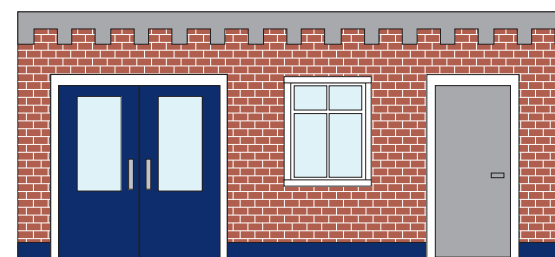
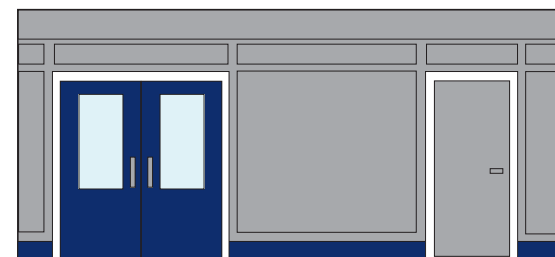
#### Exterior walls

Stations in Scotland have been constructed in a wide variety of materials, from brick and stone, to wood, glass and steel – and will continue to be so in the future. External surfaces are painted or left in their natural state. As a result, there is no single principle that can be applied to all stations.

These examples will help determine the most appropriate option:

- **Stone** – cleaned
- **Brick** – cleaned
- **Painted brick/stone** – Pigeon blue or Telegrey (where practical, the preferred option is to remove all existing paint from brick and stone, and retain the surface in its natural state)
- **Rendered stone/brick** – Pigeon blue or Telegrey (but do not paint unpainted render)
- **Wood** – Pigeon blue or Telegrey
- **Weatherboard** – Pigeon blue or Telegrey
- **Glass/steel/UPVC** – Pure white frames
- **Painted split wall (upper)** – Pigeon blue
- **Painted split wall (lower)** – Telegrey
- **Painted skirting** – ScotRail blue

The final colour scheme will be determined by the characteristics of the station. For example, a large featureless wall will appear less dominant if finished in Telegrey, rather than the darker Pigeon blue.





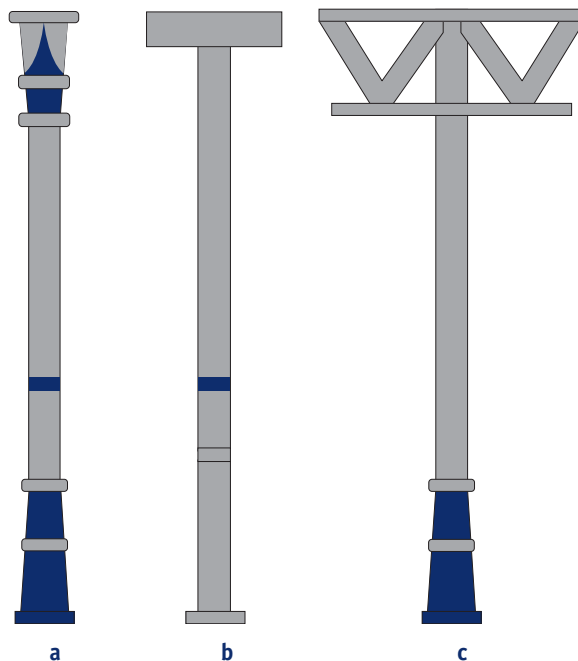
Where possible, columns and supports should be left unpainted. This minimises the need for regular maintenance and is particularly practical in modern or new stations, where the base metal and/or factory finish of columns is a good approximation for Telegrey (eg, galvanised steel).

In situations where the base metal must be painted, please follow the colour guidelines opposite.

When columns and supports obstruct main pedestrian routes (see examples **a** and **b**), they must have, as a minimum, a contrasting horizontal band 150mm wide placed at a height of approximately 1500mm to aid visibility.

### Columns

- Column shaft** – Telegrey or unpainted
- Column base** – ScotRail blue or Telegrey or unpainted
- Column detail (incl 150mm band)** – ScotRail blue
- Decorative Cap** – ScotRail blue
- Decorative detailing** – Telegrey
- Secondary detailing** – Pure white or Pigeon blue



### Brackets

- Bracket** – ScotRail blue
- Detailing** – Telegrey
- Secondary detailing** – Pure white or Pigeon blue



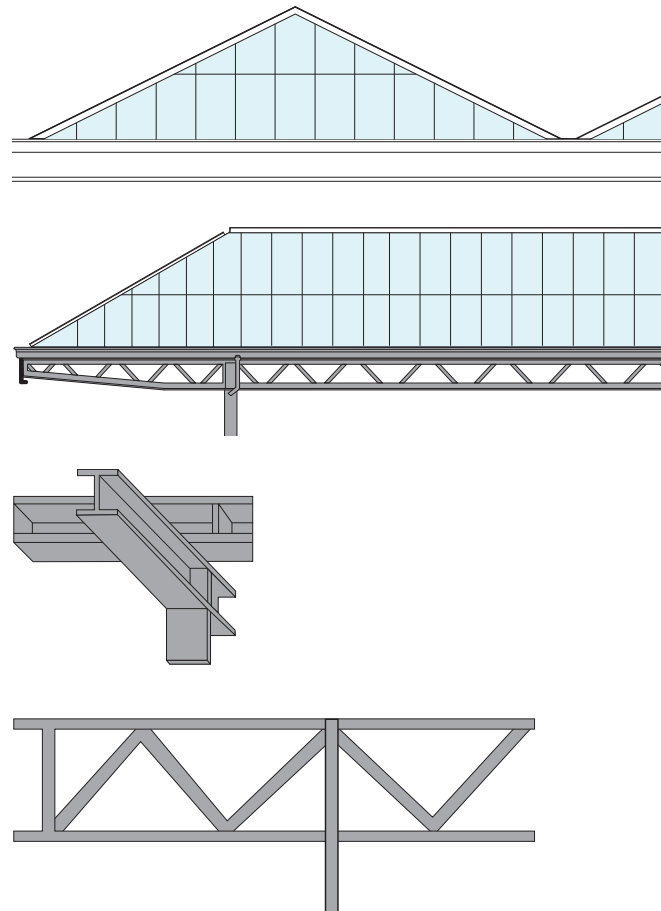
Buildings | Other items  
Togalaichean | Nithean eile

## Canopies

Steel or timber valances – Pure white or Telegrey

Trusses and framework – Telegrey

Underside of canopy – Telegrey



## Other

Downpipes – Telegrey

Downpipe on columns – match background

Downpipes on painted walls – match background

Rhones/gutters – Telegrey

Bargeboards, fascia and soffits – Pure white

Exposed steelwork, beams, etc – ScotRail blue, Telegrey or Pure white



When painting over factory finishes, please ensure correct preparation is carried out.

## Building interiors | Principles

### Taobh a-staigh thogalaichean | Prionnsapalan

Station interiors are designed to be light and airy, and to have a calming effect on customers. The use of a ScotRail blue coating is not advised for anything other than customer doors. However, a contrasting, dark floor covering is recommended so that the boundaries of the room are clearly visible. When large quantities of carpet are required, it may be practical to specially commission a design using the principles laid out in The Identity section.

- **Walls** – Papyrus white
- **Ceilings** – Pure white
- **Skirting** – Pure white
- **Picture rails and dado rails** – Pure white
- **Windows frames** – Pure white
- **Window surrounds and sills** – Pure white
- **Conduit pipes, etc** – match background
- **Security bars** – Telegrey
- **Customer doors (including toilet doors)** – ScotRail blue
- **Staff doors** – Telegrey
- **Disused/industrial doors** – Telegrey
- **Door surrounds** – Pure white



When painting over factory finishes, please ensure correct preparation is carried out.

These principles have been developed to keep initial painting and ongoing maintenance to a minimum. The base colour of Telegrey has been recommended because it matches the silver/grey factory finish (brushed steel, galvanised steel) of many common items of platform furniture. As a result, painting will not always be necessary. In fact, an unpainted finish is recommended. Colour is used only for detailing and to improve visibility.

## Lamp columns and signposts

Where possible, columns and posts should be left unpainted. This minimises the need for regular maintenance and is particularly practical in modern or new stations, where the base metal and/or factory finish of columns and posts is a good approximation for Telegrey (eg, galvanised steel).

In situations where the base metal must be painted, please follow the colour guidelines opposite.

When columns and posts are placed on main pedestrian routes, they must have, as a minimum, a contrasting horizontal band 150mm wide placed at a height of approximately 1500mm to aid visibility.

## Lamp columns and signposts

**Column base** – Unpainted or (on surfaces requiring paint) ScotRail blue or Telegrey

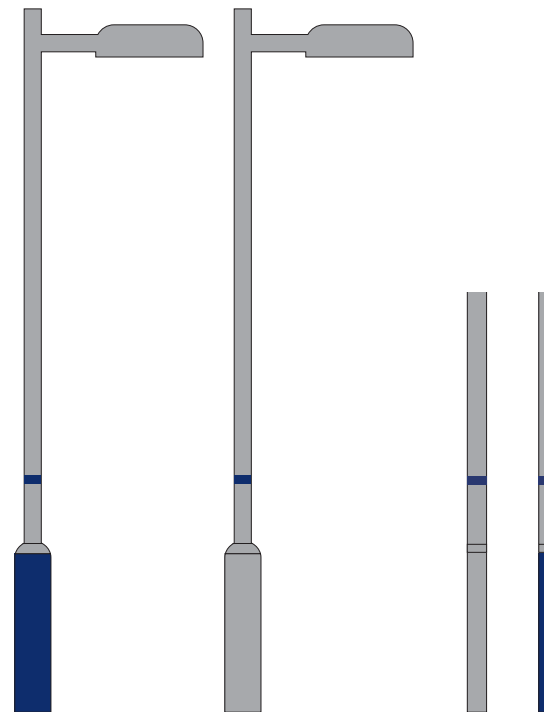
**Column detail (incl 150mm band)** – ScotRail blue

**Column shaft** – Unpainted or (on surfaces requiring paint) Telegrey

**Decorative Cap** – ScotRail blue

**Decorative detailing** – Telegrey

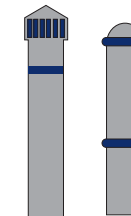
**Secondary detailing** – Pure white or Pigeon blue



## Bollards

**Bollard shaft** – Telegrey

**Bollard detailing** – ScotRail blue



When painting over factory finishes, please ensure correct preparation is carried out.

## Monitors

**Post shaft** – Unpainted or (on surfaces requiring paint) Telegrey

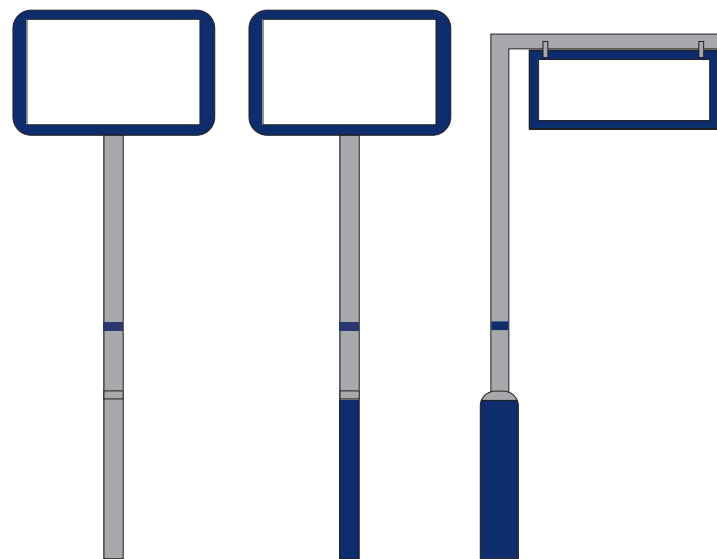
**Post base** – Unpainted or (on surfaces requiring paint) ScotRail blue or Telegrey

**Post detail (incl 150mm band)** – ScotRail blue

**Indicator/clock surround** – ScotRail blue (or leave unpainted)

**TV monitor surround** – ScotRail blue (or leave unpainted)

**Loudspeakers** – Telegrey (or match background colour)



## Platform seating

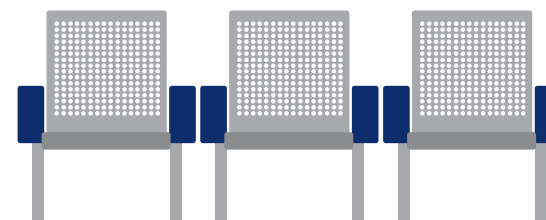
New seating should be supplied by the manufacturer with a bare stainless steel finish. Contrasting arm rests are required and, where possible, should be specified in ScotRail blue.

All other painted metal and wooden bench seating will be phased out over time. The exception is platform seating at some historic stations. Here, advice should be sought from the relevant local planning office.

## Seats

**Metal seats** – Unpainted stainless steel factory finish

**Contrasting arm rests** – ScotRail blue



Care must be taken to identify all equipment that is owned and operated by Network Rail (eg, Driver Only Operation equipment, including monitors and mirrors). All work to this equipment, including the application of the ScotRail brand, can only be undertaken by Network Rail or a Network Rail approved contractor.

When painting over factory finishes, please ensure correct preparation is carried out.

‘Infrastructure’ is the term we have used to cover all permanent features in the station environment that don’t form part of the ‘bricks and mortar’ fabric of the buildings – but are not contained within the section dealing with smaller items of platform furniture. Infrastructure includes such items as shelters, footbridges, railings and fencing.

Generally speaking, the principles that apply to the station buildings, and the furniture and fittings, will also apply to the surrounding infrastructure. A core palette of four colours (ScotRail blue, Telegrey, Pure White and Pigeon blue) is used in a way to aid accessibility and safety, and to minimise initial painting and ongoing maintenance.

## Railings and fences

It is not necessary to paint railings and fencing when the factory finish (eg, galvanised steel) does not require a further coating **and** when the supplied colour is a good match for the ScotRail colour palette. In most cases, this is likely to be silver-grey.

However, when the railings incorporate a handrail – or feature a horizontal bar that could be used as such – the handrail must be painted in a contrasting colour (eg, ScotRail blue) in a non-glossy finish.

**Sheffield bicycle hoop**  
Unpainted factory finish

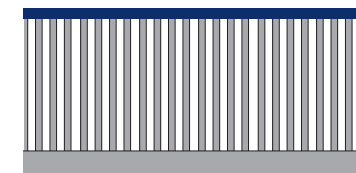


## Railings

**Uprights** – Telegrey or factory finish (silver/grey)

**Handrail** – ScotRail blue

**Detailing** – ScotRail blue



## Fencing

**Uprights** – Telegrey or factory finish (silver/grey)

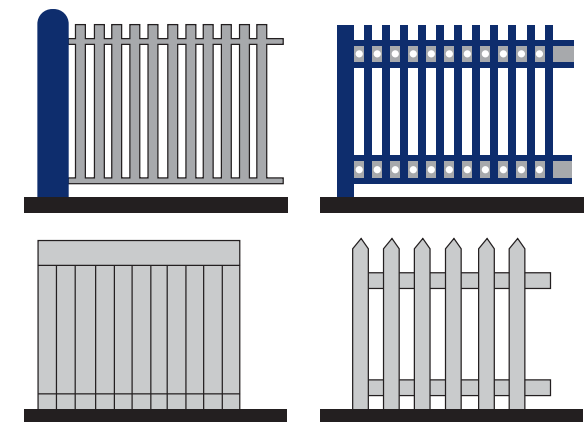
**Detailing** – ScotRail blue (including bar used as handrail)

**Fence supports** – Telegrey or ScotRail blue

**Gates** – Telegrey

**Gate posts** – Telegrey or ScotRail Blue

**Wooden fencing** – Telegrey



When painting over factory finishes, please ensure correct preparation is carried out.

Where possible, metal footbridges should be left unpainted – with the exception of a ScotRail blue 150mm ‘visibility’ band on columns which are on main pedestrian routes, and ScotRail blue handrails. Paint may also be applied as detailing (eg, column bases) to break up large areas of Telegrey or bare metal.

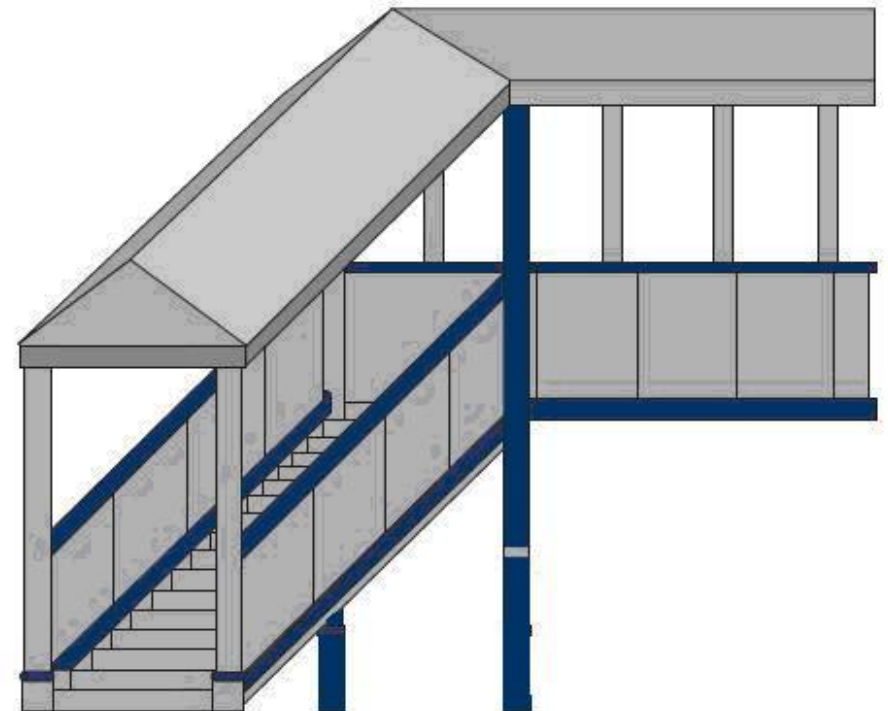
## Open footbridges

Columns & supports – ScotRail blue  
Column detail (including 150mm band) – Telegrey  
Secondary detailing (eg, historic) – Pure white and Pigeon blue  
Railing uprights – Telegrey  
Handrails – ScotRail blue  
Steps – Telegrey  
Skirting – ScotRail blue



## Enclosed footbridges

Columns & supports – ScotRail blue  
Column detail (including 150mm band) – Telegrey  
Secondary detailing – Pure white and Pigeon blue  
Railing uprights – Telegrey  
Handrails – ScotRail blue  
Skirting – ScotRail blue  
Steps – Telegrey  
Roof – Telegrey  
Window surrounds – Telegrey



Infrastructure | Principles | Shelters  
Bun-structar | Prionnsapalan | Ionadan-fasgaidh

### Shelters

Although modern shelters are often purchased as complete units directly from the manufacturer, there are still opportunities to specify the ScotRail colours. An unpainted steel finish is a good approximation for Telegrey – it should not be repainted – while the rubber seals around the glazed units are available in a number of colours (we recommend dark blue).

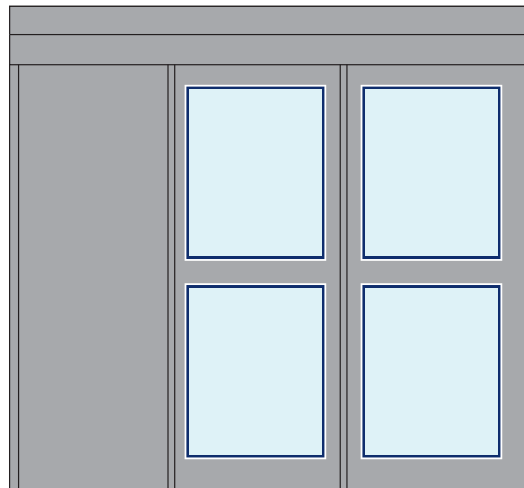
The branding of existing shelters should follow the same general principles as other permanent station buildings.

### Shelters

**Walls** – Pigeon blue or Telegrey  
**Upper wall** – Pigeon blue  
**Lower wall** – Telegrey  
**Skirting** – ScotRail blue  
**Window frames** – Pure white  
**Vallance** – Telegrey or Pure white  
**Bargeboards, fascia and soffits** – Pure white  
**Interior wall** – Papyrus white  
**Interior ceiling** – Pure white  
**Integral seating** – ScotRail blue

### Subways

**Walls** – Papyrus white  
**Ceiling** – Pure white  
**Skirting** – ScotRail blue



Modern shelter

When painting over factory finishes, please ensure correct preparation is carried out.





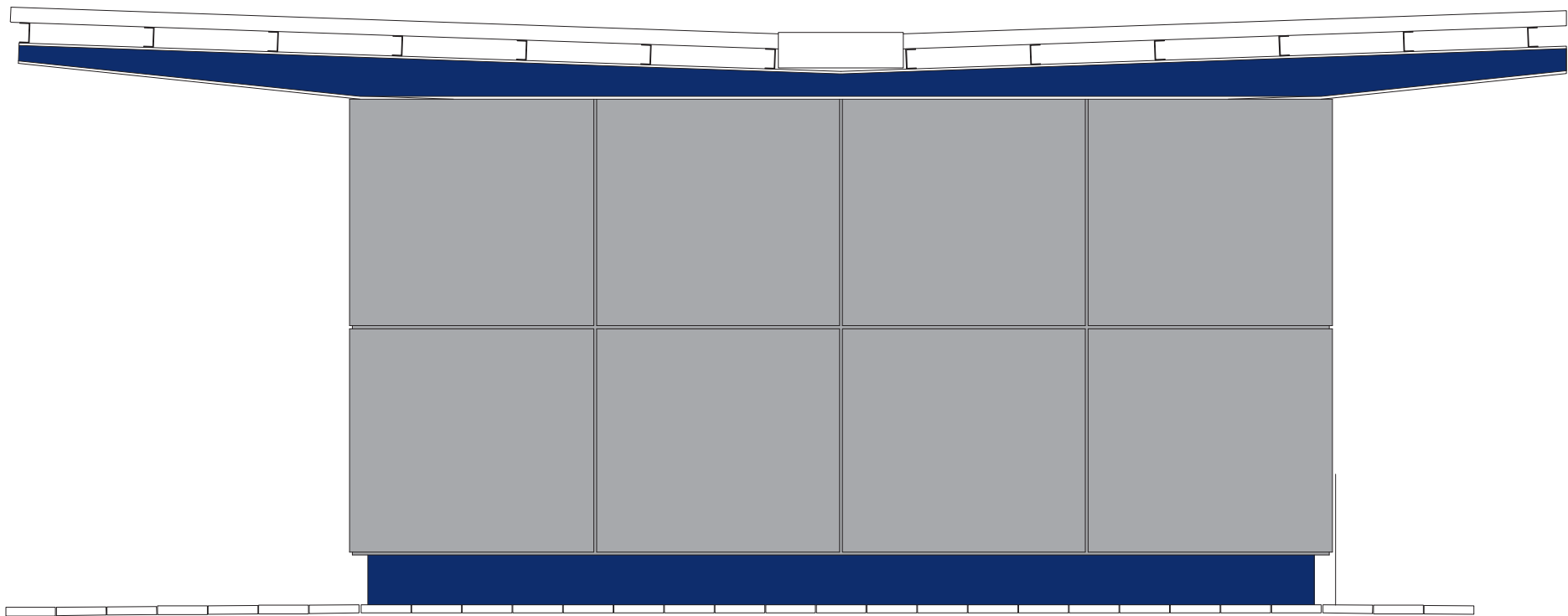
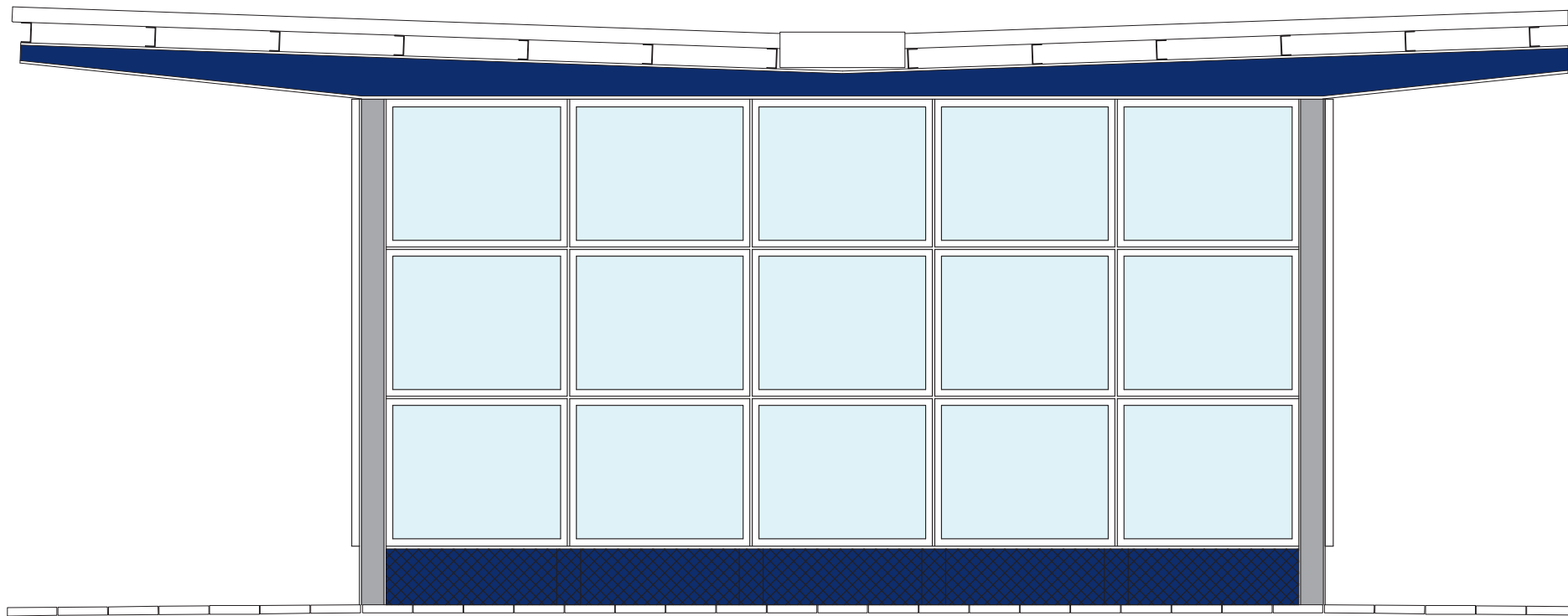


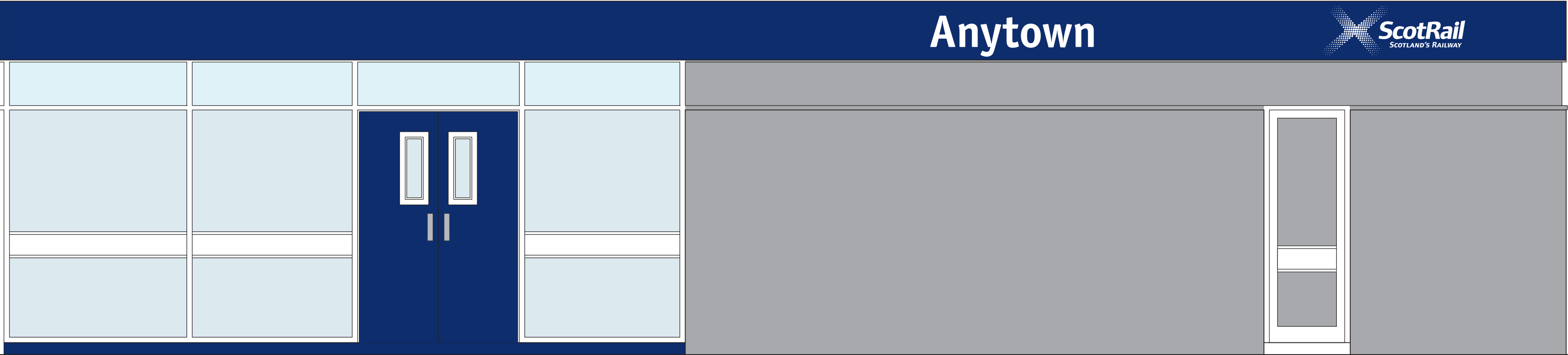
















Buildings | Examples | **Large suburban**  
Togalaichean | Eisimpleirean | **Fo-bhailteach mòr**

