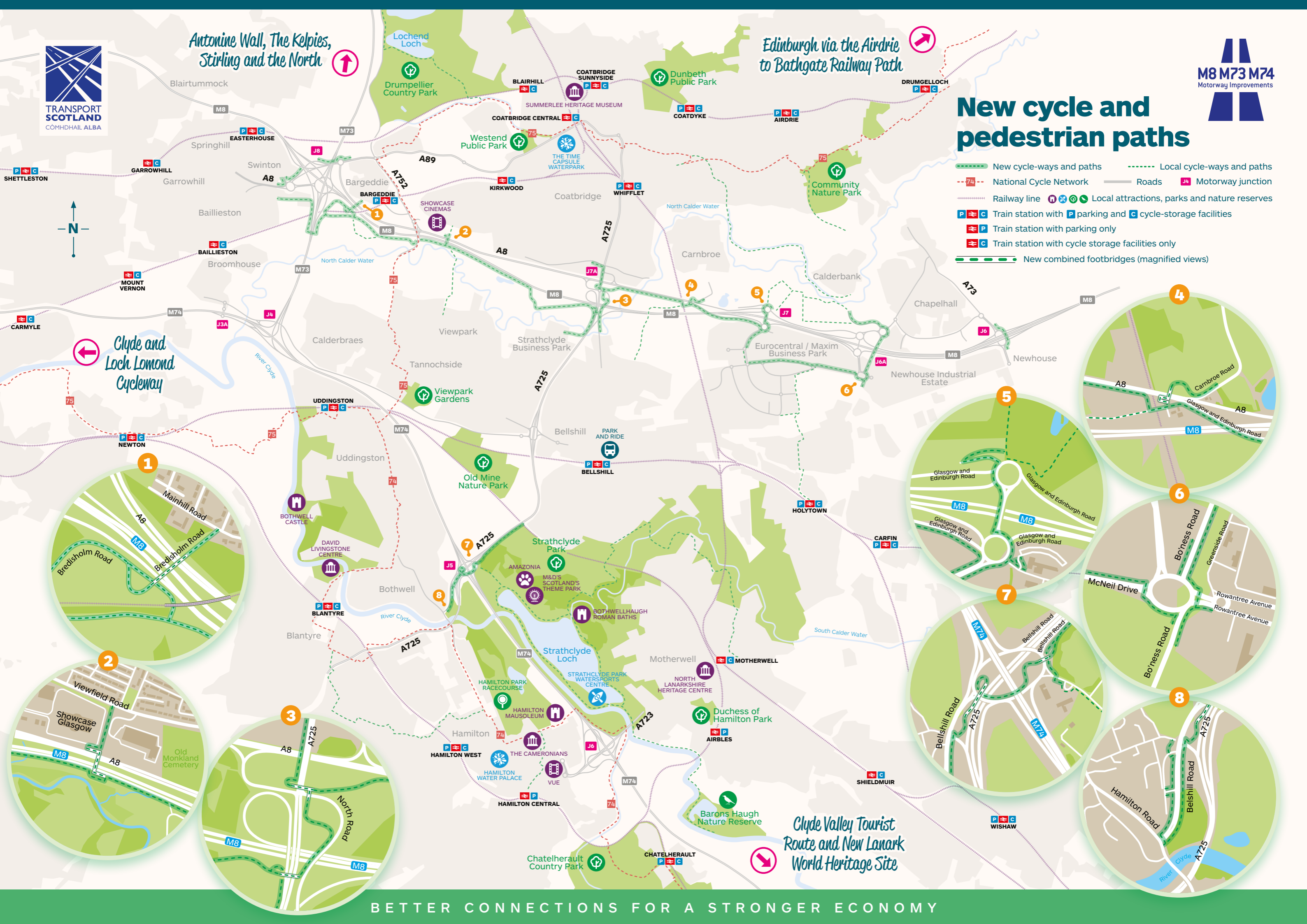


Antonine Wall, The Kelpies,
Stirling and the North

Edinburgh via the Airdrie
to Bathgate Railway Path

New cycle and pedestrian paths

- New cycle-ways and paths
- National Cycle Network
- Railway line
- Train station with parking and cycle-storage facilities
- Train station with parking only
- Train station with cycle storage facilities only
- New combined footbridges (magnified views)
- Local cycle-ways and paths
- Roads
- Motorway junction
- Local attractions, parks and nature reserves



Clyde and Loch Lomond
Cyclenway

Clyde Valley Tourist
Route and New Lanark
World Heritage Site