

Welcome to the June 2009 Newsletter for the Land Use and Transport Integration in Scotland (LATIS) service. These newsletters are published quarterly, providing an update on events and milestones taking place within LATIS.

This newsletter reviews the developments in the LATIS Service between February 2009 and May 2009.

Land Use and Transport Integration in Scotland (LATIS)

The LATIS service plays a vital role in facilitating decision-making across a range of policy areas, including transport, planning, the environment, demographics, health, education and the utilities.

The LATIS service consists of four key elements:

User Engagement; A continuous programme of consultations and events focused on a range of issues, including transport, plan-

ning and the development and application of both the LATIS Modelling Capability and LATIS Service;

Modelling; Use and support for the transport model (TMfS) and land-use model (TELMoS);

Planning; The collection and provision of planning data and support to the culture change within the planning industry, brought about by the Common Statement

on Planning Reform;

Data Collection; The collection of transport and travel data and other user-specified data through the use of the LATIS Data Collection facility.

More information about the LATIS service is available at the LATIS website: www.latis.org.uk

or contact us at: LATISsupport@mvaconsultancy.com.

Technical Enhancements

TMfS:07 and TELMoS:07 Model Development

The development of the TMfS:07/TELMoS:07 modelling suite is complete and available for use for appropriate applications. Should you wish to make use of the modelling service, a LATIS Request Form is available from the LATIS website:

www.latis.org.uk/about/applytouselatis.

This form should be completed and emailed to the LATIS team at:

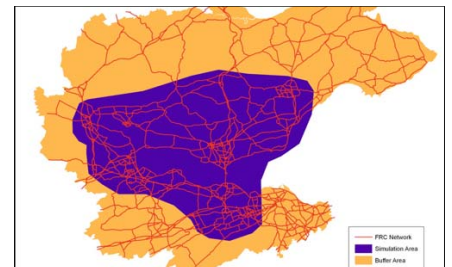
LATISsupport@mvaconsultancy.com.



Forth Regional Model

The TMfS:07 sub-model for the Forth area - the Forth Regional Model (FRM) - is also now complete and is available for use on appropriate projects through the submission of a LATIS Request Form.

This Regional Model is currently being used by various organisations to inform their studies in and around the modelled area (illustrated in purple in the diagram to the right).



Audit

The audits of TMfS:07, TELMoS:07 and FRM models are currently being undertaken by the Traffic and Transport Advisors and Auditors (TTAA), and are expected to be completed before summer 2009.

User Engagement

21st April User Group Meeting

The 6th User Group Meeting (the 1st Technical User Group Meeting) was held on 21 April 2009, in the Roxburghe Hotel in Edinburgh. We would like to extend our thanks to all the delegates who attended from Transport Scotland, Scottish Government, Regional Transport Partnerships, Local Authorities, consultants and other interested parties. The event proved to be one of the best attended User Group meetings to date.

The day introduced a new format for the LATIS User Group Days with the provision of technical workshops designed to encourage interaction and discussions be-

tween delegates and the LATIS Team. Two workshops were established catering for different levels of technical knowledge.

Workshop A provided a technical overview of the development and application of the modelling capability. Topics covered included, the types of data collected and used in TMfS and TELMoS, the main stages and processes of the models, the main assumptions used in forecasting changes over time and examples of model outputs.

Workshop B was more technical with topics covered in greater depth than Workshop A, including

describing the model stages from land-use inputs to transport outputs, land-use modelling calculations and technical assumptions, technical development of the Transport and Demand models and their application.

Overall feedback from the Exit Questionnaires indicated a very positive response from delegates with many enjoying the introduction of the new format, in particular the ability for extended interaction with presenters on a whole range of topics. This format will be used again when appropriate.

Presentations from the day are available on the LATIS website.

Annual Report

The 2008 Annual Report is available on the LATIS website. (www.latis.org.uk/publications/reports). The report assesses how LATIS performed against its

twin aims of delivering **customer engagement** and **technical excellence**. It also reflects on how LATIS has contributed towards delivering the overarching Pur-

pose of the Scottish Government. Thoughts are now turning towards the 2009 Annual Report.

Website

The LATIS website has been enhanced with more specific descriptions and data about the LATIS key components — the modelling suite TMfS:07/TELMoS:07 model, the Data Collection and the Planning data. This information is accessible via

three portals located throughout the LATIS website. Each portal contains maps and a library section, which houses reports specific to each component. These include model development reports, audit reports and technical user manuals.

The website has also been updated with relevant information relating to the latest version of the modelling suite TMfS:07/TELMoS:07. The data is housed at the modelling portal of the LATIS website.

Planning Reform Support

The LATIS service (in particular, the Land Use and Transport Interaction modelling capability), is being used to prepare 'baseline data' to assist planning authorities in the development of local and regional development plans. These data have been used to identify changes in development planning in the North East of

Scotland. The models are being used to provide an evidence base to indicate a range of key performance indicators including; future changes in car ownership levels and subsequent changes to travel growth, potential future impacts to the trunk road network and general levels of transport accessibility.



LATIS Applications

EGIP

LATIS is being used to inform the business case for the Edinburgh to Glasgow Rail Improvement Programme (EGIP). This study is applying the transport model to forecast future passenger volumes, assess changes in journey times and examine the overall economic benefits of the proposals.

A73 STAG 2

LATIS is being used to inform a study examining the traffic issues within the A73 corridor. This

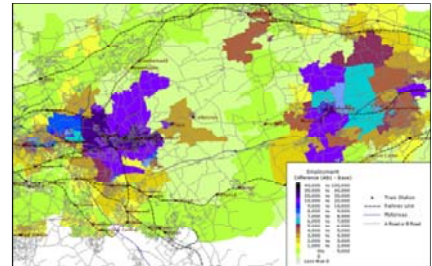
includes the provision of traffic patterns and road journey times in and around Airdrie.

Clackmannanshire-Fife-Edinburgh STAG Study

LATIS is being used to assist in a study along the Clackmannanshire-Fife-Edinburgh corridor. The modelling capability was used to identify existing and future accessibility problems and help identify, develop and test potential measures to alleviate issues that were highlighted in the study.

Development Planning

LATIS is being used to assist development led planning projects within the central belt. This includes the analysis of trip rates, travel demand and associated traffic impacts.



LATIS Wider Use

To further the awareness of LATIS, extended customer engagement, as well as close liaison with Stakeholders and the Key Agencies, is ongoing. Examples of such liaisons include:



- continued consultations with the LATIS User Group and Key Agencies to discuss the means by which LATIS can support policy in their area;
- ongoing support for the modernisation of the planning agenda;
- working with Local Authorities and Structure Plan Teams to coordinate the sharing of planning data;
- ensuring the LATIS modelling capability maintains synergies with other modelling practices that are within or of concern to Scotland (for example: SITM & SITLUM (SPT), NTM (DFT));
- ongoing support for the Forth Replacement Crossing team;
- ongoing collection of data for the Scottish Ferries Review and Concessionary Travel Scheme; and
- initial discussions relating to the wider development of sub-area models.

A full review of these liaisons are provided in the LATIS Annual Reports.

Use of the Service

We would like to remind all prospective users that a LATIS Request Form is required to be submitted for consideration before the service, model and/or data can be released for use. It is also a condition of this process that users fill in a User Satisfaction Form upon completion of their application. We would like to re-emphasise this point as we are seeking as much feedback as possible to help us deliver continuous technical improvement and your satisfaction. Both LATIS Request Form and User Satisfaction Form are available at the LATIS website.

If you have any other queries, please do not hesitate to contact the LATIS Support Team at: LATISsupport@mvaconsultancy.com