

Welcome to the January 2011 Newsletter for the Land Use and Transport Integration in Scotland (LATIS) service. These newsletters are published on a quarterly basis, providing an update on LATIS service developments, model applications, and milestones.

This newsletter reviews the milestones and developments in the LATIS Service between November 2010 and January 2011.

Technical Developments

Scottish Trip End Predictions (STEP)

The Scottish Trip End Prediction (STEP) program is currently being developed by the LATIS team. Similar to the Department for Transport's TEMPRO database, STEP will provide the Scottish transport and planning communities with a consistent set of planning data and travel trip end forecasts which reflect both anticipated development and committed transport schemes across Scotland.

Trip ends by a range of travel purposes, modes, and a number of geographical areas

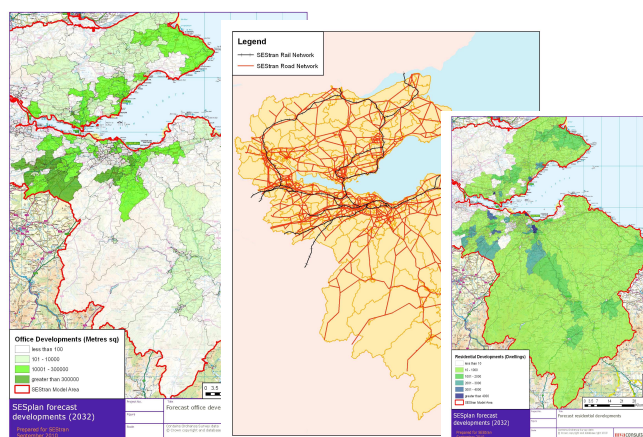
will be available. It can also be used to generate growth factors using consistent levels of segmentation.

The program also facilitates the potential to include a range of forecast scenarios to be compared under varying assumptions relating economic growth, population forecasts and other pre-defined scenarios.

The STEP program will soon be available via the LATIS website for use by both transport and land-use planners in February 2011.

SEStran Regional Model

Previous newsletters have tracked the development of the SEStran Regional Model, a sub-area model of south-east Scotland developed from the TMfS:07 National Model for SEStran. We are pleased to announce that the development of this model is now complete, with the audit process nearing completion. LATIS users will be able to apply to use the model via the SEStran website. This website will also contain model reports including the Model Development Report and Audit Report.



Assembly of Planning Policy Inputs (APPI)

Transport Scotland, working together with Scottish Water, has completed its biennial Assembly of Policy Planning Input (APPI) process. Planning Policy Input data includes details of committed and proposed types and levels of development across all Scottish authorities. These data form inputs to TELMoS:07 and the TMfS:07 Demand Model and allow the assessment of the impacts of future developments upon the transport network.

We recently provided Information Notes to each planning authority summarising the data they have provided and how it has been processed.

User Engagement

Annual Report

The Annual Report is a key document in demonstrating how LATIS meets the needs of Transport Scotland and delivers value for money.

The 2010 Annual Report has further improved our approach to valuing LATIS with a focus on economics and effectiveness. This report is available on the [LATIS website](#).

Conference

Transport Scotland is once again taking an active role in the 2011 conference season, hosting, sponsoring, and presenting at high profile conferences.

The 2011 Scottish Transport Applications and Research (STAR) Conference will once again be held at the Glasgow Royal Concert Hall on Thursday 12 May 2011. Transport Scotland and MVA Consultancy are presenting papers which are informed by LATIS.

LATIS Applications

Analysis of the Impacts of Severe Weather

The severe winter weather experienced by Scotland on the 6th and 7th of December 2010 led to widespread disruption of the transport system. Roads were blocked, train and bus services were cancelled or delayed and the effects were felt for a number of days.

Recognising the impacts of this disruption, Transport Scotland is considering the use of the LATIS service to assist in quantifying the impact of these events across the country in terms of direct transport effects, in particular, the social and commercial costs of disruption.



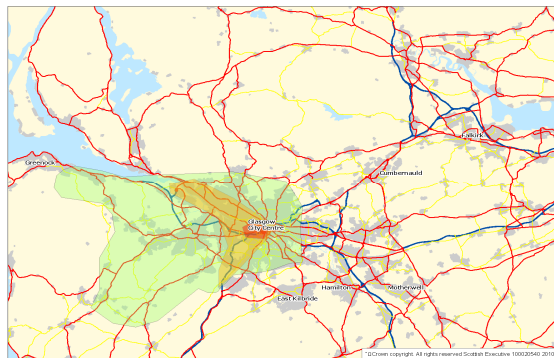
Trunk Road Maintenance

Maintenance of the trunk road network is essential to ensure that Scotland continues to be served by a safe, efficient, and reliable transport network. However, roadworks can have short-term impacts on journey times, both in terms of the actual length of the journey and the reliability of the journey time.

Transport Scotland is making use of the LATIS service to forecast potential issues associated with and to reduce the impact of road maintenance. A range of quantitative assessments of the impacts of the roadworks has been undertaken, including:

- An indication of the 'sphere of influence' of the roadworks on a given trunk road;
- A summary of the origins and destinations of journeys on a particular route;
- The number and type of vehicles and types of motorists using a particular section of a route, broken down by time of day;
- An analysis of the potential impact of work on diversionary routes;
- An overview of seasonality on routes;
- The length of journey and additional in-car time as a result of the roadworks; and
- Analysis of the public transport capacity that can support travel movements.

To date, the LATIS service has been used to assess the potential impact of roadworks on various sections of the M8, the A75 and A76.



Use of the Service

We would like to remind all of the prospective users that a LATIS User Request Form is required to be submitted for consideration before the service, model and / or data can be released for use. It is also a condition of this process that model users fill in a LATIS User Satisfaction Form upon completion of their application.

Your feedback is important to us, allowing us to better meet your needs in future and to maintain our levels of technical excellence. Both the LATIS User Request Form and LATIS User Satisfaction Form are available on the LATIS website, www.latis.org.uk.

If you have any other queries, please do not hesitate to contact the LATIS Support Team at: LATIS@transportscotland.gsi.gov.uk.