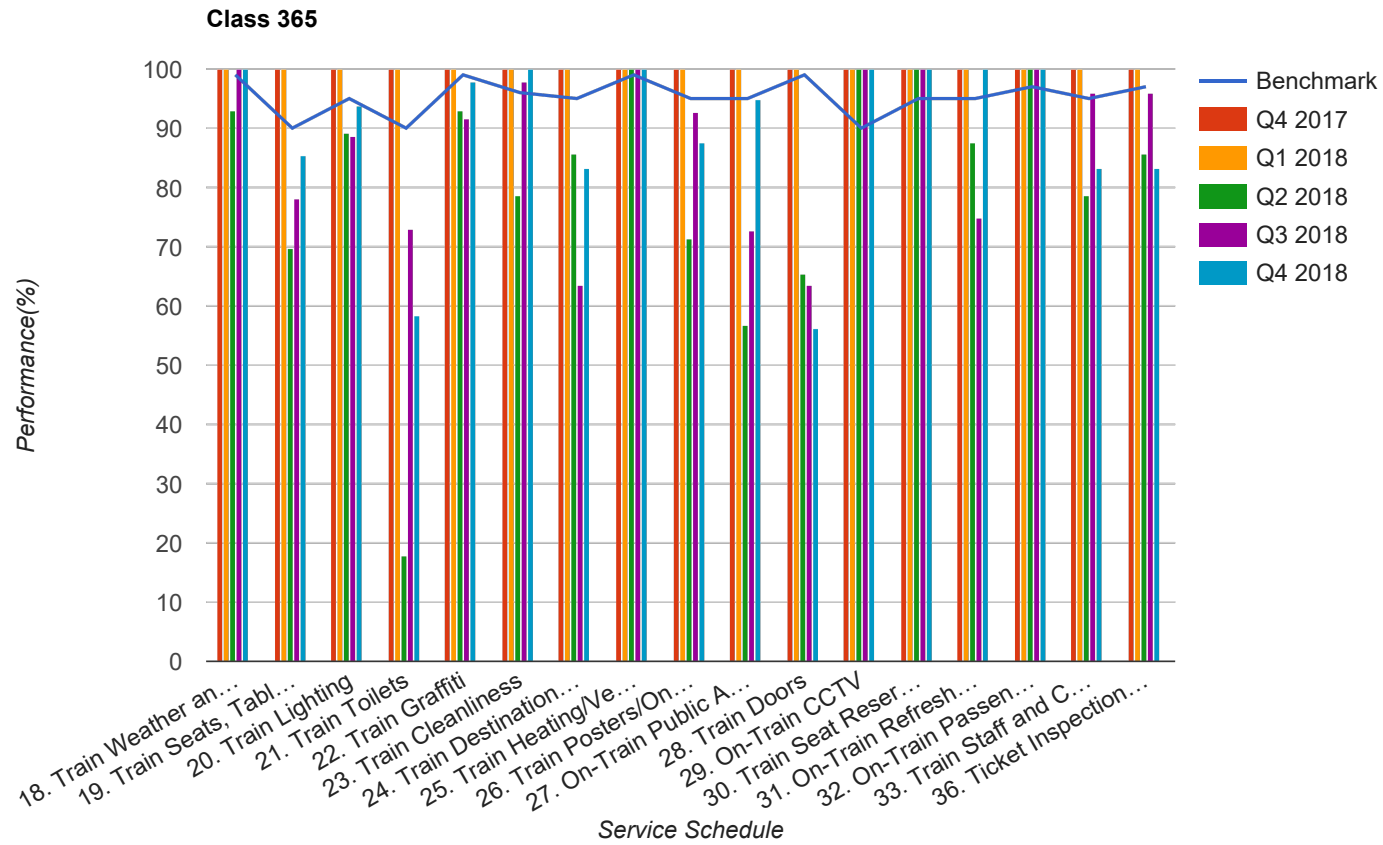


Quarter 4 2017 - Quarter 4 2018  
Scotrail



## Table

Service Schedule	Benchmark	Q4 2017	Q1 2018	Q2 2018	Q3 2018	Q4 2018
18. Train Weather and Wind Proofing	99	100	100	92.86	100	100
19. Train Seats, Tables, Racks and other Passenger Facilities	90	100	100	69.64	78.13	85.42
20. Train Lighting	95	100	100	89.29	88.54	93.75
21. Train Toilets	90	100	100	17.86	72.92	58.33
22. Train Graffiti	99	100	100	92.86	91.67	97.92
23. Train Cleanliness	96	100	100	78.57	97.92	100
24. Train Destination Boards and Passenger	95	100	100	85.71	63.54	83.33
25. Train Heating/Ventilation	99	100	100	100	100	100
26. Train Posters/On Train Information	95	100	100	71.43	92.71	87.5
27. On-Train Public Address	95	100	100	56.82	72.58	95
28. Train Doors	99	100	100	65.45	63.54	56.25
29. On-Train CCTV	90	100	100	100	100	100
30. Train Seat Reservation System	95	100	100	100	100	100
31. On-Train Refreshment and Food Facilities	95	100	100	87.5	75	100
32. On-Train Passenger Entertainment Systems and WiFi	97	100	100	100	100	100
33. Train Staff and Customer Care	95	100	100	78.57	95.83	83.33
36. Ticket Inspection on Trains	97	100	100	85.71	95.83	83.33