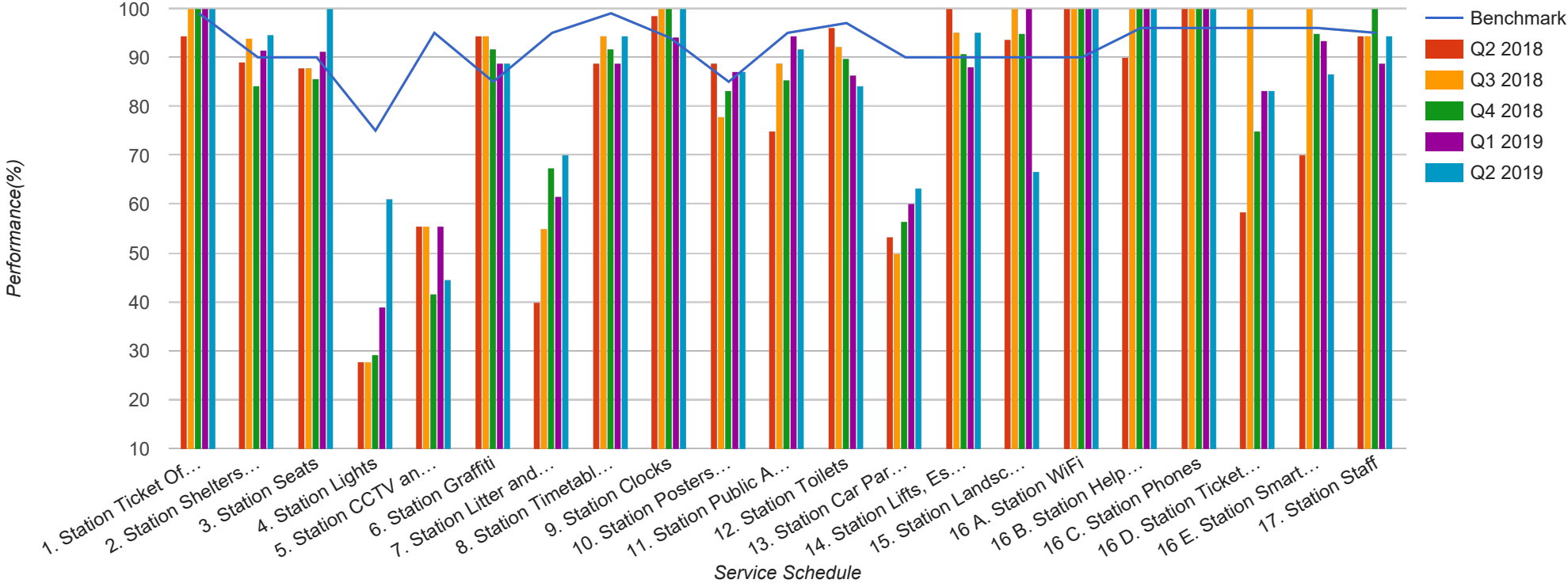


Quarter 2 2018 - Quarter 2 2019  
Scotrail

**X - Edinburgh via Falkirk High**



## Table

Service Schedule	Benchmark	Q2 2018	Q3 2018	Q4 2018	Q1 2019	Q2 2019
1. Station Ticket Offices	99	94.44	100	100	100	100
2. Station Shelters and Waiting Areas	90	89.15	93.8	84.21	91.47	94.57
3. Station Seats	90	87.72	87.72	85.53	91.23	100
4. Station Lights	75	27.78	27.78	29.17	38.89	61.11
5. Station CCTV and Security	95	55.56	55.56	41.67	55.56	44.44
6. Station Graffiti	85	94.44	94.44	91.67	88.89	88.89
7. Station Litter and Contamination	95	40	55	67.5	61.67	70
8. Station Timetables and Information	99	88.89	94.44	91.67	88.89	94.44
9. Station Clocks	94	98.55	100	100	94.2	100
10. Station Posters and Signage	85	88.89	77.78	83.33	87.04	87.04
11. Station Public Announcement and Customer Information Systems	95	75	88.89	85.42	94.44	91.67
12. Station Toilets	97	96.08	92.16	89.71	86.27	84.31
13. Station Car Parks and Cycle Facilities	90	53.33	50	56.41	60	63.33
14. Station Lifts, Escalators, Access Ramps and Stairs	90	100	95.24	90.74	88.1	95.24
15. Station Landscaping and Vegetation	90	93.75	100	95	100	66.67
16 A. Station WiFi	90	100	100	100	100	100
16 B. Station Help Points	96	90	100	100	100	100
16 C. Station Phones	96	100	100	100	100	100
16 D. Station Ticket Machines	96	58.33	100	75	83.33	83.33
16 E. Station Smartcard Readers	96	70	100	95	93.33	86.67
17. Station Staff	95	94.44	94.44	100	88.89	94.44