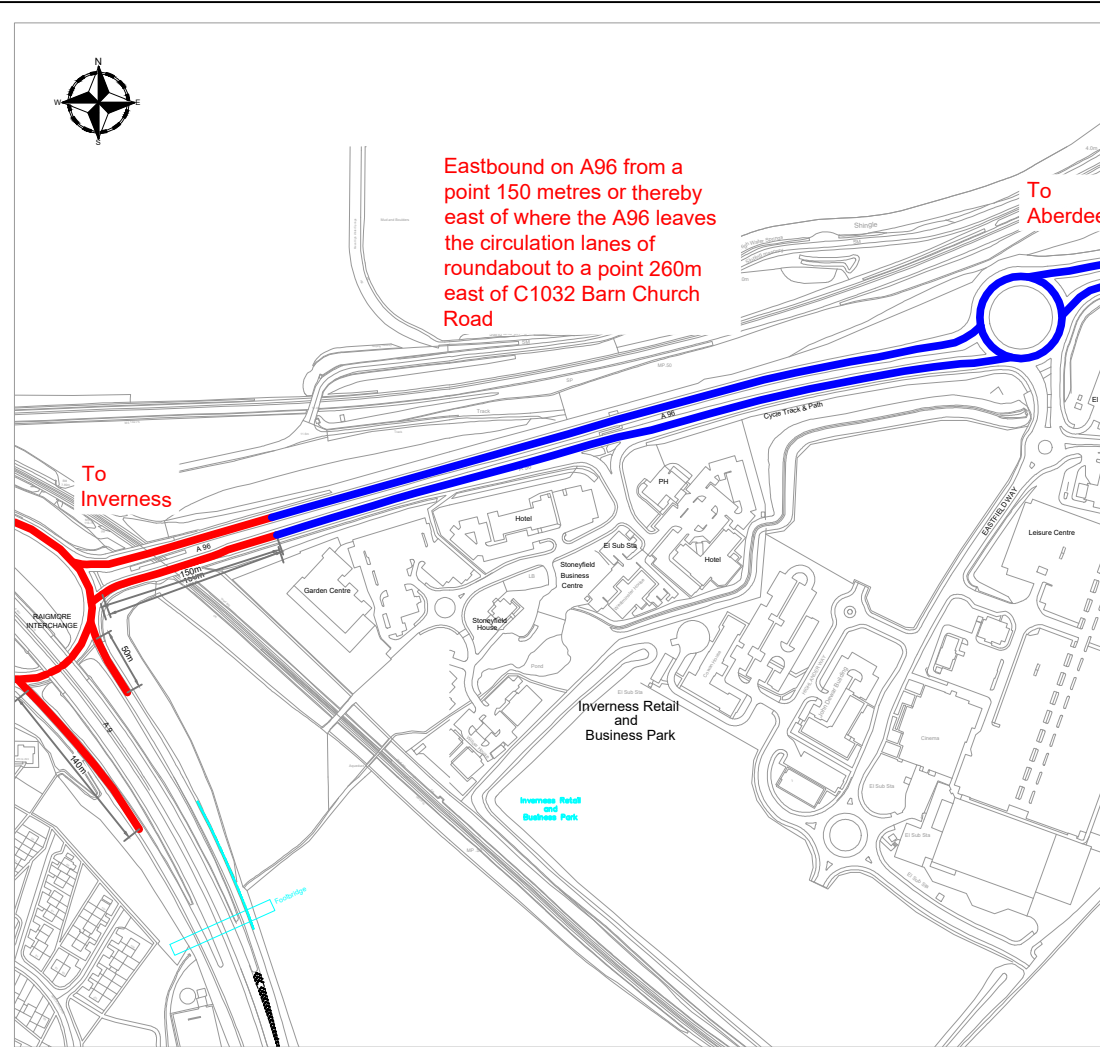
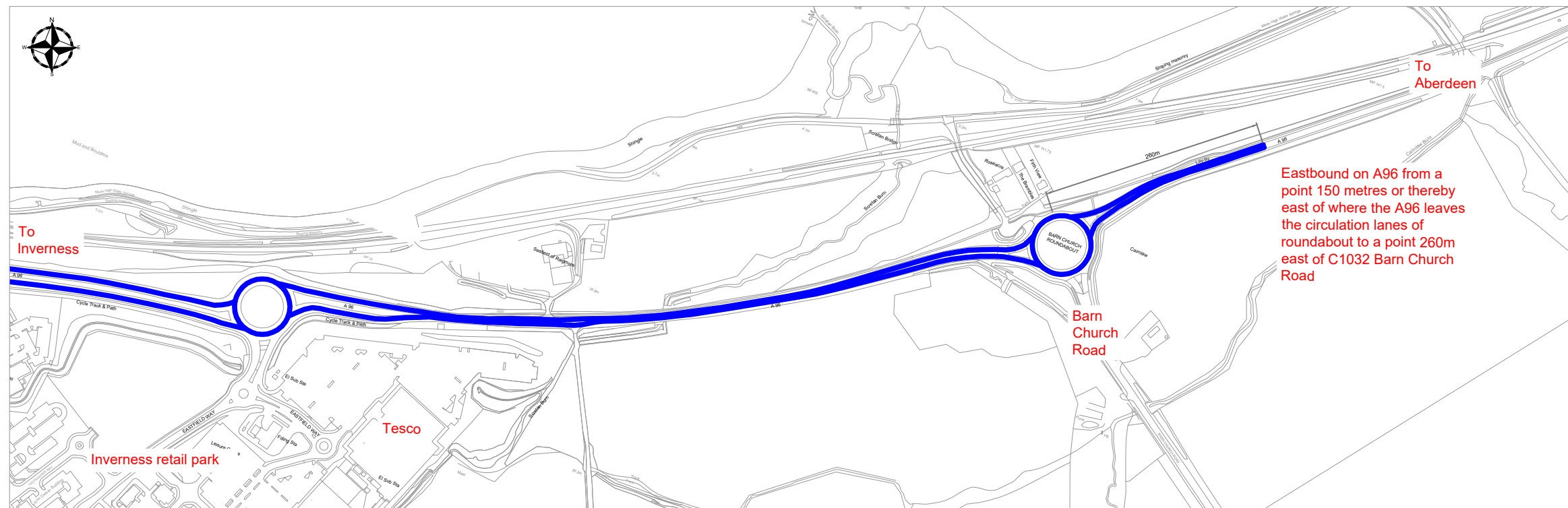




LOCATION PLAN - Scale NTS




WESTERN EXTENT OF 50MPH SPEED LIMIT
Scale 1:6000 @ A3




EASTERN EXTENT OF 50MPH SPEED LIMIT
Scale 1:6000 @ A3

Drawing Number

A9 and A96 Raigmore Interchange/SLO/50/001

PART 1  Length of road covered by 30mph

1. That length of the M9/A9 Edinburgh - Stirling - Thurso Trunk Road on the southbound off slip road leading to the Raigmore Interchange roundabout, Inverness, from a point 130 metres or thereby north-west of the point where it meets the circulation lanes of the roundabout going south-eastwards on the slip road to the point where it meets the circulation lanes of the roundabout, a distance of 130 metres or thereby.
2. That length of the M9/A9 Edinburgh - Stirling - Thurso Trunk Road on the southbound on slip road leading from the Raigmore Interchange roundabout, Inverness, from the point where it leaves the circulation lanes of the roundabout going south-eastwards on the slip road for a distance of 50 metres or thereby.
3. That length of the M9/A9 Edinburgh - Stirling - Thurso Trunk Road on the northbound off slip road leading to the Raigmore Interchange roundabout, Inverness, from a point 140 metres or thereby south-east of the point where it meets the circulation lanes of the roundabout, a distance of 140 metres or thereby.
4. That length of the M9/A9 Edinburgh - Stirling - Thurso Trunk Road on the northbound on slip road leading from the Raigmore Interchange roundabout, Inverness, from the point where it leaves the circulation lanes of the roundabout going north-westwards on the slip road for a distance of 50 metres or thereby.
5. That length of the M9/A9 Edinburgh - Stirling - Thurso Trunk Road being the circulation lanes of the Raigmore Interchange roundabout, Inverness, in a clockwise direction, a distance of 510 metres or thereby.
6. That length of the A96 Craibstone - Inverness Trunk Road from the point where it meets the circulation lanes of the Raigmore Interchange roundabout, Inverness, going eastwards for a distance of 150 metres or thereby.

PART 2  Length of road covered by 50mph

7. That length of the A96 Craibstone - Inverness Trunk Road from a point 150 metres or thereby east of the Raigmore Interchange roundabout circulation lanes, to a point 260 metres or thereby east of the centreline of its junction with the C1032 Barn Church Road, a distance of 1.88 kilometres or thereby

Do not scale this drawing

Rev	Date	Checked

Status
Consultation

Rev.

Client



TRANSPORT SCOTLAND
CÒMHDHAIL ALBA

Project	M9/A9 Edinburgh - Stirling - Thurso Trunk Road
Title	The A9 and A96 Trunk Roads (Raigmore Interchange) (30mph and 50mph Speed Limits) Order 202 [] Part 2 (50mph speed limit)

Drawing No.	A9 and A96 Raigmore Interchange/SLO/50/001	Date	June 2021
Scale	As Shown	Designed	SU
Drawn	TC	Checked	Approved