

STEP Version 1.0a Installation Instructions

Project Title:	Scottish Trip End Program (STEP)
Subject:	STEP V1.0a Installation Instructions
Date:	20 June 2011

1 Introduction

- 1.1 This information note is designed to guide the user through the installation of the Scottish Trip End Program (STEP). It is assumed that a copy of the STEP_Release_V1.0.zip has been obtained by the user, either via website or alternative transfer method.
- 1.2 As well as this, STEP requires the Microsoft Excel and Access applications to be installed on the PC. STEP has been tested with both Microsoft Office versions 10 and 12 and should be compatible with previous versions but will not necessarily be forward compatible.
- 1.3 Finally, it should also be noted that prior to installation the latest version of the Microsoft .NET framework, must be downloaded and installed. This can be downloaded from <http://www.microsoft.com/net/download.aspx>.

2 Installation

- 2.1 Unzip the STEP_Release_V1.0.zip file to the location in your directory where you would like it (this can be the program files directory but can be in any desired location). Once unzipped, a small directory structure will be created which will be populated by all relevant files.
- 2.2 It should be noted that the sub-folder names **cannot** be renamed as STEP will try to access them and fail if it cannot find them. For the same reason the STEP .exe file must remain in the root of this directory.
- 2.3 The other requirement for STEP is at least one input dataset. These can be obtained from the download area on the STEP portal of the LATIS website in a range of years and scenarios.
- 2.4 Once a database has been downloaded, it should be unzipped from the zipfile. Note that the database is password protected and so cannot be opened; this is normal and does not mean there has been an error in downloading.
- 2.5 For simplicity the database should be placed in the "Planning Data" directory immediately below the STEP.exe, this is the first place that STEP will look for planning data files when browsing but it alternatively can be placed anywhere on the PC and then the STEP program can be used to browse for it.

STEP Version 1.0a Installation Instructions

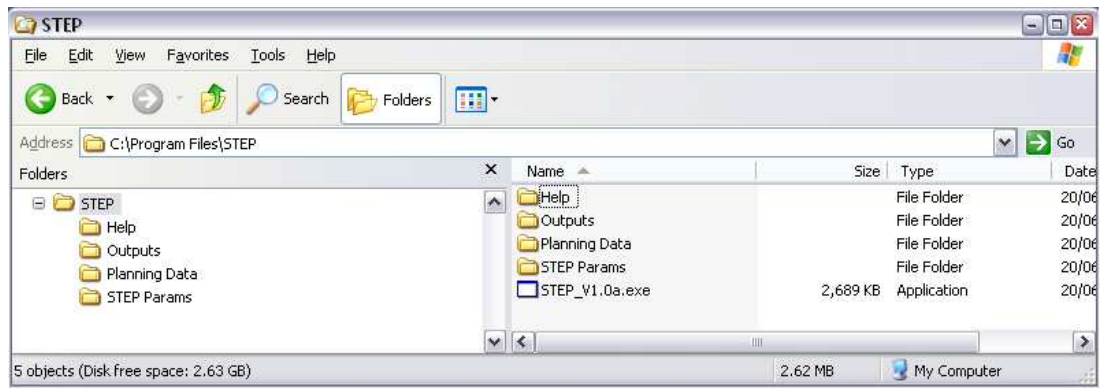


Figure 1 STEP directory structure

- 2.6 Similarly outputs from STEP can be written to whatever location the user wants, **however** the output folder must exist in the STEP directory structure.

3 Creating a desktop shortcut

- 3.1 On the desktop of the PC on which STEP is being run, right click and select new -> shortcut. Now browse for the STEP.exe. Then click next, and type in a name for this shortcut. Finally, click finish.

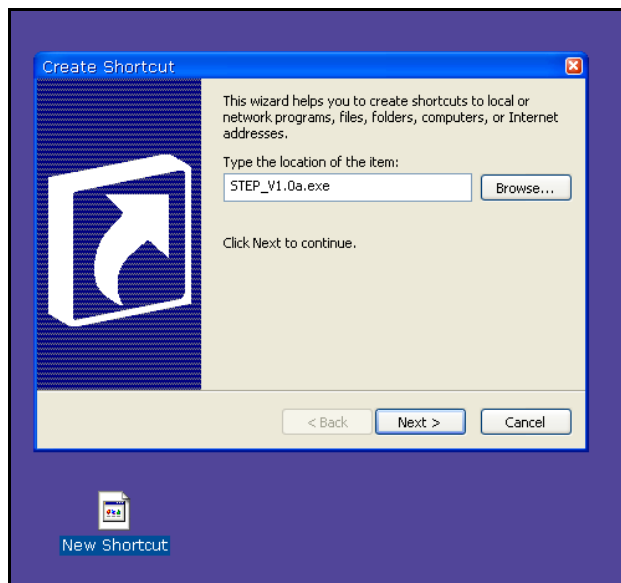


Figure 2 Create a STEP shortcut

4 Running STEP

- 4.1 For details on running the application, please consult the help section within the program.