

SCOTTISH MINISTERS' REQUIREMENTS**SCHEDULE 3 PART 2****EXTENT OF THE UNIT**

CONTENTS	Page No.
1. THE UNIT	1
1.1 Location	1
1.2 Extent	1
1.3 Interfaces with Adjacent Trunk Road Units	1
1.4 Interfaces with Other Roads	1
1.5 Motorways and Special Roads	2
 ANNEX 3.2/A – Location of the Unit	 3
 ANNEX 3.2/B – Trunk Roads in Network 1 and Network 2	 7
 ANNEX 3.2/C – Trunk Roads within Network 1 which will be realigned for Network 2	 11
 ANNEX 3.2/D – Trunk Roads within Network 2 realigned from Network 1	 15
 ANNEX 3.2/E – Trunk Roads which will be included in Network 2	 19
 ANNEX 3.2/F – Other Trunk Road items which will be included in Network 1	 23
 ANNEX 3.2/G – Other Trunk Road items which will be included in Network 2	 29
 ANNEX 3.2/H – Items within the Trunk Road boundary which are excluded from Network 1	 38
 ANNEX 3.2/I – Items within the Trunk Road boundary which are excluded from Network 2	 42
 ANNEX 3.2/J – Drawings	 46

SCOTTISH MINISTERS' REQUIREMENTS

SCHEDULE 3 PART 2

EXTENT OF THE UNIT

1. THE UNIT

1.1 Location

1.1.1 The location of the Unit is shown in Annex 3.2/A.

1.2 Extent

1.2.1 The extent of Network 1 is:

- (i) Trunk Roads as stated in Annex 3.2/B and Annex 3.2/C of this Part, extending to the Trunk Road boundary, excluding items stipulated in Annex 3.2/H of this Part, and
- (ii) Other Trunk Road items stipulated in Annex 3.2/F of this Part.

1.2.2 The extent of Network 2 is:

- (i) Trunk Roads as stated in Annex 3.2/B, Annex 3.2/D and Annex 3.2/E of this Part, extending to the Trunk Road boundary, excluding items stipulated in Annex 3.2/I of this Part, and
- (ii) Other Trunk Road items stipulated in Annex 3.2/G of this Part.

1.3 Interfaces with Adjacent Trunk Road Units

1.3.1 The interfaces at the Unit boundary with adjacent Trunk Road units, and with some roads of other roads authorities, are as shown on the drawings in Annex 3.2/J of this Part.

1.4 Interfaces with Other Roads

1.4.1 The interfaces at the Unit boundary with local authority and other roads are not always identifiable. The document *Extent of the Trunk Road Network* published by Transport Scotland, identifies protocols for determining the boundaries between the Trunk Roads in the Unit and local authority roads for the purposes of this Contract.

1.4.2 The Operating Company shall comply with these protocols to determine the extent of any of its responsibilities and those of Works Contractors for all Operations, Schemes and Works at such interfaces, if it is not stipulated elsewhere.

1.4.3 The Operating Company shall liaise with local authorities, other relevant public bodies and other organisations responsible for Trunk Roads and other roads adjoining the Unit. The Operating Company shall thereby manage any local arrangements for maintenance and any documented cross-boundary arrangements in a coordinated manner that secures the safety of road users at all times, irrespective of contractual responsibilities.

1.4.4 The Operating Company shall identify and record any instances of such arrangements not conforming to the protocols set out in *Extent of the Trunk Road Network*. The Operating Company shall inform the Director in writing within 14 days of identification of such instances.

1.5 Motorways and Special Roads

1.5.1 The following Trunk Roads within the Unit are Motorways:

- (i) **M90/A90 Edinburgh – Fraserburgh** Trunk Road, and
- (ii) **A823(M) Pitreavie Spur** Trunk Road.

1.5.2 In addition to the motorways, there are no roads designated as Special Roads in Network 1.

1.5.3 In addition to the motorways, roads designated as Special Roads in Network 2 are shown in Table 1.5.2.A.

1.5.4 The Scottish Ministers may designate other roads to be Special Roads.

Table 1.5.2.A – Special Roads in Network 2

Route	Start	End	Comment
A90	Dalmeny	Scotstoun Jn	
A90	Scotstoun Jn	Queensferry Jn	
A90 NB off slip to Queensferry R/bout	A90 NB Diverge	Queensferry R/bout	
A90 SB on slip from Queensferry R/bout	Queensferry R/bout	A90 SB Merge	

Notes:

NB – North Bound

SB – South Bound

JN – Junction

R/bout – Roundabout.

This is Annex 3.2/A to Schedule 3 Part 2 referred to in the foregoing Agreement between Scottish Ministers and Amey LG Limited.

SCOTTISH MINISTERS' REQUIREMENTS

SCHEDULE 3 PART 2

EXTENT OF THE UNIT

ANNEX 3.2/A – Location of the Unit

SCOTTISH MINISTERS' REQUIREMENTS

SCHEDULE 3 PART 2

EXTENT OF THE UNIT

ANNEX 3.2/A – Location of the Unit

1. LOCATION OF UNIT

1.1 Drawing

The location of the Unit and the included Trunk Roads are shown on Drawing No S3P2 001, which is included in Annex 3.2/J.

This is Annex 3.2/B to Schedule 3 Part 2 referred to in the foregoing Agreement between Scottish Ministers and Amey LG Limited.

SCOTTISH MINISTERS' REQUIREMENTS

SCHEDULE 3 PART 2

EXTENT OF THE UNIT

ANNEX 3.2/B – Trunk Roads in Network 1 and Network 2

SCOTTISH MINISTERS' REQUIREMENTS

SCHEDULE 3 PART 2

EXTENT OF THE UNIT

ANNEX 3.2/B – Trunk Roads in Network 1 and Network 2

1. ROADS

1.1 Trunk Roads in the Unit

1.1.1 The following Trunk Roads are in Network 1 and Network 2:

- (i) **M90/A90 Edinburgh – Fraserburgh Trunk Road** from the M9 Junction 1A at Humble as shown on Drawing No S3P2 002 leading generally north-eastwards for a distance of 3.9 kilometres or thereby to the Scotstoun Junction of the A90 as shown on Drawing No S3P2 003,
- (ii) **M90/A90 Edinburgh – Fraserburgh Trunk Road** from A90 Dalmeny leading generally westwards for a distance of 1 kilometre or thereby to A90 Scotstoun Junction as shown on Drawing No S3P2 003,
- (iii) **M90/A90 Edinburgh – Fraserburgh Trunk Road** from A90 Echline Junction as shown on Drawing No S3P2 004 leading generally northwards for a distance of 4.2 kilometres or thereby to A90 Ferrytoll Junction as shown on Drawing No S3P2 005, including the Forth Road Bridge. To become A9000 at Commencement of Service Date 2,
- (iv) **M90/A90 Edinburgh – Fraserburgh Trunk Road** from A90 Ferrytoll Junction as shown on Drawing No S3P2 005 leading generally northwards for a distance of 7.6 kilometres or thereby to M90 Junction 3 Halbeath as shown on Drawing No S3P2 006, and
- (v) **A823(M) Pitreavie Spur Trunk Road** from its junction with the M90 at Masterton (M90 Junction 2) leading generally westwards for a distance of 1.5 kilometres or thereby to its junction with the A823 but excluding Pitreavie Roundabout Dunfermline as shown on Drawing No S3P2 007.

All drawings referred to in this paragraph are contained in Annex 3.2/J of this Part.

This is Annex 3.2/C to Schedule 3 Part 2 referred to in the foregoing Agreement between Scottish Ministers and Amey LG Limited.

SCOTTISH MINISTERS' REQUIREMENTS

SCHEDULE 3 PART 2

EXTENT OF THE UNIT

ANNEX 3.2/C – Trunk Roads within Network 1 which will be realigned for Network 2

SCOTTISH MINISTERS' REQUIREMENTS

SCHEDULE 3 PART 2

EXTENT OF THE UNIT

ANNEX 3.2/C – Trunk Roads within Network 1 which will be realigned for Network 2

1. TRUNK ROADS

1.1 Trunk Roads within Network 1 which will be realigned.

1.1.1 The following Trunk Roads are in Network 1:

- (i) M90/A90 Edinburgh – Fraserburgh Trunk Road** from A90 Scotstoun Junction as shown on Drawing No S3P2 003 leading generally north westwards for a distance of 1.5 kilometres or thereby to A90 Echline Junction as shown on Drawing No S3P2 004, and
- (ii) M90/A90 Edinburgh – Fraserburgh Trunk Road** Ferrytoll Junction as shown on Drawing No S3P2 005.

1.1.2 All drawings referred to in this annex are contained in Annex 3.2/J of this Part.

This is Annex 3.2/D to Schedule 3 Part 2 referred to in the foregoing Agreement between Scottish Ministers and Amey LG Limited.

SCOTTISH MINISTERS' REQUIREMENTS

SCHEDULE 3 PART 2

EXTENT OF THE UNIT

ANNEX 3.2/D –Trunk Roads within Network 2 realigned from Network 1

SCOTTISH MINISTERS' REQUIREMENTS

SCHEDULE 3 PART 2

EXTENT OF THE UNIT

ANNEX 3.2/D –Trunk Roads within Network 2 realigned from Network 1

1. TRUNK ROADS

1.1 Realigned Trunk Roads within Network 2

1.1.1 The following realigned Trunk Roads will be within Network 2:

- (i) **M90/A90 Edinburgh – Fraserburgh Trunk Road** from A90 Scotstoun Junction as shown on Drawing No S3P2 008 leading generally north westwards for a distance of 1.5 kilometres or thereby to A90 Echline Junction as shown on Drawing No S3P2 009, and
- (ii) **M90/A90 Edinburgh – Fraserburgh Trunk Road** M90 Junction 1B Ferrytoll as shown on Drawing No S3P2 010.

1.1.2 All drawings referred to in this annex are contained in Annex 3.2/J of this Part.

This is Annex 3.2/E to Schedule 3 Part 2 referred to in the foregoing Agreement between Scottish Ministers and Amey LG Limited.

SCOTTISH MINISTERS' REQUIREMENTS

SCHEDULE 3 PART 2

EXTENT OF THE UNIT

ANNEX 3.2/E – Trunk Roads which will be included in Network 2

SCOTTISH MINISTERS' REQUIREMENTS

SCHEDULE 3 PART 2

EXTENT OF THE UNIT

ANNEX 3.2/E – Trunk Roads which will be included in Network 2

1. TRUNK ROADS

1.1 Trunk Roads which will be included in Network 2

1.1.1 The following Trunk Roads will be in Network 2:

- (i) the proposed **M90/A90 Edinburgh – Fraserburgh Trunk Road** from M90 Junction 1 Scotstoun as shown on Drawing No S3P2 008 leading generally north westwards for a distance of 2.6 kilometres or thereby to M90 Junction 1A Queensferry as shown on Drawing No S3P2 011, and
- (ii) the proposed **M90/A90 Edinburgh – Fraserburgh Trunk Road** from M90 Junction 1A Queensferry leading generally northwards for a distance of 4.4 kilometres or thereby to M90 Junction 1B Ferrytoll as shown on Drawing No S3P2 010, including the Queensferry Crossing.

1.1.2 All drawings referred to in this annex are contained in Annex 3.2/J of this Part.

This is Annex 3.2/F to Schedule 3 Part 2 referred to in the foregoing Agreement between Scottish Ministers and Amey LG Limited.

SCOTTISH MINISTERS' REQUIREMENTS

SCHEDULE 3 PART 2

EXTENT OF THE UNIT

ANNEX 3.2/F – Other Trunk Road items which will be included in Network 1

SCOTTISH MINISTERS' REQUIREMENTS

SCHEDULE 3 PART 2

EXTENT OF THE UNIT

ANNEX 3.2/F – Other Trunk Road items which will be included in Network 1

1. Included Items

1.1 Other Trunk Road items which will be included in Network 1

1.1.1 The following items are included in Network 1:

- (i) items shown on Drawing No S3P2 004 including:
 - (a) Ferrymuir Gait from the B800 leading generally northwards for a distance of 0.3 kilometres or thereby to the public car park,
 - (b) the public car park at Ferrymuir Gait,
 - (c) the access road from the public car park entrance to the Traffic Scotland National Control Centre car park,
 - (d) the Traffic Scotland National Control Centre car park,
 - (e) the Forth Road Bridge car park,
 - (f) the Forth Road Bridge access road from the Forth Road Bridge depot to the Forth Road Bridge storage area, and
 - (g) the grassed area to the north of the Traffic Scotland National Control Centre building.
- (ii) items shown on Drawing No S3P2 013 including:
 - (a) the Forth Road Bridge public viewing area,
 - (b) the public toilet,
 - (c) the Hopetoun Site Office, and
 - (d) the Forth Road Bridge boathouse,
- (iii) areas of land used for:
 - (a) Landscape Areas as referred to in the routine maintenance and management function of the Integrated Roads Information System,
 - (b) snow fences, and
 - (c) other such features,

in accordance with the provisions of this Contract.
- (iv) parcels of land identified in Table 3.2.F.1.

Table 3.2.F.1 – Parcels of land included in Network 1

Identifier	Name	Drawing No
32	Land under the Forth Road Bridge between dismantled railway and the Firth of Forth	S3P2 013
31	Hopetoun Crossroads North	S3P2 013
30	Hopetoun Crossroads South	S3P2 013
28	Forth Road Bridge car park	S3P2 013
29	North of the Traffic Scotland National Control Centre building	S3P2 013
27	Traffic Scotland National Control Centre car park	S3P2 013
25	Access road from the public car park entrance to the Traffic Scotland National Control Centre	S3P2 013
26	Public car park at Ferrymuir Gait	S3P2 013
24	Forth Road Bridge storage area	S3P2 013
23	Ferrymuir Gait	S3P2 013
22	Land at Echline Triangle	S3P2 013
21	Land by Kirkliston Road East	S3P2 013
51	Land between the Firth of Forth and B981	S3P2 013
72	Station Garage at the junction of B981, Chapel Street and Chapel Place, Inverkeithing	S3P2 021
1	Kirkliston Shelter Belt 1	S3P2 014
2	Kirkliston Shelter Belt 2	S3P2 014
3	Kirkliston Shelter Belt 3	S3P2 014
4	Culvert outfall	S3P2 014

- (v) variable message sign Structures that are part of the Traffic Scotland Equipment, listed in Table 3.2.F.2 "Structures outwith the Trunk Road boundary".
- (vi) advance direction signs with integrated variable message signs, listed in Table 3.2.F.3 "Advance Direction Signs outwith the Trunk Road boundary but included in Network 1".

1.1.2 All drawings referred to in this annex are contained in Annex 3.2/J of this Part.

Table 3.2.F.2 – Structures outwith the Trunk Road boundary

Structure Purpose	Type (Gantry, Cantilever, Centrally mounted)	Structure Reference Number	Other Reference Number	Route	Easting	Northing	Location Description
VMS	Cantilever	A90 0 G1	K2	A90	315341	677109	A90 N East of Dalmeny
VMS	Post mounted	M90 1-1 G19	J1	A921	312461	683528	A921W ¼ mile E of M90 J1 Admiralty
VMS	Cantilever	M90 1-1 G11	J5	A921	313540	683519	A921W ¾ mile E of M90 J1
VMS	Post mounted	A90 0 G10	K1	A90	318735	674926	A90N, Barnton
VMS	Post mounted	A90 0 G11	TBC	A90	319561	674982	A90, Clermiston

Table 3.2.F.3 – Advance Direction Signs outwith the Trunk Road boundary but included in Network 1

Location	FRC Sign Ref	FRC Sign Face Drawing
B980	012-004 (39)	FRC-FITS-JG-DWG-1200-039,R07
Castle Drive	012-003 (40)	FRC-FITS-JG-DWG-1200-040,R08
A823	012-002 (41)	FRC-FITS-JG-DWG-1200-041,

This is Annex 3.2/G to Schedule 3 Part 2 referred to in the foregoing Agreement between Scottish Ministers and Amey LG Limited.

SCOTTISH MINISTERS' REQUIREMENTS

SCHEDULE 3 PART 2

EXTENT OF THE UNIT

ANNEX 3.2/G – Other Trunk Road items which will be included in Network 2

SCOTTISH MINISTERS' REQUIREMENTS**SCHEDULE 3 PART 2****EXTENT OF THE UNIT****ANNEX 3.2/G – Other Trunk Road items which will be included in Network 2****1. Included Items****1.1 Items which will be included in Network 2**

1.1.1 The following items will be included in Network 2:

- (i) items identified in Annex 3.2/F to this Part,
- (ii) items shown on Drawing No S3P2 019 including:
 - (a) Public footway / cycleway from A90 PTC, formerly the A90, to the B981,
 - (b) Service road to the North Abutment of the Queensferry Crossing and Admiral's House, and
 - (c) Public access track linking to the foreshore.
- (iii) areas of land used for:
 - (a) Landscaped Areas as referred to in the routine maintenance and management function of the Integrated Roads Information System, and
 - (b) snow fences,
 in accordance with the provisions of this Contract.
- (iv) traffic signals, associated equipment, ducts and chambers at:
 - (a) Queensferry Junction including on the roundabout and approach roads, and
 - (b) Ferrytoll Junction including intersections on Ferry Toll Road to the west of Ferrytoll Roundabout.
- (v) parcels of land identified in Table 3.2.G.1.

Table 3.2.G.1 – Parcels of Land included in Network 2

Identifier	Name	Drawing no.
5		S3P2-015
6		S3P2-015
7		S3P2-015
8		S3P2-015
9		S3P2-016

Identifier	Name	Drawing no.
10		S3P2-016
11		S3P2-016
12		S3P2-016
13		S3P2-016
14		S3P2-016
15		S3P2-016
16		S3P2-015
17		S3P2-015
18		S3P2-015
19		S3P2-015
20		S3P2-015
33		S3P2-016
34		S3P2-016
35		S3P2-016
36		S3P2-016
37		S3P2-016
38		S3P2-016
39		S3P2-016
40		S3P2-016
41		S3P2-016
42		S3P2-016
43		S3P2-016
44		S3P2-016
45		S3P2-017
46		S3P2-017
47		S3P2-017
48		S3P2-017
49		S3P2-017
50		S3P2-017
52		S3P2-019
53		S3P2-019
54		S3P2-019
55		S3P2-019
56		S3P2-019
57		S3P2-020
58		S3P2-020
59		S3P2-020
60		S3P2-020
61		S3P2-020
62		S3P2-020
63		S3P2-020
64		S3P2-020
65		S3P2-020
66		S3P2-020
67		S3P2-020
68		S3P2-021
69		S3P2-020
70		S3P2-021
71		S3P2-021

- (vi) all boundary fences on the A90 at Scotstoun Junction and around or within parcels of land identified in paragraph 1.1.1(v) of this Annex, and
- (vii) variable message sign Structures that are part of the Traffic Scotland Equipment, listed in Table 3.2.G.2 "Structures outwith the Trunk Road boundary".
- (viii) advance direction signs with integrated variable message signs, listed in Table 3.2.G.3 "Advance Direction Signs outwith the Trunk Road boundary but included in Network 2".

1.1.2 All drawings referred to in this annex are contained in Annex 3.2/J of this Part.

Table 3.2.G.2 – Structures outwith the Trunk Road boundary

Structure Purpose	Type (<i>Gantry, Cantilever, Centrally mounted</i>)	TRBDB Reference Number	Other Reference Number	Route	Easting	Northing	Location Description
	None						

Table 3.2.G.3 – Advance Direction Signs outwith the Trunk Road boundary but included in Network 2

Location	FRC Sign Ref	FRC Sign Face Drawing
KMD towards Ferrytoll Junction	107.28(.18)	FRC-P-SRM-003-D-NT-SIG-12107-C1
Hope Street towards Ferrytoll Junction	108.11	FRC-P-SRM-003-D-NT-SIG-12108-C1
A904 East at Echline Junction	120.13	FRC-P-SRM-008-D-NT-SIG-12120-C2
A904 West Echline Junction	121.03	FRC-P-SRM-008-D-NT-SIG-12121-C1
A904 East at Queensferry Junction	121.09	FRC-P-SRM-008-D-NT-SIG-12121-C1
A904 West at Queensferry Junction	121.10	FRC-P-SRM-008-D-NT-SIG-12121-C1

This is Annex 3.2/H to Schedule 3 Part 2 referred to in the foregoing Agreement between Scottish Ministers and Amey LG Limited.

SCOTTISH MINISTERS' REQUIREMENTS

SCHEDULE 3 PART 2

EXTENT OF THE UNIT

ANNEX 3.2/H – Items within the Trunk Road boundary which are excluded from Network 1

SCOTTISH MINISTERS' REQUIREMENTS

SCHEDULE 3 PART 2

EXTENT OF THE UNIT

ANNEX 3.2/H – Items within the Trunk Road boundary which are excluded from Network 1

1. Excluded Items

1.1 Items within the Trunk Road boundary which are excluded from Network 1

1.1.1 The following items within the Trunk Road boundary are excluded from Network 1:

- (i) the following items shown on Drawing No S3P2 013 are excluded:
 - (a) the Ferrymuir Gait service station,
 - (b) the Ferrymuir Gait service station signs,
 - (c) the Traffic Scotland National Control Centre and adjacent paving, and
 - (d) the substation at the Traffic Scotland National Control Centre.
- (ii) the electronic components of variable message signs that are the responsibility of the Traffic Scotland Operations and Infrastructure Services Contractor. For the avoidance of doubt, the electronic components of variable message signs which were formerly the responsibility of FETA will be the responsibility of the Operating Company under this Contract during Service Delivery Period 1. All variable message sign Structures are the responsibility of the Operating Company.

1.1.2 All drawings referred to in this annex are contained in Annex 3.2/J of this Part.

This is Annex 3.2/I to Schedule 3 Part 2 referred to in the foregoing Agreement between Scottish Ministers and Amey LG Limited.

SCOTTISH MINISTERS' REQUIREMENTS

SCHEDULE 3 PART 2

EXTENT OF THE UNIT

ANNEX 3.2/I – Items within the Trunk Road boundary which are excluded from Network 2

SCOTTISH MINISTERS' REQUIREMENTS

SCHEDULE 3 PART 2

EXTENT OF THE UNIT

ANNEX 3.2/I – Items within the Trunk Road boundary which are excluded from Network 2

1. Excluded Items

1.1 Items within the Trunk Road boundary which are excluded from Network 2

- 1.1.1 The following items within the Trunk Road boundary will be excluded from Network 2:
- (i) items identified in Annex 3.2/H to this Part,
 - (ii) the following items shown on Drawing No S3P2 019:
 - (a) Admiral's House,
 - (b) St Margaret's Hope, and
 - (iii) the electronic components of variable message signs that are the responsibility of the Traffic Scotland Operations and Infrastructure Services Contractor. For the avoidance of doubt, variable message sign Structures are the responsibility of the Operating Company.
- 1.1.2 All drawings referred to in this annex are contained in Annex 3.2/J of this Part.

This is Annex 3.2/J to Schedule 3 Part 2 referred to in the foregoing Agreement between Scottish Ministers and Amey LG Limited.

SCOTTISH MINISTERS' REQUIREMENTS

SCHEDULE 3 PART 2

EXTENT OF THE UNIT

ANNEX 3.2/J – Drawings

SCOTTISH MINISTERS' REQUIREMENTS

SCHEDULE 3 PART 2

EXTENT OF THE UNIT

ANNEX 3.2/J – Drawings

1. Drawings

1.1 Interfaces Drawings

1.1.1 The following drawings, which are included in this Annex, show interfaces with adjacent Trunk Road units and roads that are the responsibility of other authorities:

(i)	Drawing No S3P2 001	Location of Unit,
(ii)	Drawing No S3P2 002	M9 Junction 1A,
(iii)	Drawing No S3P2 003	A90 Scotstoun Junction – Network 1,
(iv)	Drawing No S3P2 004	A90 Echline Junction – Network 1,
(v)	Drawing No S3P2 005	A90 Ferrytoll Junction – Network 1,
(vi)	Drawing No S3P2 006	M90 Junction 3 Halbeath,
(vii)	Drawing No S3P2 007	A823(M) Pitreavie Spur,
(viii)	Drawing No S3P2 008	M90 Junction 1 Scotstoun – Network 2,
(ix)	Drawing No S3P2 009	A9000 Echline Junction – Network 2,
(x)	Drawing No S3P2 010	M90 Junction 1B Ferrytoll – Network 2,
(xi)	Drawing No S3P2 011	M90 Junction 1A Queensferry – Network 2,
(xii)	Drawing No S3P2 012	M90 Junction 1 Admiralty.

1.2 Other Drawings

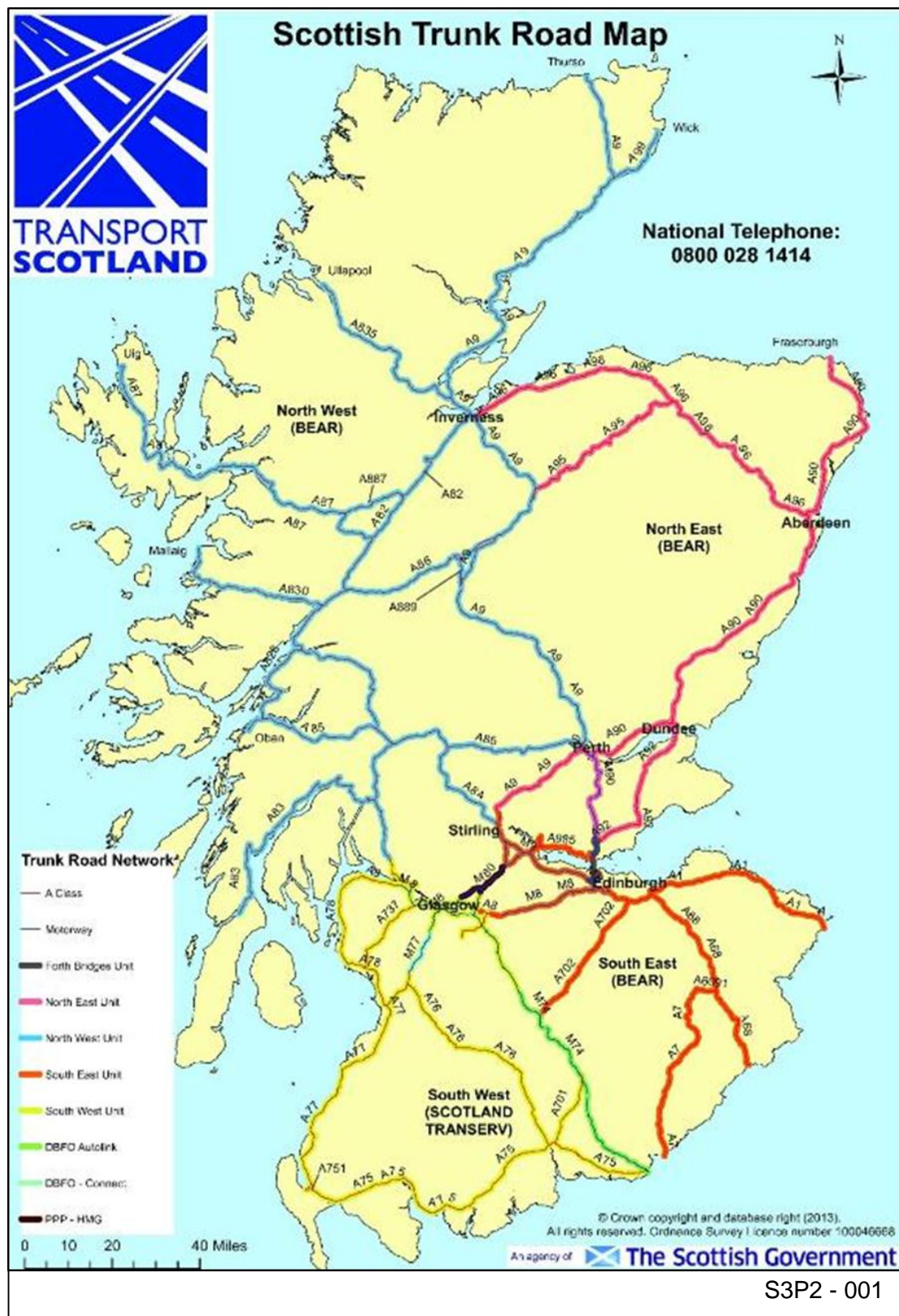
1.2.1 The following drawings, which are included in this Annex, show other Trunk Road items which are included in the Unit:

(i)	Drawing No S3P2 013	Other Trunk Road items which will be included in the Unit,
(ii)	Drawing No S3P2 014	Other Trunk Road items which will be included in the Unit,
(iii)	Drawing No.S3P2 015	Other Trunk Road items which will be included in the Unit,
(iv)	Drawing No.S3P2 016	Other Trunk Road items which will be included in the Unit,
(v)	Drawing No.S3P2 017	Other Trunk Road items which will be included in the Unit.
(vi)	Drawing No.S3P2 018	Other Trunk Road items which will be included in the Unit.

- | | | |
|--------|---------------------|--|
| (vii) | Drawing No.S3P2 019 | Other Trunk Road items which will be included in the Unit. |
| (viii) | Drawing No.S3P2 020 | Other Trunk Road items which will be included in the Unit. |
| (ix) | Drawing No.S3P2 021 | Other Trunk Road items which will be included in the Unit. |

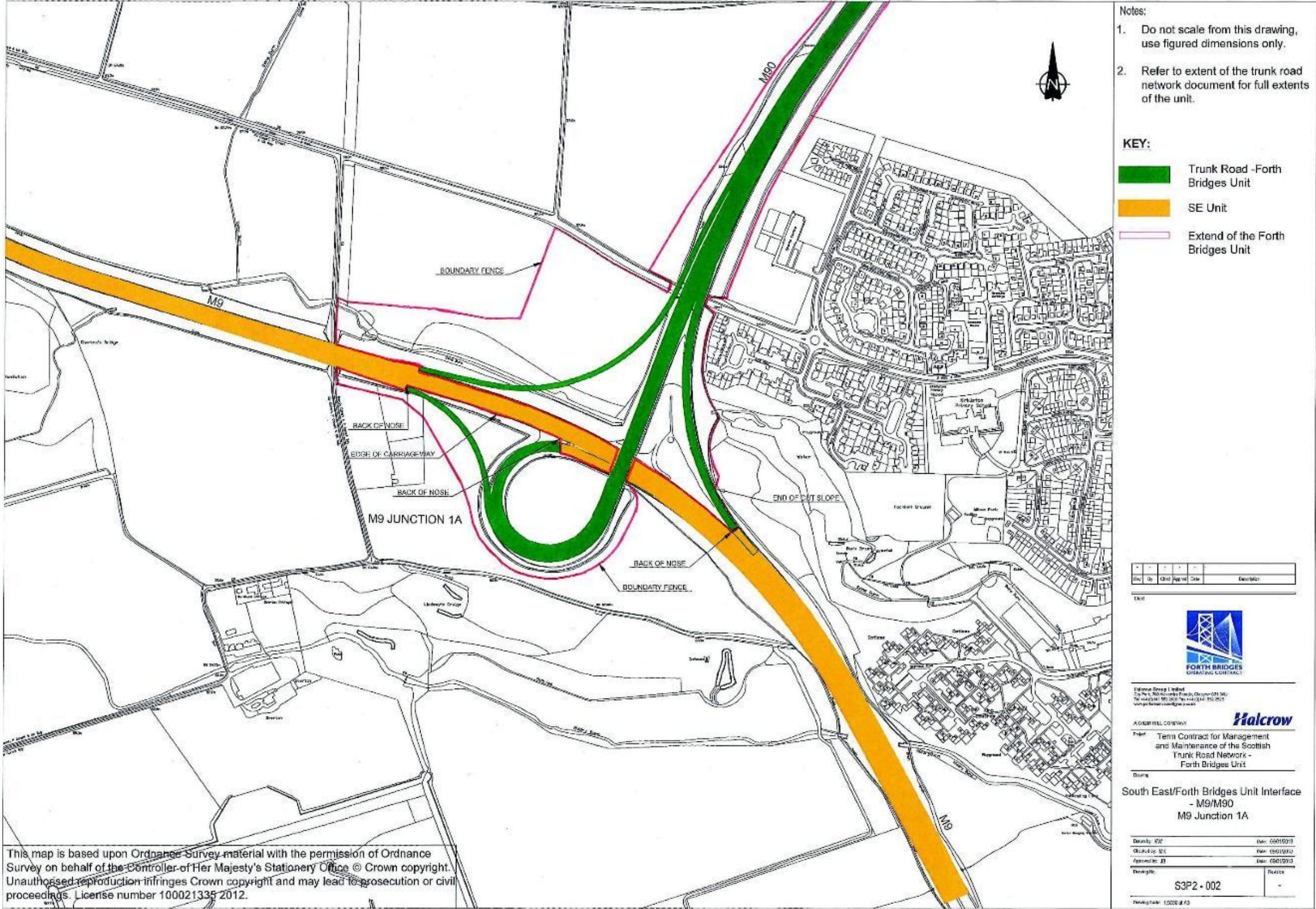
1.3 Drawing Details

- 1.3.1 For details of the items shown on the drawings, reference shall be made to the Records for the Unit including as a minimum the Integrated Road Information System, as-built drawings and land plans.
- 1.3.2 The drawings have been prepared using information available at the time and areas under construction may be subject to change.



signed for and on behalf of The Scottish Ministers
byRoy Brannen.....
on December 2014
atGlasgow.....
Authorised Signatory

signed for and on behalf of AMEY LG Limited
by
on December 2014
atGlasgow.....
Director/Company Secretary/
Authorised Signatory*



signed for and on behalf of The Scottish Ministers

byRoy Brannen.....

on December 2014

atGlasgow.....

Authorised Signatory

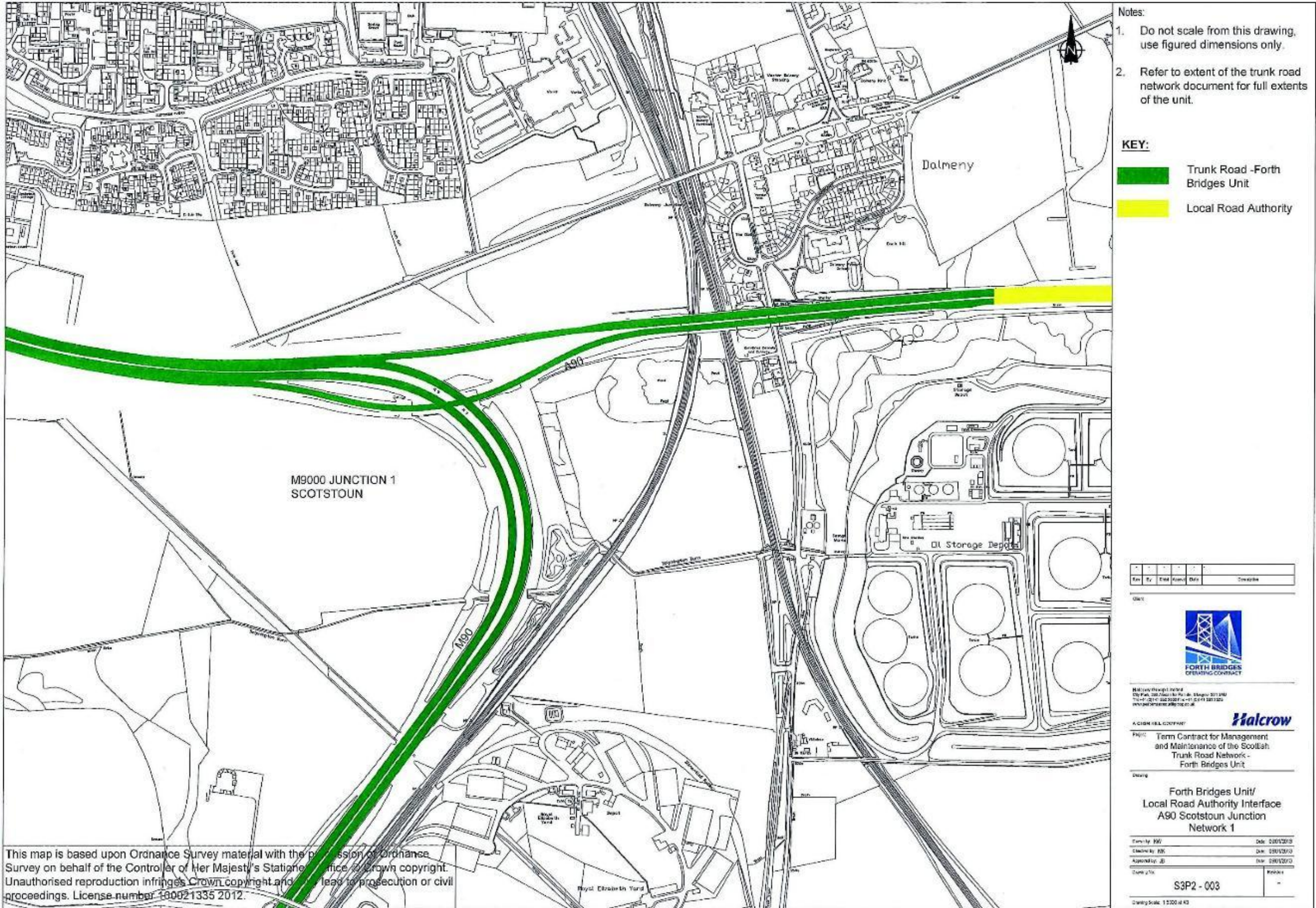
signed for and on behalf of AMEY LG Limited

by

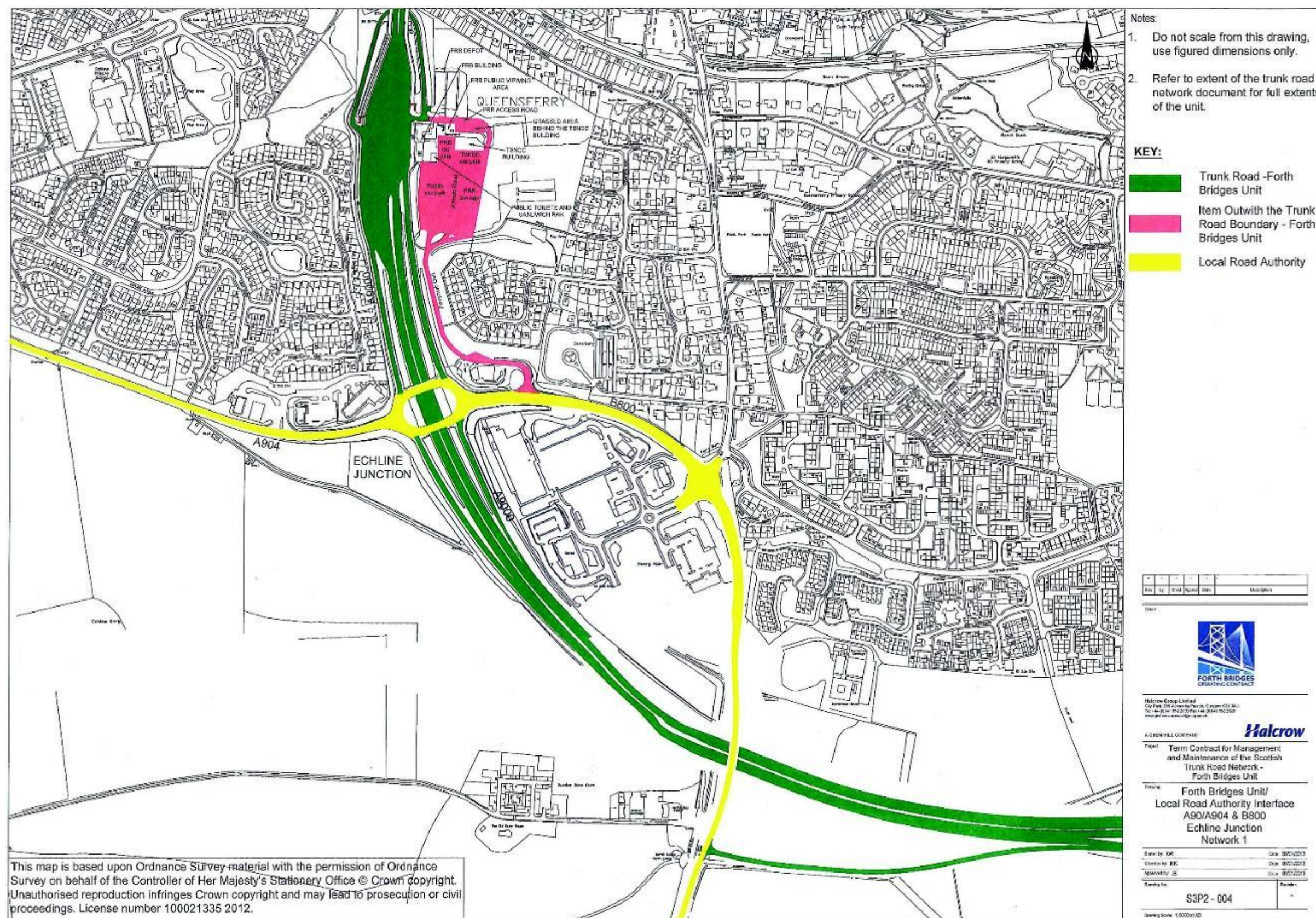
on December 2014

atGlasgow.....

Director/Company Secretary/
Authorised Signatory*



signed for and on behalf of The Scottish Ministers		signed for and on behalf of AMEY LG Limited	
by	Roy Brannen.....	by
on	December 2014	on	December 2014
at	Glasgow.....	at	Glasgow.....
	Authorised Signatory		Director/Company Secretary/ Authorised Signatory*



signed for and on behalf of The Scottish Ministers

byRoy Brannen.....

on December 2014

atGlasgow.....

signed for and on behalf of AMEY LG Limited

by

on December 2014

atGlasgow.....

.....
Director/Company Secretary/
Authorised Signatory*

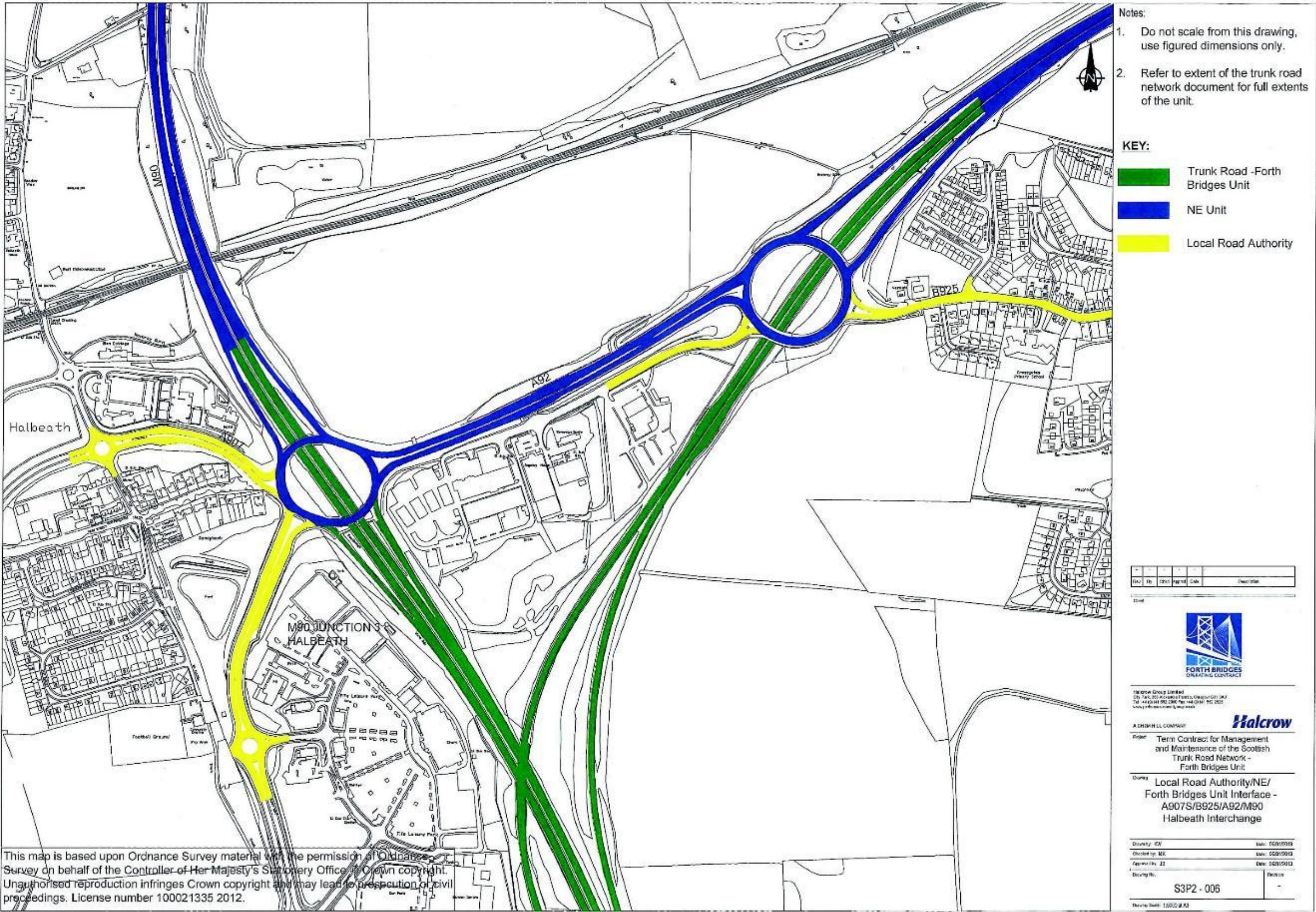


signed for and on behalf of AMEY LG Limited

by

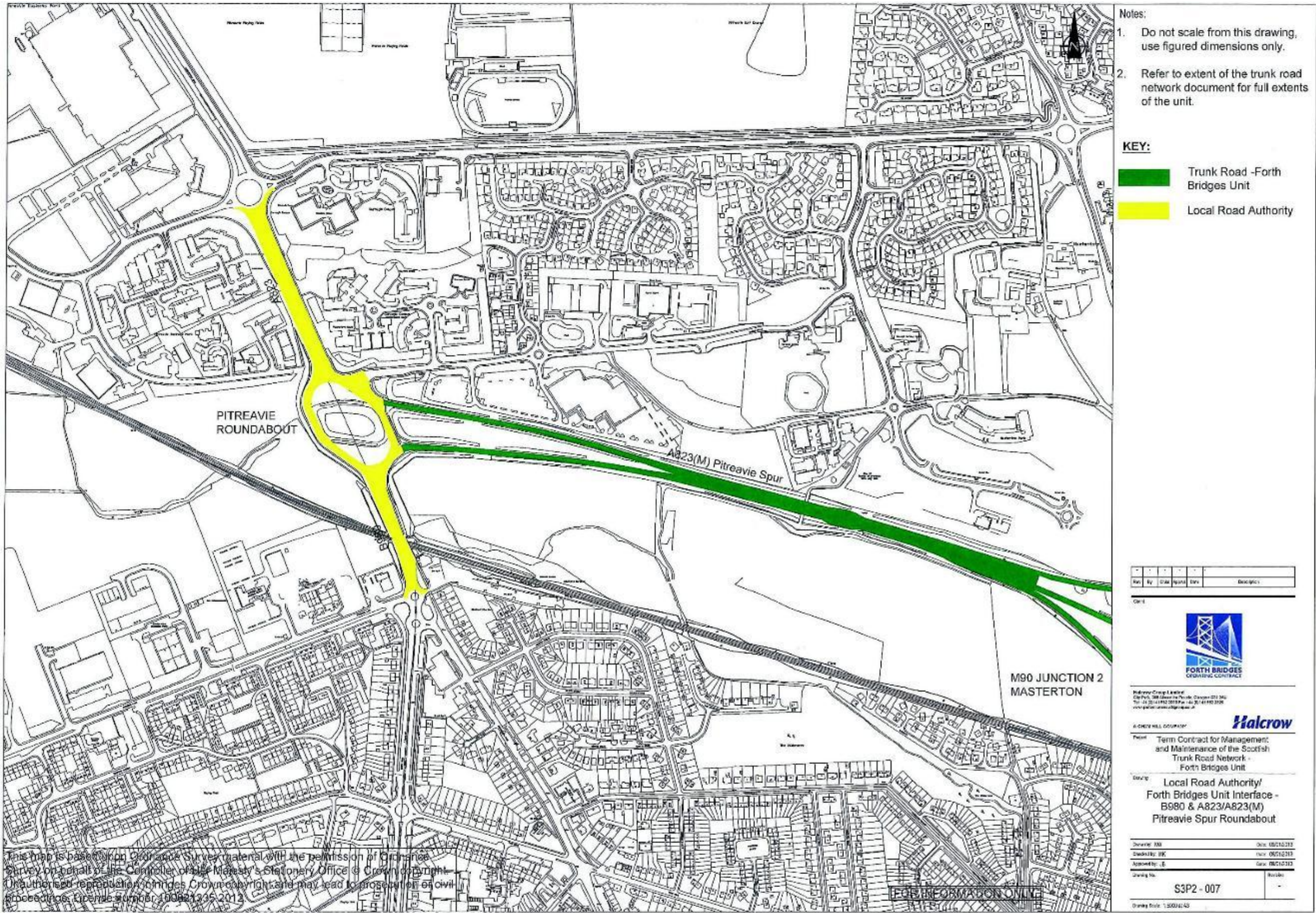
on December 2014

.....
Director/Company Secretary/
Authorised Signatory*



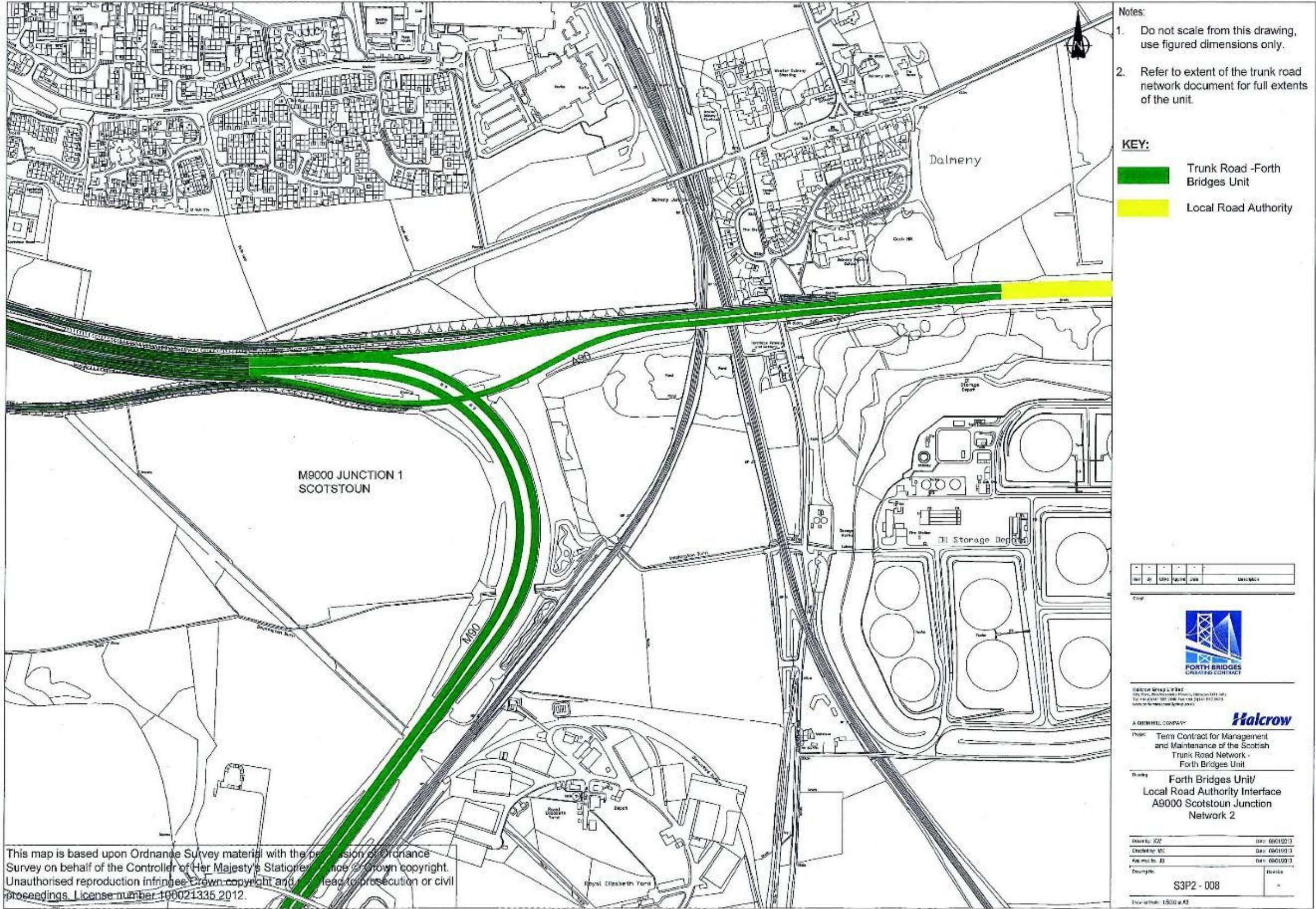
signed for and on behalf of The Scottish Ministers
byRoy Brannen.....
on December 2014
atGlasgow.....
Authorised Signatory

signed for and on behalf of AMEY LG Limited
by
on December 2014
atGlasgow.....
Director/Company Secretary/
Authorised Signatory*



signed for and on behalf of The Scottish Ministers
byRoy Brannen.....
on December 2014
atGlasgow.....
Authorised Signatory

signed for and on behalf of AMEY LG Limited
by
on December 2014
atGlasgow.....
Director/Company Secretary/
Authorised Signatory*



signed for and on behalf of The Scottish Ministers

byRoy Brannen.....

on December 2014

atGlasgow.....

Authorised Signatory

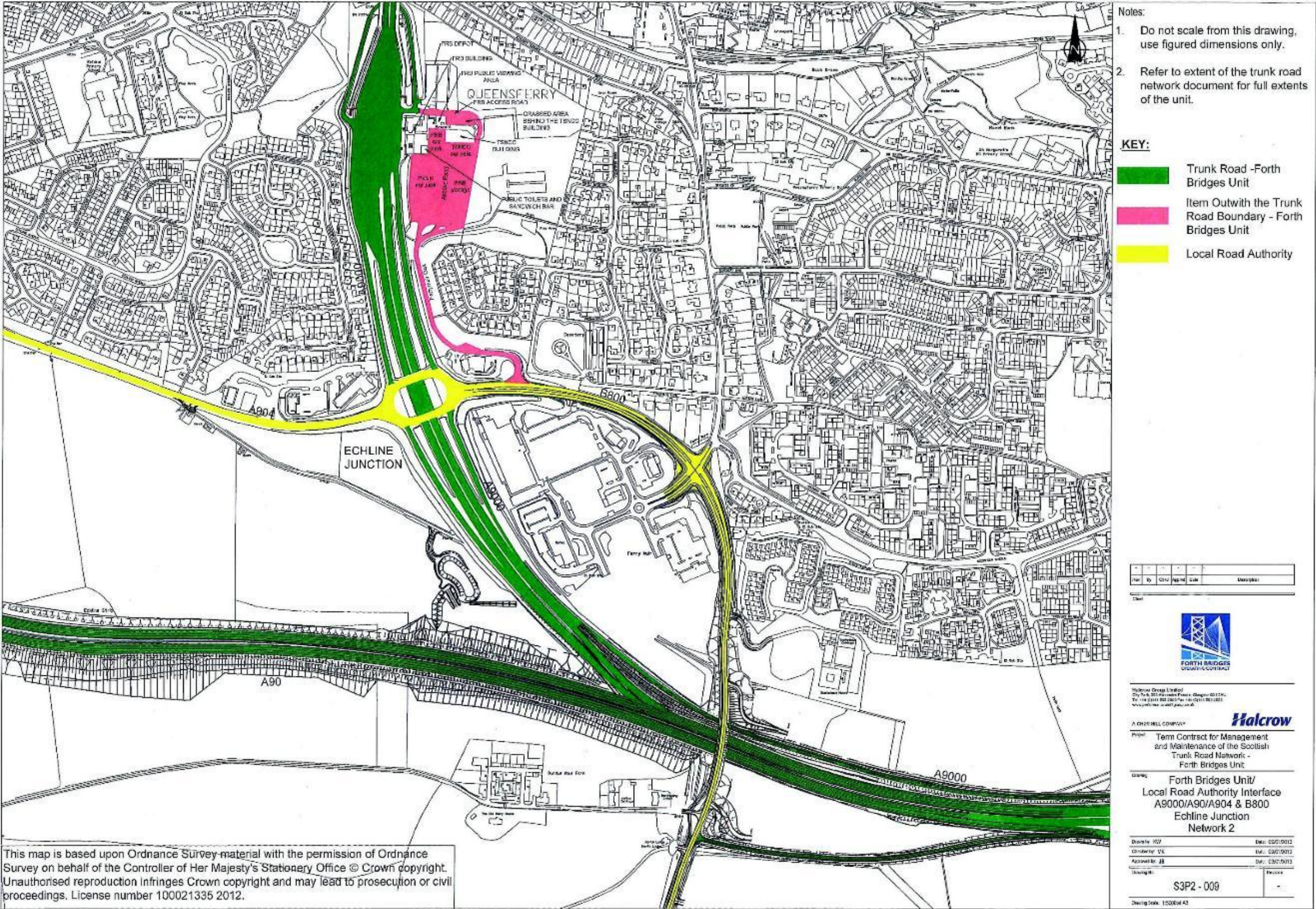
signed for and on behalf of AMEY LG Limited

by

on December 2014

atGlasgow.....

Director/Company Secretary/
Authorised Signatory*



signed for and on behalf of The Scottish Ministers

byRoy Brannen.....

on December 2014

atGlasgow.....

Authorised Signatory

signed for and on behalf of AMEY LG Limited

by

on December 2014

atGlasgow.....

Director/Company Secretary/ Authorised Signatory*

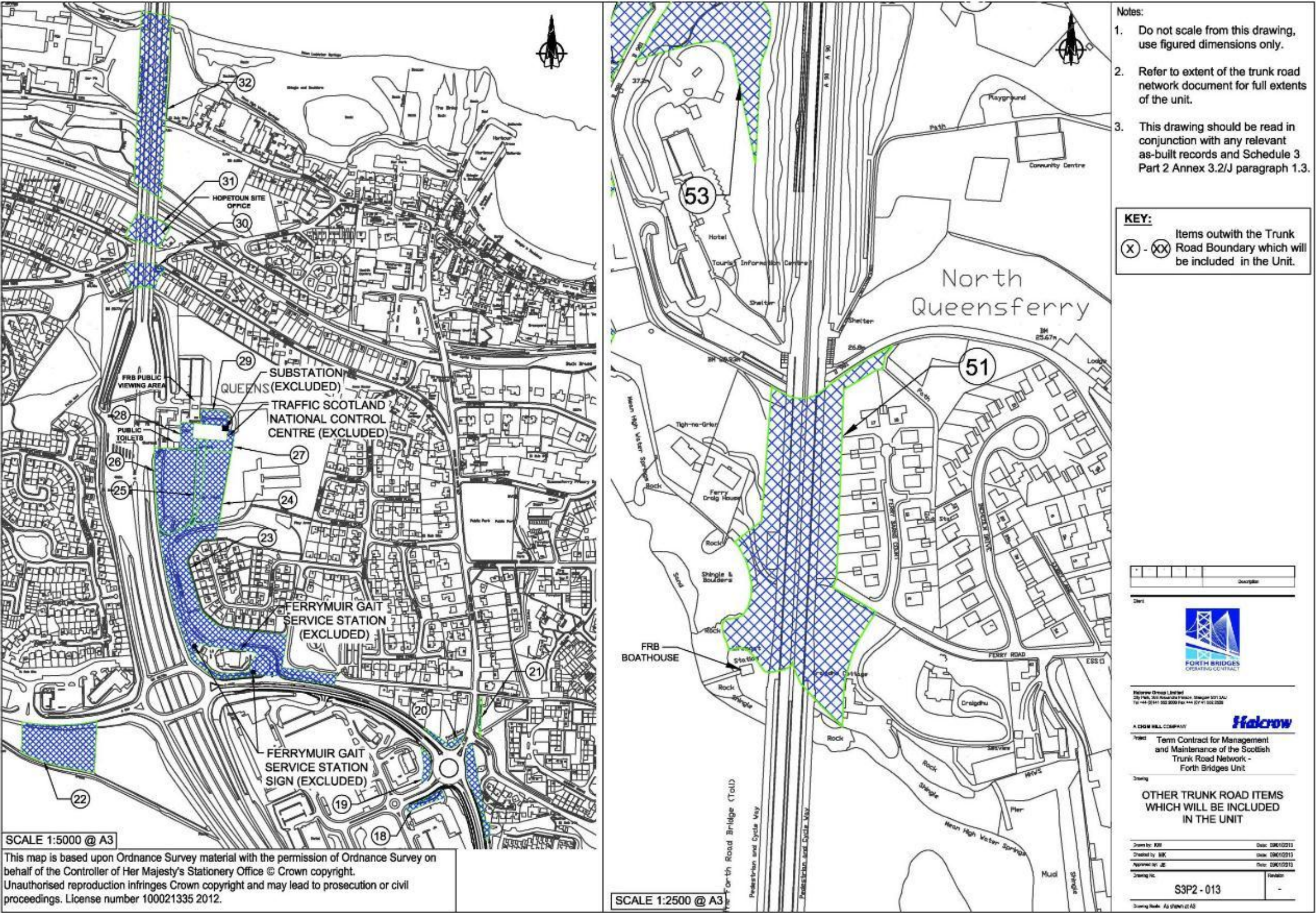
Drawing Scale: 1500:1 AS

.....
Director/Company Secretary/
Authorised Signatory*

atGlasgow.....



signed for and on behalf of The Scottish Ministers	signed for and on behalf of AMEY LG Limited
byRoy Brannen.....	by
on December 2014	on December 2014
atGlasgow.....	atGlasgow.....
Authorised Signatory	Director/Company Secretary/ Authorised Signatory*



signed for and on behalf of The Scottish Ministers	signed for and on behalf of AMEY LG Limited
byRoy Brannen.....	by
on December 2014	on December 2014
atGlasgow.....	atGlasgow.....
Authorised Signatory	Director/Company Secretary/ Authorised Signatory*



signed for and on behalf of The Scottish Ministers

byRoy Brannen.....

on December 2014

atGlasgow.....

Authorised Signatory

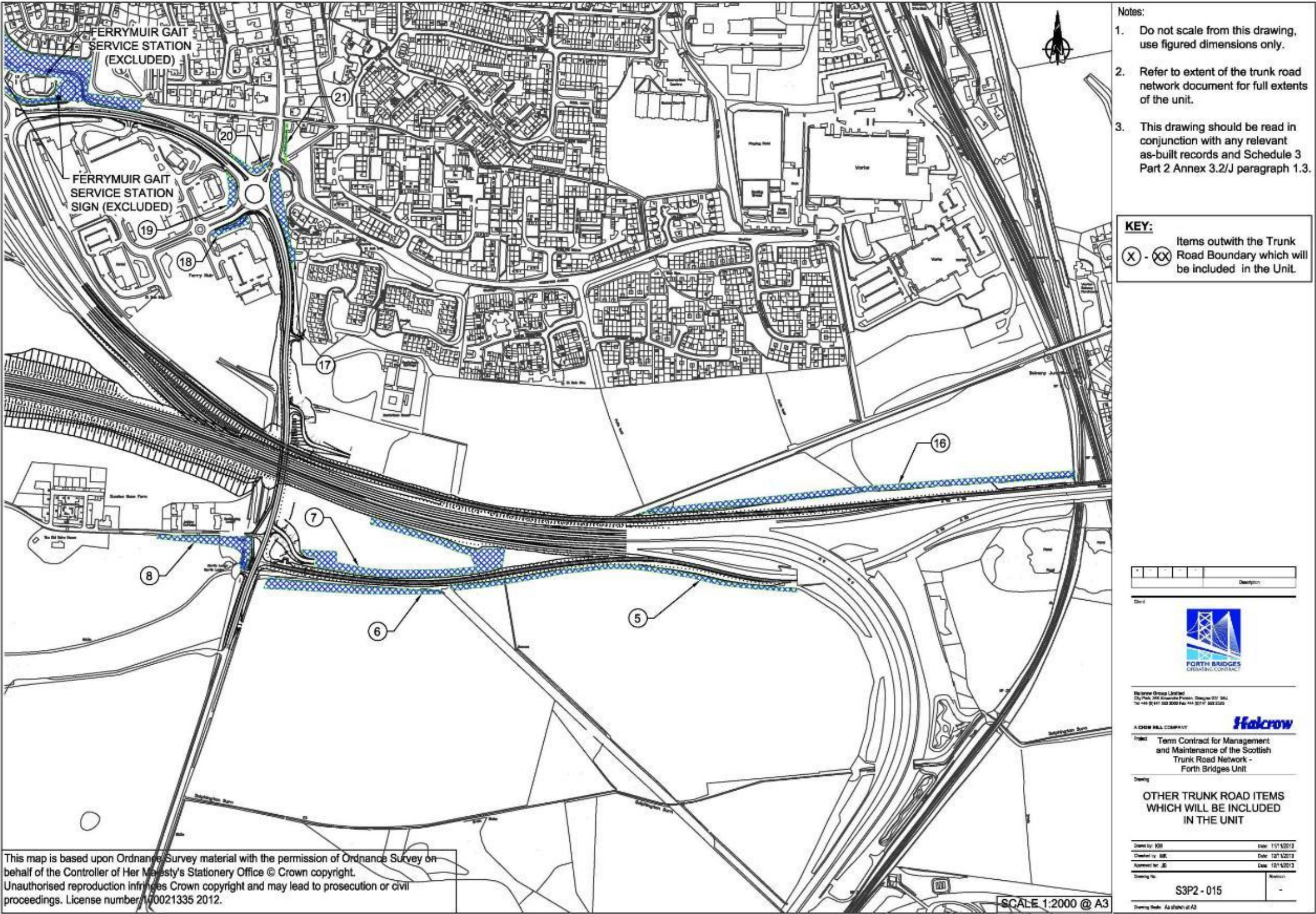
signed for and on behalf of AMEY LG Limited

by

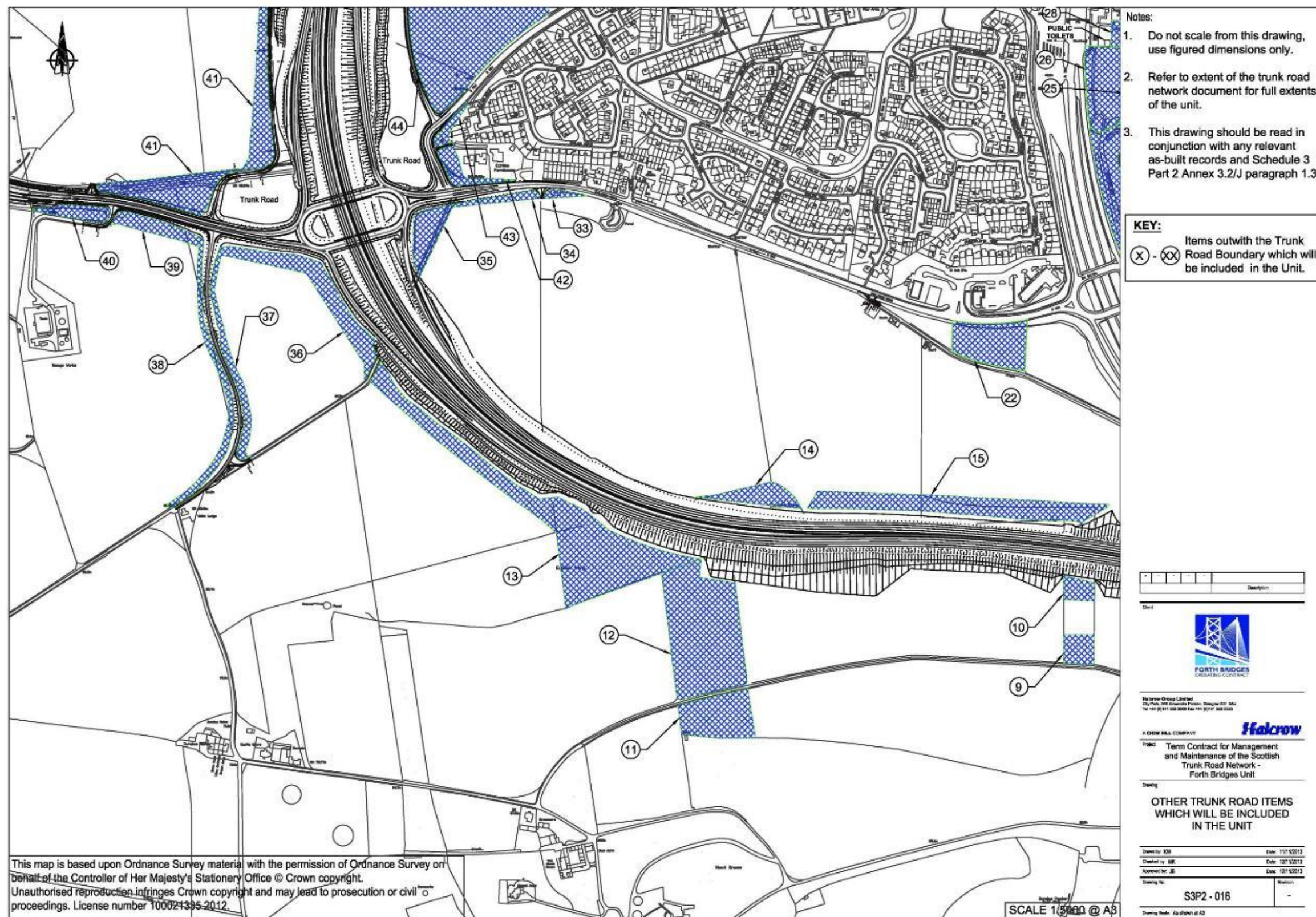
on December 2014

atGlasgow.....

Director/Company Secretary/
Authorised Signatory*



signed for and on behalf of The Scottish Ministers	signed for and on behalf of AMEY LG Limited
byRoy Brannen.....	by
on December 2014	on December 2014
atGlasgow.....	atGlasgow.....
Authorised Signatory	Director/Company Secretary/ Authorised Signatory*



signed for and on behalf of The Scottish Ministers

byRoy Brannen.....

on December 2014

atGlasgow.....

.....
 Authorised Signatory

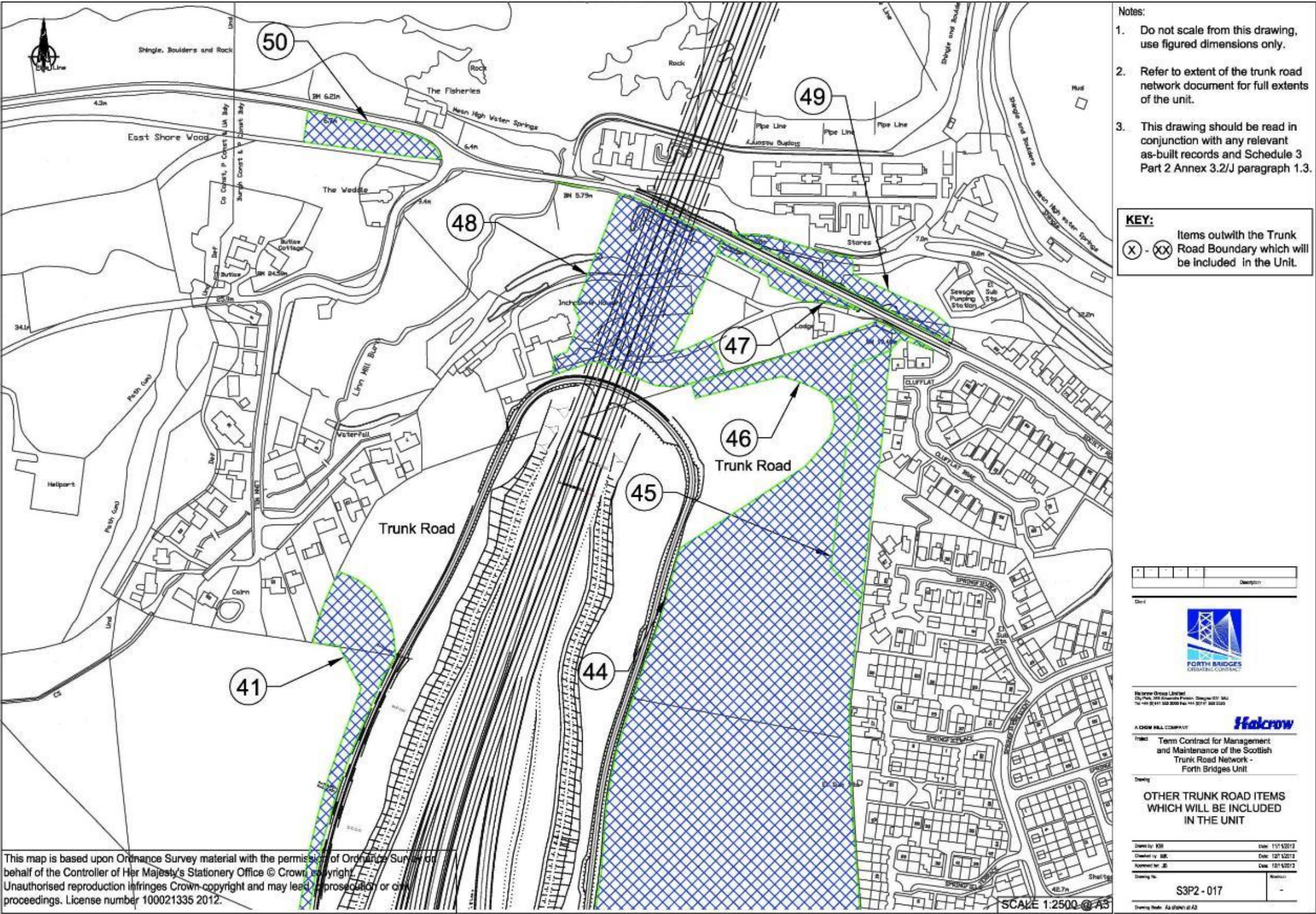
signed for and on behalf of AMEY LG Limited

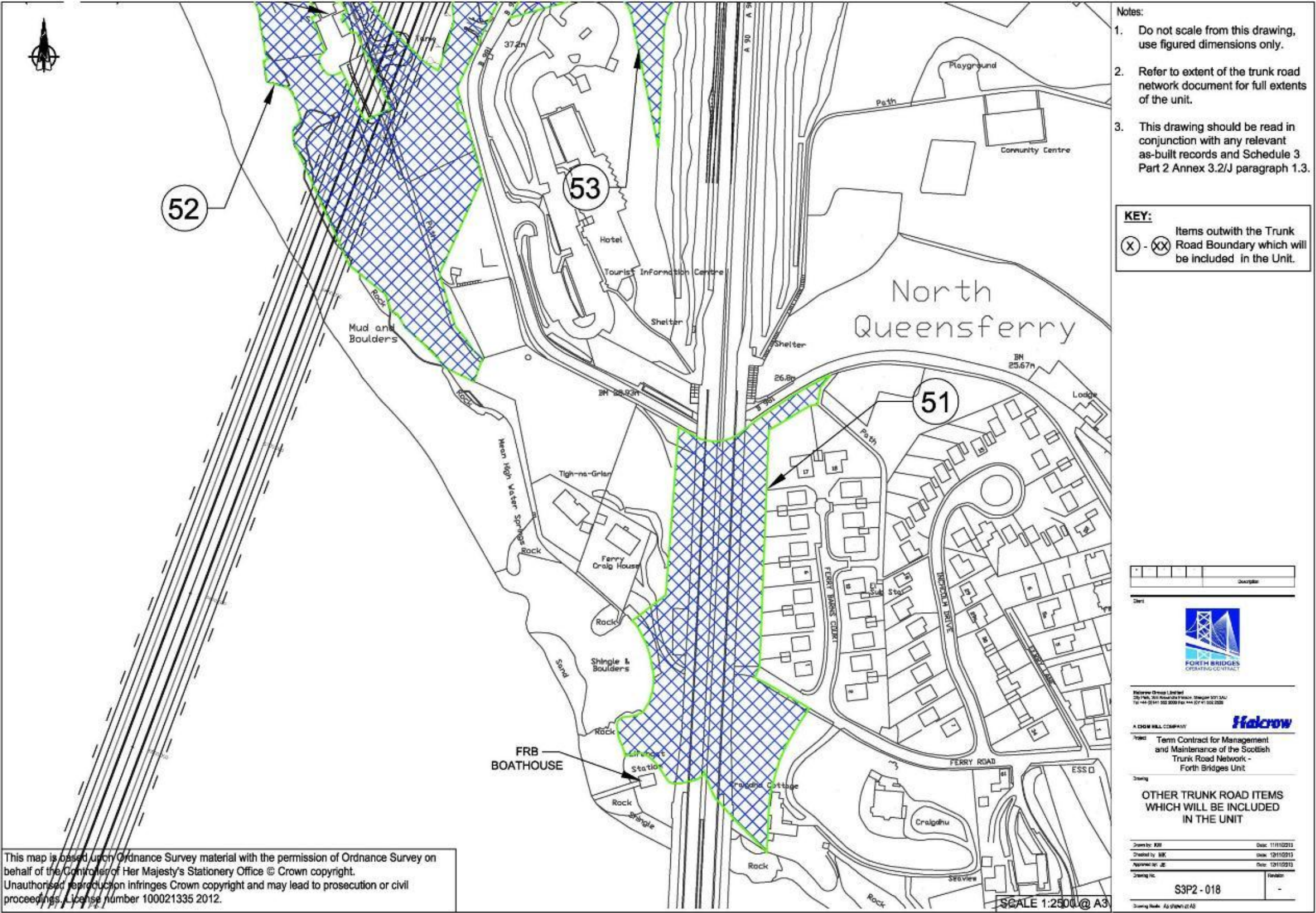
by

on December 2014

atGlasgow.....

.....
Director/Company Secretary/
Authorised Signatory*





signed for and on behalf of The Scottish Ministers

byRoy Brannen.....

on December 2014

atGlasgow.....

Authorised Signatory

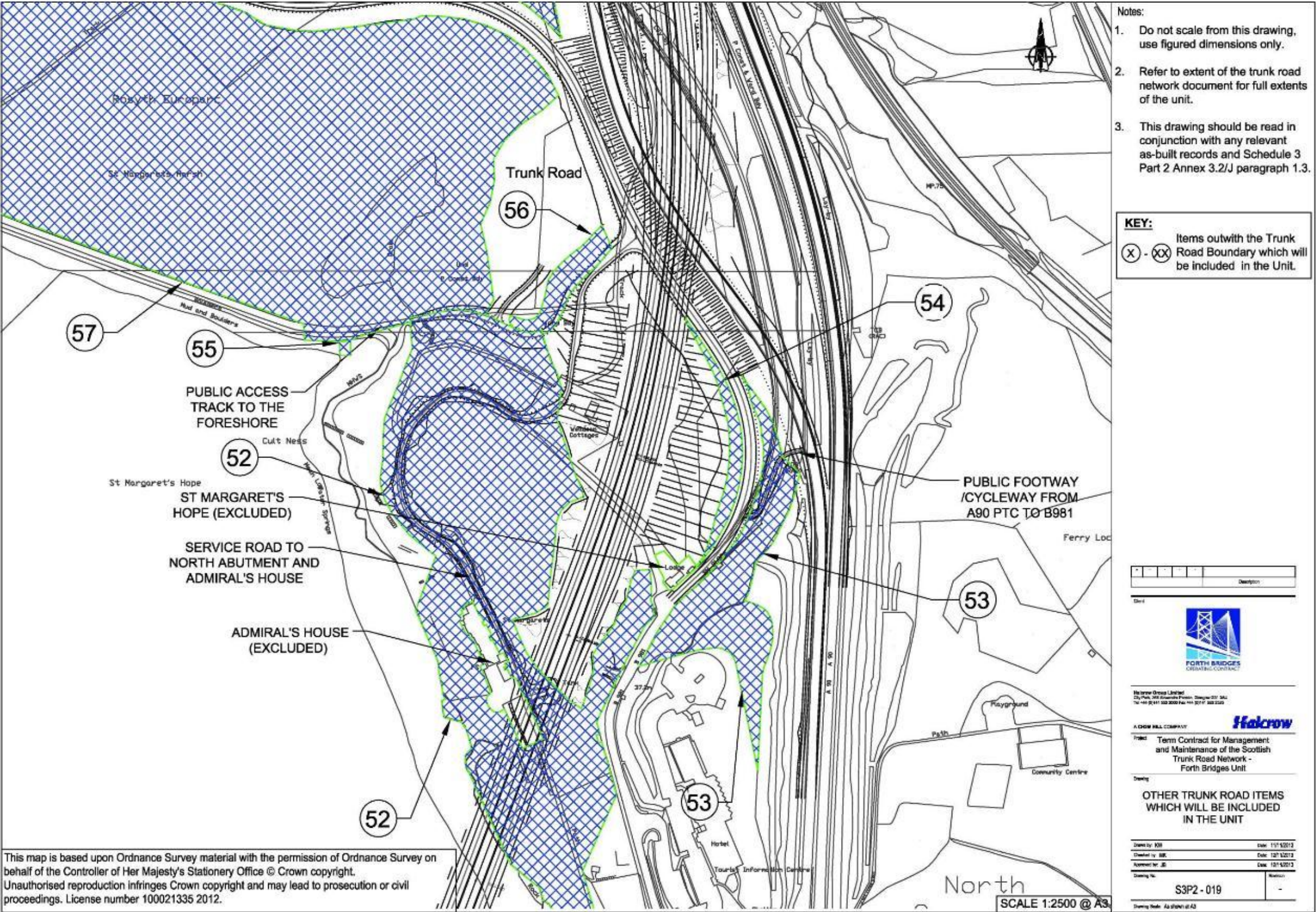
signed for and on behalf of AMEY LG Limited

by

on December 2014

atGlasgow.....

Director/Company Secretary/
Authorised Signatory*



signed for and on behalf of The Scottish Ministers

byRoy Brannen.....

on December 2014

atGlasgow.....

Authorised Signatory

signed for and on behalf of AMEY LG Limited

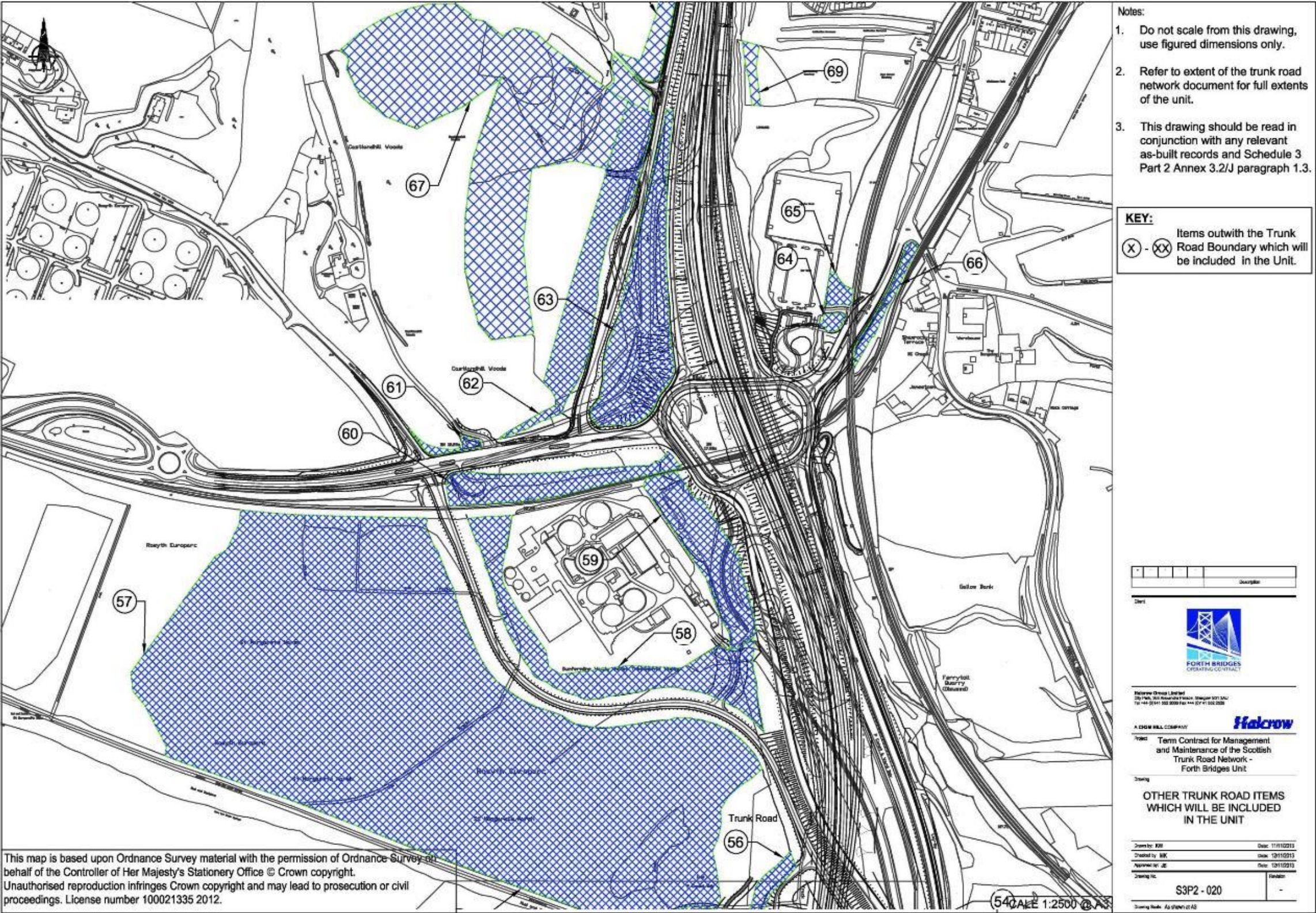
by

on December 2014

atGlasgow.....

Director/Company Secretary/

Authorised Signatory*



signed for and on behalf of The Scottish Ministers

byRoy Brannen.....

on December 2014

atGlasgow.....

Authorised Signatory

signed for and on behalf of AMEY LG Limited

by

on December 2014

atGlasgow.....

Director/Company Secretary/
Authorised Signatory*



signed for and on behalf of The Scottish Ministers		signed for and on behalf of AMEY LG Limited	
by	Roy Brannen.....	by	
on	December 2014	on	December 2014
at	Glasgow.....	at	Glasgow.....
	Authorised Signatory		Director/Company Secretary/ Authorised Signatory*