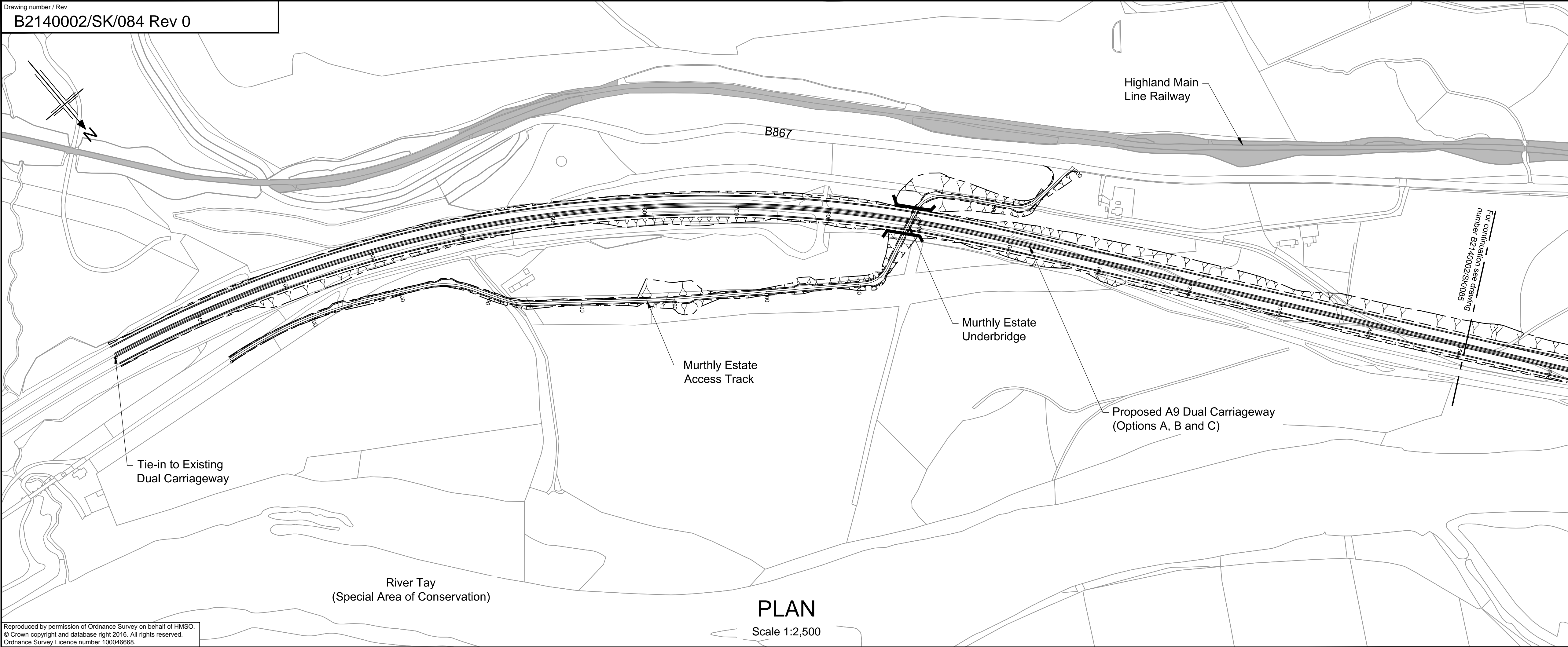


Appendix F. Plan & Profile Drawings



Reproduced by permission of Ordnance Survey on behalf of HMSO.
© Crown copyright and database right 2016. All rights reserved.
Ordnance Survey Licence number 100046668.

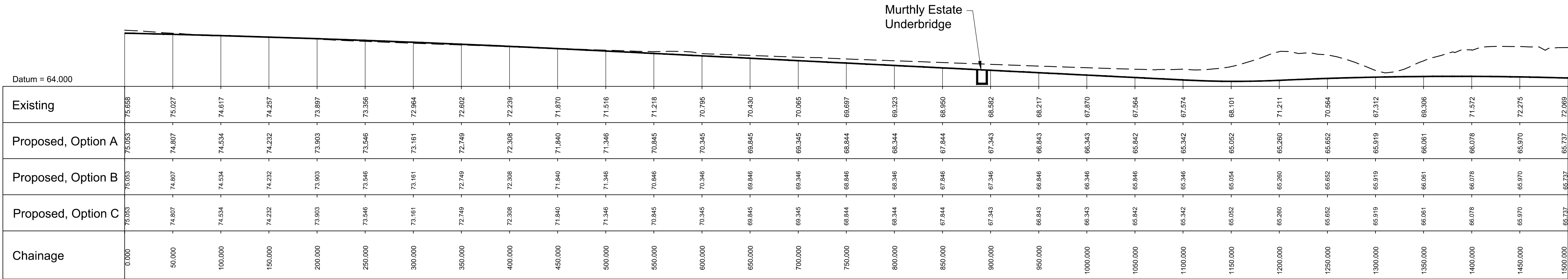
PLAN

Scale 1:2,500

- Legend:
- Natural Earthwork Slope (1:2 or shallower)
 - Reinforced Earthwork Slope (Steeper than 1:2, shallower than 1:0.4)
 - Bridge Structure
 - Retaining Wall Structure
 - Highland Main Line Railway

- Profile Key:
- Existing Ground
 - Proposed, Option A
 - Proposed, Option B
 - Proposed, Option C
 - Proposed, Options A, B & C

File: C:\Temp\AcPublish_7948\B2140002-SK084 Rev 0_Route Opis P&P_Sht1of6.dwg Date: Jan 25, 2016 - 10:56am Plotted by: Findlat



PROFILE

Scale 1:2,500 Horizontal, 1:500 Vertical

0	19/01/16	For information	TF	CMcP	AJB	KLPS
Rev	Rev. Date	Purpose of revision	Drawn	Checked	Reviewed	Approved

JACOBS

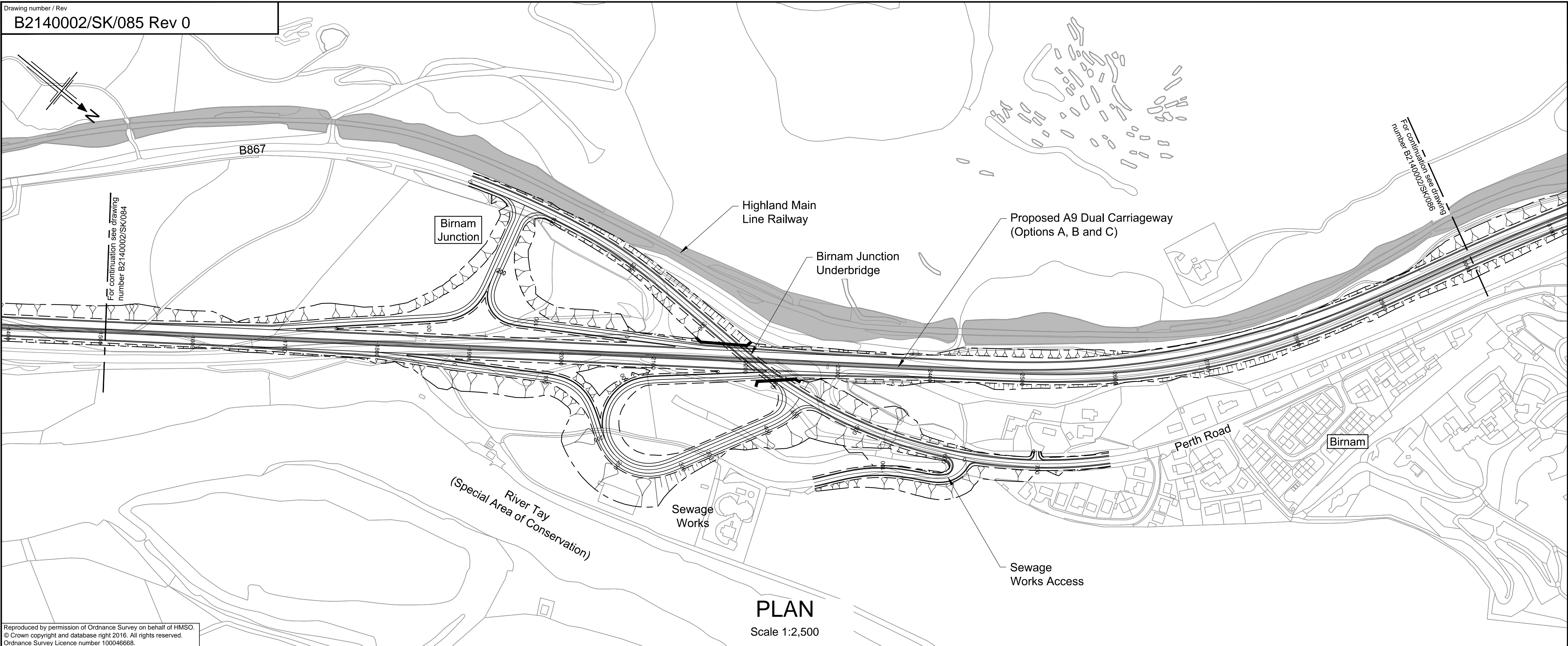
85 Balmuir St, Glasgow, G2 7HX
Tel: +44(0)141 243 8000 Fax: +44(0)141 226 3109
www.jacobs.com



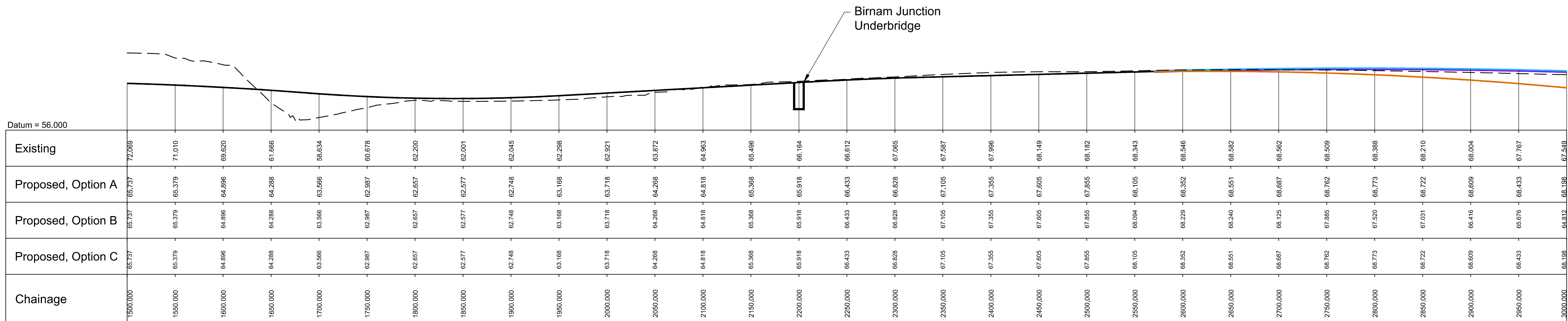
Drawing title
**DMRB STAGE 2
PASS OF BIRNAM TO TAY CROSSING
ROUTE OPTIONS PLAN AND PROFILES
CH. 0 - CH. 1500, SHEET 1 OF 6**

Drawing status FOR INFORMATION		
Scale	AS SHOWN @ A1	DO NOT SCALE
Jacobs No.	B2140002	
Drawing number	B2140002/SK/084	Rev 0

This drawing is not to be used in whole or part other than for the intended purpose and project as defined on this drawing. Refer to the contract for full terms and conditions.








Reproduced by permission of Ordnance Survey on behalf of HMSO.
© Crown copyright and database right 2016. All rights reserved.
Ordnance Survey Licence number 100046668.







PROFILE

Scale 1:2,500 Horizontal, 1:500 Vertical

- Legend:**
-  Natural Earthwork Slope (1:2 or shallower)
 -  Reinforced Earthwork Slope
(Steeper than 1:2, shallower than 1:0.4)
 -  Bridge Structure
 -  Retaining Wall Structure
 -  Highland Main Line Railway

Profile Key:

-  Existing Ground
 Proposed, Option A
 Proposed, Option B
 Proposed, Option C
 Proposed, Options A, B & C

0	19/01/16	For information	TF	CMcP	AJB	KLPS
Rev	Rev. Date	Purpose of revision	Drawn	Checked	Reviewed	Approved

JACOBS

95 Bothwell St, Glasgow, G2 7HX
Tel: +44(0)141 243 8000 Fax: +44(0)141 226 3109
www.jacobs.com

Client



Project



Drawing title

DMRB STAGE 2
PASS OF BIRNAM TO TAY CROSSING
ROUTE OPTIONS PLAN AND PROFILES
CH. 1500 - CH. 3000, SHEET 2 OF 6

Drawing status:

FOR INFORMATION

Scale	AS SHOWN @ A1	DO NOT SCALE
-------	---------------	--------------

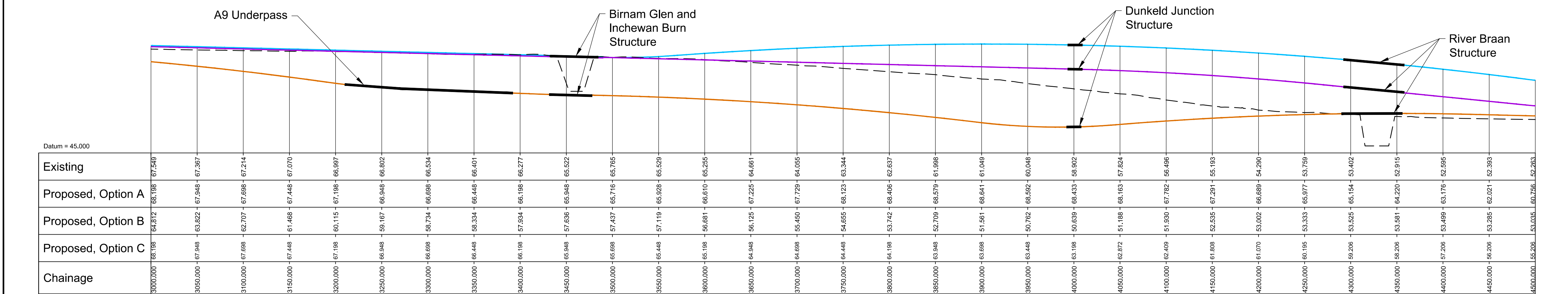
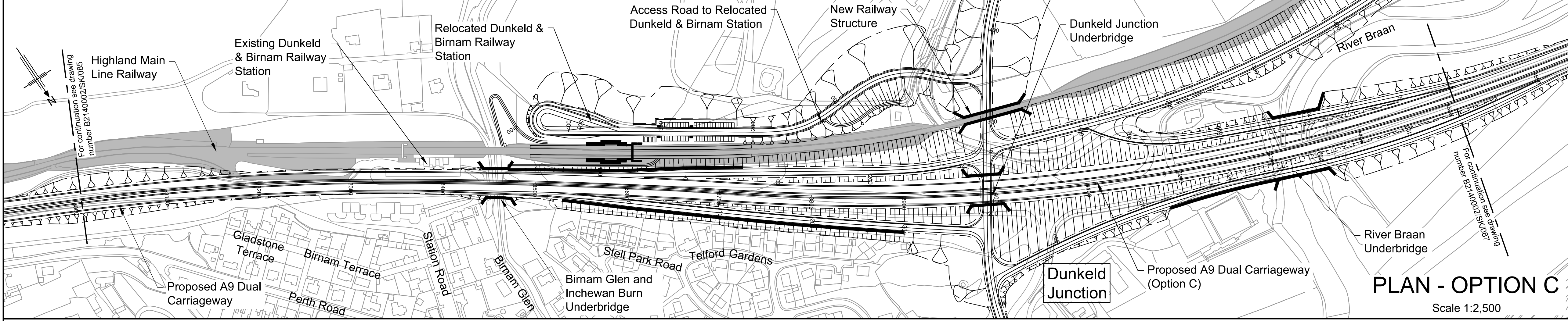
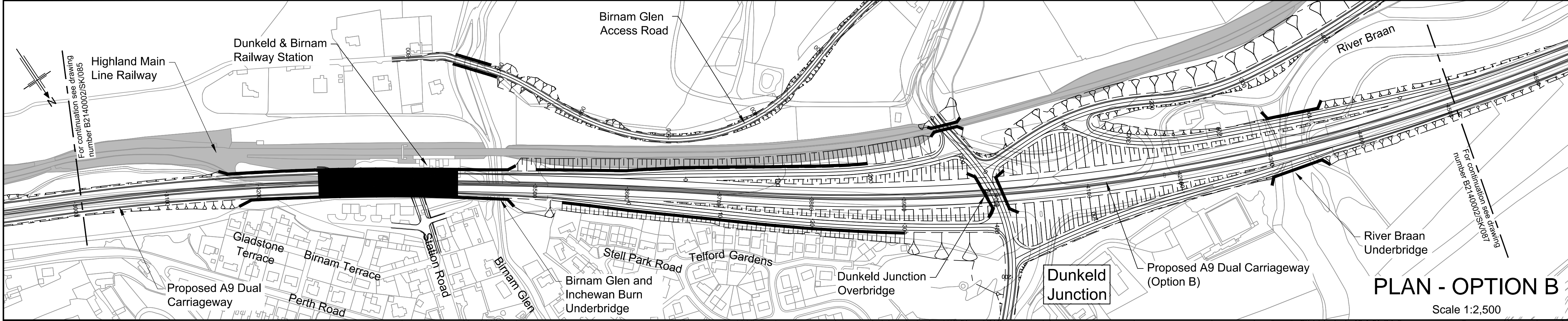
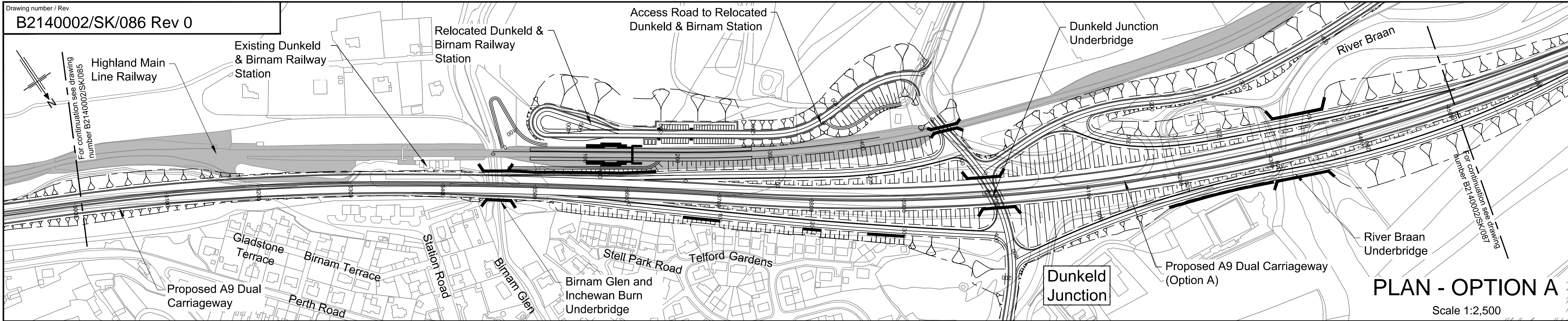
Joseph M.

Success No.

Drawing number

B2140002/SK/085

This drawing is not to be used in whole or part other than for the intended purpose and project as defined on this drawing. Refer to the contract for full terms and conditions.



Legend:

- Natural Earthwork Slope (1:2 or shallower)
- Reinforced Earthwork Slope (Steeper than 1:2, shallower than 1:0.4)
- Bridge Structure
- Retaining Wall Structure
- Highland Main Line Railway

Profile Key:

- Existing Ground
- Proposed, Option A
- Proposed, Option B
- Proposed, Option C
- Proposed, Options A, B & C

0	19/01/16	For information	TF	CMcP	AJB	KLPS
Rev	Rev. Date	Purpose of revision	Drawn	Checked	Reviewed	Approved

JACOBS

96 Balmhall St, Glasgow, G2 7HX
Tel: +44(0)141 243 8000 Fax: +44(0)141 226 3109
www.jACOBS.com

Client

TRANSPORT SCOTLAND
COMHDHAIL ALBA

Project

A9 DUALLING
PERTH TO INVERNESS
Pass of Birnam to Tay Crossing

Drawing title

DMRB STAGE 2
PASS OF BIRNAM TO TAY CROSSING
ROUTE OPTIONS PLAN AND PROFILES
CH. 3000 - CH. 4500, SHEET 3 OF 6

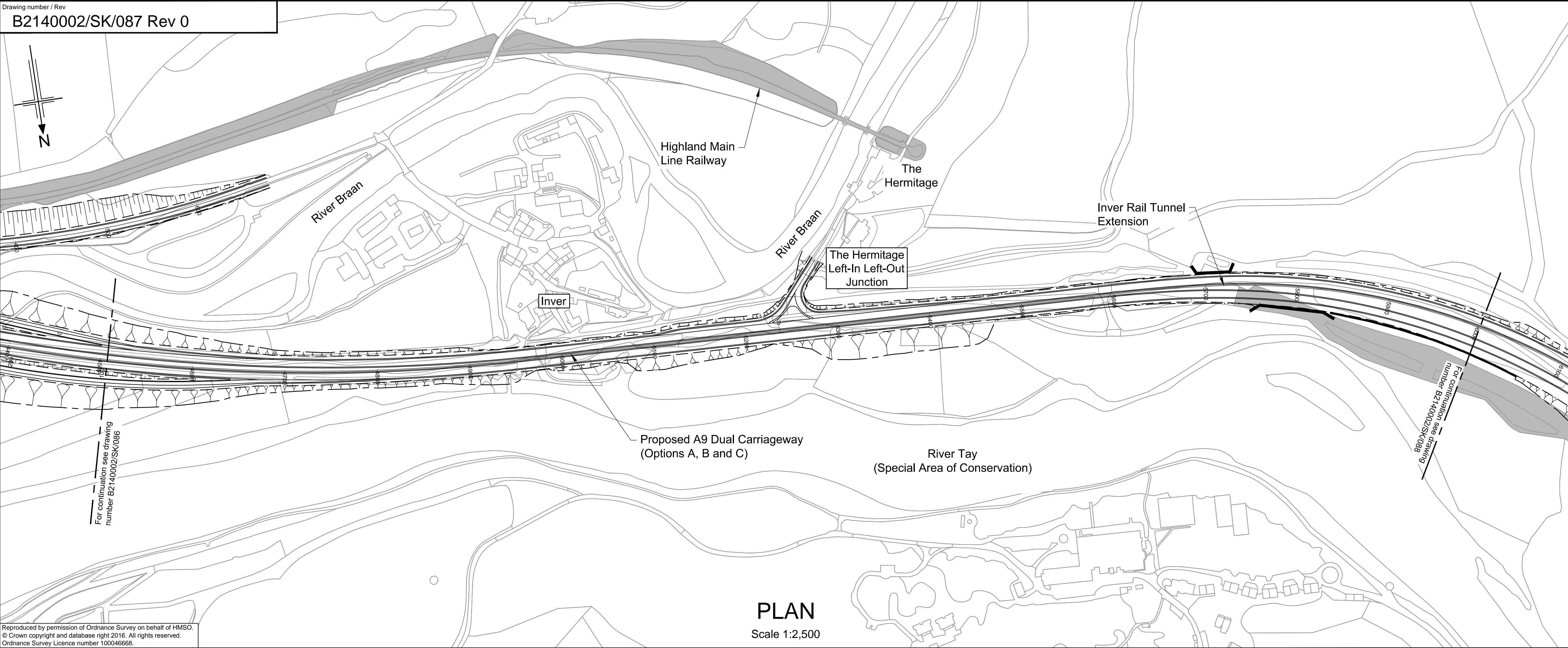
Drawing status

FOR INFORMATION

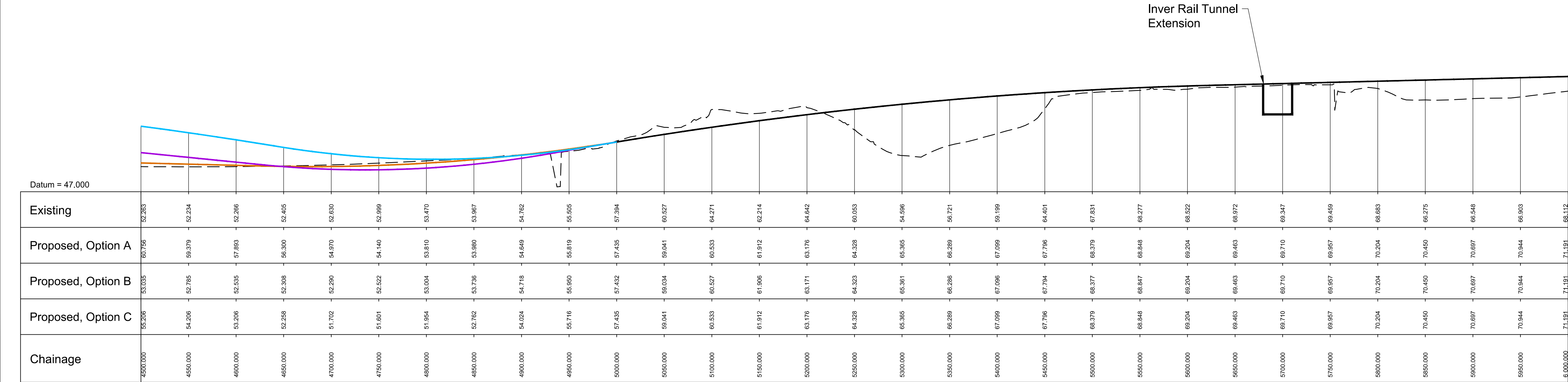
Scale	AS SHOWN @ A1	DO NOT SCALE
JACOBS No.	B2140002	
Drawing number	B2140002/SK/086	Rev 0

This drawing is not to be used in whole or part other than for the intended purpose and project as defined on this drawing. Refer to the contract for full terms and conditions.

File: P:\Data\B2140002 A9 Binnam to Tay Crossing\Sketches\B2140002-SK-087 Rev 0_Route Optis P&P Sh4of6.dwg Date: Jan 25, 2016 - 10:57am Plotted by: Findlat



- Legend:
- Natural Earthwork Slope (1:2 or shallower)
 - Reinforced Earthwork Slope (Steeper than 1:2, shallower than 1:0.4)
 - Bridge Structure
 - Retaining Wall Structure
 - Highland Main Line Railway
- Profile Key:
- Existing Ground
 - Proposed, Option A
 - Proposed, Option B
 - Proposed, Option C
 - Proposed, Options A, B & C



PROFILE

Scale 1:2,500 Horizontal, 1:500 Vertical

0	19/01/16	For information	TF	CMcP	AJB	KLPS
Rev	Rev. Date	Purpose of revision	Drawn	Checked	Reviewed	Approved

JACOBS
95 Bonhill St, Glasgow, G2 7HX
Tel: +44(0)141 243 8000 Fax: +44(0)141 226 3109
www.jacobs.com



Drawing title

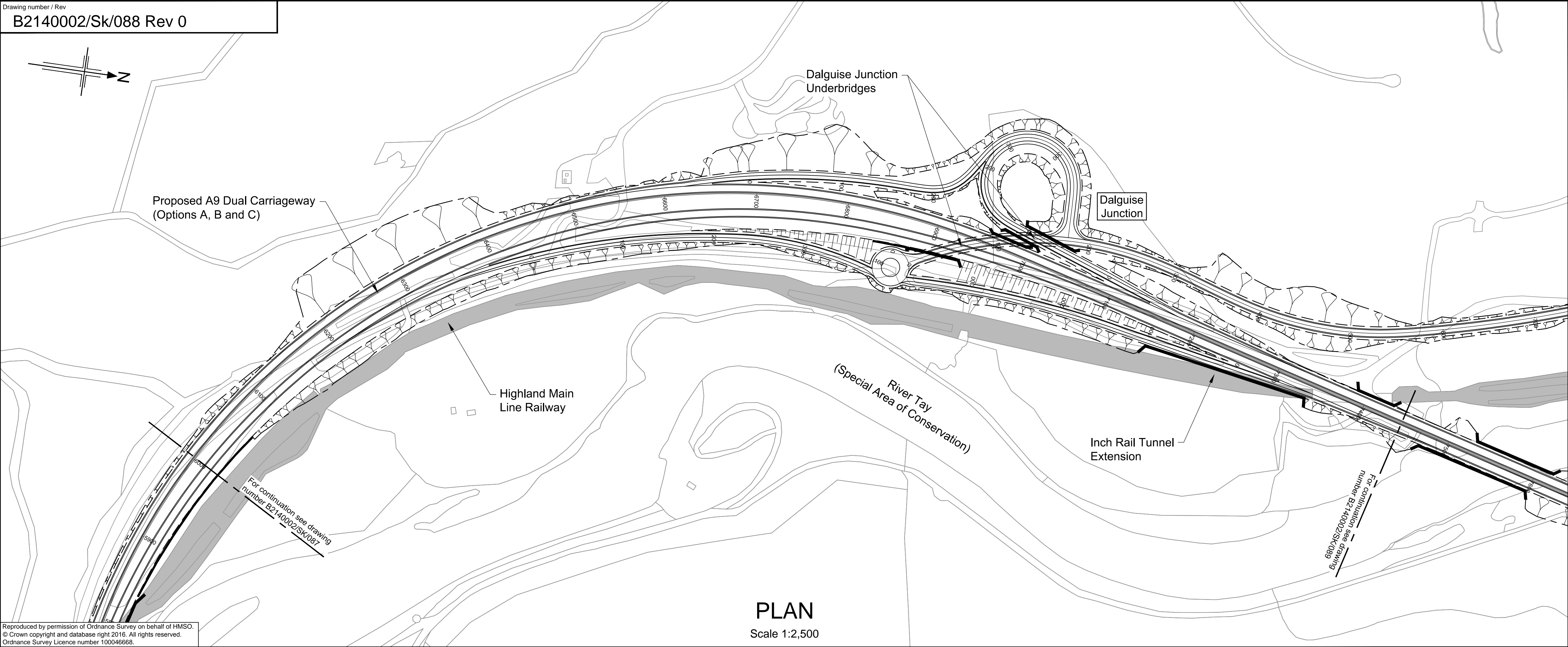
**DMRB STAGE 2
PASS OF BIRNAM TO TAY CROSSING
ROUTE OPTIONS PLAN AND PROFILES
CH. 4500 - CH. 6000, SHEET 4 OF 6**

Drawing status		
FOR INFORMATION		
Scale	AS SHOWN @ A1	DO NOT SCALE
Jacobs No.	B2140002	
Drawing number	B2140002/S2/0110/087	Rev
		0

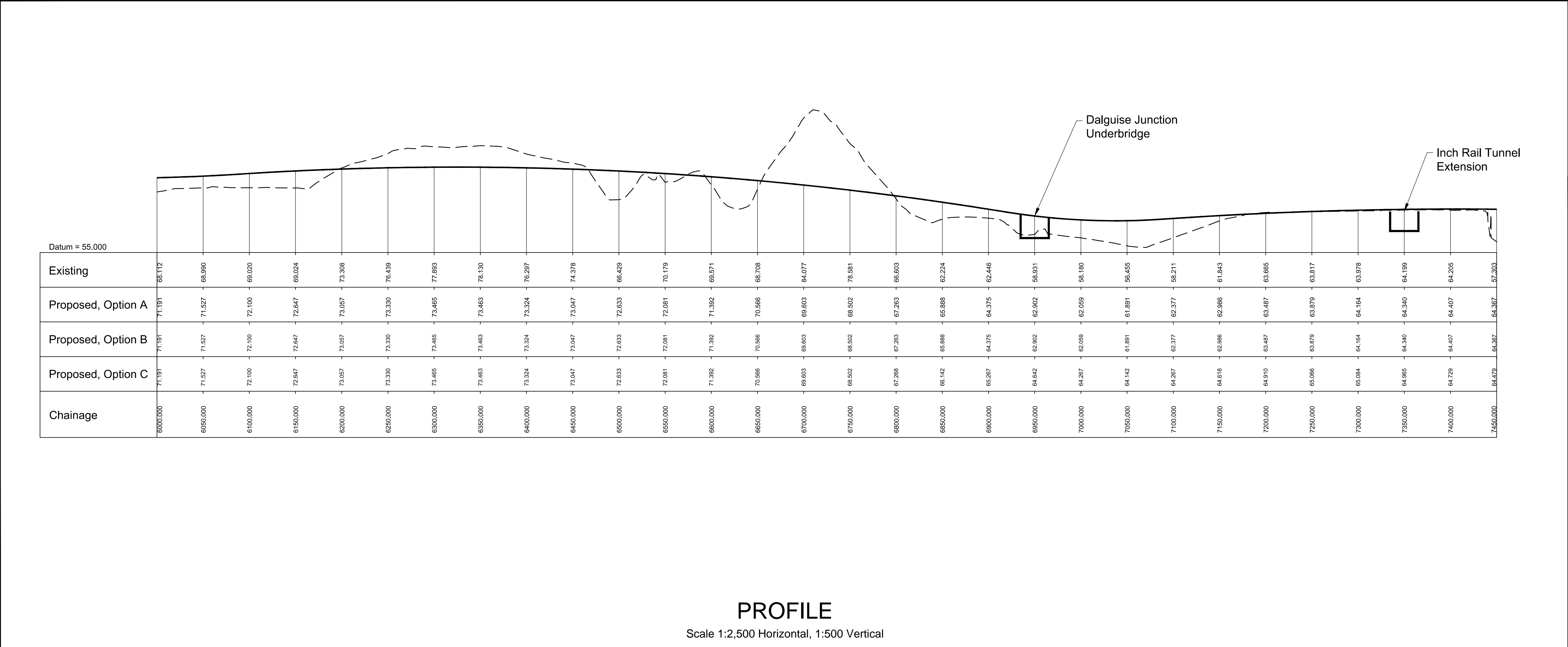
This drawing is not to be used in whole or part other than for the intended purpose and project as defined on this drawing. Refer to the contract for full terms and conditions.

File: P:\Data\B2140002 A9 Binnam to Tay Crossing\Sketches\B2140002-SK-088 Rev 0_Route Ops P&P Sh5of6.dwg Date: Jan 25, 2016 - 10:57am Plotted by: Findlat

Drawing number / Rev
B2140002/Sk/088 Rev 0



- Legend:
- Natural Earthwork Slope (1:2 or shallower)
 - Reinforced Earthwork Slope (Steeper than 1:2, shallower than 1:0.4)
 - Bridge Structure
 - Retaining Wall Structure
 - Highland Main Line Railway
- Profile Key:
- Existing Ground
 - Proposed, Option A
 - Proposed, Option B
 - Proposed, Option C
 - Proposed, Option A, B & C



0	19/01/16	For information	TF	CM:PF	AJB	KLPS
Rev	Rev. Date	Purpose of revision	Drawn	Checked	Reviewed	Approved

JACOBS
95 Botwell St, Glasgow, G2 7HX
Tel: +44(0)141 243 8000 Fax: +44(0)141 226 3109
www.jacobs.com

Client: **TRANSPORT SCOTLAND**
COMHDHAIL ALBA

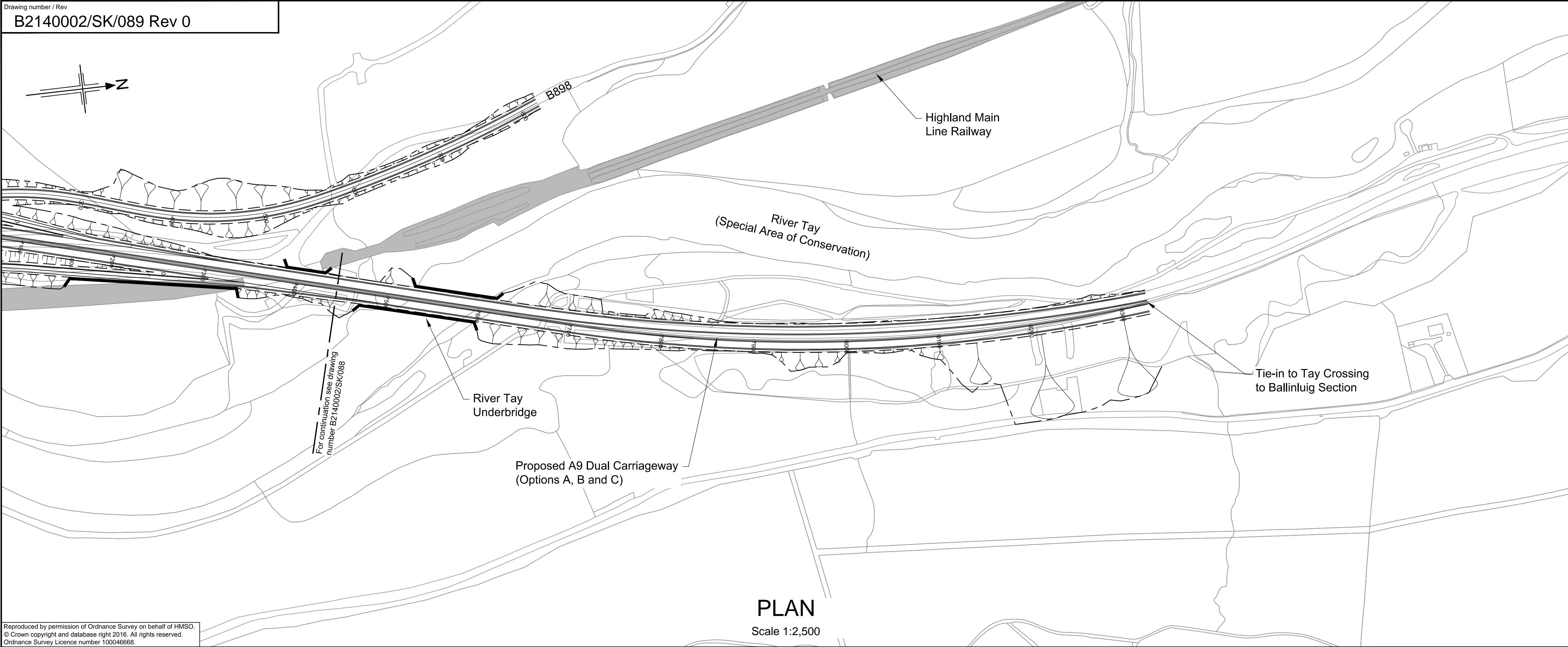
Project: **A9 DUALING**
PERTH TO INVERNESS
Pass of Birnam to Tay Crossing

Drawing title: **DMRB STAGE 2
PASS OF BIRNAM TO TAY CROSSING
ROUTE OPTIONS PLAN AND PROFILES
CH. 6000 - CH. 7450, SHEET 5 OF 6**

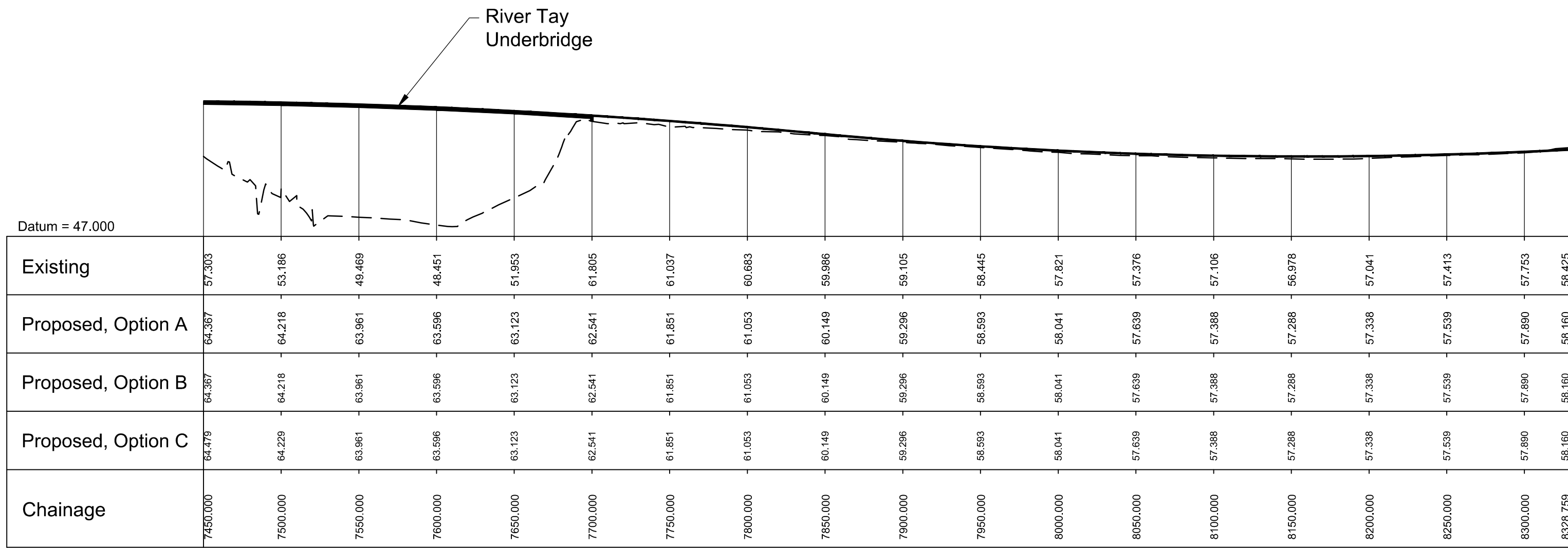
Drawing status: **FOR INFORMATION**

Scale	AS SHOWN @ A1	DO NOT SCALE
Jacobs No.	B2140002	
Drawing number	B2140002/S2/0110/088	Rev 0

This drawing is not to be used in whole or part other than for the intended purpose and project as defined on this drawing. Refer to the contract for full terms and conditions.



Reproduced by permission of Ordnance Survey on behalf of HMSO.
© Crown copyright and database right 2016. All rights reserved.
Ordnance Survey Licence number 100046668.



- Legend:
- Natural Earthwork Slope (1:2 or shallower)
 - Reinforced Earthwork Slope (Steeper than 1:2, shallower than 1:0.4)
 - Bridge Structure
 - Retaining Wall Structure
 - Highland Main Line Railway
- Profile Key:
- Existing Ground
 - Proposed, Option A
 - Proposed, Option B
 - Proposed, Option C
 - Proposed, Options A, B & C

0	19/01/16	For information	TF	CMcP	AJB	KLPS
Rev	Rev. Date	Purpose of revision	Drawn	Checked	Reviewed	Approved

JACOBS
95 Balmuir St, Glasgow, G2 7HX
Tel: +44(0)141 243 8000 Fax: +44(0)141 226 3109
www.jacobs.com



Drawing title

DMRB STAGE 2
PASS OF BIRNAM TO TAY CROSSING
ROUTE OPTION PLAN AND PROFILES
CH. 7450 - END, SHEET 6 OF 6

Drawing status		
FOR INFORMATION		
Scale	AS SHOWN @ A1	DO NOT SCALE
Jacobs No.	B2140002	
Drawing number	B2140002/SK/089	Rev 0

This drawing is not to be used in whole or part other than for the intended purpose and project as defined on this drawing. Refer to the contract for full terms and conditions.