

- Legend**
- Proposed Scheme (as per Draft Orders)
 - SUDS (Basin or Pond)*
 - 250m Study Area
 - Survey Locations
 - Timed Fish Survey
 - Quantitative Fish Survey
 - Macrophyte Survey Mid Point
 - Macroinvertebrate Survey Sample Point
 - River Habitat Survey (RHS)
 - Pond
 - Freshwater Aquatic Habitat Quality
 - High
 - Medium
 - Low
- * Actual shape of pond/basin will be subject to detailed design

Aquatic Habitat and Species Survey Results

Salmon	Trout	Lamprey	Eel	Surface Water Feature No.

Pond Number	Habitat Quality Rating	Species of Conservation Interest

Fish species are coloured if present during 2015 surveys

* HMS = Habitat Modification Score
 WFD = Water Framework Directive
 CCI = Community Conservation Index

** see Appendix A11.2 (Methods and Baseline) for description of the rating

n/a = not applicable
 n/c = none collected

Rev.	Rev. Date	Purpose of revision	Orig/Dwn	Checkd	Rev'd	Apprv'd
0	NOV 2016	ES Publication	HM	JF	PG	ENG

JACOBS
 95 Bothwell Street, Glasgow, G2 7HX, UK.
 Tel: +44(0)141 204 2511 Fax: +44(0)141 226 3109
 www.jacobs.com

Client
TRANSPORT SCOTLAND
 COMHDAIL ALBA

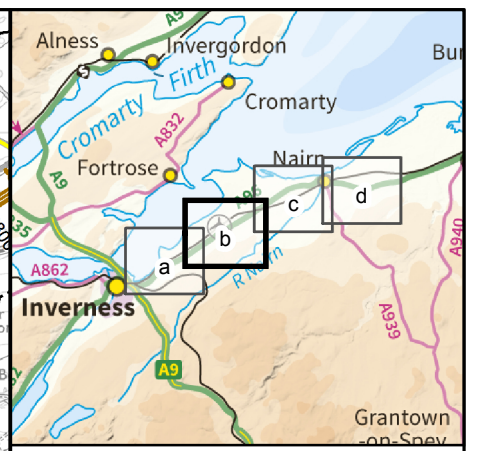
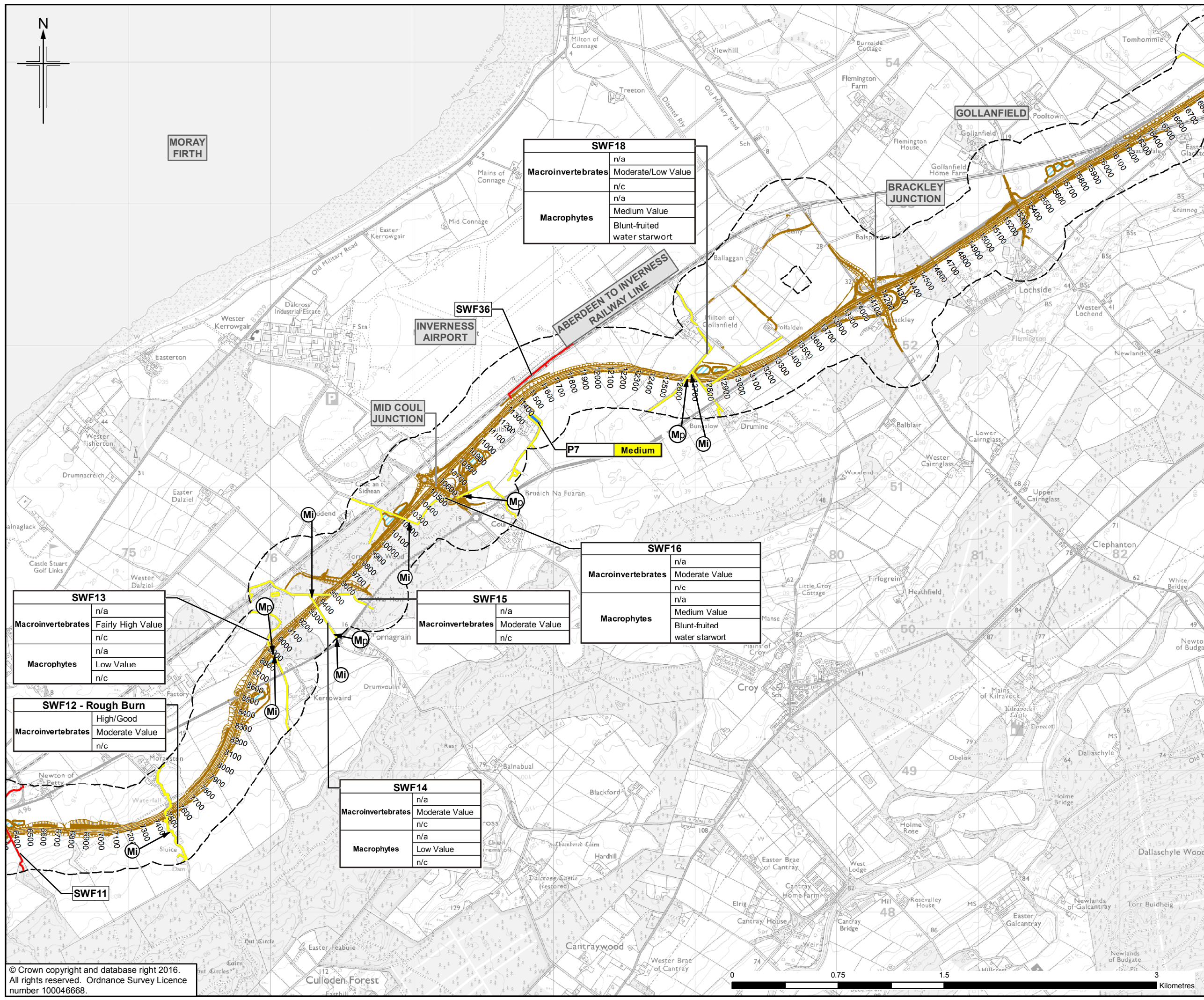
Project
A96 DUALLING
 INVERNESS TO NAIRN
 (incl. Nairn Bypass)

Drawing title
Figure 11.10a
Environmental Statement
Aquatic Surveys

Sheet 1 of 4

Drawing Status	FINAL		
Scale	1:25,000	@ A3	DO NOT SCALE
Jacobs No.	B2103500		
BIM No.			
Drawing number	B2103500/EN/EIA/DR/1110a		
Rev	0		

This drawing is not to be used in whole or part other than for the intended purpose and project as defined on this drawing. Refer to the contract for full terms and conditions.



SWF18	
Macroinvertebrates	n/a
	Moderate/Low Value
	n/c
Macrophytes	n/a
	Medium Value
	Blunt-fruited water starwort

SWF36	
Macroinvertebrates	n/a
	Moderate Value
	n/c
Macrophytes	n/a
	Medium Value
	Blunt-fruited water starwort

SWF16	
Macroinvertebrates	n/a
	Moderate Value
	n/c
Macrophytes	n/a
	Medium Value
	Blunt-fruited water starwort

SWF15	
Macroinvertebrates	n/a
	Moderate Value
	n/c
Macrophytes	n/a
	Medium Value
	Blunt-fruited water starwort

SWF14	
Macroinvertebrates	n/a
	Moderate Value
	n/c
Macrophytes	n/a
	Low Value
	n/c

SWF13	
Macroinvertebrates	n/a
	Fairly High Value
	n/c
Macrophytes	n/a
	Low Value
	n/c

SWF12 - Rough Burn	
Macroinvertebrates	High/Good
	Moderate Value
	n/c
Macrophytes	n/a
	Low Value
	n/c

- Legend**
- Proposed Scheme (as per Draft Orders)
 - SUDS (Basin or Pond)*
 - 250m Study Area
 - Survey Locations
 - Timed Fish Survey
 - Quantitative Fish Survey
 - Macrophyte Survey Mid Point
 - Macroinvertebrate Survey Sample Point
 - River Habitat Survey (RHS)
 - Pond
- Freshwater Aquatic Habitat Quality**
- High
 - Medium
 - Low
- * Actual shape of pond/basin will be subject to detailed design

Aquatic Habitat and Species Survey Results

Salmon	Trout	Lamprey	Eel	Surface Water Feature No.
River Habitat Survey	HMS Score - Description*			
Macroinvertebrates	WFD Site classification Aug/Oct**			
	CCI Site classification Value Aug/Oct*			
	Species (CCI Conservation Score)			
Macrophytes	WFD Site classification**			
	Ecological Value Rating**			
	Scottish Biodiversity List Species			

Pond Number	Habitat Quality Rating	Species of Conservation Interest
P7	Medium	

Fish species are coloured if present during 2015 surveys

* HMS = Habitat Modification Score
WFD = Water Framework Directive
CCI = Community Conservation Index

** see Appendix A11.2 (Methods and Baseline) for description of the rating

n/a = not applicable
n/c = none collected

Rev.	Rev. Date	Purpose of revision	Orig/Dwn	Checkd	Rev'd	Apprv'd
0	NOV 2016	ES Publication	HM	JF	PG	ENG

JACOBS
95 Bothwell Street, Glasgow, G2 7HX, UK.
Tel: +44(0)141 204 2511 Fax: +44(0)141 226 3109
www.jacobs.com

Client: **TRANSPORT SCOTLAND**
COMHDAIL ALBA

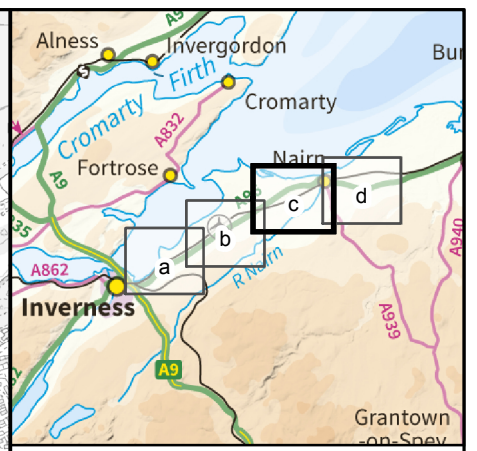
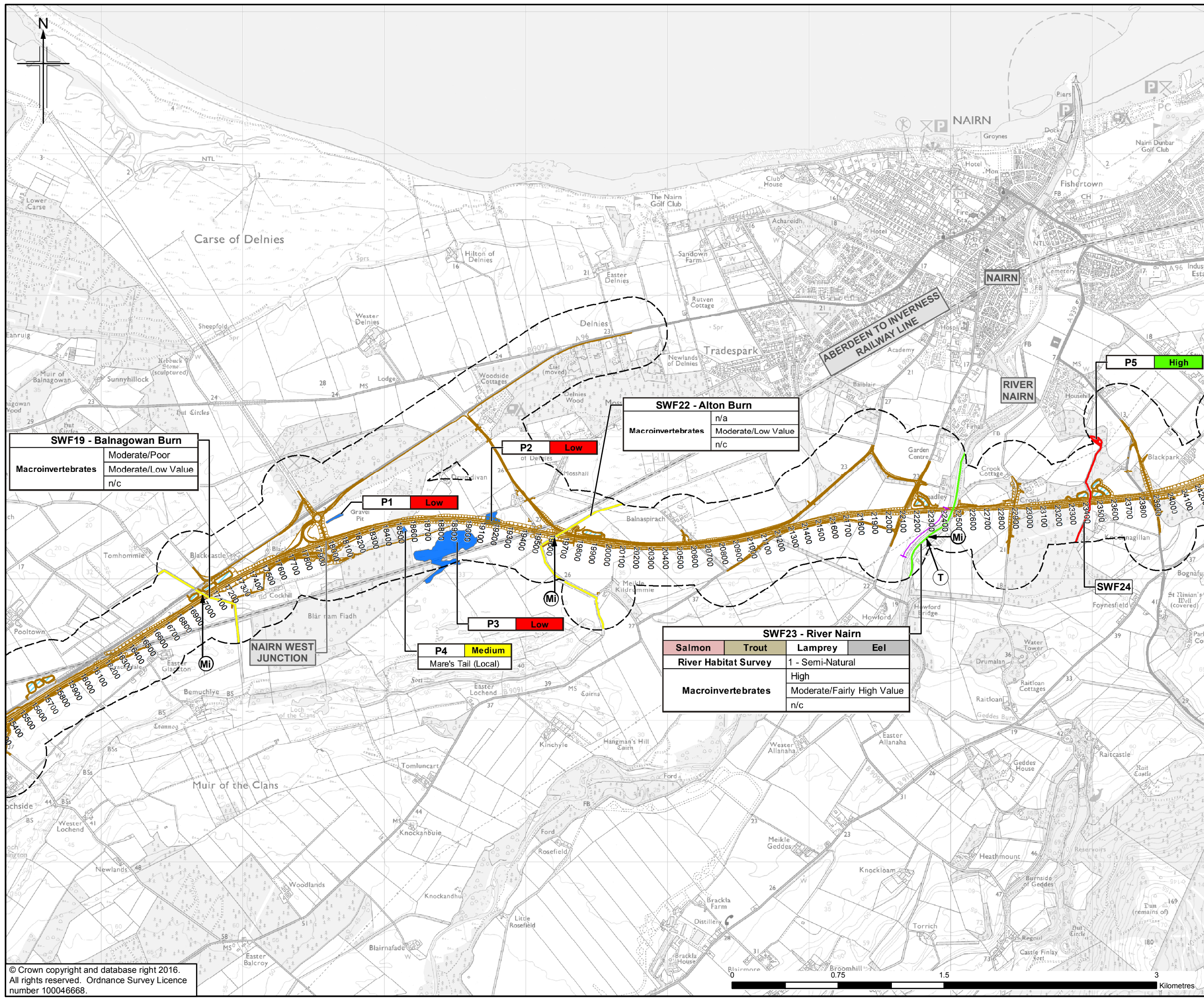
Project: **A96 DUALLING**
INVERNESS TO NAIRN
(incl. Nairn Bypass)

Drawing title: **Figure 11.10b Environmental Statement Aquatic Surveys**

Sheet 2 of 4

Drawing Status	FINAL		
Scale	1:25,000 @ A3	DO NOT SCALE	
Jacobs No.	B2103500		
BIM No.			
Drawing number	B2103500/EN/EIA/DR/1110b	Rev	0

This drawing is not to be used in whole or part other than for the intended purpose and project as defined on this drawing. Refer to the contract for full terms and conditions.



- Legend**
- Proposed Scheme (as per Draft Orders)
 - SUDS (Basin or Pond)*
 - 250m Study Area
- Survey Locations**
- Timed Fish Survey
 - Quantitative Fish Survey
 - Macrophyte Survey Mid Point
 - Macroinvertebrate Survey Sample Point
 - River Habitat Survey (RHS)
 - Pond
- Freshwater Aquatic Habitat Quality**
- High
 - Medium
 - Low
- * Actual shape of pond/basin will be subject to detailed design

Aquatic Habitat and Species Survey Results

Salmon	Trout	Lamprey	Eel	Surface Water Feature No.
River Habitat Survey				HMS Score - Description*
Macrophyte Survey				WFD Site classification Aug/Oct**
Macrophytes				CCI Site classification Value Aug/Oct
				Species (CCI Conservation Score)
				WFD Site classification**
				Ecological Value Rating**
				Scottish Biodiversity List Species

Pond Number	Habitat Quality Rating	Species of Conservation Interest

Fish species are coloured if present during 2015 surveys

* HMS = Habitat Modification Score
 WFD = Water Framework Directive
 CCI = Community Conservation Index

** see Appendix A11.2 (Methods and Baseline) for description of the rating

n/a = not applicable
 n/c = none collected

Rev.	Rev. Date	Purpose of revision	HM	JF	PG	ENG
0	NOV 2016	ES Publication				

JACOBS
 95 Bothwell Street, Glasgow, G2 7HX, UK.
 Tel: +44(0)141 226 2511 Fax: +44(0)141 226 3109
 www.jacobs.com

Client
TRANSPORT SCOTLAND
 COMHDAIL ALBA

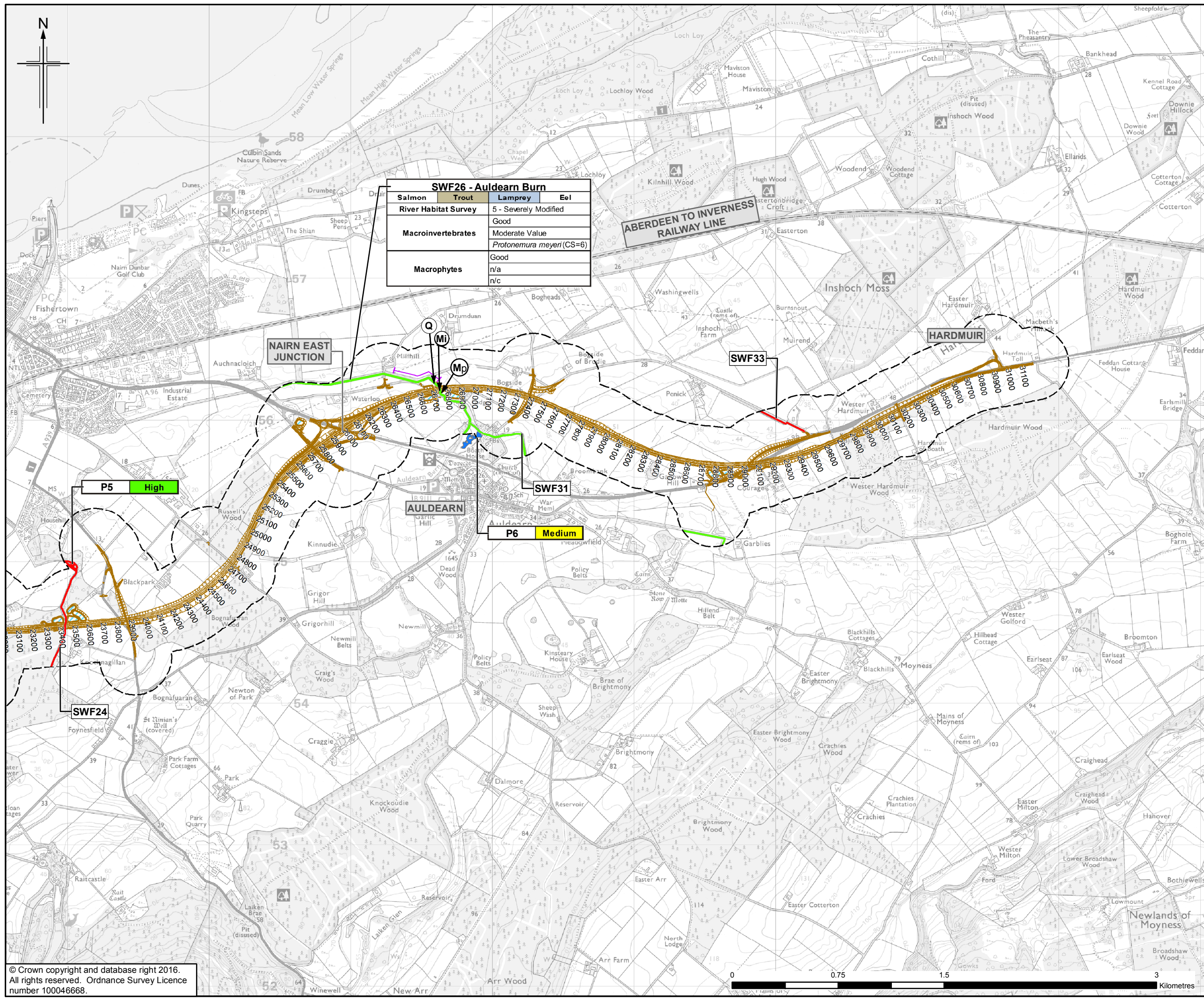
Project
A95 DUALLING
 INVERNESS TO NAIRN
 (incl. Nairn Bypass)

Drawing title
Figure 11.10c
Environmental Statement
Aquatic Surveys

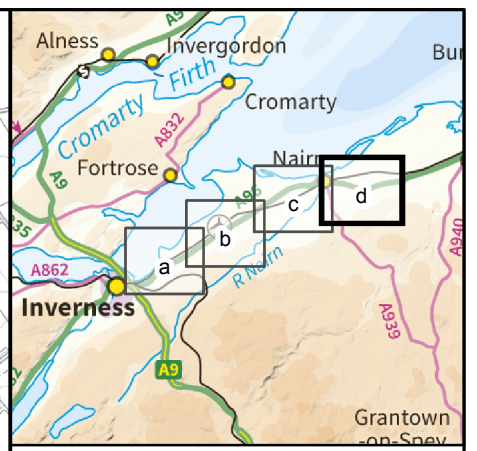
Sheet 3 of 4

Drawing Status	FINAL		
Scale	1:25,000	@ A3	DO NOT SCALE
Jacobs No.	B2103500		
BIM No.			
Drawing number	B2103500/EN/EIA/DR/1110c		
Rev	0		

This drawing is not to be used in whole or part other than for the intended purpose and project as defined on this drawing. Refer to the contract for full terms and conditions.



SWF26 - Auldearn Burn			
Salmon	Trout	Lamprey	Eel
River Habitat Survey			
5 - Severely Modified			
Macroinvertebrates			
Good			
Moderate Value			
<i>Protonemura meyeri</i> (CS=6)			
Macrophytes			
Good			
n/a			
n/c			



- Legend**
- Proposed Scheme (as per Draft Orders)
 - SUDS (Basin or Pond)*
 - 250m Study Area
 - Survey Locations
 - Timed Fish Survey
 - Quantitative Fish Survey
 - Macrophyte Survey Mid Point
 - Macroinvertebrate Survey Sample Point
 - River Habitat Survey (RHS)
 - Pond
 - Freshwater Aquatic Habitat Quality
 - High
 - Medium
 - Low
- * Actual shape of pond/basin will be subject to detailed design

Aquatic Habitat and Species Survey Results

Salmon	Trout	Lamprey	Eel	Surface Water Feature No.
River Habitat Survey				
HMS Score - Description*				
WFD Site classification Aug/Oct**				
CCI Site classification Value Aug/Oct				
Species (CCI Conservation Score)				
WFD Site classification**				
Ecological Value Rating**				
Scottish Biodiversity List Species				

Pond Number	Habitat Quality Rating	Species of Conservation Interest

Fish species are coloured if present during 2015 surveys

* HMS = Habitat Modification Score
 WFD = Water Framework Directive
 CCI = Community Conservation Index

** see Appendix A11.2 (Methods and Baseline) for description of the rating

n/a = not applicable
 n/c = none collected

Rev.	Rev. Date	Purpose of revision	Orig/Dwn	Checkd	Rev'd	Apprv'd
0	NOV 2016	ES Publication	HM	JF	PG	ENG



Figure 11.10d
Environmental Statement
Aquatic Surveys

Sheet 4 of 4

Drawing Status	FINAL	
Scale	1:25,000 @ A3	DO NOT SCALE
Jacobs No.	B2103500	
BIM No.		
Drawing number	B2103500/EN/EIA/DR/1110d	Rev 0

This drawing is not to be used in whole or part other than for the intended purpose and project as defined on this drawing. Refer to the contract for full terms and conditions.