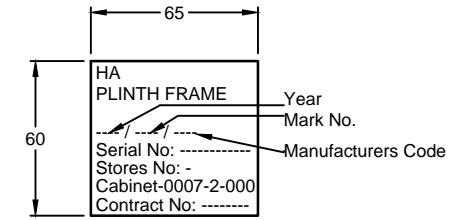


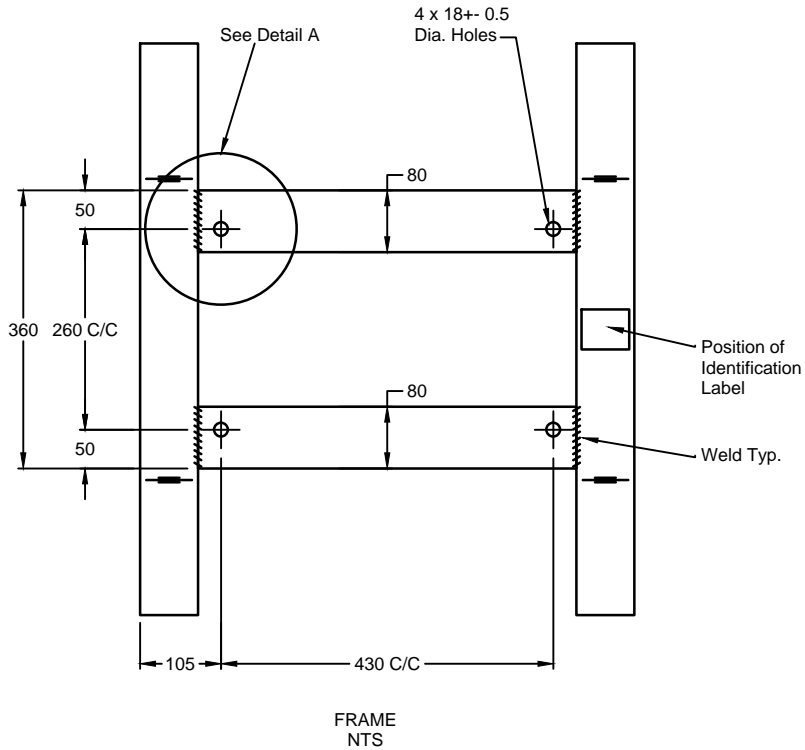
Material to be mild steel
Finish to be hot dipped galvanised
to HA specification TR 2180

NOTES

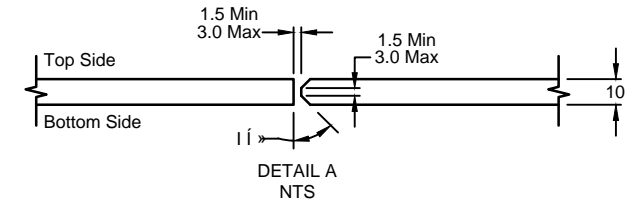
1. Material to be white self adhesive vinyl sheet printed with 16pt helvetica medium or similar black lettering to BS 4781.
2. Label details to comply with HA specification TR 1100.



IDENTIFICATION LABEL
SCALE 1:1



FRAME
NTS



WELD PREPARATION PROCEDURE

1. Tack bottom side.
2. Weld top side.
3. Clean root of bottom side and complete a continuous weld.
4. Grind flush top side.



Note:
The NDX series of drawings represents non site specific installations of standard equipment and site layouts.

This drawing was generated on computer and must not be manually updated

TITLE
TYPICAL TYPE 610 FRAME FOR SCOTTISH TYPE 600(S) CABINET

ORIGINAL DRAWING SIZE: 297 x 420
ALL DIMENSIONS ARE IN MM
TOLERANCE +- 1 UNLESS OTHERWISE STATED
THIRD ANGLE PROJECTION DO NOT SCALE

1	FIRST ISSUE	BD 13/08/10
ISSUE	AMENDMENTS	APPD/DATE
DRN	C.S.G.	CHKD B.D.
DATE	10.08.10	DATE 13.08.10
DRG. NO.	NDX1002-08dt	
SHT. NO.	3 of 4	