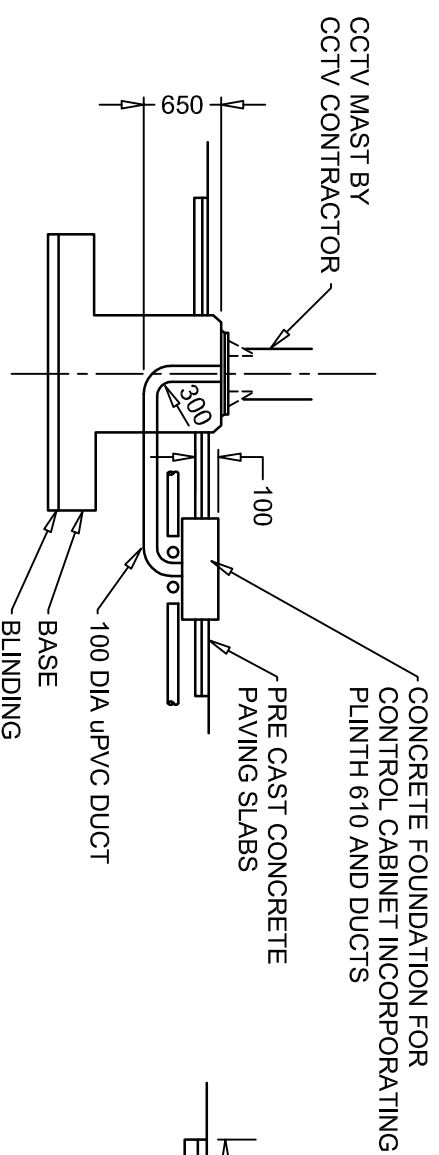
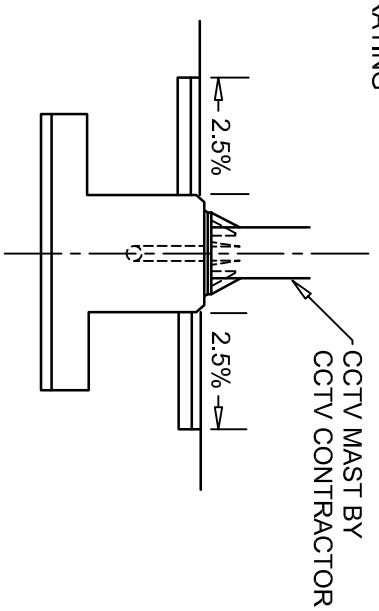


PLAN ON BASE

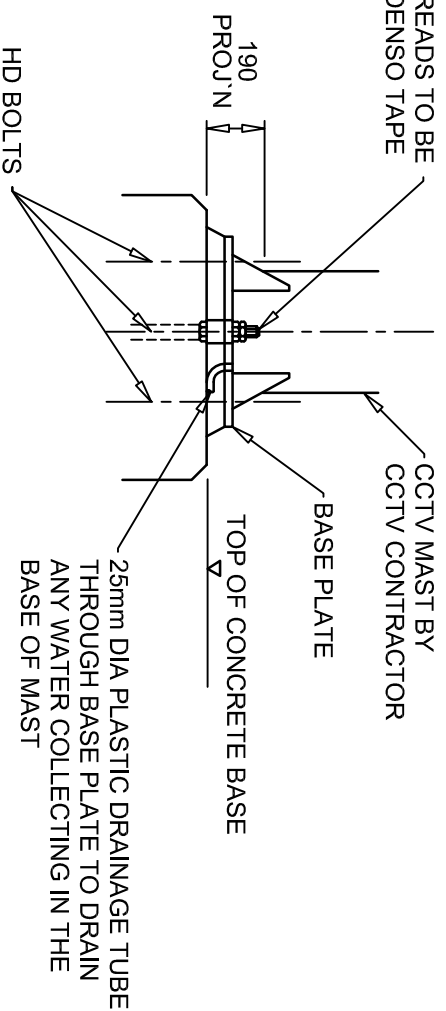


SECTION ON A - A



SECTION ON B - B

EXPOSED BOLT THREADS TO BE PROTECTED WITH DENSO TAPE OR EQUIVALENT



MAST MOUNTING DETAIL

**NOTES**

1. Ducts are to be provided with draw ropes, ends sealed and markers installed.
2. Paving slabs to be cambered at 2.5% as shown in section B - B
3. Concrete : as specified.
4. All finished soil surfaces beyond the bases where cut or fill operations have been carried out shall receive a layer of soil 100mm thick.
5. Base to be positioned on site so that mast is installed, door in mast is away from traffic.
6. Reinforcement : as required for base approval.
7. A template, appropriate to the mast, should be provided to ensure correct alignment of the bolt group.



Note:  
The NDX series of drawings represents non site specific installations of standard equipment and site layouts.

This drawing was generated on computer and must not be manually updated

TITLE

TYPICAL 10 & 15 METRE CCTV MAST, CABINET BASE & PAVED AREA

ORIGINAL DRAWING SIZE: 297 x 420  
ALL DIMENSIONS ARE IN MM  
TOLERANCE +- 1 UNLESS OTHERWISE STATED  
THIRD ANGLE PROJECTION DO NOT SCALE

B	REDRAWN	BD 13/10/09		
A	FOR INFORMATION	GC 18/12/06		
1	FIRST ISSUE	BD 14/02/02		
ISSUE	AMENDMENTS	APPD/DATE		
DRN	C.S.G.	CHKD	B.D.	SCALE
DATE	05.02.02	DATE	09.02.02	N.T.S.
DRG. NO.	NDX1010-00cl	SHT. NO.	4	of 4