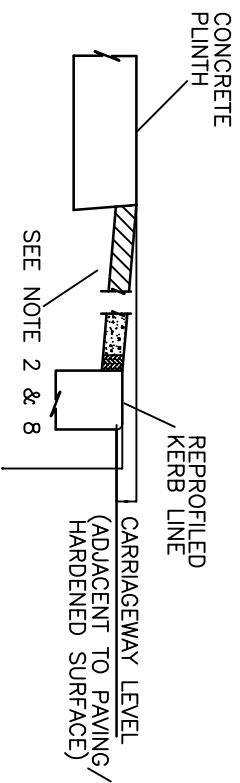
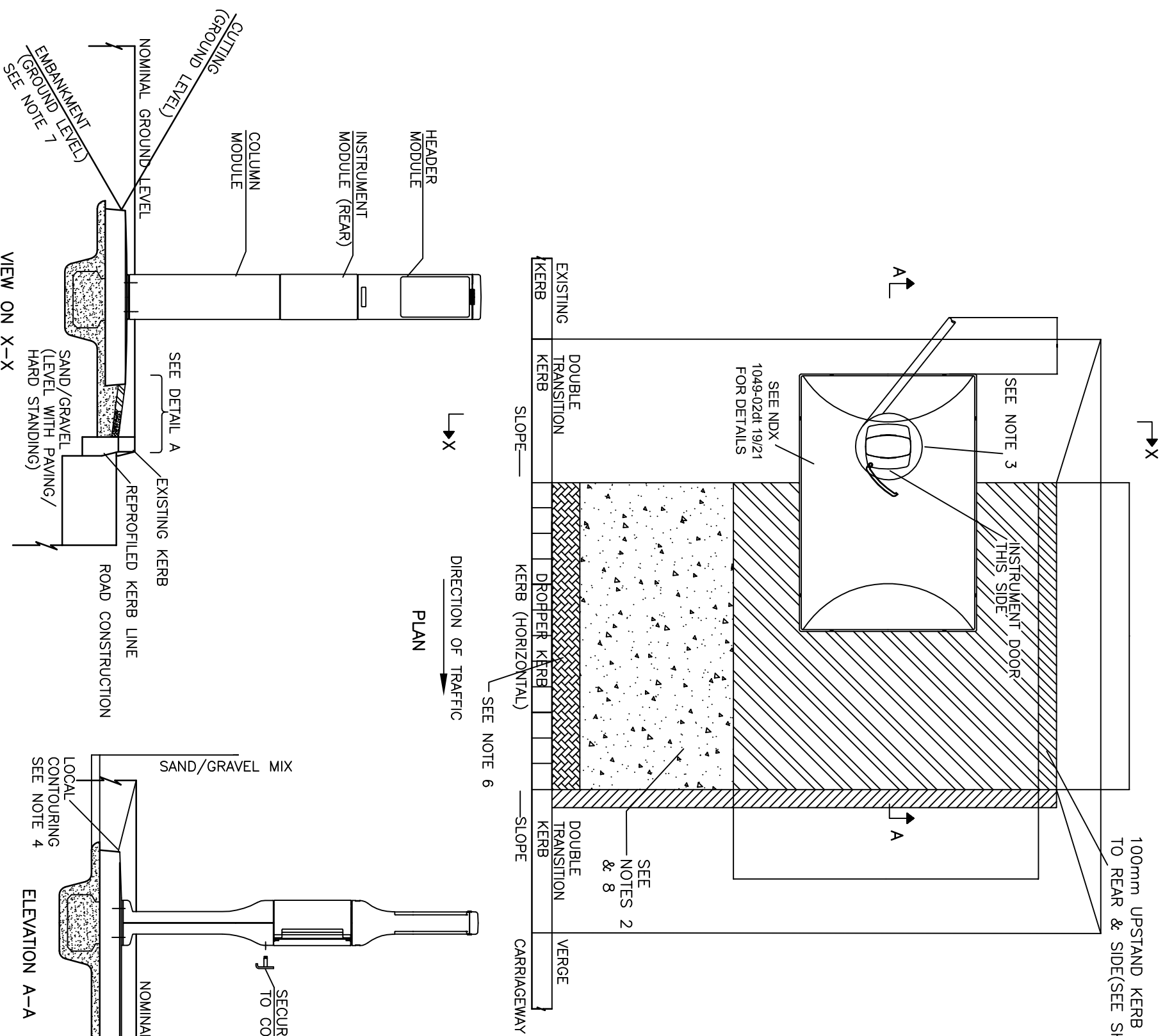


NOTES

1. SEE GENERAL INSTALLATION NOTES ON DRAWING NDX1049-02no\_01.
2. AT KERBED SITES, THE TOP OF THE RAMP SHALL BE LEVEL WITH THE ADJACENT PLINTH EDGE, WHICH SHALL BE AT A MINIMUM HEIGHT OF 40mm ABOVE CARRIAGEWAY LEVEL. WHERE POSSIBLE, THE ACCESS RAMP UP TO THE PLINTH SHALL HAVE A GRADIENT OF NO GREATER THAN 8% AND NO LESS THAN 2%. THERE SHALL BE AN UPSTAND OF 12mm BETWEEN THE CARRIAGEWAY AND THE BOTTOM OF THE RAMP.(ENSURING ADEQUATE DRAINAGE FACILITIES AVAILABLE TO AVOID PONDING)
3. SEE NOTE 3 ON DRAWING NDX1049-02ga\_02
4. LOCAL CONTOURING TO BE PROFILED DOWNWARDS TO A LEVEL 12mm BELOW THE EDGES OF CONCRETE PLINTH.
5. DUCT TO EXTEND MINIMUM OF 200mm BEYOND EDGE OF PLINTH (FOR SITES WITHOUT EXISTING DUCTS).
6. DOUBLE KERB WITH TACTILE BLISTER PAVING (TONAL CONTRAST EXCLUDING RED)
7. WHEN INSTALLED ON AN EMBANKMENT, A HANDRAIL MAY BE REQUIRED (SEE NDX 1049-02dt\_13). ADVICE AS TO WHETHER HANDRAIL IS REQUIRED SHALL BE SOUGHT FROM THE OVERSEEING ORGANISATION.  
  
DISTANCE FROM THE CARRIAGEWAY TO BE AS PER CENTRE OF EXISTING POST IN THE CASE OF EXISTING INSTALLATIONS (SUBJECT TO MINIMUM DIMENSION AVAILABLE FOR RAMP ENSURING GRADIENT IS NO GREATER THAN 8%) AND FOR NEW INSTALLATION SITES SHALL TAKE ACCOUNT OF SITE FACTORS INCLUDING (AS APPLICABLE)  
 - AVAILABLE CABLE LENGTH  
 - WIDTH OF VERGE  
 - MINIMISING NEED FOR REPROFILING  
 - AVOIDING NEED FOR RETAINING WALL  
 - ENSURING RAMP GRADIENT IS NO GREATER THAN 8%



DETAIL A



[Hatched pattern]	100mm UPSTAND KERB
[Diagonal lines]	LEVELLED HARD STANDING
[Dotted pattern]	RAMP SURFACE(GRADIENT 2-8%)
[Blister pattern]	TACTILE BLISTER PAVING(IF APPLICABLE)



Note:  
The NDX series of drawings represents non site specific installations of standard equipment and site layouts.

TITLE  
This drawing was generated on computer and must not be manually updated  
TYPICAL ERT 354 VERGE, NO SAFETY FENCE, WITH KERB - TYPE B, O

ORIGINAL DRAWING SIZE: 297 x 420	DRN	A.N.O.	CHKD	A.W.	DATE	DATE	DRG. NO.	NDX1049-02ga	SHT. NO.	3 of 18
ALL DIMENSIONS ARE IN MM	ISSUE		AMENDMENTS		APPD/DATE					
TOLERANCE +/- 1 UNLESS OTHERWISE STATED	C	UPDATED SEE REV. SHT.							BD 30/1/09	
THIRD ANGLE PROJECTION DO NOT SCALE	B	REDRAWN							BD 13/10/09	
	A	INITIAL ISSUE								