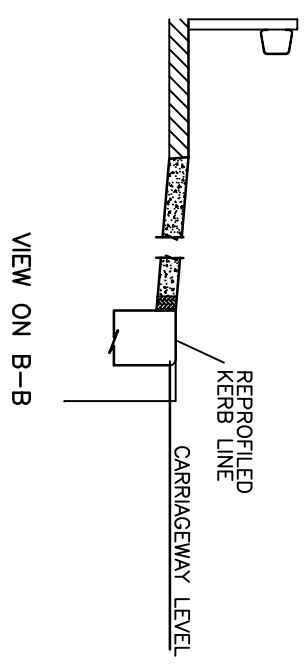
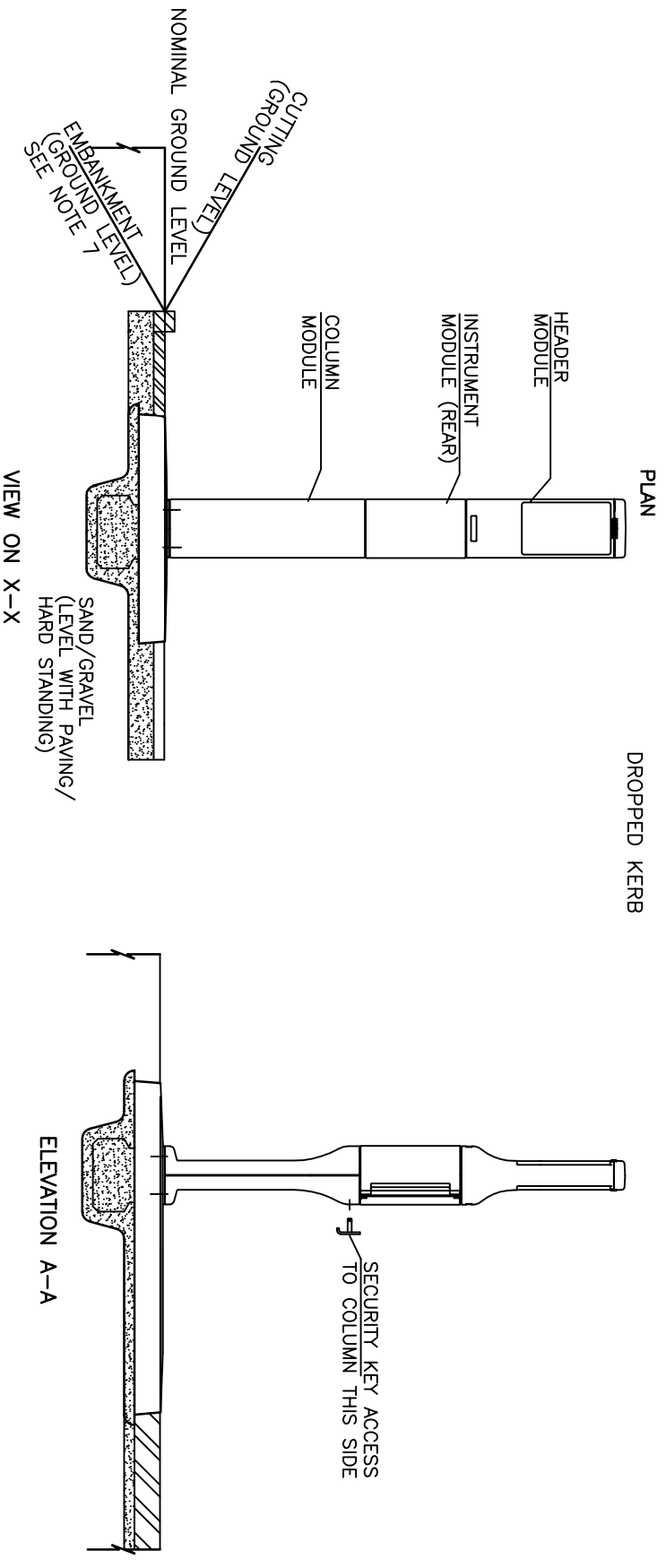


- NOTES
1. SEE GENERAL INSTALLATION NOTES ON DRAWING NDX1049-02no_01
 2. AT KERB SITES THE ACCESS RAMP UP TO THE PLINTH SHALL HAVE A GRADIENT OF NO GREATER THAN 5%

3. ROTATE CABLE PIT MouldING TO ALIGN WITH INCOMING DUCT FOR RETRO-FIT INSTALLATION REUSING THE EXISTING CABLE, ANY SPARE CABLE SHALL BE RETAINED IN THE CABLE PIT MouldING, FOR NEW INSTALLATIONS, OR OTHERWISE WHERE NEW CABLE IS BEING INSTALLED, A MINIMUM 500M LENGTH RE-MAKE LOOP SHALL BE RETAINED IN THE CABLE PIT MouldING, FOR FURTHER CABLING DETAILS SEE NDX1049-02no_01 NOTE 18, THE CABLE PIT MouldING AND ASSOCIATE DUST IS NOT USED AT GSM VARIANT SITES.
4. WHEN INSTALLED ON AN EMBANKMENT, A HANDRAIL MAY BE REQUIRED (SEE DRAWING NDX1070-02ga_13, ADVISE AS TO WHETHER A HANDRAIL IS REQUIRED SHALL BE SOUGHT FROM THE OVERSEEING ORGANISATION).
5. CHANGES OF HORIZONTAL ALIGNMENT TO TAKE PLACE OVER TAPER LENGTH, LENGTH OF TAPER TO SUIT RATE OF CHANGE IN SET BACK, RATE OF CHANGE OF SET-BACK NOT TO EXCEED 1 IN 16 FOR DEFORMABLE SAFETY BARRIERS OR 1 IN 20 RIGID SAFETY BARRIERS. FOR CHANGE IN SETBACK LESS THAN 300MM, LENGTH OF TAPER TO BE 32 TIMES THE DIFFERENCE IN THE SET BACK WITH START AND END TRANSITION CURVES.



Note:
The NDX series of drawings represents non site specific installations of standard equipment and site layouts.

TITLE
This drawing was generated on computer and must not be manually updated
TYPICAL ERT 354 ACCOMMODATING ERT AT VERGE WITH SAFETY BARRIER - TYPE L

ORIGINAL DRAWING SIZE: 297 x 420
ALL DIMENSIONS ARE IN MM
TOLERANCE +/- 1 UNLESS OTHERWISE STATED
THIRD ANGLE PROJECTION DO NOT SCALE

C	UPDATED SEE REV. SHT.	BD 30/1/09
B	REDRAWN	BD 13/10/09
A	INITIAL ISSUE	-
ISSUE	AMENDMENTS	APPD/DATE
DRN	A.N.O.	CHKD
DATE	---	A.W.
DRG. NO.	NDX1049-02ga	SCALE
		N.T.S.
		SHT. NO.
		8 of 18