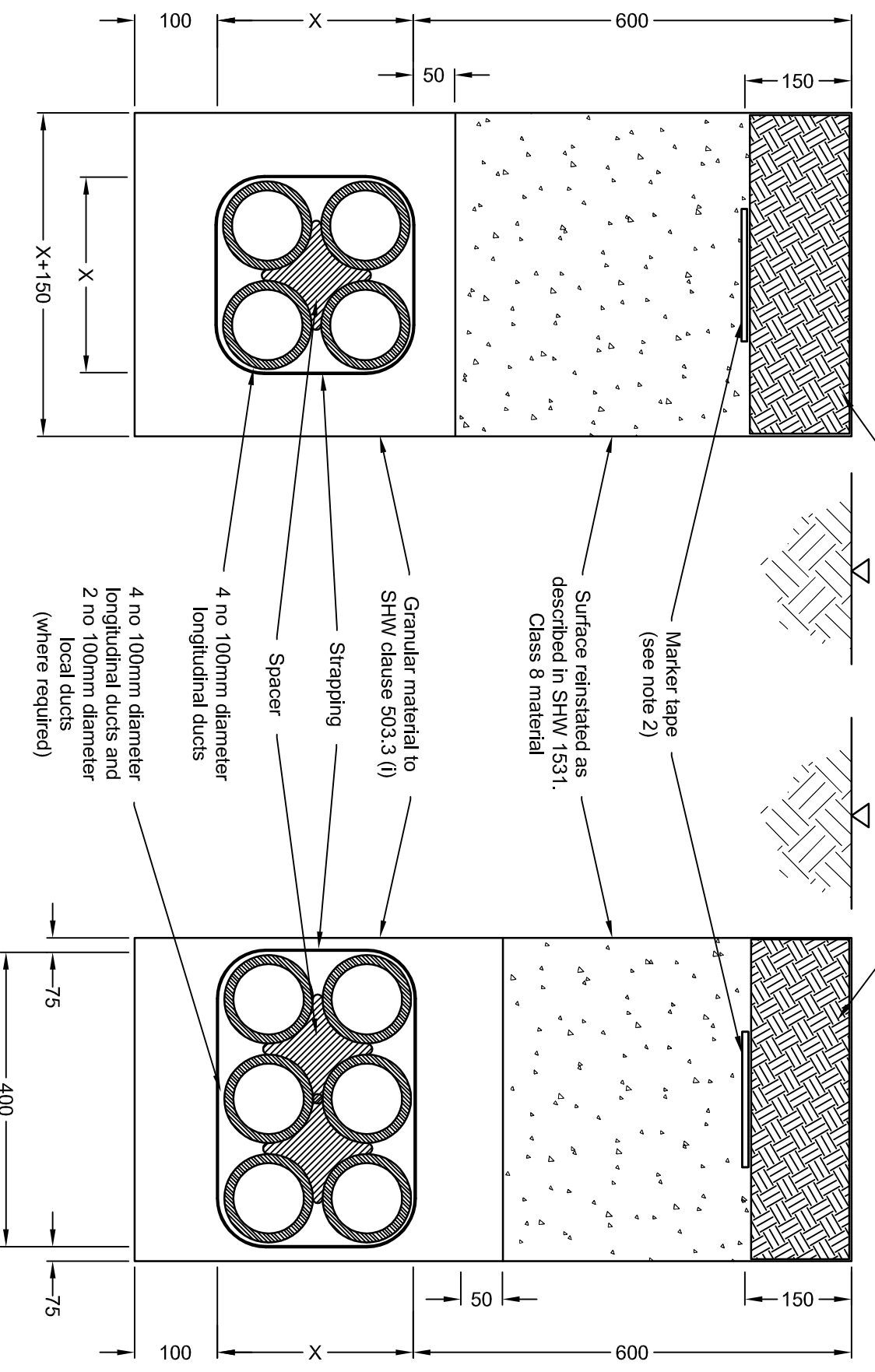


- NOTES**
1. Dimension X = 260mm and is the external dimensions of the ducts and spacer when strapped together as shown on drawing sheet 6.
  2. Cable marker tape in accordance with SHW Clause 1511 shall be installed as shown.
  3. For details of strapping and spacer refer to drawing sheet 6.
  4. Trenches shall be backfilled in accordance with SHW Clause 1531.
  5. Refer to sheet 5 for details of ducts installed beneath carriageways.



LONGITUDINAL DUCTS ONLY

LONGITUDINAL AND LOCAL DUCTS

Note:  
The NDX series of drawings represents non site specific installations of standard equipment and site layouts.

TITLE  
This drawing was generated on computer and must not be manually updated  
**TYPICAL DUCT INSTALLATION - LONGITUDINAL**

ORIGINAL DRAWING SIZE: 297 x 420  
ALL DIMENSIONS ARE IN MM  
TOLERANCE +- 1 UNLESS OTHERWISE STATED  
THIRD ANGLE PROJECTION DO NOT SCALE

B	SEE REVISION SHEET	GC 06/11/07
D	UPDATED SEE REV. SHT.	BD 30/11/09
C	REDRAWN	BD 13/10/09
ISSUE	AMENDMENTS	APPD/DATE
DRN	C.S.G.	CHKD
DATE	25.09.01	DATE
DRG. NO.	NDX1063-00d1	SHT. NO.
		3 of 10