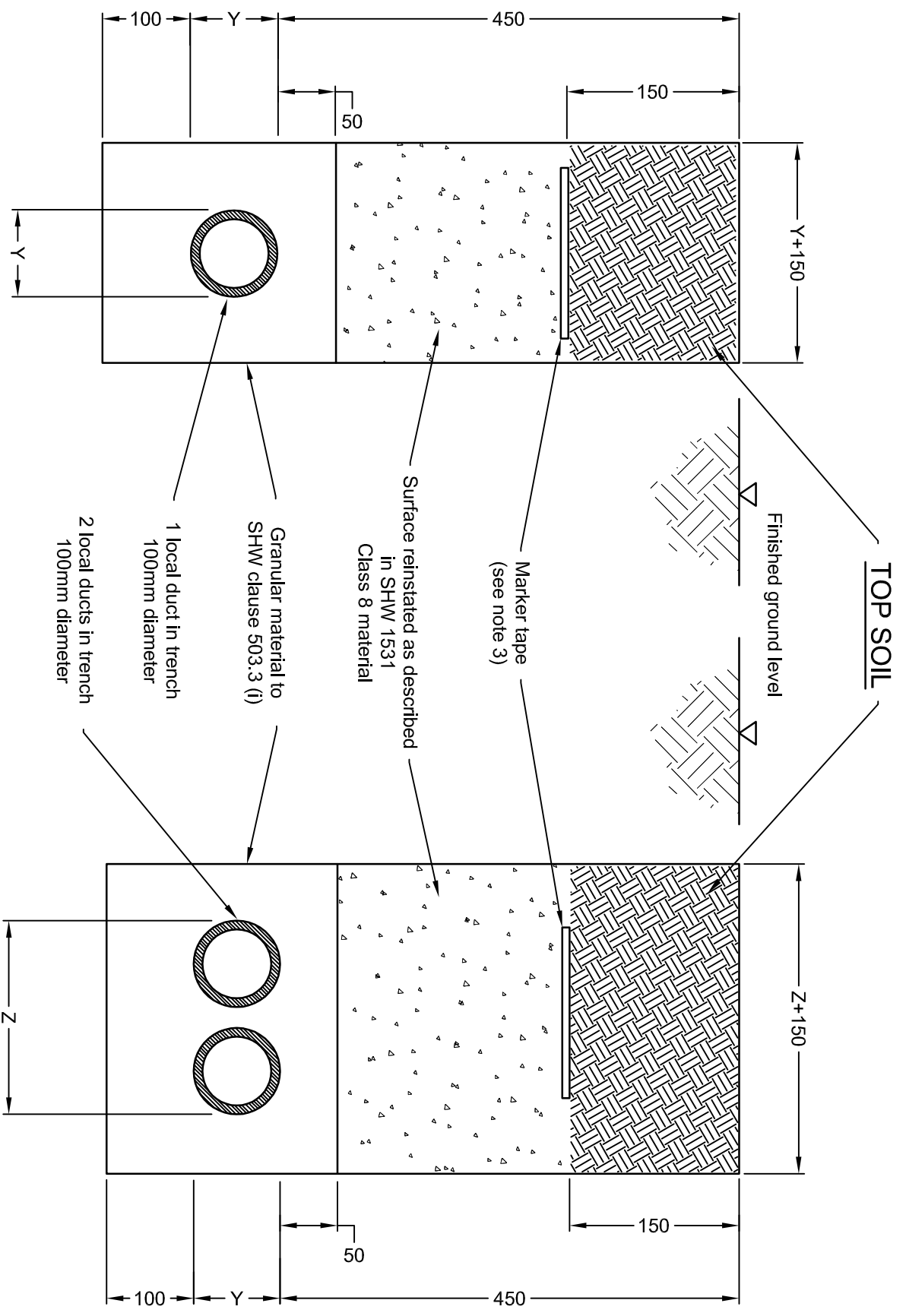


Note:
The NDX series of drawings represents non site specific installations of standard equipment and site layouts.



NOTES

1. Dimension Y is the external dimension of 1 duct.
2. Dimension Z is the external dimension of 2 ducts laid with a 20mm separation.
3. Cable marker tape in accordance with SHW clause 1511 shall be installed as shown.
4. Refer to sheet 5 for details of local ducts installed beneath carriageways.
5. Trenches shall be back filled in accordance with Scottish Series 1500 clause 1531.

This drawing was generated on computer and must not be manually updated

TYPICAL DUCT INSTALLATION - LOCAL DUCTS

TITLE	TYPICAL DUCT INSTALLATION - LOCAL DUCTS		
ORIGINAL DRAWING SIZE: 297 x 420			
ALL DIMENSIONS ARE IN MM			
TOLERANCE +/- 1 UNLESS OTHERWISE STATED			
THIRD ANGLE PROJECTION	DO NOT SCALE		

ISSUE	AMENDMENTS	APPD/DATE
B	REDRAWN	BD 13/10/09
A	FOR INFORMATION	BD 09/02/03
C	UPDATED SEE REV. SHT.	BD 30/1/09
DRN	C.S.G.	CHKD
DATE	25.09.01	B.D.
		DATE
		25.09.01
DRG. NO.	NDX1063-00dt	SHT. NO.
		4 of 10
		SCALE
		N.T.S.