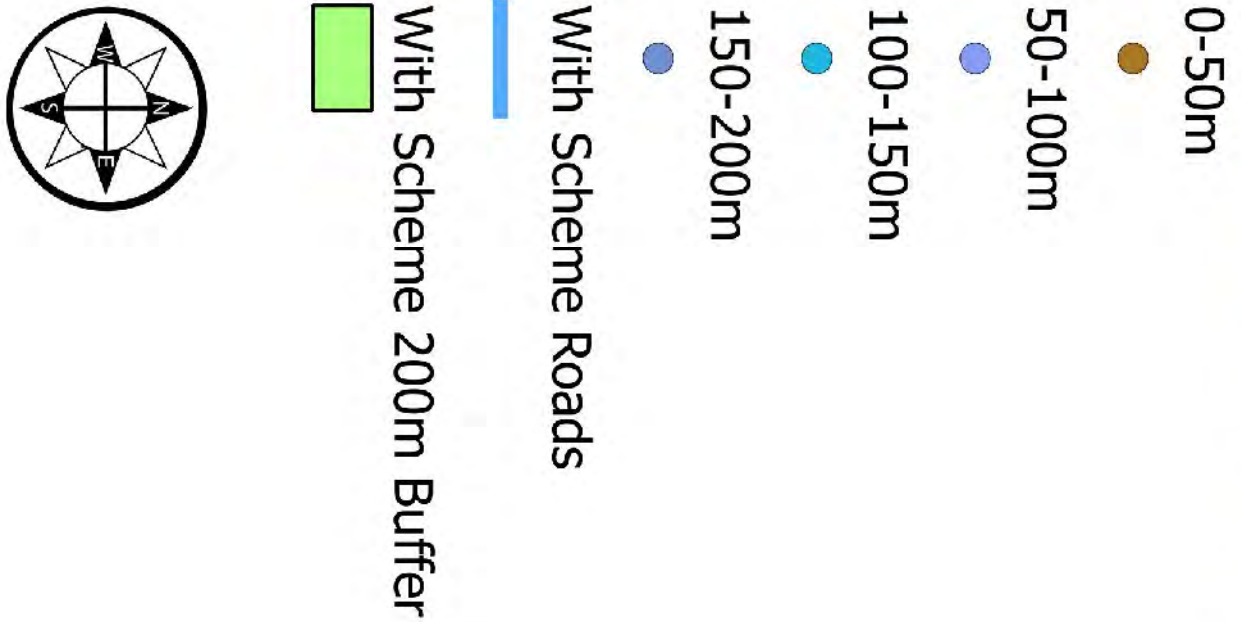
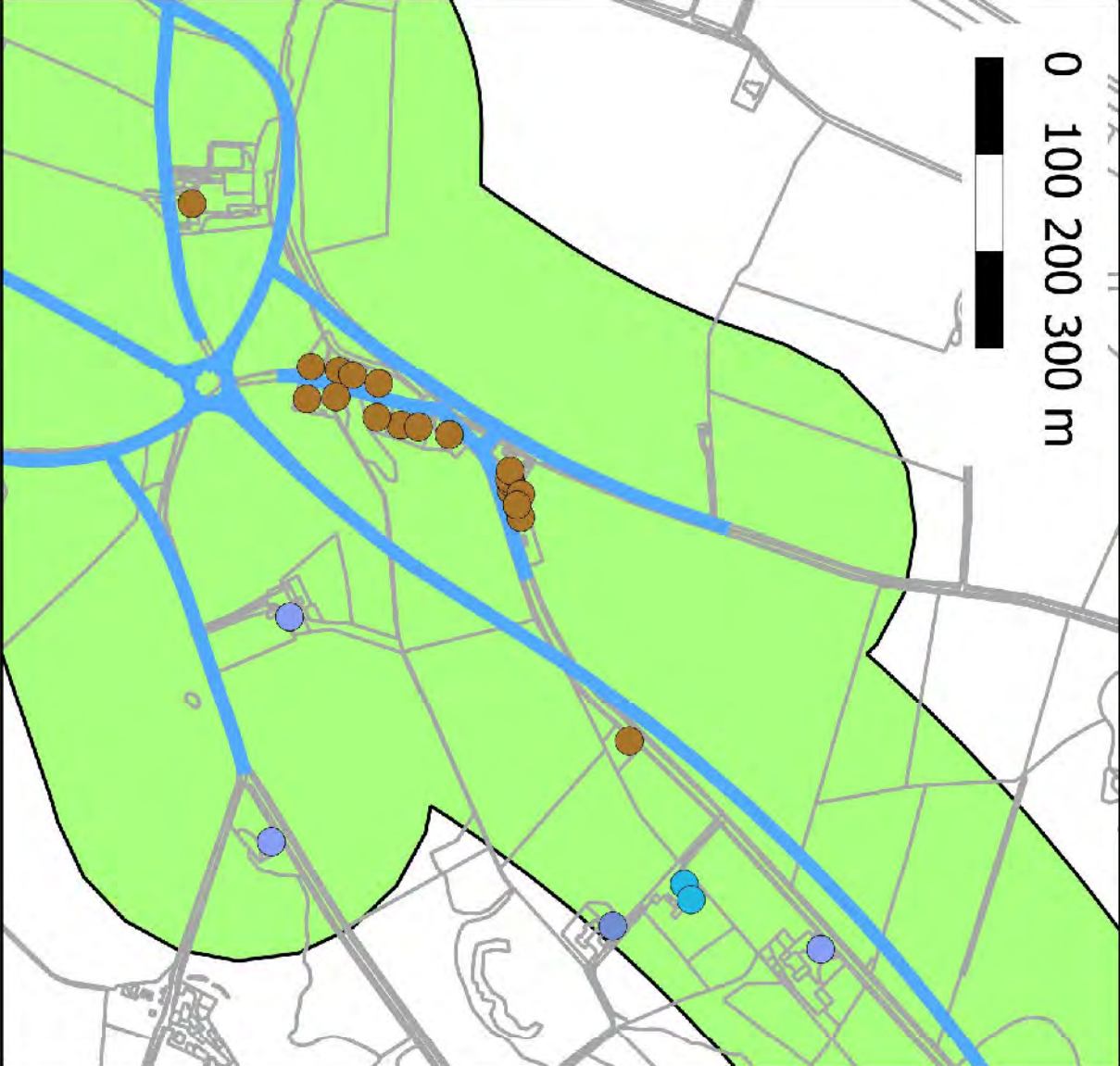
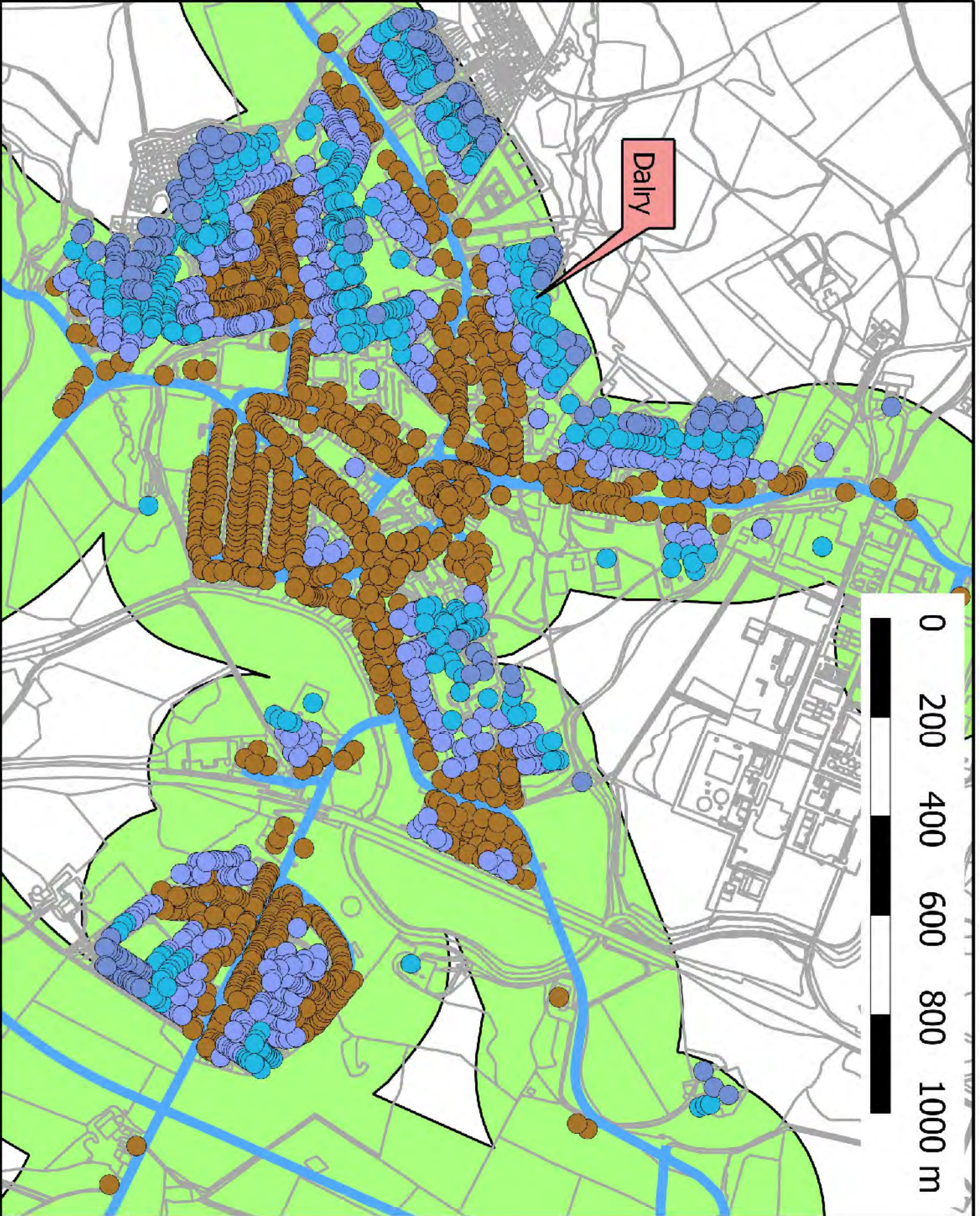
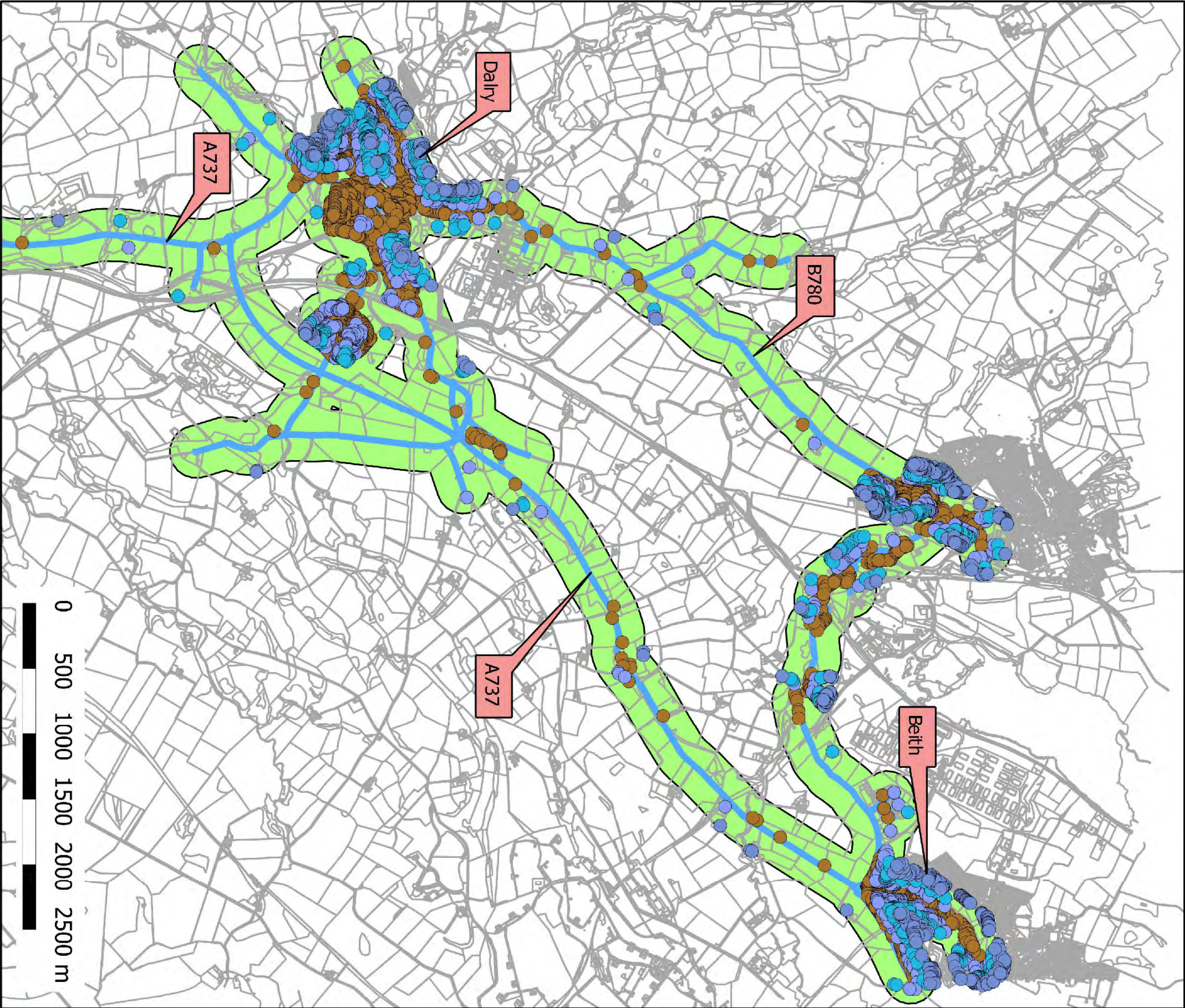


Without Scheme Roads
With Scheme Roads



CLIENT



PROJECT TITLE

A737 Dalry Bypass

01	Amendments to text								
REV		REVISIONS		BY	CHKD	APPD	DATE		

This map is based on Ordnance Survey material with the permission of Ordnance Survey on behalf of the Controller of Her Majesty's Stationary Office. Crown Copyright. Unauthorised reproduction infringes Crown copyright and may lead to prosecution or civil proceedings. Scottish Executive 100046068 2012									
DESIGN BY:	-	CHECKED BY:	-						
DATE:	-	DATE:	-						
DRAWN BY:	-	APPROVED BY:	-						
DATE:	-	DATE:	-						

DRAWING STATUS

REPORT

ENGINEER

mouchel FAIRHURST

IN ASSOCIATION WITH

SIAS

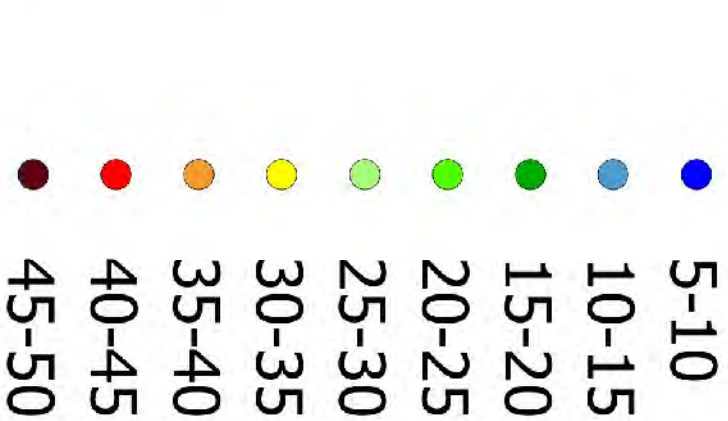
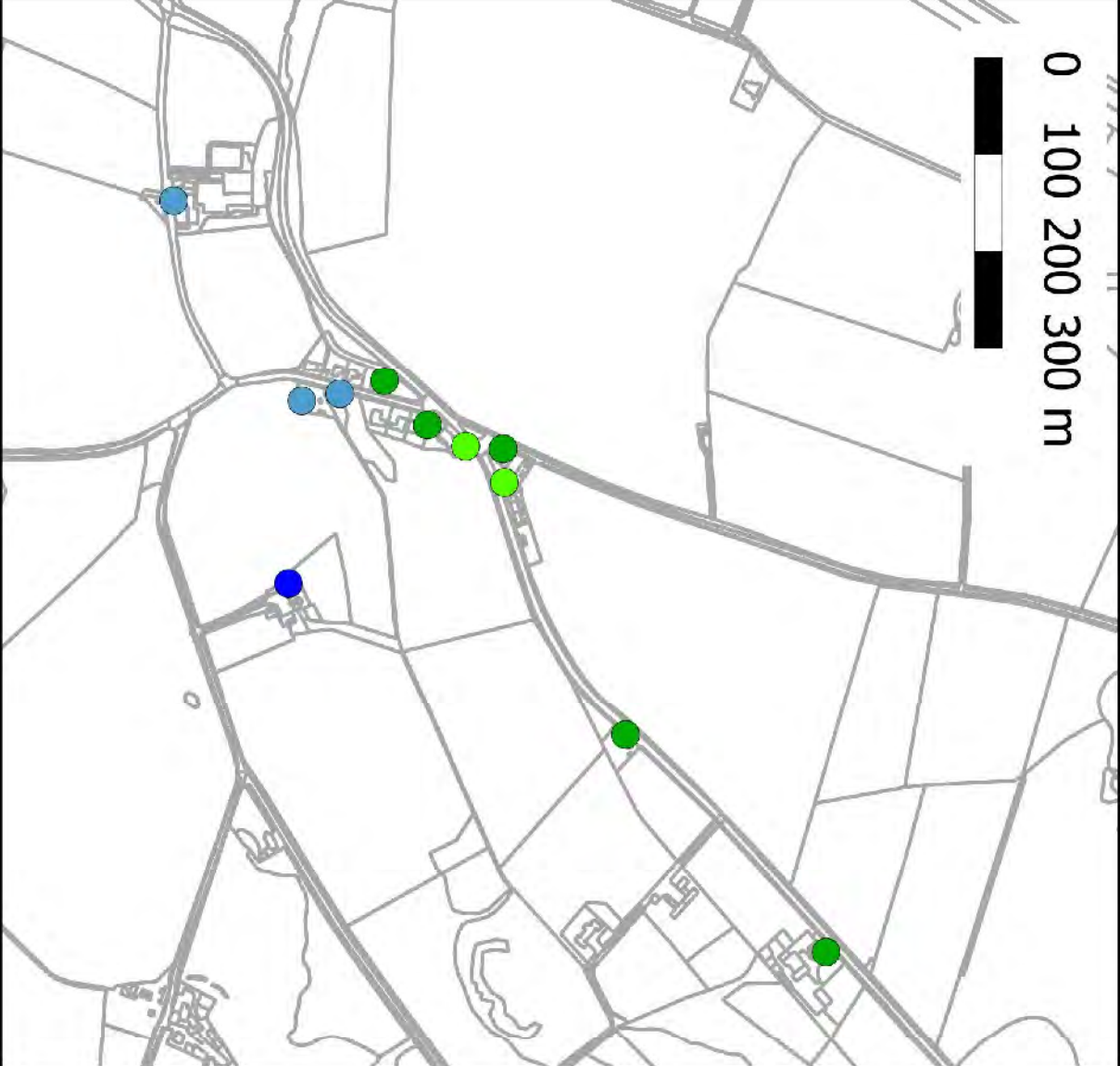
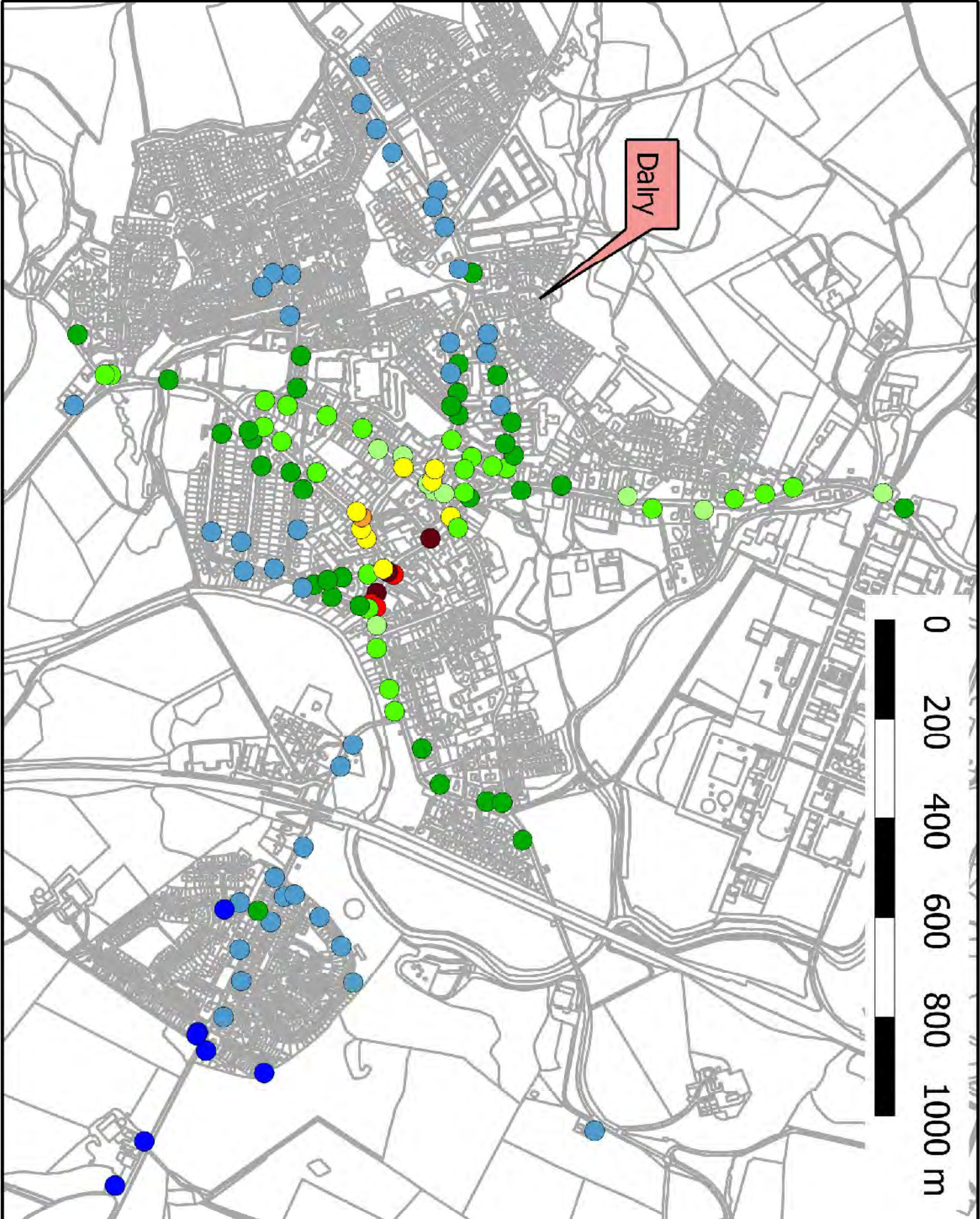
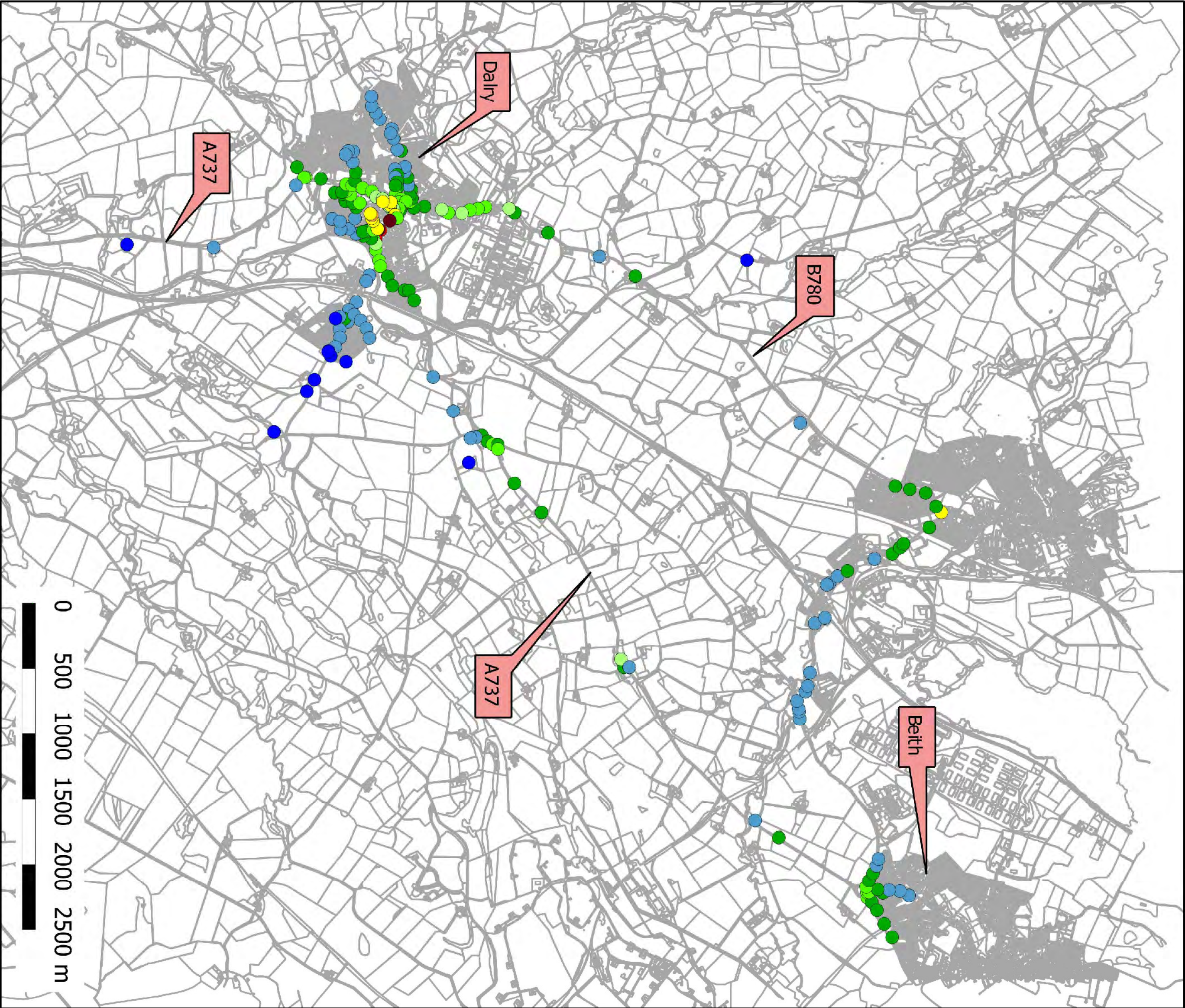
DRAWING TITLE

STAG - 200m Buffer and Address Points within Distance Bands

SCALE AT A1
As Shown

DRAWING NO
Figure 7.3

REV
01



CLIENT



PROJECT TITLE

A737 Dalry Bypass

01	Amendments to text								
REV		REVISIONS							
			BY	CHKD	APPD	DATE			
			JM	CM	RM	July 13			
AMENDMENTS									

This map is based on Ordnance Survey material with the permission of Ordnance Survey on behalf of the Controller of Her Majesty's Stationary Office. Crown Copyright. Unauthorised reproduction infringes Crown copyright and may lead to prosecution or civil proceedings. Scottish Executive 100046068 2012

DESIGN BY:	-	CHECKED BY:	-
DATE:	-	DATE:	-
DRAWN BY:	-	APPROVED BY:	-
DATE:	-	DATE:	-

DRAWING STATUS

REPORT

ENGINEER

mouchel FAIRHURST

IN ASSOCIATION WITH

SIAS

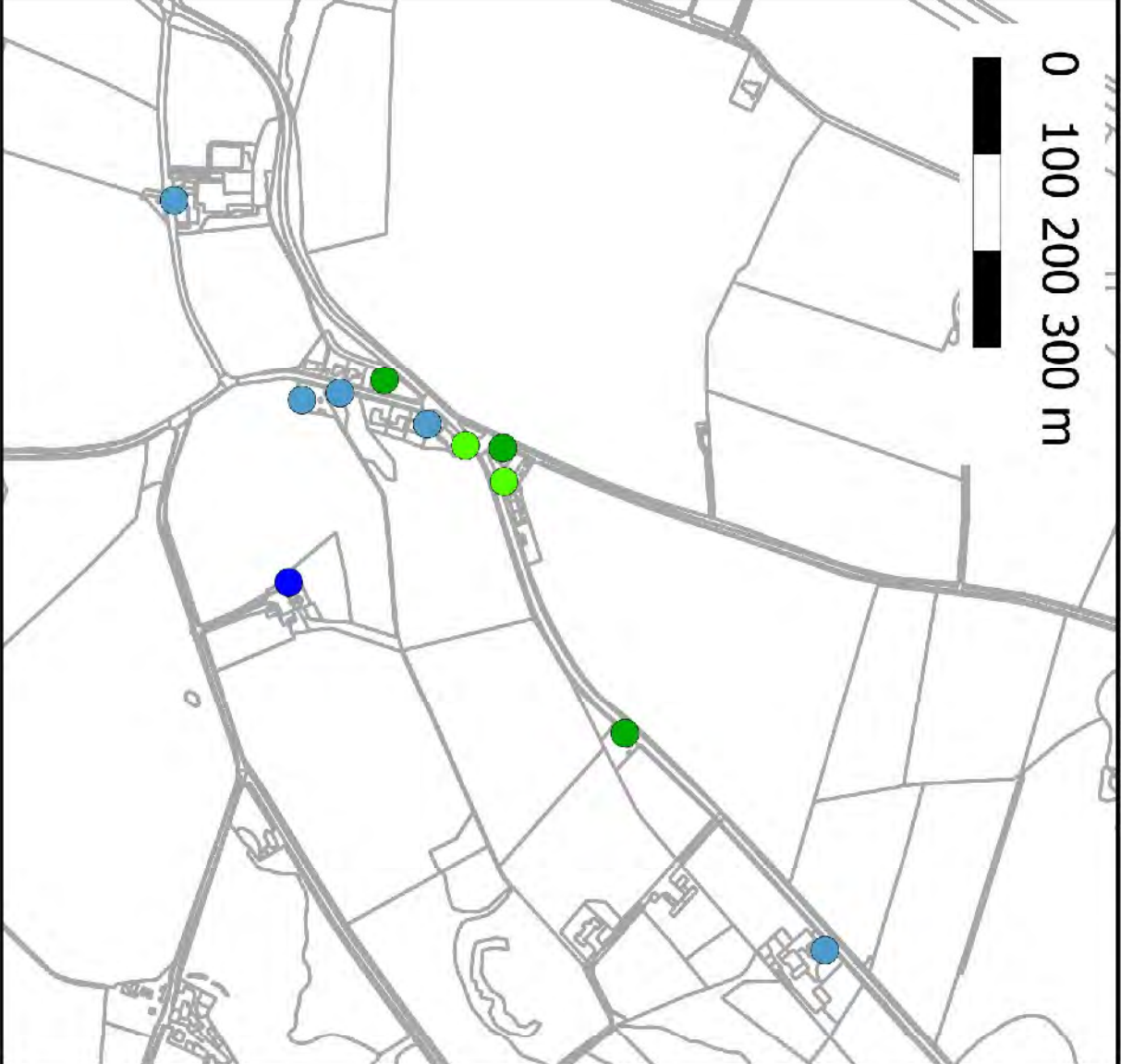
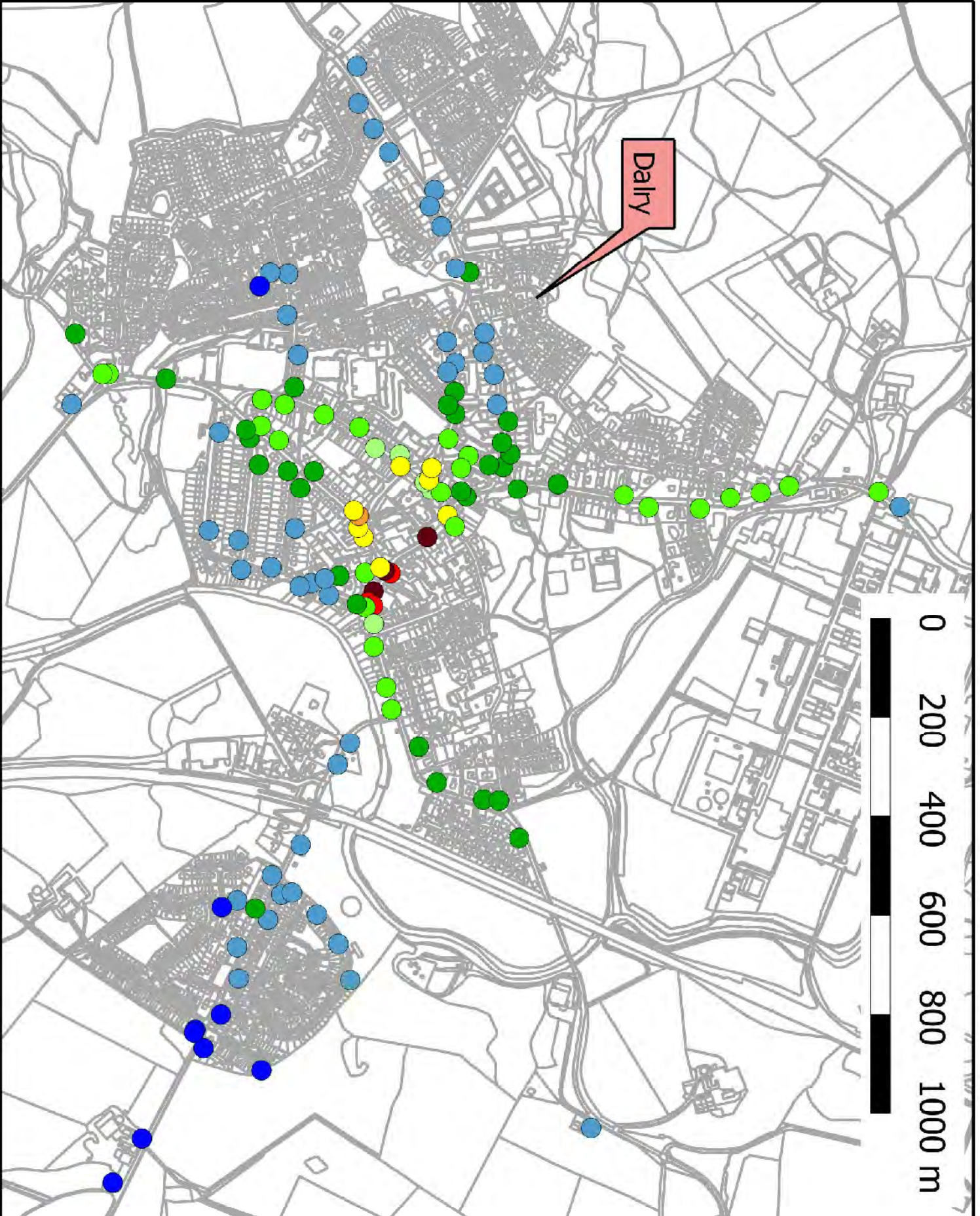
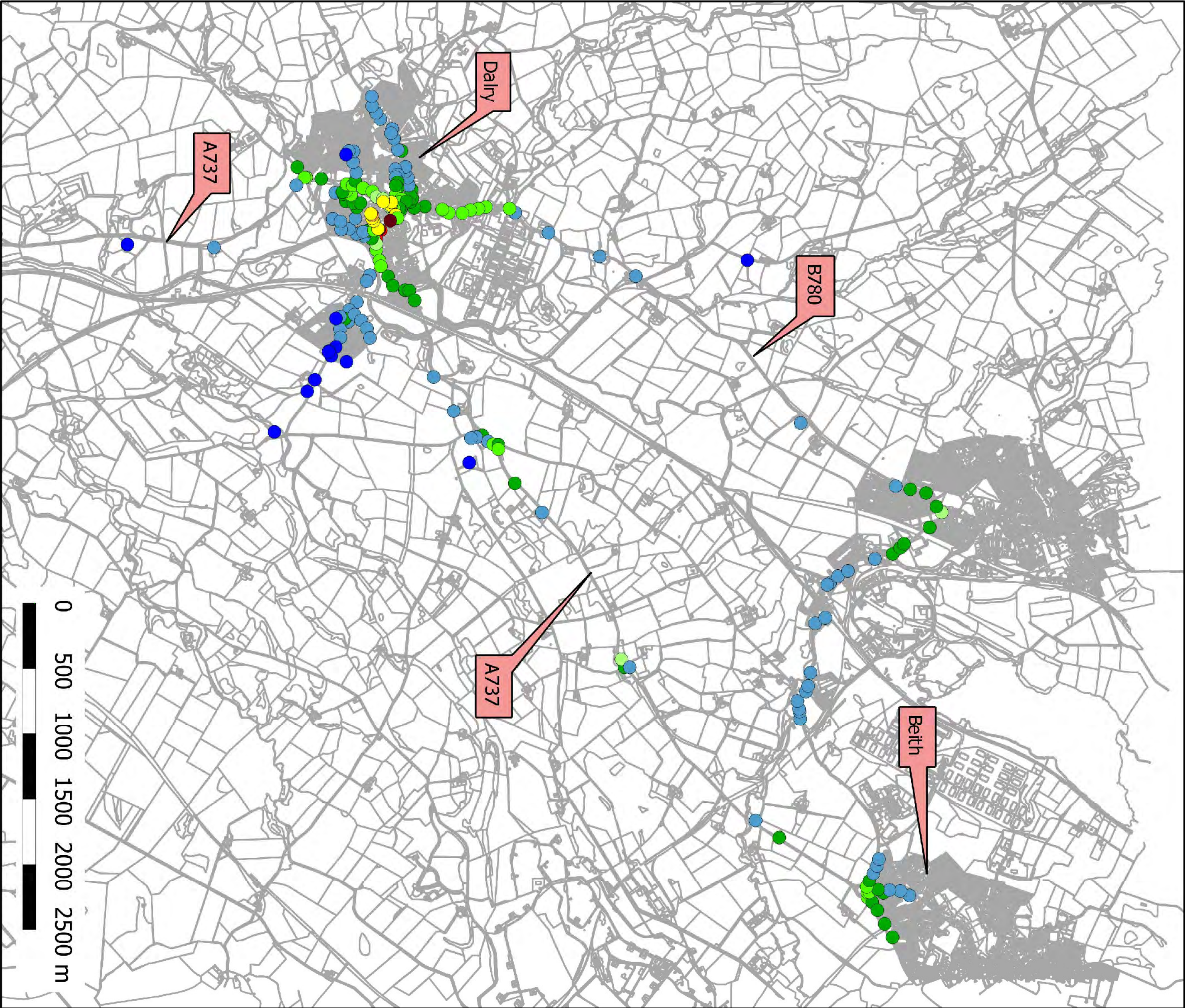
DRAWING TITLE

NO₂ 2012 - Without Scheme

SCALE AT A1
As Shown

DRAWING NO
Figure 7.5

REV
01



CLIENT



PROJECT TITLE

A737 Dalry Bypass

REV	AMENDMENTS	BY	CHKD	APPD	DATE
01	Amendments to text	JM	CM	RM	July'13

This map is based on Ordnance Survey material with the permission of Ordnance Survey on behalf of the Controller of Her Majesty's Stationary Office. Crown Copyright. Unauthorised reproduction infringes Crown copyright and may lead to prosecution or civil proceedings. Scottish Executive 1000496068 2012					
DESIGN BY:	-	CHECKED BY:	-		
DATE:	-	DATE:	-		
DRAWN BY:	-	APPROVED BY:	-		
DATE:	-	DATE:	-		

DRAWING STATUS

REPORT

ENGINEER

mouchel FAIRHURST

IN ASSOCIATION WITH
S i A S

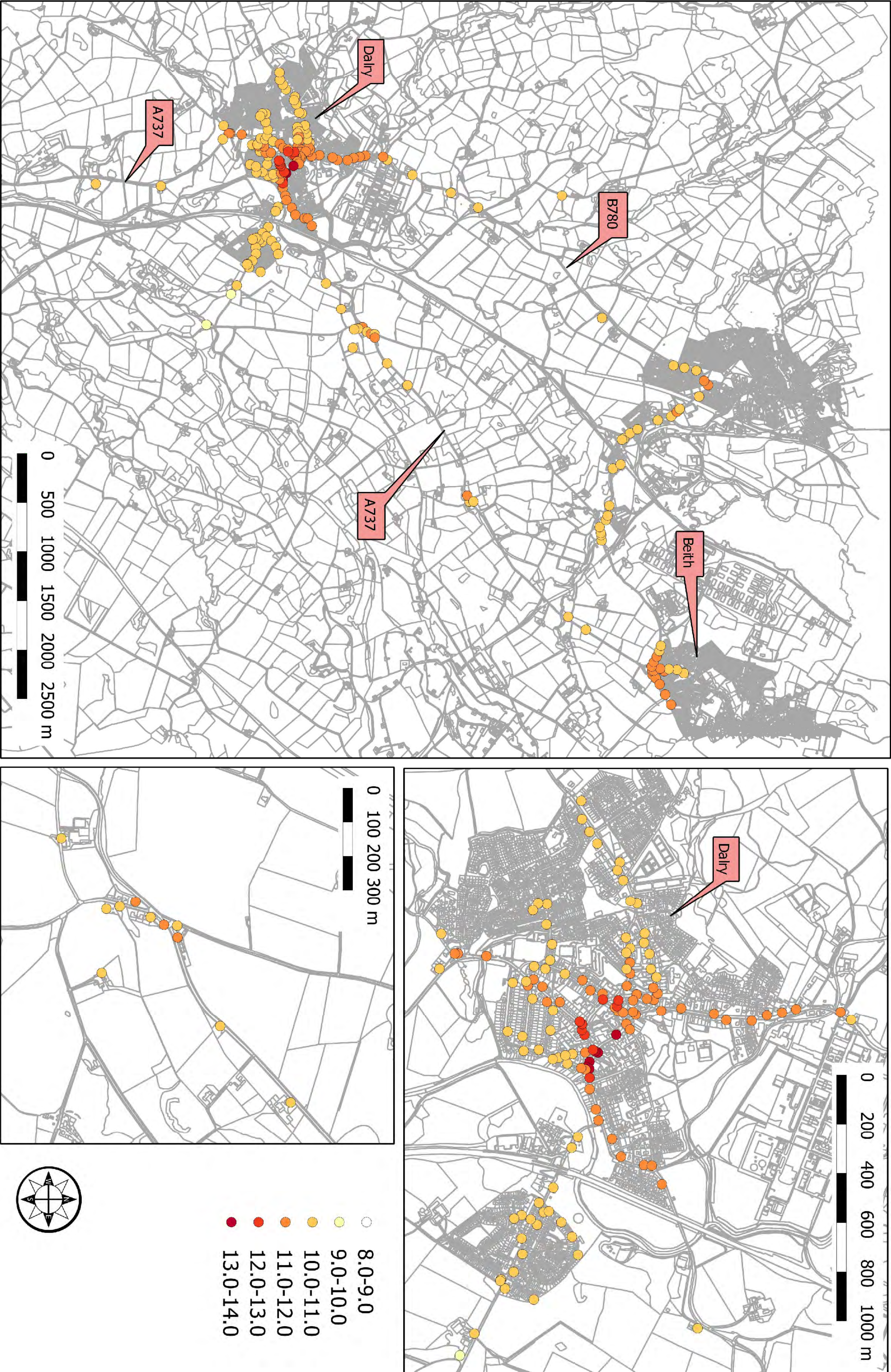
DRAWING TITLE

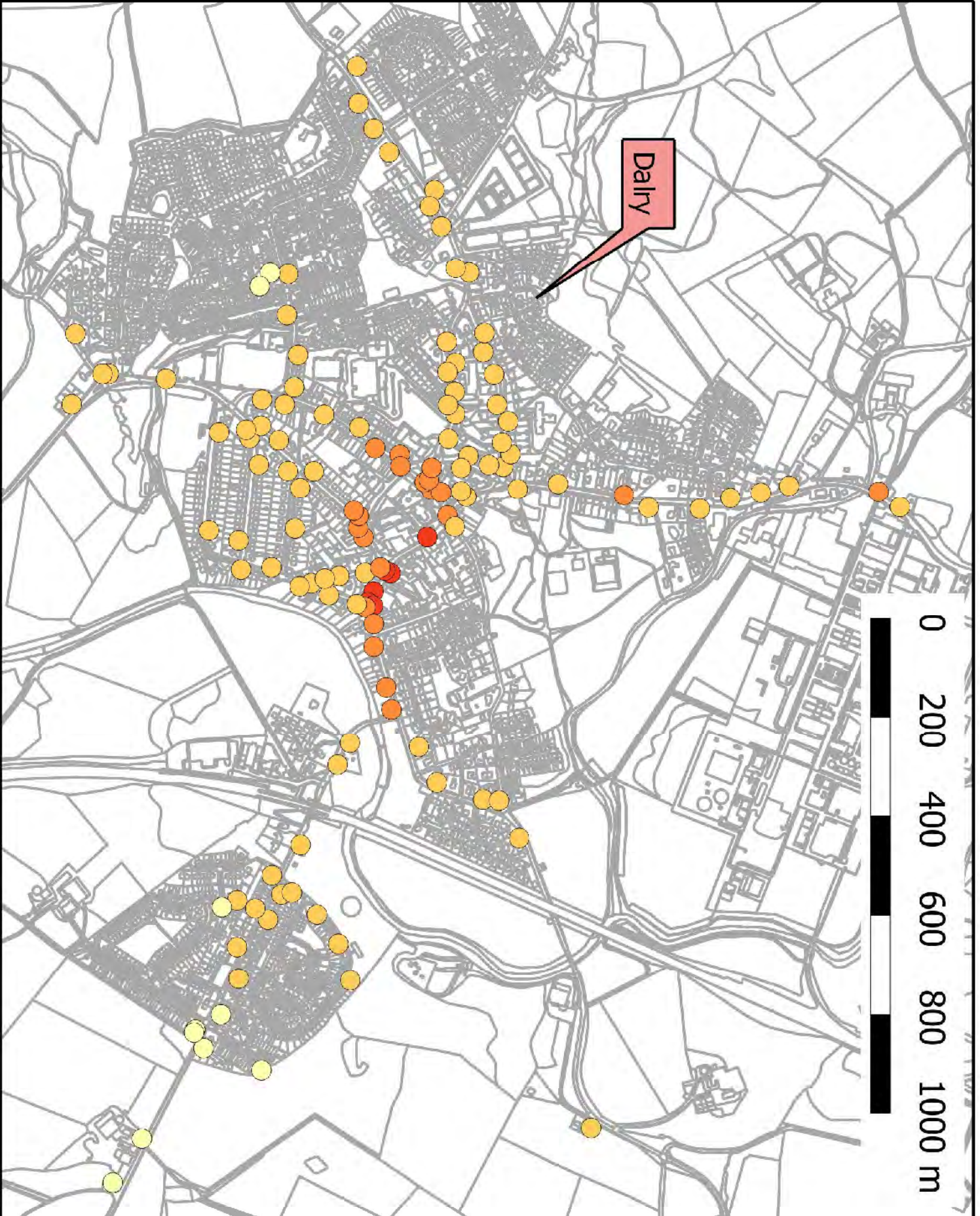
NO₂ 2016 - Without Scheme,
Without Reduction

SCALE AT A1
As Shown

DRAWING NO
Figure 7.6

REV
01





- 8.0-9.0
- 9.0-10.0
- 10.0-11.0
- 11.0-12.0
- 12.0-13.0
- 13.0-14.0



CLIENT



PROJECT TITLE

A737 Dalry Bypass

01	Amendments to text								
REV		REVISIONS		BY	CHKD	APPD	DATE		

This map is based on Ordnance Survey material with the permission of Ordnance Survey on behalf of the Controller of Her Majesty's Stationary Office Crown Copyright. Unauthorised reproduction infringes Crown copyright and may lead to prosecution or civil proceedings. Scottish Executive 100046068 2012									
DESIGN BY:	-	CHECKED BY:	-						
DATE:	-	DATE:	-						
DRAWN BY:	-	APPROVED BY:	-						
DATE:	-	DATE:	-						

ENGINEER



DRAWING TITLE

PM10 2016 - Without Scheme

SCALE AT A1	DRAWING NO	REV
As Shown	Figure 7.10	01