

SCOTTISH MINISTERS' REQUIREMENTS

SCHEDULE 7 PART 6

MANAGEMENT AND MAINTENANCE OF STRUCTURES

CONTENTS	Page No.
1. INTRODUCTION	1
1.1 General	1
2. MAINTENANCE MANAGEMENT	1
2.1 Structures Management	1
2.2 The Structures Management Function of the Integrated Roads Information System	1
2.3 Structures Maintenance Schedule	2
2.4 Maintenance and Operations Manuals and Health and Safety Files	3
3. INSPECTION REQUIREMENTS	3
3.1 General	3
3.2 Structures Safety Inspections	4
3.3 General Inspections	5
3.4 Principal Inspections	5
3.5 Scour Inspections and Assessments	6
3.6 Special Inspections	7
3.7 Weather Resistant Steel Bridge Monitoring	7
4. REQUIREMENTS FOR MAINTENANCE OF STRUCTURES	8
4.1 General	8
4.2 Substructures and Superstructures	8
4.3 Expansion Joints	8
4.4 Drainage Systems	8
4.5 Parapets and Pedestrian Protection on Structures	8
4.6 Bearings and Bearing Shelves	8
4.7 Structures Over or Conveying Watercourses	8
4.8 Sign and or Signal Gantries, High Mast Lighting and other Masts	8
4.9 Non-structural Items	9
4.10 Underpasses and Culverts also used by Pedestrians and Cyclists	9
4.11 Retaining Walls	9
5. REQUIREMENTS FOR STRUCTURAL MAINTENANCE	9
5.1 General	9
5.2 Maintenance Files	10
5.3 Structural Maintenance Programme	10
5.4 Value Management of Structural Maintenance Programme	11
5.5 Structures Scheme Cost Estimating	11
6. STRUCTURAL ASSESSMENTS	12
6.1 General	12
6.2 Structural Assessment Process	12
6.3 Structural Assessments in Progress	13

7.	MANAGEMENT OF SUB-STANDARD STRUCTURES AND STRUCTURES WITH KNOWN DEFECTS	13
7.1	General	13
7.2	Interim Measures and Monitoring	13
7.3	Strengthening and Replacement	14
8.	ACCESS SYSTEMS	15
8.1	General	15
8.2	Construction Design and Management	16
8.3	Temporary Access Systems	16
8.4	General and Principal Inspections of Access Systems	16
9.	THE TECHNICAL APPROVAL AND DEPARTURE FROM STANDARD PROCESS FOR STRUCTURES	17
9.1	General	17
10.	MANAGEMENT AND MAINTENANCE OF STRUCTURES WHERE AGREEMENTS EXIST WITH THIRD PARTIES	18
11.	BRIDGES WITH SIGNED LOW HEADROOM AND THOSE SUBJECT TO BRIDGE STRIKES BY OVERHEIGHT VEHICLES	18
ANNEX 7.6/A – Maintenance Schedule Proforma		19
ANNEX 7.6/B – List of Structures Requiring Principal Inspections		25
ANNEX 7.6/C – List of Structures Over or Carrying Watercourses which have been subject to a Stage 1 Scour Assessment		59
ANNEX 7.6/D – List of Structures Over or Carrying Watercourses which have been subject to a Stage 2 Scour Assessment		73
ANNEX 7.6/E – List of Structures subject to Assessment and Upgrading of Vehicle Parapets to Transport Scotland Interim Advice Note 25		77
ANNEX 7.6/F – List of Structures Subject to Identification of 'Particularly at Risk' Supports to Transport Scotland Interim Advice Note 29		81
ANNEX 7.6/G – Technical Approval Procedures for Assessment of Structures in Scotland		85
ANNEX 7.6/H – List of Sub-Standard Structures with Structural Assessments in Progress		89
ANNEX 7.6/I – List of Sub-Standard Structures		93
ANNEX 7.6/J – List of Structures with Known Defects Requiring Monitoring which are Sub-Standard		97

ANNEX 7.6/K – List of Structures with Known Defects Requiring Monitoring that are not Sub-Standard	101
ANNEX 7.6/L – Strengthening and Replacement Programme for the Sub-Standard Structures	105
ANNEX 7.6/M – Structures with Bridge Access Gantries and or Runway Beams	109
ANNEX 7.6/N – List of Bridges with Agreement with Third Parties that Effect Existing and Future Management, Maintenance and Replacement	113
ANNEX 7.6/O – List of Bridges with Signed Low Headroom	117
ANNEX 7.6/P – List of Structures subject to Frequent Bridges Strikes with dates of Incidents Since 2001	121

SCOTTISH MINISTERS' REQUIREMENTS

SCHEDULE 7 PART 6

MANAGEMENT AND MAINTENANCE OF STRUCTURES

1. INTRODUCTION

1.1 General

- 1.1.1 Transport Scotland's management and maintenance of Structures requirements follow the asset management principles set out in *Management of Highway Structures: A Code of Practice* and Transport Scotland's *Asset Management Plan*.
- 1.1.2 Details of all Structures for which the Director is responsible for are contained in the structures management function of the Integrated Roads Information System.
- 1.1.3 This Schedule details the inspection and maintenance requirements to be undertaken by the Operating Company to:
 - (i) maintain Structures in good and safe repair,
 - (ii) ensure Structures are safe for use, fit for purpose and can carry current traffic loads, and
 - (iii) facilitate the planning and prioritisation of maintenance Operations and Special Inspections.
- 1.1.4 The requirements of this Schedule apply to Structures for which the Director is responsible and which are contained in the structures management function of the Integrated Roads Information System.
- 1.1.5 The Operating Company shall include documented procedures in its Management System to deliver the requirements of this Part.

2. MAINTENANCE MANAGEMENT

2.1 Structures Management

- 2.1.1 In accordance with the requirements of Schedule 5 Part 4, the Operating Company shall appoint:
 - (i) a Bridges Manager who shall be a member of the Operating Company's Core Management Team,
 - (ii) a Major Bridges Manager to deliver the requirements of Schedule 7 Part 7 who shall report directly to the Bridges Manager, and
 - (iii) a Gantry Manager to deliver the requirements of paragraph 8 of this Part who shall report directly to the Bridges Manager.

The Operating Company may combine the roles of the Major Bridges Manager and Gantry Manager. The Bridges Manager shall be a separate role.

2.2 The Structures Management Function of the Integrated Roads Information System

- 2.2.1 The structures management function of the Integrated Roads Information System database is used to record the information and programmes relating to the management, monitoring and maintenance of existing and proposed Structures. The

Operating Company shall use and update the structures management function of the Integrated Roads Information System database in accordance with the procedures specified in the system user manual and the *Transport Scotland Inspection Manual – Principal Inspections of Trunk Road Structures and Location System* as issued by the Director and as amended and re-issued by the Director from time to time. The structures management function of the Integrated Roads Information System shall be kept up to date by the Operating Company throughout the duration of this Contract.

2.2.2 The Operating Company shall update all data held in the structures management function of the Integrated Roads Information System, as follows:

- (i) within three Working Days of becoming aware of any new data or changes to existing data, particularly after any inspections of Structures have been undertaken, and
- (ii) when existing Structures including sign gantries have been:
 - (a) demolished or infilled,
 - (b) newly constructed,
 - (c) widened,
 - (d) maintained and subjected to remedial works, or
 - (e) strengthened and or improved.

2.3 Structures Maintenance Schedule

2.3.1 No later than 30 days prior to the Commencement of Service Date, the incoming Operating Company shall review the maintenance schedule of the outgoing operating company to assist in the Operating Company's development of its own maintenance schedule for this Contract. Maintenance schedule duties shall be undertaken at least twice per year in each Annual Period as follows:

- (i) at the end of the autumnal leaf fall (and no later than November), and
 - (ii) the beginning of summer (May or June),
- or additionally when required.

2.3.2 No later than 25 Working Days prior to the commencement of the first Annual Period and all subsequent Annual Periods, the Operating Company shall prepare a maintenance schedule and submit it to the Director for written consent. The maintenance schedule shall itemise the maintenance requirements for each Structure and associated Access Systems.

2.3.3 The Operating Company shall ensure that it has sufficiently trained staff available to undertake the duties in the agreed maintenance schedule.

2.3.4 A summarised example of the maintenance schedule is provided in Annex 7.6/A of this Part and includes provisions for recording:

- (i) the results of Structures Safety Inspections and tests,
- (ii) the actions taken including the dates these were taken and completed,
- (iii) the dates when maintenance is due to be carried out, and

- (iv) the updates to the maintenance requirements throughout the Contract Period.

2.3.5 Throughout the Contract Period, the Operating Company shall update the maintenance schedule within five Working Days of undertaking any work with:

- (i) the dates and details of the Structures Safety Inspections undertaken,
- (ii) the dates and details of any tests carried out,
- (iii) any other actions taken, and
- (iv) the dates when further maintenance is required.

The Operating Company shall also update the maintenance schedule when changes to maintenance are required to comply with the requirements of this Schedule.

2.3.6 Before commencing maintenance activities identified in the maintenance schedule each year, the Operating Company shall submit a programme to the Director and the Performance Audit Group which identifies the number of maintenance activities which are programmed to be carried out each month.

2.4 Maintenance and Operations Manuals and Health and Safety Files

2.4.1 The Operating Company shall review and update annually all maintenance and operations manuals and health and safety files for Structures. This review and update shall ensure all maintenance and operations manuals and health and safety files for Structures comply with current legislation and safe working practices and contain any changes to the maintenance requirements of the Structure.

The Operating Company shall prepare a report detailing the findings and changes made as part of the annual review. This report shall be submitted to the Director within three Working Days of the completion of the review.

2.4.2 The Operating Company shall notify the Director of missing maintenance and operations manuals and missing health and safety files for Structures which should be available. The Director shall issue an Order to the Operating Company stating his requirements for rectifying such occurrences.

2.4.3 No later than 15 Working Days after completion of any works to new or existing Structures by the Operating Company or by a Works Contractor, the Operating Company shall submit to the Director new and amended as-built records, including maintenance and operations manuals and health and safety files required by the *Design Manual for Roads and Bridges*.

3. INSPECTION REQUIREMENTS

3.1 General

3.1.1 The Operating Company shall undertake:

- (i) Structures Safety Inspections,
- (ii) General Inspections,
- (iii) Principal Inspections,
- (iv) Scour Inspections and Assessments, and
- (v) Special Inspections.

All inspections shall be undertaken in accordance with the standards and advice notes contained in the *Design Manual for Roads and Bridges* and the following Transport Scotland documents:

- (vi) *Transport Scotland Inspection Manual – Principal Inspections of Trunk Road Structures and Location System*,
- (vii) *Structures Management System user manual*, and
- (viii) *Inspections Further Data Collection Requirements*.

All Trunk Road Structures are subject to these inspection requirements, except where specifically excluded by the Director. All Principal Inspections of Structures with a span of greater than 10 metres shall be undertaken by a chartered civil or structural engineer.

- 3.1.2 Inspections on Structures that are accommodation bridges for private users shall include the road surface on the Structure and for a further five metres beyond either end of the Structure, together with any provided surface water drainage. Vehicular restraint systems, where provided, shall be inspected for a minimum of 30 metres from each terminal or anchorage at the parapet interface.

3.2 Structures Safety Inspections

- 3.2.1 Structures Safety Inspections shall be undertaken by the Operating Company at the same time as other inspection and maintenance duties.

Structures Safety Inspections shall be undertaken to identify any deficiencies which, if not rectified, represent or may result in:

- (i) a danger to the public and which therefore require immediate or urgent action,
- (ii) accidents,
- (iii) deterioration or behaviours indicating a reduction in load carrying capacity, and
- (iv) high repair costs.

- 3.2.2 The Operating Company shall undertake two types of Structures Safety Inspections:

- (i) random, and
- (ii) reactive.

The Operating Company shall undertake random Structures Safety Inspections during maintenance of Structures. When undertaking the random Structures Safety Inspection the Operating Company shall:

- (iii) observe the Structure,
- (iv) record any signs of problems or deficiencies, and
- (v) report them to the Bridges Manager.

The Operating Company shall undertake reactive Structures Safety Inspections after a problem or deficiency has been observed or reported by:

- (vi) any of the Operating Company's staff, or
- (vii) the Police or the public,

and report them to the Bridges Manager.

The Operating Company shall submit a monthly report to the Director's bridges manager detailing the findings of all random and reactive Structures Safety Inspections.

Before commencing General Inspections each year the Operating Company shall submit a programme to the Director and the Performance Audit Group which identifies the number of inspections which are programmed to be carried out each month.

- 3.2.3 The Operating Company shall identify, classify and record Defects observed as either Category 1 or Category 2 Defects in accordance with the requirements of Schedule 7 Part 1. The Operating Company shall take action appropriate to the category and severity of such Category 1 or Category 2 Defects.

3.3 General Inspections

- 3.3.1 The Operating Company shall undertake General Inspections at intervals not exceeding two years. This shall exclude any Structures on which a Principal Inspection has been carried out during the same Annual Period in which the General Inspection is due to be conducted.

- 3.3.2 The programme of General Inspections for each Structure shall be coordinated with the programme of Principal Inspections for each Structure using the following continuous six year inspection cycle:

- (i) Principal Inspection,
- (ii) General Inspection two years later,
- (iii) General Inspection four years later,
- (iv) Principal Inspection six years later.

The Operating Company shall use the existing cycle of inspections undertaken by the previous operating company as the basis for developing and implementing an inspection programme that shall meet these inspection requirements.

Before commencing General Inspections each year the Operating Company shall submit a programme which identifies the number of inspections which are programmed to be carried out each month to the Director and the Performance Audit Group.

- 3.3.3 When undertaking General Inspections, the Operating Company shall record the condition of every part of a Structure visible from the ground and deck level and, where necessary, access confined spaces including box girders and culverts.

General Inspections shall be recorded on a proforma provided within the structures management function of the Integrated Roads Information System. For any Defects found, the Defect description and priority ranking used shall be in accordance with the requirements in *The Inspection Manual for Highways Structures Volume 1* and the *Transport Scotland Inspection Manual – Principal Inspections of Trunk Road Structures and Location System*.

3.4 Principal Inspections

- 3.4.1 Structures for which Principal Inspections are required are listed within the structures management function of the Integrated Roads Information System and in

Annex 7.6/B of this Part. Details of the year in which the next Principal Inspection is due for each Structure are provided in Annex 7.6/B of this Part.

The Operating Company shall undertake Principal Inspections during the specified year for Structures listed in Annex 7.6/B of this Part at intervals not greater than six years after the preceding Principal Inspection. Principal Inspections shall include access to confined spaces within relevant Structures including box girders and culverts. Unless requested otherwise by the Director, the result of a Principal Inspection shall be recorded within the structures management function of the Integrated Roads Information System.

Before commencing Principal Inspections each year the Operating Company shall submit a programme which identifies the number of inspections which are programmed to be carried out each month to the Director and the Performance Audit Group.

3.5 Scour Inspections and Assessments

3.5.1 Scour Inspections and scour assessments shall be executed as part of the General Inspection and Principal Inspection, unless instructed otherwise by the Director.

3.5.2 The Operating Company shall carry out underwater Scour Inspections at the same time as undertaking Principal Inspections for those Structures identified in Annexes 7.6/C and 7.6/D of this Part as requiring Scour Inspections. Prior to carrying out a Scour Inspection, the Operating Company shall review any previous Stage 1 and Stage 2 Scour Assessments undertaken in accordance with BA74 of the *Design Manual for Roads and Bridges* so that any changes in conditions can be identified during the Scour Inspection. The Operating Company shall assess the potential for scour and record any observations as part of Principal Inspections together with any observations related to the scour noted and recorded during General Inspections. Scour Inspection reports shall be included as a part of the Principal Inspection report.

3.5.3 Scour Inspections and assessments shall be undertaken in accordance with the *Design Manual for Roads and Bridges* and require a two stage approach to identify those Structures where the potential risk of scour is considered high. All Structures over watercourses are listed in Annex 7.6/C of this Part and have been subject to Stage 1 assessment in accordance with BA74 of the *Design Manual for Roads and Bridges*.

In accordance with *Design Manual for Roads and Bridges*, the Operating Company shall ensure that the individual undertaking the inspection shall have the required knowledge and experience.

3.5.4 When a Stage 1 Scour Assessment is required, the Operating Company shall undertake a Scour Inspection and collect the data regarding the Structure, its foundations, the river and any information on the history of the Structure and any problems experienced. Where a risk of scour is identified, a Stage 2 Scour Assessment shall be required.

3.5.5 A Stage 2 Scour Assessment shall involve a calculation of the potential scour depths and an assessment of priority rating. Existing Structures that have had a Stage 2 Scour Assessment are listed in Annex 7.6/D of this Part.

3.5.6 The Operating Company shall undertake Scour Inspections of Structures at General Inspection and Principal Inspection, and shall include foundations of Structures, part

of the Structures and scour prevention training works that are at risk of scour. This shall be done to assess whether there are changes to the river channel or watercourse that could affect the conclusions on safety recorded in the existing Stage 1 and Stage 2 Scour Assessments. These shall be recorded as part of the General Inspection and Principal Inspection process.

The need for additional Scour Inspections to Structures after periods of heavy rainfall shall be assessed by the Operating Company as a reactive Structures Safety Inspection and, where required, a Special Inspection shall be undertaken.

- 3.5.7 When required by BA74 of the *Design Manual for Roads and Bridges*, the Director shall issue an Order for the Operating Company to undertake Stage 1 and Stage 2 Scour Assessments of a Structure.

3.6 Special Inspections

- 3.6.1 Subject to an Order, the Operating Company shall undertake Special Inspections to investigate particular concerns rather than at programmed intervals.
- 3.6.2 Special Inspections shall generally be undertaken by the Operating Company to investigate a Defect identified during a General Inspection or Principal Inspection.

3.7 Weather Resistant Steel Bridge Monitoring

- 3.7.1 The Operating Company shall undertake the management and monitoring of Structures incorporating weather resistant steel in accordance with:
- (i) the *Design Manual for Roads and Bridges*, and
 - (ii) the requirements for carrying out and reporting General and Principal Inspections referred to in paragraphs 3.3 and 3.4 of this Part.
- 3.7.2 Structures incorporating weather resistant steel which require monitoring are listed within the structures management function of the Integrated Roads Information System. The system contains data on the year in which the next Principal Inspection is due and the last year in which the steel thickness measurements were taken.
- 3.7.3 The Operating Company shall ensure that steel thickness measurement data is recorded, stored and presented in Principal Inspection reports in order that corrosion trends are apparent. Only certified calibrated gauges may be used. The structures management function of the Integrated Roads Information System contains data on the measurements, locations and previously measured steel thicknesses. The Operating Company shall use such data to monitor the corrosion trends and report on them in the relevant Principal Inspection reports.
- 3.7.4 The Operating Company shall measure, record, store and present the results of the actual steel thicknesses at the critical locations as in the Principal Inspection reports.
- 3.7.5 The Operating Company shall incorporate in its General Inspection procedures a visual inspection procedure of the critical areas where measurements are taken and areas prone to corrosion, particularly in the vicinity of all deck joints, at intervals not exceeding two years.

4. REQUIREMENTS FOR MAINTENANCE OF STRUCTURES

4.1 General

- 4.1.1 Maintenance of Structures and any associated Access System comprises activities relating to servicing of the Structure. Maintenance shall be undertaken regularly or at pre-determined intervals in accordance with any operations manual, log book or maintenance schedule.

Maintenance of Structures does not cover the repair or renewal of structural elements or components that have become unserviceable due to general wear and tear or which have deteriorated for other reasons. Such work must be identified by the Operating Company during inspections and assessments and included in the planned structural maintenance detailed in paragraph 5 of this Part.

- 4.1.2 The Operating Company shall carry out maintenance of Structures as required, and at least twice per year, to meet the requirements of this Part.
- 4.1.3 All graffiti shall be dealt with in accordance with the requirements of Schedule 7 Part 1.

4.2 Substructures and Superstructures

- 4.2.1 The Operating Company shall undertake maintenance of substructures and superstructures in accordance with the Specification.

4.3 Expansion Joints

- 4.3.1 The Operating Company shall undertake maintenance of expansion joints in accordance with the Specification and in addition shall report any Category 1 Defects immediately to the Director for further investigation and repair.

4.4 Drainage Systems

- 4.4.1 The Operating Company shall undertake maintenance of drainage systems including carriageway drainage on or adjacent to Structures in accordance with the Specification and shall include clearing drainage outlet manholes.

4.5 Parapets and Pedestrian Protection on Structures

- 4.5.1 The Operating Company shall undertake maintenance of parapets and pedestrian protection on Structures in accordance with the Specification and in addition shall report any Category 1 Defects immediately to the Director for further investigation and repair.

4.6 Bearings and Bearing Shelves

- 4.6.1 The Operating Company shall undertake maintenance of bearings and bearing shelves in accordance with the Specification and in addition shall report any Category 1 Defects immediately to the Director for further investigation and repair.

4.7 Structures Over or Conveying Watercourses

- 4.7.1 The Operating Company shall undertake maintenance of Structures over or conveying watercourses in accordance with the Specification. It shall include all the requirements detailed in paragraphs 4.1 to 4.6 and 4.9 of this Part.

4.8 Sign and or Signal Gantries, High Mast Lighting and other Masts

- 4.8.1 The Operating Company shall undertake maintenance of the non electrical components of sign gantries, signal gantries, high mast lighting and other masts

where not already covered by Schedule 7 Part 1, in accordance with the Specification and in addition shall report any Defects immediately to the Director for further investigation and repair.

4.9 Non-structural Items

4.9.1 Non-structural items exclude Access Systems associated with Structures. Non-structural items include but are not limited to:

- (i) access stairs,
- (ii) access platforms,
- (iii) hinges,
- (iv) doors,
- (v) ladders,
- (vi) pumps,
- (vii) access chambers,
- (viii) sumps,
- (ix) grills,
- (x) trash screens,
- (xi) access covers,
- (xii) watergates,
- (xiii) ventilation ducts and grills, and
- (xiv) ancillary lighting connected with the above.

4.9.2 The Operating Company shall undertake maintenance of non-structural items associated with Structures in accordance with the Specification.

4.9.3 The Operating Company shall ensure that all non-structural items associated with Structures operate effectively.

4.10 Underpasses and Culverts also used by Pedestrians and Cyclists

4.10.1 The Operating Company shall undertake maintenance of underpasses and culverts used by pedestrians, cyclists and other road users in accordance with the Specification.

4.11 Retaining Walls

4.11.1 The Operating Company shall undertake maintenance of retaining walls in accordance with the Specification.

5. REQUIREMENTS FOR STRUCTURAL MAINTENANCE

5.1 General

5.1.1 Structural maintenance shall include the repair, renewal and replacement of structural elements or components that have become unserviceable through wear and tear or deteriorated with time and usage or which have been damaged.

- 5.1.2 Structural maintenance shall include the upgrading of Structures to bring specific elements and components of Structures up to current requirements, including safety and durability standards.
- 5.1.3 The Operating Company shall determine the structural maintenance requirements from the results of:
- (i) Structures Safety Inspections,
 - (ii) General Inspections,
 - (iii) Principal Inspections,
 - (iv) Special Inspections,
 - (v) Scour Inspections,
 - (vi) Scour Assessments,
 - (vii) Bridge Assessments,
 - (viii) previous maintenance programmes,
 - (ix) the Transport Scotland structures workbank, as advised by the Director, and
 - (x) any other special programmes or assessments advised or ordered by the Director including, but not limited, to parapet and vehicle restraint system assessments and at-risk pier assessments.
- 5.1.4 Recommendations for structural maintenance Operations shall be submitted to the Director by the Operating Company as part of the annual Bids and programme process in accordance with the requirements of Schedule 4 Part 1.

5.2 Maintenance Files

- 5.2.1 The Bridges Manager shall keep Structures maintenance files at the Central Office for each Structure. These shall be in paper and Electronic Copy and referenced by Route name, the junctions between which they are located, and national Ordnance Survey grid coordinates.

Maintenance files for Structures shall contain:

- (i) copies of all inspections together with details of structural maintenance and repair, and
- (ii) drawings and records showing:
 - (a) location and extent of maintenance Operations and Works,
 - (b) materials employed,
 - (c) date of implementation,
 - (d) details of Works Contractors and subcontractors employed, and
 - (e) costs of Operations and Works.

5.3 Structural Maintenance Programme

- 5.3.1 The Bridges Manager shall review:
- (i) inspection, assessment, special investigation and feasibility reports for Structures and Access Systems,

- (ii) reports and information relating to the monitoring and management of sub-standard Structures,
- (iii) monitoring requirements for Structures with known Defects,
- (iv) test results and known strengthening and replacement requirements,
- (v) the Transport Scotland Structures Workbank,
- (vi) special programmes,
- (vii) previous maintenance programmes, and
- (viii) any other special programmes or assessments advised or ordered by the Director,

and identify and prioritise:

- (ix) maintenance, strengthening and replacement Operations required for Structures and any associated Access Systems,
- (x) Special Inspections, Scour Inspection and assessments,
- (xi) at-risk pier assessments,
- (xii) parapet and vehicle restraint system assessments,
- (xiii) Structures Assessments and interim and formal measures for sub-standard Structures,
- (xiv) monitoring requirements for Structures with known Defects, and
- (xv) any other special programmes or assessments advised or ordered by the Director,

for inclusion in the annual Bids and programmes process.

5.4 Value Management of Structural Maintenance Programme

- 5.4.1 In addition to preparing the structural maintenance programme set out in paragraphs 5.1 to 5.3 of this Part, the Operating Company shall prioritise and rank all the Schemes in such programme as well as Schemes with priority three and four work arising from Principal and General Inspections undertaken in an inspection year. This shall be done using the techniques described in *Maintenance and Making Better Use – Value Management of the Structures Renewal Programme – Amended for Transport Scotland*.

The output from the value management prioritisation shall be submitted to the Director for his written consent and form the basis of the following year's programme. The Director shall consider the output of the prioritisation along with any other Schemes to be included in the programme, which shall be prioritised and ranked. All programmes shall be submitted in accordance with the dates set out in the annual process described in Schedule 4 Part 1.

- 5.4.2 The Director may, from time to time and at his own discretion, review, change and re-prioritise the Schemes to be included in the agreed programme.

5.5 Structures Scheme Cost Estimating

- 5.5.1 All Structures Scheme cost estimates, shall be reviewed by the Operating Company and if required, revised prior to undergoing value management as set out in paragraph 5.4 of this Part.

- 5.5.2 All Structures Scheme cost estimates shall be developed in line with the requirements of this Contract. Where the scope of works changes, Scheme cost estimates shall be revised to ensure they reflect the change in scope and are accurate. The Operating Company shall, when requested, provide the Director with the current scope of works and accurate cost estimate to be used for value management as set out in paragraph 5.4 of this Part.

6. STRUCTURAL ASSESSMENTS

6.1 General

- 6.1.1 Structural assessments and the resulting required actions are essential in ensuring that all Structures remain in a safe and serviceable state. The Operating Company shall inform the Director immediately of any issue or deterioration identified as a result of a structural assessment that has a detrimental effect on the load carrying capacity of a Structure.
- 6.1.2 Subject to an Order, the Operating Company shall undertake:
- (i) structural assessments required due to increases in vehicle loadings above those used in the design of a Structure,
 - (ii) assess a Structure or part of a Structure that is noted in an inspection to have deteriorated, and whose design or assessed load carrying capacity may have been reduced,
 - (iii) assess a Structure or part of a Structure as a result of accidental damage,
 - (iv) assessment of Structures without HB ratings,
 - (v) assessment and upgrading of vehicle parapets in accordance with *Transport Scotland Interim Advice Note 25*,
 - (vi) a two stage structural review and assessment of all Trunk Road Structures during this Contract for the purpose of establishing or confirming the validity of the latest assessment, or their original design if there has been no subsequent assessment, and
 - (vii) identification and assessment of 'particularly at risk' supports in accordance with *Transport Scotland Interim Advice Note 29*.
- 6.1.3 Structural reviews and assessments shall be undertaken on a six year cycle to coincide with a Principal Inspection or as ordered by the Director.
- 6.1.4 Annexes 7.6/E & 7.6/F of this Part provide details on vehicle parapets and bridge supports with assessments in progress, or which require upgrading or which are under review and may require further detailed assessment.

6.2 Structural Assessment Process

- 6.2.1 The Operating Company shall follow the procedure referred to in Annex 7.6/G of this Part to obtain Technical Approval for structural assessments.
- 6.2.2 Subject to an Order, the Operating Company shall undertake structural assessments to level one to three as agreed with the Director in accordance with the assessment requirements in the *Design Manual for Roads and Bridges*.
- 6.2.3 The Director may, at his discretion and subject to an Order, require the Operating Company to undertake level four and five assessments that require specialist

knowledge and expertise using appropriately experienced assessing engineers. Where appropriate staff are not available from within the Operating Company, the Operating Company shall propose specialist contractors and the rates payable for the prior written consent of the Director.

6.3 Structural Assessments in Progress

- 6.3.1 Subject to an Order, where a structural assessment is in progress at the Commencement of Service Date, the Operating Company shall undertake the completion of the assessment to the level of assessment agreed with the Director.
- 6.3.2 The Operating Company shall inform the Director of any identified assessment that cannot be completed before the end of the Final Annual Period prior to undertaking any work on the assessment. The Director shall decide:
- (i) if the Operating Company is required to undertake the identified assessment, or
 - (ii) if he wishes to make alternative arrangements outwith the Operating Company's arrangements for undertaking the identified assessment.
- 6.3.3 Subject to the requirements in paragraph 6.3.2, the Operating Company shall complete all structural assessments in progress no later than the end of the Final Annual Period. The Operating Company shall not initiate any new assessments that may continue beyond the end of the Final Annual Period.
- 6.3.4 Annex 7.6/H of this Part lists sub-standard Structures with assessments in progress at the start of the first Annual Period or which are under review and may require structural assessment.

7. MANAGEMENT OF SUB-STANDARD STRUCTURES AND STRUCTURES WITH KNOWN DEFECTS

7.1 General

- 7.1.1 The Operating Company shall undertake the management of sub-standard Structures and the management of Structures with known Defects in order to:
- (i) maintain public safety, and
 - (ii) enable sub-standard Structures to remain in service whilst further assessments are carried out and until any replacement or strengthening is completed or the Structure is no longer deemed sub-standard.

These obligations may change during the Contract Period and any additional obligations shall be the subject of an Order.

The Operating Company shall manage sub-standard Structures in accordance with the requirements of the *Design Manual for Roads and Bridges*.

7.2 Interim Measures and Monitoring

- 7.2.1 All Structures that are sub-standard or require monitoring are listed within the structures management function of the Integrated Roads Information System. A summary of sub-standard Structures is also provided in Annex 7.6/I of this Part. Annex 7.6/J of this Part lists Structures with known Defects requiring monitoring which are sub-standard and Annex 7.6/K of this Part lists Structures with known Defects requiring monitoring that are not sub-standard.

- 7.2.2 The interim measures proformas provided in Schedule 6 Part 4 based on those in the *Design Manual for Roads and Bridges* shall be used by the Operating Company in relation to sub-standard Structures or Structures with known defects. Details of the current assessments and monitoring, interim and permanent measures that have been or shall be applied to sub-standard Structures are recorded in the structures management function of the Integrated Roads Information System for each sub-standard Structure.
- 7.2.3 The Operating Company shall be responsible for ensuring that all sub-standard Structures and Structures with known Defects have appropriate assessment ratings, monitoring regimes and agreed interim and planned permanent measures in place.
- 7.2.4 The Operating Company shall review annually each sub-standard Structure and its associated interim measures proforma and each Structure with known Defects. The Operating Company shall undertake appropriate monitoring and maintain interim measures in place until appropriate works are implemented or the Structure is assessed as adequate or has been strengthened or replaced. If, at any time, any Structure is categorised as an immediate risk Structure in accordance with the *Design Manual for Roads and Bridges*, the Operating Company shall inform the Director and shall implement the necessary safety and interim measures immediately.
- 7.2.5 The Operating Company shall submit all proposals and changes, including:
- (i) any new monitoring and interim measures,
 - (ii) amendments to the existing monitoring measures,
 - (iii) where the existing structural assessment rating may no longer be valid and the Structure requires re-assessment in accordance with paragraph 6 of this Part,
 - (iv) strengthening and replacement work, and
 - (v) the cessation of monitoring,
- for the written consent of the Director.

7.3 Strengthening and Replacement

- 7.3.1 The Director shall determine the programme and funding for strengthening and replacement of sub-standard Structures and Structures that are beyond their service life or Structures that require replacement for other reasons.
- 7.3.2 The proposed strengthening and replacement programme is provided in Annex 7.6/L of this Part. The programme is subject to the funding of competing priorities and is controlled by the Director.

Schemes arising from the strengthening and replacement programme are subject to the requirements of paragraphs 5.4 and 5.5 of this Part, which shall be undertaken by the Operating Company.

The Operating Company shall provide such advice as may be requested by the Director to enable him to prioritise this work.

8. ACCESS SYSTEMS

8.1 General

- 8.1.1 The Operating Company's Gantry Manager shall supervise the use of all Access Systems and carry out the duties referred to in this section.
- 8.1.2 Structures listed in Table 7.6.M.1 of Annex 7.6/M of this Part has Access Systems which may be used by the Operating Company to gain access for inspection and maintenance Operations.
- 8.1.3 Structures listed in Table 7.6.M.2 of Annex 7.6/M of this Part has permanent bridge access gantries and or runway beams which are required to remain certified for use throughout the Contract Period.
- 8.1.4 The Operating Company shall be responsible for the inspections, testing, maintenance and operation of any Access Systems, including those listed in Annex 7.6/M of this Part. The Operating Company shall ensure that prior to use, all Access Systems comply in all respects with current regulations and standards including:
- (i) British Standard 6037: Code of practice for the planning, design, installation and use of permanently installed access equipment, or equivalent,
 - (ii) British Standard 5974: Temporary installed suspended scaffolds and access equipment or equivalent,
 - (iii) British Standard EN 1808: Safety requirements on suspended access equipment – design calculations, stability criteria, construction, or equivalent, and
 - (iv) *The Operation and Maintenance of Bridge Access Gantries and Runways. (Second Edition 2007)* published by the Institution of Structural Engineers.
- 8.1.5 The Operating Company shall be responsible for and provide:
- (i) method statements for inspections and testing,
 - (ii) certification, and
 - (iii) bridge maintenance files and health and safety files,
- in relation to all Access systems.
- 8.1.6 Where available, the Director shall provide the Operating Company with operations and maintenance manuals and manufacturers' instructions in relation to Access Systems.
- 8.1.7 The Operating Company shall use of the Access Systems to allow Undertakers to inspect and maintain their plant and equipment where this is fixed to a Structure.
- The Operating Company shall liaise with, supervise and accompany all:
- (i) Statutory Authorities,
 - (ii) Undertakers,
 - (iii) authorised contractors, and
 - (iv) other interested third parties,
- who are using the Access Systems.

8.1.8 The Operating Company shall ensure that routine inspection and testing and periodic electrical inspections and testing of the Access Systems are carried out in accordance with the operations and maintenance manuals. Certificates shall be held on the health and safety file for the work. The Operating Company shall also ensure that the gantry operations and maintenance manual is kept up to date with the following:

- (i) Design and check Certificates for access gantries and runway beams, which shall be signed by a chartered engineer,
- (ii) an electrical installation completion Certificate in relation to any electrical works that are undertaken on the gantry in accordance with British Standard 7671: 1992,
- (iii) periodic electrical inspections and testing carried out on existing installations, and
- (iv) test Certificates for all lifting devices and the system as a whole.

8.2 Construction Design and Management

8.2.1 The CDM Coordinator appointed by the Operating Company shall ensure that a Health and Safety Plan covering all Works or Operations relating to or requiring the use of all Access Systems is prepared.

The Principal Contractor appointed by the Operating Company for any Works or Operations utilising the Access System shall develop the Health and Safety Plan and prepare a full and detailed method statement to cover the specific Site Operations involved.

8.3 Temporary Access Systems

8.3.1 Where a temporary access platform is installed, or equipment supported or attached to the permanent Structure, the Operating Company shall satisfy itself regarding:

- (i) the competence of the Designer and contractor for the design, installation and operation of the temporary Access System and equipment, and
- (ii) ensure that the existing Structure has been assessed and certified as adequate to support all loading conditions resulting from the installation and operation of the temporary Access Systems.

8.3.2 Before any temporary Access System is used, the Operating Company shall ensure that the:

- (i) Design, installation and required certification for the temporary Access System, and
- (ii) the associated operations manual, incorporating all health and safety procedures,

is up to date and in accordance with current regulations and standards.

8.4 General and Principal Inspections of Access Systems

8.4.1 General and Principal inspections shall be carried out on all Access Systems, whether they are gantries or suspended scaffold installations. The inspections shall be reported separately but in the same format to those undertaken on the Structure at two year and six year intervals.

- 8.4.2 The Operating Company shall maintain an inspection regime and register for suspended scaffolding installations. This shall be placed on the health and safety file for the work and in the Structures maintenance manual.
- 8.4.3 For new temporary or permanent access installations, or for existing systems that are brought back into use, the Operating Company shall provide the appropriate Design and check Certificates which shall be placed on the health and safety file for the work. These shall be signed by a chartered civil or structural engineer where they relate to any suspended Access System installation.
- 8.4.4 The Operating Company shall ensure that its management procedures are in place and kept up to date for the operation and maintenance of any Access Systems which are required to be kept in service. Such Access Systems are listed in Annex 7.6/M of this Part. Details of procedures and required staffing levels shall be included in the gantry operations and maintenance manual and this information shall be updated regularly throughout the duration of this Contract.
- 8.4.5 The Operating Company shall ensure that the Gantry Manager and gantry operators receive any training necessary for the management and operation of the existing Access Systems and for any new system that is commissioned. Records of training together with the assessment of the suitability of the selected personnel shall be retained by the Operating Company. The Gantry Manager shall be responsible for the control of gantry operations and for ensuring that operations and maintenance manuals are reviewed at regular intervals and kept up to date.
- 8.4.6 The Operating Company shall ensure that in the event of emergencies or Access System breakdown, a safe means of exiting the Access System is available. Each operational Access System shall include the appropriate safety and first aid equipment.

9. THE TECHNICAL APPROVAL AND DEPARTURE FROM STANDARD PROCESS FOR STRUCTURES

9.1 General

- 9.1.1 The Operating Company shall submit approval in principle forms and applications for departures from standards forms for Structures to the Director for acceptance using the forms provided in Schedule 6 Part 4.
- 9.1.2 Applications for departures from standards shall allow adequate time for consideration by Transport Scotland. Such departures shall be requested prior to their inclusion in the approval in principle form or an addendum to the approval in principle form. Departures from standards which have been consented to by the Director shall be included within the approval in principle submission in accordance with the requirements of Schedule 6 Part 4.
- 9.1.3 No later than 25 Working Days after receipt of the Operating Company's approval in principle submission and departure form standards submission, the Director shall:
- (i) accept the submission in writing, or
 - (ii) reject the submission in writing with reasons, or
 - (iii) request the Operating Company to supply further information within five Working Days.

If the Director requests the Operating Company to supply further information, the minimum period of approval will be extended by five Working Days commencing on receipt of the additional information.

If the Operating Company cannot provide the additional information within five Working Days, it shall contact the Director to agree an alternative timeframe.

If the Approval in Principle submission is rejected by the Director, the period of approval of 25 Working Days shall recommence on receipt of the redrafted submission.

Where the Director is unable for any reason to meet this timescale, he shall notify the Operating Company in writing. The Operating Company shall not be entitled to any additional reimbursement if the Director is unable to meet the timescales referred to.

10. MANAGEMENT AND MAINTENANCE OF STRUCTURES WHERE AGREEMENTS EXIST WITH THIRD PARTIES

- 10.1.1 Agreements exist between the Scottish Ministers, Network Rail and British Waterways. The Operating Company shall familiarise itself with these agreements which may impact upon the management, maintenance and replacement of Structures. Annex 7.6/N of this Part lists Structures within the Unit where agreements exist with third parties and provides a brief description.

11. BRIDGES WITH SIGNED LOW HEADROOM AND THOSE SUBJECT TO BRIDGE STRIKES BY OVERHEIGHT VEHICLES

- 11.1.1 Bridges with clearances below 5.03 metres have signs identifying the maximum safe vehicle height which may pass beneath.

High vehicles are classified as those which:

- (i) cannot pass safely under a bridge with the standard minimum headroom clearance of 5.03 metres, or
- (ii) have a vehicle and load combination greater than 4.95 metres in height, allowing for the minimum safety margin of 0.275 metres.

- 11.1.2 The Operating Company shall implement the requirements of the following documents, as part of its procedures and Incident Response Plans, to deal with bridges strike incidents within the Unit:

- (i) *Response to a Bridge Strike over the Railway – A Protocol for Highway and Road Managers and Bridge Owners, and*
- (ii) *Prevention of Strikes on Bridges over Highways – A Protocol for Highway and Road Managers and Bridge Owners.*

- 11.1.3 Structures with signed low headroom are listed within the structures management function of the Integrated Roads Information System and in Annex 7.6/O of this Part.

- 11.1.4 Structures within the Unit which are subject to frequent bridge strikes, together with the dates of when previous strikes have occurred, are listed within the structures management function of the Integrated Roads Information System and in Annex 7.6/P of this Part.

This is Annex 7.6/A to Schedule 7 Part 6 referred to in the foregoing Agreement between Scottish Ministers and BEAR Scotland Limited.

SCOTTISH MINISTERS' REQUIREMENTS

SCHEDULE 7 PART 6

MANAGEMENT AND MAINTENANCE OF STRUCTURES

ANNEX 7.6/A – Maintenance Schedule Proforma

SCOTTISH MINISTERS' REQUIREMENTS

SCHEDULE 7 PART 6

MANAGEMENT AND MAINTENANCE OF STRUCTURES

ANNEX 7.6/A – Maintenance Schedule Proforma

	Name	Organisation	Signature	Date
Prepared By				
Checked By				
Authorised By				

REVISION STATUS				
REV.	DATE	Revision Details	Checked	Authorised

CONTROLLED DOCUMENT HOLDER	
Ref	Name of Holder
1	
2	
3	
4	
5	
6	
7	
8	
9	
10	

Maintenance Activity Code	Clause No.	Maintenance Activities
RCM 1	6110AR 6112AR 6117AR	Substructure and Superstructure - Vegetation/debris/bird dropping removal and disposal, checking/tightening/replacing of bolts to parapets (to include making good local damage to protective systems).
RCM 2	6110AR 6111AR	Expansion Joints - Cleaning out debris/vegetation/sediment from joints and drainage associated with joint, checking/tightening of bolts securing the joint, checking neoprene or elastomeric material for splitting or detachment, checking cover plates and nosing
RCM 3	6110AR 6112AR	Drainage Systems - Removal of obstructions/vegetation which could reduce capacity of the system, cleaning drainage holes, channels, pipes, drainage outlet manholes, weep pipes. Checking operation of flap valves and greasing if required.
RCM 4	6110AR 6113AR	Parapets and Pedestrian Protection - Checking/ tightening/ replacing of bolts. Cleaning hollow section drain holes. Removal of debris/vegetation/bird droppings. Checking freedom of parapet expansion joint.
RCM 5	6110AR 6114AR	Bearings and Bearing Shelves - Removal of debris/vegetation/bird droppings. Checking freedom of movement of bearings. Cleaning where appropriate greasing of accessible mating surfaces.
RCM 6	6110AR 6111AR 6112AR 6113AR 6114AR 6115AR 6117AR	Structures Over or Conveying Watercourses - As above and including - Removal of debris encrustations/greasing/lubrication of all fittings (in accordance with maintenance manual). Removal and disposal of debris and silt to ensure free flow of water.
RCM 7	6110AR 6116AR 6117AR	Sign Gantries and High Mast Lighting - Holding down assemblies and fixings including cladding to be checked/ tightened/ cleaned/ greased (to include making good local damage to protective systems and replacement of bolts where required). Checking box type structures are water-tight and report leaks & bird entry issues.
RCM 8	6110AR 6117AR	Non-structural Items - Movable parts to be cleaned and greased. Holding down assemblies and fixings including cladding to be checked/tightened (to include making good local damage to protective systems).
RCM 9	6110AR 6112AR 6113AR 6114AR 6115AR 6117AR 6118AR	Underpasses and Culverts used by Pedestrians - Cleaning of ramps, light fittings, ceilings and soffits, mirrors and handrails. Removal of vegetation/sediment on or adjacent to structure which could have a detrimental effect on the function of the structure. Vegetation/debris/bird dropping removal and disposal. Drainage system/gulleys/grates/channels cleared to maintain efficient operation.
RCM 10	6110AR 6112AR 6113AR	Retaining Walls - Removal of vegetation on or adjacent to structure which could have a detrimental effect on the function of the structure.

[illegible]

Route	Total Structures	Structures Remaining	% Structures Complete	Total Maintenance Items	Maintenance Items Complete	Maintenance Items Remaining	% Items Complete	Comments on Items not Completed
A1	6	2	66.67%	20	14	6	70%	
TOTAL	6	2	66.7%	20	14	6	70.0%	

This is Annex 7.6/B to Schedule 7 Part 6 referred to in the foregoing Agreement between Scottish Ministers and BEAR Scotland Limited.

SCOTTISH MINISTERS' REQUIREMENTS

SCHEDULE 7 PART 6

MANAGEMENT AND MAINTENANCE OF STRUCTURES

ANNEX 7.6/B – List of Structures Requiring Principal Inspections

SCOTTISH MINISTERS' REQUIREMENTS

SCHEDULE 7 PART 6

MANAGEMENT AND MAINTENANCE OF STRUCTURES

ANNEX 7.6/B – List of Structures Requiring Principal Inspections

NEXT PRINCIPLE INSPECTION YEAR: 2012		
Structure Reference Number	STRUCTURE NAME	Next Principal Inspection Year
A82 1060 W70	GILLE RUAIDH RA	2012
A82 1100	ATHA	2012
A82 1370 W56	BUNLOIT RB	2012
A82 1380 W13	ACHNAHANNET LA	2012
A82 1380 W20	LENIE COTTAGE LA	2012
A82 1380 W26	LOWER LENIE LA	2012
A82 1380 W32	CRAIG BOGLASHIN S	2012
A82 1400 W63	TEMPLE PIER LA	2012
A82 1450 W56	DUBH ALLT MOR RB	2012
A82 1450 W60	QUARRY LA	2012
A82 1470 W20	KIRKTON NTH WALL LA	2012
A82 1490 W99	FRIARS PLACE WALL RB	2012
A82 305	CULAG FARM	2012
A82 305 W64	CULAG BANK LA	2012
A82 305 W71	CULAG BANK A LA	2012
A82 315	CULVERT 38	2012
A82 325	WADE'S BRIDGE	2012
A82 325 W54	TRIAL BANK LA	2012
A82 335	INVERBEG U/P	2012
A82 345	CAMUS NAN CLAIS	2012
A82 345 W73	RUBHA BAN RB	2012
A82 380 F	TARBET SMITHY F/B 1	2012
A82 380 W12	TARBET 1 RB	2012
A82 380 W13	TARBET 2 RB	2012
A82 380 W17	TARBET ISLE 1	2012
A82 380 W21	TARBET ISLE 2	2012
A82 380 W24	TARBET ISLE WALL 4	2012
A82 380 W43	INVERHOULIN WALL 2	2012
A82 380 W44	INVERHOULIN WALL 3	2012
A82 380 W48	BLAIRANNAICH 1 RB	2012
A82 380 W50	BLAIRANNAICH 2 RB	2012
A82 380 W57	BLAIRANNAICH 3 RB	2012
A82 380 W59	BLAIRANNAICH 4 RB	2012
A82 400 W54	COIRE NAN EACH 1 RB	2012
A82 400 W56	COIRE NAN EACH 2 RB	2012
A82 400 W63	COIRE NAN EACH 3 RB	2012
A82 410 W49	RUBHA BAN RB	2012
A82 570 C55	AUCHRIOCH 1	2012

NEXT PRINCIPLE INSPECTION YEAR: 2012		
Structure Reference Number	STRUCTURE NAME	Next Principal Inspection Year
A82 570 C60	AUCHRIOCH 2	2012
A82 610 W13	BHREAC-LIATH LA	2012
A82 740 W99	LAIRIG EILDE LAY-BY	2012
A82 750	LAIRIG EILDE NEW	2012
A82 750 W1	LAIRIG EILDE VIEWPNT	2012
A82 751	LAIRIG EILDE CANTLVR	2012
A82 770 W78	ALLT-NA-REIGH RA	2012
A82 850 W75	WAR MEMORIAL LA	2012
A82 880	ST BRIDES EPISCOPAL	2012
A82 890	SMITHY	2012
A82 900	ONICH SCHOOL	2012
A82 900 W30	ONICH BAY LB	2012
A82 910 W67	DRUIMM NA BIRLINN 5	2012
A82 910 W71	DRUIMM NA BIRLINN 6	2012
A82 920	CORRYCHURRACHAN S	2012
A82 940	CORRYCHURRACHAN 2	2012
A82 950	BEINN BHAN BURN	2012
A82 970 W30	FT WILLIAM SERV RD	2012
A83 140 W17	SOUTH CRALECKAN 3	2012
A83 150	SANDHOLE	2012
A83 200 C0	LOCHGAIR SCHOOLHOUSE	2012
A83 220 W53	BRACKLEY PARK	2012
A83 220 W56	MID BRACKLEY	2012
A83 220 W62	BRACKLEY SOUTH	2012
A83 220 W64	BRACKLEY VILLA	2012
A83 240 W27	BRAE ROAD	2012
A83 240 W61	SEA VIEW LB	2012
A83 240 W65	KARONGA	2012
A83 240 W88	AUCHNASGIACH LB	2012
A83 240 W99	ATTICHUAN LB	2012
A83 250	ATTICHUAN	2012
A83 250 W9	ALLT NA CRAIG	2012
A83 260 C35	WOODHOUSE	2012
A83 260 W12	BOATHOUSE LB	2012
A83 260 W4	ARDFENAIG	2012
A83 260 W44	BRENFIELD	2012
A83 260 W7	FASCADALE LB	2012
A83 260 W9	TIGH-NA-RUDHA	2012
A83 280 W30	TAYLOR'S BAY	2012
A83 280 W33	TAYLOR'S BAY COTTAGE	2012
A83 280 W64	CREAGAN BEAG	2012
A83 290 W35	MHINIDHE BEAG LAY-BY	2012
A83 290 W38	MHINIDHE BEAG S LB	2012
A83 290 W40	MHINIDHE MOR NORTH	2012
A83 290 W42	MHINIDHE MOR SOUTH	2012
A83 290 W53	ARTILLIGAN NORTH 15	2012
A83 290 W58	ARTILLIGAN NORTH 14	2012
A83 290 W60	ARTILLIGAN NORTH 13	2012

NEXT PRINCIPLE INSPECTION YEAR: 2012		
Structure Reference Number	STRUCTURE NAME	Next Principal Inspection Year
A83 290 W63	ARTILLIGAN NORTH 12	2012
A83 290 W66	ARTILLIGAN NORTH 11	2012
A83 290 W67	ARTILLIGAN NORTH 10	2012
A83 290 W68	ARTILLIGAN NORTH 9	2012
A83 290 W79	ARTILLIGAN NORTH 5	2012
A83 290 W82	ARTILLIGAN NORTH 3	2012
A83 290 W88	ARTILLIGAN NORTH 2	2012
A83 30 W21	TORPEDO RANGE E 1 LB	2012
A83 30 W22	TORPEDO RANGE E 2 LB	2012
A83 310 W78	ALLTMUIC RUAIDH LB	2012
A83 330 W97	ERINES LODGE NORTH	2012
A83 360 W38	BARRHILL	2012
A83 360 W40	SOUTH LODGE	2012
A83 360 W75	BARMORE ROAD LB	2012
A83 360 W81	KERRADALE	2012
A83 360 W89	MAZAGON RA	2012
A83 364 W4	CHURCH OF SCOTLAND	2012
A83 370	CORRANBUIE	2012
A83 380	BARDARAVINE	2012
A83 390	ACHNACARNAN SOUTH	2012
A83 40 W11	LITTLE REST 1	2012
A83 60 W22	REST AND BE THANKFUL	2012
A83 60 W79	BLACK SPOUT	2012
A830 160	SHLATACH RAIL	2012
A830 376 C50	TRAIGH BURN	2012
A830 395 C23	BOURBLACH U/P	2012
A830 395 C35	SEAVIEW CATTLE CREEP	2012
A830 395 W60	DOILEAD BURN CHANNEL	2012
A830 398 F	GLASNACARDOCH F/B	2012
A830 420 W90	MALLAIG STATION RB	2012
A830 80 C4	FASSFERN CREEP	2012
A84 110	ARDCHULLARIE	2012
A84 120	STRATHYRE	2012
A84 130	CREAGAN	2012
A85 300 W34	MEALL BUIDH LB	2012
A85 300 W36	MEALL BUIDH RB	2012
A85 310	ALLT LAIRIG CHEILE	2012
A85 310 W40	LIX RB	2012
A85 340	LUIB BURN	2012
A85 360 W30	AUCHESSAN LA	2012
A85 430 C0	CORRYGHOIL NEW	2012
A85 480 C66	CORRIES	2012
A85 490 C19	INNISCHOINAIN 2	2012
A85 500 W59	LORGAIDH WALL 2	2012
A85 500 W63	LORGAIDH WALL 3	2012
A85 500 W66	LORGAIDH WALL 4	2012
A85 500 W67	LORGAIDH WALL 5 LB	2012
A85 500 W69	LORGAIDH WALL 6	2012

NEXT PRINCIPLE INSPECTION YEAR: 2012		
Structure Reference Number	STRUCTURE NAME	Next Principal Inspection Year
A85 500 W74	LORGAI DH WALL 7 RA	2012
A85 500 W90	LORGAI DH WALL 9 RA	2012
A85 540 W42	CRUACHAN WALL 3 RA	2012
A85 540 W59	CRUACHAN WALL 4 LB	2012
A85 540 W62	CRUACHAN WALL 5 LB	2012
A85 540 W69	CRUACHAN WALL 6 RA	2012
A85 540 W70	CRUACHAN WALL 7 LB	2012
A85 540 W71	CRUACHAN WALL 8 RA	2012
A85 540 W77	CRUACHAN WALL 9 RA	2012
A85 540 W90	CRUACHAN WALL 11 RA	2012
A85 540 W94	CRUACHAN WALL 13 RA	2012
A85 550 W25	CRUACHAN WALL 14 RA	2012
A85 550 W30	CRUACHAN WALL 15 RA	2012
A85 550 W62	CRUACHAN WALL 17 RA	2012
A85 550 W66	CRUACHAN WALL 18 RA	2012
A85 550 W68	CRUACHAN WALL 19 RA	2012
A85 560 W47	BRANDER WALL 1	2012
A85 560 W54	BRANDER WALL 2	2012
A85 660	LUSRAGAN	2012
A86 190 W35	LAGGAN DAM	2012
A86 200 W62	CILLE CHOIRILL	2012
A86 200 W67	CNOC AN EAS RA	2012
A86 200 W68	GLENSPEAN LODGE	2012
A86 80 W4	LOCH LAGGAN HOTEL	2012
A9 1060 C70	LEAULT BURN	2012
A9 1070	KINCRAIG FARM U/P	2012
A9 1070 C1	KINCRAIG HOUSE BURN	2012
A9 1080	ALVIE ESTATE U/P	2012
A9 1090	ALLT AN FHEARNA	2012
A9 1100	ALLT CHRIOCHAI DH	2012
A9 1100 C69	LOCH ALVIE CREEP	2012
A9 1110	BALLINLUIG PEDES U/P	2012
A9 1110 C10	BALLINLUIG BURN	2012
A9 1120	LYNWILG U/P	2012
A9 1260 C35	STRATHDEARN 1	2012
A9 1262 F	MILLENNIUM F/B F1	2012
A9 1356	NORTH KESSOCK U/P	2012
A9 1450 C90	BROOMHILL BURN	2012
A9 1455 C23	KINDEACE BURN NEW	2012
A9 1455 C45	TULLICH BURN NEW	2012
A9 1459 W50	BALNAGOWN NORTH LB	2012
A9 1465 C5	PITMADUTHY BURN	2012
A9 1470 C85	TARLOGIE BURN/CREEP	2012
A9 1600	MOUND SLUICES (NSS)	2012
A9 1625 W80	CULMAILY 1 RB	2012
A9 1700	CRAIGALLACHIE	2012
A9 1775	HELMSDALE NEW RAIL	2012
A9 1785	HELMSDALE RIVER NEW	2012

NEXT PRINCIPLE INSPECTION YEAR: 2012		
Structure Reference Number	STRUCTURE NAME	Next Principal Inspection Year
A9 1900	LATHERON	2012
A9 1960 W62	SCRABSTER APPR'CH RB	2012
A9 1960 W74	SCRABSTER CLETT B LA	2012
A9 1960 W80	SCRABSTER OIL DPT RB	2012
A9 1960 W89	SCRABSTER COTTS 1 LA	2012
A9 1960 W91	SCRABSTER COTTS 2 LA	2012
A9 420 W10	INVER WEST LA	2012
A9 420 W12	INVER EAST RA	2012
A9 420 W44	HERMITAGE ACCESS LB	2012
A9 450 W20	LEDPETTIE LB	2012
A9 450 W95	KINDALLACHAN LB	2012
A9 670 W70	TULACH RB	2012
A9 810 W14	DRUMOCHTER 13 S/B LA	2012
A9 810 W4	DRUMOCHTER 14 S/B LA	2012
A9 880 C47	BHOTIE SOUTH	2012
A9 880 C66	BHOTIE NORTH	2012
A9 900 C75	TRUIM DAM CREEP	2012
A9 930 C72	GLEN TRUIM 3	2012
A99 10	FORSE	2012
A99 30	OCCUMSTER CLYTH BURN	2012
A99 40 C23	OLD MILL	2012
A99 40 W12	BRUAN REDGOE RB	2012

NEXT PRINCIPLE INSPECTION YEAR: 2013		
Structure Reference Number	STRUCTURE NAME	Next Principal Inspection Year
A82 1000	TOMNAHARRY	2013
A82 1010	MHUILINN	2013
A82 1020	CAILLICH	2013
A82 1030	LUNDY	2013
A82 1040	SPEAN	2013
A82 1050	MAIRI	2013
A82 1060	INVERGLOY	2013
A82 1060 W99	ALTRUA LB	2013
A82 1070	ALTRUA	2013
A82 1080	LEITIRI	2013
A82 1095	CORRIEGOUR LODGE NEW	2013
A82 1110	LEAGANN	2013
A82 1120	CHOILICH	2013
A82 1130	CEANNSIDE SIX	2013
A82 1140	CEANNSIDE FOUR	2013
A82 1150	CEANNSIDE THREE	2013
A82 1160	CEANNSIDE 2	2013
A82 1200	INVERGARRY	2013
A82 1220	OICH	2013
A82 1260	FORT AUGUSTUS	2013
A82 1260 C22	BALANTOUL	2013

NEXT PRINCIPLE INSPECTION YEAR: 2013		
Structure Reference Number	STRUCTURE NAME	Next Principal Inspection Year
A82 1290	ALLT A' MHUILINN	2013
A82 1310	INVERMORISTON	2013
A82 1320 W19	HOME FARM 4 RB	2013
A82 1320 W6	HOME FARM 1 RB	2013
A82 1320 W7	HOME FARM 2 LA	2013
A82 1330 W18	ALLT SAIGH 1	2013
A82 1330 W19	ALLT SAIGH 2	2013
A82 1330 W20	ALLT SAIGH 3	2013
A82 1380	FHITHICH	2013
A82 1400	DRUMNADROCHIT	2013
A82 1480 G95	NADICS A12	2013
A82 1520 G78	NADICS A9	2013
A82 210 G30	NADICS C1	2013
A82 342	INVERBEG	2013
A82 345 W10	RUBHA MOR LA	2013
A82 460	DUBH EAS	2013
A82 470	DUBH EAS SOUTH	2013
A82 480	DUBH EAS NORTH	2013
A82 490	ALLT FIONNE GHLLINNES	2013
A82 500	ALLT FIONNE GHLLINNEN	2013
A82 510	EAS EONAN	2013
A82 520	DERRYDARROCH RAIL	2013
A82 560	EUICH RAIL	2013
A82 580	STRATHFILLAN MANSE	2013
A82 580 G94	NADICS C3	2013
A82 590	TYNDRUM	2013
A82 610 C63	AUCH 1	2013
A82 650	ALLT NA H ACHLAISE	2013
A82 670	ALLT MOLACH	2013
A82 680	ALLT NAN GUIBHAS	2013
A82 690	CREAGDHUBH	2013
A82 710	ALLT NA FEADH	2013
A82 710 F	ALLT NA FEADH F/B	2013
A82 730	MEANNARCLACH	2013
A82 760	CHAILLEACH	2013
A82 770	ALLTANRIGH	2013
A82 790	CHANCELLOR	2013
A82 800	ACHTRIOCHTAN	2013
A82 820	ALLT NA MUIDHE	2013
A82 830	ALLT FHIODHAN	2013
A82 840	BALLACHULISH HARBOUR	2013
A82 850	LARROCH RIVER	2013
A82 860	ST JOHNS RECTORY	2013
A82 910	RIGH	2013
A82 960	KIACHNISH	2013
A82 970 G20	NADICS C4	2013
A82 980	NEVIS RIVER	2013
A828 120 C32	APPIN HOUSE	2013

NEXT PRINCIPLE INSPECTION YEAR: 2013		
Structure Reference Number	STRUCTURE NAME	Next Principal Inspection Year
A828 30 C38	ALLT AN DUINE MHOIR	2013
A828 50	BARCALDINE GARDENS	2013
A83 140	LEACANN	2013
A83 50 W61	ROADMANS COTTAGE RA	2013
A83 60 W83	BLACK SPOUT LANDWARD	2013
A83 70 W85	GLASCHOINE LANDWARD	2013
A83 90 W10	CUIL HOUSE RA	2013
A83 90 W23	ALLT NA CRIEGE	2013
A83 90 W91	STRONE POINT	2013
A83 99	SHIRA OLD (NSS)	2013
A830 240 C82	POLNISH BURN NEW	2013
A830 285	POLNISH NEW RAIL	2013
A830 285 C43	SCHOOLHOUSE BURN NEW	2013
A830 285 C51	ARNABOL BURN NEW	2013
A830 301	ALLTA MHAMA NEW	2013
A830 330	BEASDALE BURN NEW	2013
A830 350	BORRODALE BURN NEW	2013
A830 352	BORRODALE U/P	2013
A830 356	BRUNERY BURN	2013
A830 360	LARACHMORE NEW	2013
A830 360 C50	ARISAIG NORTH U/P	2013
A830 360 C51	ARISAIG NORTH BURN	2013
A830 374	CARACH SOUTH U/P	2013
A830 375	ALLT CAM CARACH	2013
A830 376	CARACH NORTH U/P	2013
A830 383	TRAIGH FARM U/P	2013
A830 385	GLENCAIRN FARM U/P	2013
A830 385 C1	GLENCAIRN BURN	2013
A830 387	CROSS FARM U/P	2013
A830 387 C60	KINSADEL U/P	2013
A830 80	FASSFERN	2013
A835 0 G25	NADICS A10	2013
A835 110	BLACK BRIDGE	2013
A835 110 C16	GLASCARNOCH 1	2013
A835 120	TORRAN DHU	2013
A835 130	LEACACHAIN	2013
A835 150	ALLT A BHRAIGHE	2013
A835 160	INVERLAEL	2013
A835 190 G80	NADICS X3	2013
A835 20	KILDUN RAIL	2013
A835 30	USSIE BURN 1 (ARMCO)	2013
A835 30 C11	USSIE BURN 2 (BOX)	2013
A835 50	CONTIN OLD (NSS)	2013
A835 55 C30	BALNAIN	2013
A835 55 G19	NADICS X2	2013
A835 55 W1	CONTIN NSHEB LB	2013
A835 60 C35	ALLT A MHUILINN 1	2013
A835 60 C36	ALLT A MHUILINN 2	2013

NEXT PRINCIPLE INSPECTION YEAR: 2013		
Structure Reference Number	STRUCTURE NAME	Next Principal Inspection Year
A835 60 C83	CREGAN NA CRICHE	2013
A835 60 W15	GARVE WALL 1	2013
A835 60 W25	GARVE WALL 2	2013
A835 70	SILVERBRIDGE OLD SSS	2013
A835 75	ACHNACLERACH	2013
A84 60	KELTY	2013
A84 70	LENY	2013
A84 80	KILMAHOG 1	2013
A84 90	KILMAHOG 2	2013
A84 90 W10	KILMAHOG 3	2013
A85 100	TOFTS	2013
A85 110	DALVRECK	2013
A85 140	LAWERS	2013
A85 150	MILTON	2013
A85 180	TULLYBANNOCHER	2013
A85 190	BOLTACHAN	2013
A85 210	FANK	2013
A85 240	ALLT AN FHIONN	2013
A85 240 W60	LOCH EARN 1	2013
A85 240 W90	LOCH EARN 2	2013
A85 250	GLENTARKEN	2013
A85 250 W15	LOCH EARN 3	2013
A85 260	DERRY WOOD	2013
A85 300 W30	ALLT AN DEABHTAICH	2013
A85 350	LUIB STATION	2013
A85 360	ALLT COIRE CHAORACH	2013
A85 380 G90	NADICS C2	2013
A85 430 W95	TULLICH	2013
A85 480	ORCHY	2013
A85 480 W36	CREAG A CHEOIDH	2013
A85 480 W48	LOCHAWE HOTEL	2013
A85 480 W49	TIGHT LINE	2013
A85 490	INNISCHONAIN RAIL	2013
A85 630	LAKEFIELD RAIL	2013
A85 660 W21	CONNEL WALL 1	2013
A85 90	KEILLOUR	2013
A87 170 W31	TATTENHAM CORNER 1	2013
A87 170 W34	TATTENHAM CORNER 2	2013
A87 170 W49	TATTENHAM CORNER W	2013
A87 190 W15	SHIEL JUNCTION	2013
A87 210 W73	INVERINATE WEST RHS	2013
A87 210 W80	INVERINATE WEST LHS	2013
A87 220 W57	CASTLE CUTTINGS	2013
A87 250 G68	NADICS X1	2013
A87 560	VARRAGIL	2013
A9 1020 C18	TOM CHEIREAG	2013
A9 1020 G15	NADICS A2	2013
A9 1130 G88	VMS AVIEMORE (B9152)	2013

NEXT PRINCIPLE INSPECTION YEAR: 2013		
Structure Reference Number	STRUCTURE NAME	Next Principal Inspection Year
A9 1207 F	SLOCHD SUMMIT 3 F/B	2013
A9 1210	SLOCHD BEAG	2013
A9 1230	FINDHORN	2013
A9 1240	TOMATIN HOUSE U/P	2013
A9 1250	ALLT NA FRITHE	2013
A9 1250 C25	ALLT DUBHAIG	2013
A9 1260	DALMAGARRY	2013
A9 1295 G63	NADICS A5	2013
A9 1340 G40	NADICS A8	2013
A9 1350 G45	NADICS A6	2013
A9 1355	CHARLESTOWN PED U/P	2013
A9 1355 G50	NADICS A11	2013
A9 1355 W25	PLOVER COTTAGE RA	2013
A9 1360 C60	FOULIS	2013
A9 1470 C40	TAIN ST VINCENT U/P	2013
A9 1583	MEIKLE FERRY RAIL	2013
A9 1585	DORNOCH	2013
A9 1587	EVELIX CUTHILL LINKS	2013
A9 1587 W61	COWIE HOUSE LA	2013
A9 1615	FLEET NEW	2013
A9 1625	MOUND NEW RAIL	2013
A9 1680 W91	BRORA ROSSLYN YRD LB	2013
A9 1680 W92	BRORA HIGH STREET RA	2013
A9 1680 W96	SUTHERLAND ARMS LB	2013
A9 1680 W97	BRORA SOUTH BRAE RA	2013
A9 1680 W98	BRORA MEMORIAL LB	2013
A9 1680 W99	BRORA MEMORIAL SQ RA	2013
A9 1695	BRORA RIVER NEW	2013
A9 1720 C24	ALLT GARBH-CHLAIS	2013
A9 1720 W19	KINTRADWELL LODGE RB	2013
A9 1720 W38	KINTRADWELL FARM LA	2013
A9 1730	COLLIEBURN	2013
A9 1730 G90	NADICS X4	2013
A9 1745	ALTNACOU NEW	2013
A9 1755	LOTH RIVER NEW	2013
A9 1755 C73	ALLTEENIE BURN	2013
A9 1755 W70	LOTHMORE RB	2013
A9 1755 W77	LOTH PHONE KIOSK RB	2013
A9 1755 W81	LOTH SCHOOL RB	2013
A9 1760	CULGOWER BURN	2013
A9 1820 C88	ALLT NA HEANG	2013
A9 1830	OUSDALE	2013
A9 1840	ALT BRAIGH NAM MEUR	2013
A9 1840 C7	ALLT SLEIBHT EAN	2013
A9 1840 W81	DUBH CHOILLE 1 LB	2013
A9 1840 W85	DUBH CHOILLE 2 LB	2013
A9 1860 W13	WHITE HOUSE RA	2013
A9 1860 W5	BERRIEDALE HAIRPN RB	2013

NEXT PRINCIPLE INSPECTION YEAR: 2013		
Structure Reference Number	STRUCTURE NAME	Next Principal Inspection Year
A9 1860 W8	BERRIEDALE CMTARY RA	2013
A9 1870	BORGUE	2013
A9 1870 W36	SITHEAN DUBH RB	2013
A9 1870 W46	DUNBEATH CSTL HLL RB	2013
A9 1940 G5	NADICS X5	2013
A9 1950	THURSO RIVER	2013
A9 340 G50	NADICS A1	2013
A9 650 G90	NADICS A7	2013
A9 870	ALLT DUBHAIG	2013
A9 879 F	N OF BALSPORRAN F/B	2013
A9 880	ALLT CHUIRN	2013
A9 890	ALLT NAN CISTEACHAN	2013
A9 891 F	S OF DALWHINNIE F/B	2013
A9 900	ALLT UILLEIM	2013
A9 910	ALLT BHATHAICH	2013
A9 920	AQUEDUCT	2013
A9 930	ALLT CUAICH	2013
A9 940	ALLT GARBH	2013
A9 950 C45	RALIA LODGE	2013
A99 40 G77	NADICS X6	2013

NEXT PRINCIPLE INSPECTION YEAR: 2014		
Structure Reference Number	STRUCTURE NAME	Next Principal Inspection Year
A82 1130 C60	CEANNSIDE FIVE	2014
A82 1160 C1	CEANNSIDE 1	2014
A82 1170	SITHEINN	2014
A82 1180	LAGAIN	2014
A82 1190 C30	SEVENHEADS	2014
A82 1190 C8	NORTH LAGGAN	2014
A82 1460	RUITH	2014
A82 1470	LOCHEND	2014
A82 1480	DOCHFUR	2014
A82 1490 H1	TELFORD STREET HML	2014
A82 1500 H2	SHORE STREET HML	2014
A82 1520 H3	HARBOUR ROAD HML	2014
A82 370	STUCKGOWAN	2014
A82 380	TARBET SMITHY	2014
A82 381 F	TARBET SMITHY F/B 2	2014
A82 382 F	TARBET SMITHY F/B 3	2014
A82 390	INVERUGLAS	2014
A82 400	SLOY TAIL RACE	2014
A82 410	ARDVORLICH NORTH	2014
A82 420	STUCKINDROIN	2014
A82 430	STRATH DUBH-UISAGE S	2014
A82 440	STRATH DUBH-UISAGE N	2014
A82 450 C10	ROSE COTTAGE	2014

NEXT PRINCIPLE INSPECTION YEAR: 2014		
Structure Reference Number	STRUCTURE NAME	Next Principal Inspection Year
A82 600	CLIFTON	2014
A82 600 F	CLIFTON F/B	2014
A82 840 C87	LAROCH PEDEST U/P	2014
A82 870	BALLACHULISH	2014
A82 910 W64	DRUIMM NA BIRLINN 1	2014
A82 910 W68	DRUIMM NA BIRLINN 2	2014
A82 910 W70	DRUIMM NA BIRLINN 3	2014
A82 970	FT WILLIAM ASHBURN	2014
A82 970 C60	FT WILLIAM PEDST U/P	2014
A82 970 W31	FT WILLIAM FORESHORE	2014
A82 970 W50	FT WILLIAM WAVE WALL	2014
A828 60	CREAGAN NEW	2014
A828 90	INVERNAHYLE	2014
A83 100 W43	BUSHANG RA	2014
A83 110 W28	RUDHA NA CRAIGE L/W	2014
A83 140 W15	SOUTH CRALECKAN 1	2014
A83 140 W16	SOUTH CRALECKAN 2	2014
A83 140 W37	POWDER WORKS	2014
A83 140 W99	SANDHOLE LB	2014
A83 160 W67	WOODSIDE LB	2014
A83 160 W80	THE HAVEN LB	2014
A83 160 W82	TIGH CLADICH NORTH	2014
A83 170	CRARAE	2014
A83 180	AUCHGOYLE	2014
A83 190	ASKNISH	2014
A83 20	LOIN WATER	2014
A83 210	TOM BAN	2014
A83 260 C0	ARDFENAIG NEW	2014
A830 30	ANNAT	2014
A830 40	CAMUSNATHA	2014
A830 50	ALLT NA LEATHBHEINN	2014
A830 60	ACHDALIEU	2014
A830 70	ALLT NA FHEIDH	2014
A830 90	CORRYBEG	2014
A835 130 W66	CORRIESHALLOCH 1	2014
A835 130 W91	CORRIESHALLOCH 2	2014
A835 150 C23	GLACKOUR	2014
A835 150 W56	FOICH LODGE RA	2014
A835 170 W34	LECKMELM 1	2014
A835 170 W38	LECKMELM 2	2014
A835 180 W86	GADCAISCEIG RA	2014
A84 30 W5	BRIDGE OF TEITH N	2014
A84 39	OLD ANNET (SSS)	2014
A85 100 W32	ABERCAIRNEY	2014
A85 100 W37	CULTOQUHEY	2014
A85 100 W60	GILMERTON 1	2014
A85 100 W61	GILMERTON 2	2014
A85 100 W63	GILMERTON 3	2014

NEXT PRINCIPLE INSPECTION YEAR: 2014		
Structure Reference Number	STRUCTURE NAME	Next Principal Inspection Year
A85 100 W64	GILMERTON 4	2014
A85 100 W65	GILMERTON 5	2014
A85 100 W90	CRIEFF	2014
A85 120	MONZIEVAIRD	2014
A85 130	CLATHICK	2014
A85 160	COMRIE RAIL	2014
A85 170	LEDNOCK	2014
A85 200	TYNRIOCH RAIL	2014
A85 210 C10	STRUIE	2014
A85 230	ST FILLANS TAILRACE	2014
A85 230 W10	ST FILLANS	2014
A85 260 C75	TWIN CULVERT	2014
A85 290 F	GLEN OGLE F/B	2014
A85 380 W40	LOCH DOCHART EAST	2014
A85 400	CRNLARICH STN BURN	2014
A85 640	FEARNOCH	2014
A85 70	LOCHTY	2014
A85 80	METHVEN	2014
A86 30	AULT LAURIE	2014
A86 40 C93	CLUNY	2014
A86 60	LAGGAN	2014
A86 70	STRATHMASHIE	2014
A87 10	ALDERNAIG	2014
A87 20	ACHA LUACHRIACH	2014
A87 250	NOSTIE	2014
A87 260	BALMACARA NEW	2014
A87 30	DAINGEAN	2014
A87 330	ASHAIG	2014
A87 340	BUNAN	2014
A87 390	MHUILLIN NEW	2014
A87 40	BHOIRA	2014
A87 410	FEARNA NEW	2014
A87 430	LUIB	2014
A87 50	GARBH DHOIRE	2014
A87 500	SLIGACHAN	2014
A87 60	LOYNE	2014
A87 640	HINNISDAL	2014
A87 650	ABHAINN BHAL	2014
A87 660	CONON (UIG)	2014
A87 670	RHA	2014
A87 70	MORISTON	2014
A889 10	DROCHAID A'BHACAIN	2014
A889 30	DALWHINNIE RAIL	2014
A9 1200	BADDENGORM	2014
A9 1220	SOILSHAN U/P	2014
A9 1280	LAIRGANDOUR U/P	2014
A9 1291	DAVIOT OLD (NSS)	2014
A9 1300	INSHES O/B	2014

NEXT PRINCIPLE INSPECTION YEAR: 2014		
Structure Reference Number	STRUCTURE NAME	Next Principal Inspection Year
A9 1330	RAIGMORE NAIRN RAIL	2014
A9 1340	RAIGMORE PERTH RAIL	2014
A9 1350 H10V	NORTH KESSOCK CCTV	2014
A9 1360	CROMARTY	2014
A9 1450 C30	ACHNAGARRON	2014
A9 1450 C60	STONEFIELD BURN	2014
A9 1455	BROOMHILL U/P	2014
A9 1470	HILTON NEW	2014
A9 1625 W76	KIRKTON FARM RB	2014
A9 1640	CULMAILY NEW	2014
A9 1640 C20	ALLT DOMHAIN	2014
A9 1640 W19	SMITHY HOUSE LA	2014
A9 1660	GOLSPIE BIG BURN NEW	2014
A9 1710	CLYNEMILTON BURN	2014
A9 1720	KINTRADWELL BURN	2014
A9 1790 W20	HELMSDALE BRMHILL LA	2014
A9 1790 W30	CLASHNARROW LA	2014
A9 1809	BROKEN BURN (SSS)	2014
A9 1810 W91	ORD WALL 3 RB	2014
A9 1820	ORD BURN OLD (SSS)	2014
A9 1820 C0	ORD BURN NEW	2014
A9 1820 W3	ORD WALL 4 RB	2014
A9 1850	BERRIEDALE LANGWELL	2014
A9 1860	BERRIEDALE WATER	2014
A9 1910	RANGAG	2014
A9 1920	TACHER	2014
A9 1920 W86	CLASHGAL RA	2014
A9 1940	GEORGEMAS JUNCT RAIL	2014
A9 1940 C34	SORDALE CATTLE CREEP	2014
A9 1940 C36	ACHINGILLS	2014
A9 1940 C72	STAINLAND	2014
A9 1960	BURNSIDE BURN	2014
A9 1960 W61	SCRABSTER HOUSE LA	2014
A9 340 G67	VMS/D8 INVERALMOND	2014
A9 360	SHOCHIE	2014
A9 370	ORDIE	2014
A9 470 C41	WESTER BALLINLUIG	2014
A9 560	CRAIGHULAN	2014
A9 580	TYNATIED (BURN B)	2014
A9 590	KILLIECRANKIE VIA NB	2014
A9 600	KILLIECRANKIE VIA SB	2014
A9 610	EACHAINN (BURN C)	2014
A9 620	OLD FASKALLY U/P	2014
A9 640	ALLT GIRNAIG	2014
A9 650	GLEN GIRNAIG U/P	2014
A9 660	ALLT CHLUAIN	2014
A9 670	ESSANGAL	2014
A9 680	ALLT BHAIC	2014

NEXT PRINCIPLE INSPECTION YEAR: 2014		
Structure Reference Number	STRUCTURE NAME	Next Principal Inspection Year
A9 690	PITALDONICH	2014
A9 700	PITAGOWAN ROAD	2014
A9 720	ALLT A'CROMBAIDH	2014
A9 730	CLUNES BURN	2014
A9 740	ALLT CRAM BHRUTHAIH	2014
A9 750	DALNAMEIN	2014
A9 760	ALLT GEILLEIDH	2014
A9 760 C20	CARN NA SAIDHE N/B	2014
A9 760 C21	CARN NA SAIDHE S/B	2014
A9 790	EDENDON WATER	2014
A9 790 W7	DALNACARDOCH 6 LA	2014
A9 800	ALLT AN STALCAIR NB	2014
A9 800 W0	DALNACARDOCH 5 RA	2014
A9 800 W4	DALNACARDOCH 4 LB	2014
A9 810	ALLT AN STALCAIR SB	2014
A9 810 W28	DALNACARDOCH 1 LA	2014
A9 810 W66	DALNACARDOCH 2 LA	2014
A9 810 W89	DALNACARDOCH 3 LA	2014
A9 820	ALLT AN BHATHAICH NB	2014
A9 830	ALLT AN BHATHAICH SB	2014
A9 840	ALLT CHOARACH MOR	2014
A9 840 W82	DALNASPIDAL 1 RA	2014
A9 840 W91	DALNASPIDAL 2 RA	2014
A9 840 W99	DALNASPIDAL 3 RA	2014
A9 850	ALLT COIRE MHIC SITH	2014
A9 850 W77	DRUMOCHTER 1 RA	2014
A9 860	ALLT A'CHAORRUINN	2014
A9 910 C45	LOCH ERICHT CREEP	2014
A9 950	ALLT NA CEARDAICH	2014
A9 950 C51	GLENTRUIM CREEP	2014
A9 950 C75	RALIA CREEP	2014
A9 960	NUIDE CATTLE CREEP	2014
A9 970	INVERTON	2014
A9 980	KNAPPACH U/P	2014

NEXT PRINCIPLE INSPECTION YEAR: 2015		
Structure Reference Number	STRUCTURE NAME	Next Principal Inspection Year
A82 1000 G30	VMS/C5 FORT WILLIAM	2015
A82 1030 W94	FERGUSON'S DEPOT LB	2015
A82 1030 W99	SPEAN LODGE LB	2015
A82 1080 W30	LOCH LOCHYSIDE 1	2015
A82 1080 W53	LOCH LOCHYSIDE 2	2015
A82 1080 W72	LOCH LOCHYSIDE 3	2015
A82 1080 W81	LOCH LOCHYSIDE 4	2015
A82 1080 W95	LOCH LOCHYSIDE 5	2015
A82 1095 W15	LOCH LOCHYSIDE 6	2015

NEXT PRINCIPLE INSPECTION YEAR: 2015		
Structure Reference Number	STRUCTURE NAME	Next Principal Inspection Year
A82 1095 W24	LOCH LOCHYSIDE 7	2015
A82 1210	GHLEANNAIN	2015
A82 1240	UANAGAN	2015
A82 1270	BHROCHAIN	2015
A82 1370	EIREIGE	2015
A82 1420	FHEARCHAIR	2015
A82 1430	FOITHANEAN	2015
A82 1440	BRACHLA	2015
A82 1450	KILLIANAN	2015
A82 210 C35	CULVERT 16	2015
A82 210 F	STONEYMOLLAN F/B	2015
A82 240	FRUIN OLD (SSS)	2015
A82 242	FRUIN NEW	2015
A82 250	ALDYALLAN	2015
A82 250 W40	ALLT A'GHULLIANN LA	2015
A82 265 C67	ROSELEA	2015
A82 265 W46	BANDRY LA	2015
A82 265 W66	ALDOCHLAY ROCK BERM	2015
A82 295 W64	ROCK BERM 1 LA	2015
A82 295 W76	ROCK BERM 2 LA	2015
A82 315 W78	ROCK BERM 3 LA	2015
A82 325 W37	ROCK BERM 4 LA	2015
A82 325 W70	ROCK BERM 5 LA	2015
A82 380 W15	TARBET-TARBET ISLE	2015
A82 380 W23	BY TARBET ISLE	2015
A82 380 W27	BY TARBET ISLE 01	2015
A82 380 W29	BY TARBET ISLE 03	2015
A82 380 W30	BY TARBET ISLE 04	2015
A82 380 W42	INVERHOULIN WALL 1	2015
A82 380 W6	TARBET GARAGE RB	2015
A82 380 W76	KENMORE WALL 2	2015
A82 380 W87	KENMORE WALL 3	2015
A82 400 W39	BELOW COIRE NAN EACH	2015
A82 400 W43	CREAG AN ARNAIN RB	2015
A82 400 W80	TOM NA H-INNSE RB	2015
A82 410 W58	PULPIT ROCK RB	2015
A82 410 W60	PULPIT ROCK 1 LA	2015
A82 410 W69	PULPIT ROCK 2 RB	2015
A82 423 F	ARDLUI F/B	2015
A82 520 C15	WEST HIGHLAND WAY	2015
A82 600 C10	CLIFTON	2015
A82 610	ALLT COIRE CHAILEIN	2015
A82 640	TULLA	2015
A82 721 C61	ALLT COIRE RAINEACH	2015
A82 721 W68	COFFIN CAIRN RB	2015
A82 721 W92	MEANNARCLACH WALL RB	2015
A82 860 W34	CHOINNEICH VIEW RB	2015
A82 860 W49	CRAIGRANNOCH HOUSE	2015

NEXT PRINCIPLE INSPECTION YEAR: 2015		
Structure Reference Number	STRUCTURE NAME	Next Principal Inspection Year
A82 985	AN AIRD (ASS)	2015
A828 110	KINLOCHLAICH	2015
A828 140	DALNATRAT	2015
A828 150	DUROR	2015
A828 160	LAGNAHA	2015
A828 170	KENTALLEN STATION	2015
A828 170 W10	SGEIR A CHRIDHE	2015
A828 170 W92	CRAIGLINNHE	2015
A828 40	BARCALDINE HOME FARM	2015
A83 10 W68	ARROCHAR WALL 1	2015
A83 120	DOUGLAS WATER	2015
A83 130 W57	NORTH CRALECKAN	2015
A83 20 W43	TOM'S WALL LB	2015
A83 20 W55	ARDNAGEL	2015
A83 200 W23	KAMES COTTAGE NORTH	2015
A83 200 W24	KAMES COTTAGE S LB	2015
A83 200 W76	BLUE ROCK	2015
A83 220	CORRAN	2015
A83 221 F	CORRAN F/B	2015
A83 30	TORPEDO RANGE	2015
A83 30 W24	TORPEDO RANGE W 1 LB	2015
A83 30 W25	TORPEDO RANGE W 2 LB	2015
A83 30 W26	TORPEDO RANGE W 3 LB	2015
A83 30 W31	ARDGARTAN NORTH LB	2015
A83 30 W33	ARDGARTAN LB	2015
A83 40	LITTLE REST	2015
A83 90 C0	CLACHAN BEAG SOUTH	2015
A83 90 W11	CUIL HOUSE S 1 LB	2015
A83 90 W13	ARDGENAVAN N 1 LB	2015
A83 90 W15	ARDGENAVAN N 2 LB	2015
A83 90 W16	ARDGENAVAN LB	2015
A83 90 W17	ARDGENAVAN S 1 LB	2015
A83 90 W25	ARDGENAVAN S 2 LB	2015
A83 90 W31	DRISHAIG NORTH LB	2015
A83 90 W32	DRISHAIG SOUTH LB	2015
A83 90 W6	CUIL HOUSE NORTH	2015
A830 10	LOCHY RIVER NEW	2015
A830 10 C90	CAOL JUNCTION WEST	2015
A830 150	DHUIBH	2015
A830 170	UTHA	2015
A830 180	DEARG	2015
A830 190	GARBH	2015
A830 200	RANOCHAN	2015
A830 210	ARIENISKILL RAIL	2015
A830 220	CRICHE	2015
A830 230	ARIENISKILL	2015
A830 240	MAODAIL	2015
A830 240 C37	ALLT NA CRICHE	2015

NEXT PRINCIPLE INSPECTION YEAR: 2015		
Structure Reference Number	STRUCTURE NAME	Next Principal Inspection Year
A835 100	INCHBAE	2015
A835 140	CHUMHAINN	2015
A835 90	GARBAT	2015
A835 90 C19	ALLT RIABHACH	2015
A835 90 C42	H-INNESE-DROIGHINN	2015
A835 90 C51	ALLT AN EICH MHAIRBH	2015
A84 100 C90	GOBLACH	2015
A84 100 W10	ST BRIDES CHAPEL	2015
A84 100 W57	BEINN BHREAC 1	2015
A84 100 W75	BEINN BHREAC 4	2015
A84 110 C20	RUNACRAIG 1	2015
A84 110 C25	RUNACRAIG 2	2015
A84 110 C95	IMMERVOULIN	2015
A84 130 W30	GABION RA	2015
A84 135	BALQUHIDDER ROAD	2015
A84 137	BALQUHIDDER STATION	2015
A84 90 W0	KILMAHOG 1	2015
A84 90 W15	PASS HOUSE LB	2015
A84 90 W5	KILMAHOG 2	2015
A84 90 W60	PASS OF LENY	2015
A85 300 C65	LOCHAN LAIRIG CHEILE	2015
A85 300 C75	GLENOGLE COTTAGES	2015
A85 300 W15	ALLT AN SPUT DHUIBH	2015
A85 300 W55	GLEN OGLEHEAD (S)	2015
A85 300 W70	ALLT LAIRIG CHEILE S	2015
A85 300 W80	ALLT LAIRIG CHEILE N	2015
A85 340 C85	SUIE LODGE	2015
A85 370 C35	IUBHAIR	2015
A85 380	BENMORE	2015
A85 380 W45	LOCH DOCHART WEST	2015
A85 550	BRANDER VIADUCT	2015
A85 550 W54	CRUACHAN WALL 16	2015
A85 560	ALLT BRANDER	2015
A85 570	CRUINACHE NEW	2015
A85 610	AIRDS RAIL	2015
A85 620	AIRDS	2015
A85 670	SAULMORE	2015
A85 680	BLACK LYNN	2015
A87 100	LUNDIE	2015
A87 110	LUNDIE COTTAGE	2015
A87 180	MALAGAN	2015
A87 210	CLACHAN DUICH	2015
A87 220	AN LETH-ALLT	2015
A87 270 G45	NADICS X8	2015
A87 290 G46	NADICS X9	2015
A87 290 G52	NADICS X10	2015
A87 320	LUSA NEW	2015
A87 350	LOINN BHAINN NEW	2015

NEXT PRINCIPLE INSPECTION YEAR: 2015		
Structure Reference Number	STRUCTURE NAME	Next Principal Inspection Year
A87 350 C20	SKULAMUS	2015
A87 370	BIDEICH NEW	2015
A87 380	HARRAPOOL	2015
A87 400	BROADFORD	2015
A87 409	FEARNA OLD (LAY-BY)	2015
A87 420	STROLLAMUS	2015
A87 440	LOCH AINORT	2015
A87 450	ABHAINN CEANN	2015
A87 610	HAULTIN	2015
A87 80	FHEARCHAIR	2015
A87 90	PEATHRAIN	2015
A887 0 C65	BUACHAILLEAN	2015
A887 10	LEVISHIE	2015
A887 120	ALLT DUBH	2015
A887 120 C73	ALLT THOMAS	2015
A887 140	ALLT A' CHAISE	2015
A887 150	ALLT A COIRE BHUIDHE	2015
A887 180	ALLT AN EOIN	2015
A887 180 W55	MACKENZIE'S CAIRN	2015
A887 190	CEANNACROC	2015
A887 20	CEANN AN ACHADH	2015
A887 30	CAOCHAN NA MUIC	2015
A887 40	BHLARADH	2015
A887 50	ALLT LARAIRIDH	2015
A887 50 C48	ALLT A'CHOIRE BHUIDE	2015
A887 50 C64	ALLT RUADH	2015
A887 50 C70	TOM NA CROICHE	2015
A887 80	LAGAIN BHAIN	2015
A889 20	DALWHINNIE	2015
A889 40	ALLT BREAKACHY	2015
A889 50	LAGG (CUBHAIGE)	2015
A9 1010	KINGUSSIE RAIL	2015
A9 1020	KERROW	2015
A9 1030	CHAPELPARK U/P	2015
A9 1150 C87	MILTON SHEEP CREEP	2015
A9 1150 C95	STEALLAN DUBH	2015
A9 1160	MILTON CARAVAN SITE	2015
A9 1162	HIGH BURNSIDE U/P	2015
A9 1170	GRANISH U/P	2015
A9 1170 C22	AVIELOCHAN 3	2015
A9 1210 C45	SLOCHD MOR 2	2015
A9 1210 C46	SLOCHD MOR 3	2015
A9 1250 C50	INVEREEN U/P	2015
A9 1260 C65	STRATHDEARN 2	2015
A9 1270	MOY RAIL	2015
A9 1270 C33	ALLT NA SLANAICH	2015
A9 1270 C41	ALLT CREAG BHETHIN 1	2015
A9 1270 C43	ALLT CREAG BHETHIN 2	2015

NEXT PRINCIPLE INSPECTION YEAR: 2015		
Structure Reference Number	STRUCTURE NAME	Next Principal Inspection Year
A9 1290	DAVIOT NEW	2015
A9 1295	MATTAR	2015
A9 1310	RAIGMORE SOUTH	2015
A9 1320	RAIGMORE NORTH	2015
A9 1340 C50	MILLBURN	2015
A9 1590	EVELIX NEW	2015
A9 1590 C54	SKELBO BURN	2015
A9 1590 W36	ACHAVANDRA MUIR RB	2015
A9 1590 W43	SKELBO MUIR RB	2015
A9 1590 W68	FOUR PARKS BALVRD RB	2015
A9 1590 W74	CAMBUSAVIE HSPTAL RB	2015
A9 1590 W80	CAMBUSAVIE RAIL RB	2015
A9 1630	CULMAILY OLD (ASS)	2015
A9 1650 W75	GOLSPIE CHURCHYRD LA	2015
A9 1800 C95	ALLT BRISTE NORTH	2015
A9 1810	ALLT BRISTE NTH U/P	2015
A9 1810 W85	ORD WALL 2 NEW RB	2015
A9 1820 C30	ALLT AN FUDHAIR NEW	2015
A9 1890	LATHERONWHEEL	2015
A9 1900 C88	LOCHEND	2015
A9 420	INVER MILL LADE	2015
A9 470 C16	BALLINLUIG PEDES U/P	2015
A9 500	LOCH BROOM BURN	2015
A9 500 C4	PITCASTLE BURN	2015
A9 500 C74	EASTHAUGH FARM U/P	2015
A9 580 W36	KILLIECRANKIE D/H LB	2015
A9 580 W53	KILLIECRANKIE GAB RA	2015
A9 580 W82	KILLIECRANKIE C/R CB	2015
A9 580 W83	KILLIECRANKIE U/H RA	2015
A9 620 C5	TROOPERS (BURN D)	2015
A9 840 C25	ALLT CHOARACH BEAG	2015
A9 920 C57	DALWHINNIE DIST 1	2015
A9 940 C28	GARBH NORTH 2	2015
A9 990	RUTHVEN ROAD	2015
A99 10 W44	REMEGGY RB	2015
A99 40 C89	HEMPRIGGS NORTH	2015
A99 40 W34	LANGSTANE 1 RB	2015
A99 40 W37	LANGSTANE 2 RB	2015
A9S 1310 W10	RAIGMORE LA	2015

NEXT PRINCIPLE INSPECTION YEAR: 2016		
Structure Reference Number	STRUCTURE NAME	Next Principal Inspection Year
A82 1011 F	ALLT NA MHULIN BURN - NEW	2016
A82 1020 F	ALLT NA CAILLICH BURN	2016
A82 1030 F	RIVER LUNDY	2016
A82 1060 C55	EACHRAIN	2016
A82 1060 C84	GILLE RUaidh 2	2016
A82 1280	UISGE	2016
A82 1300	PORTCLAIR	2016
A82 1320	COINNEAG	2016
A82 1330	ALLT SAIGH	2016
A82 1340	WATERFALL	2016
A82 1350	GROTAIG	2016
A82 1360	TYNEHERRICK	2016
A82 1400 C26	DRUMBUIE	2016
A82 1450 W67	WELLINGTON LAYBY	2016
A82 1500	FRIARS	2016
A82 1500 W72	GEORGE STREET LB	2016
A82 1500 W79	SAFEWAY RB	2016
A82 1500 W97	SUBWAY WALLS	2016
A82 1510	INNES STREET SUBWAY	2016
A82 1520 W11	KWIK FIT RB	2016
A82 1520 W6	BURNETTS BAKERY LB	2016
A82 285	LUSS WATER	2016
A82 295 F	LUSS TIMBER F/B	2016
A82 450	INVERARNAN	2016
A82 500 W90	DERRYDARROCH RB	2016
A82 520 C40	S OF KEILATOR 1 NEW	2016
A82 520 C50	S OF KEILATOR 3	2016
A82 520 C60	KEILATOR SHEEP CREEP	2016
A82 550	HERIVE BURN	2016
A82 550 C90	EWICH	2016
A82 910 W63	DRUIMM NA BIRLINN 4	2016
A82 910 W72	DRUIMM NA BIRLINN 7	2016
A82 910 W74	DRUIMM NA BIRLINN 8	2016
A82 910 W77	DRUIMM NA BIRLINN 9	2016
A82 910 W83	DRUIMM NA BIRLINN 10	2016
A82 989	BASE CAMP OLD RAIL	2016
A82 990	BASE CAMP NEW RAIL	2016
A828 120	ACHOSREGAN	2016
A828 120 C88	BOUNDARY	2016
A828 120 W46	SOUTH POLANACH	2016
A828 150 W11	DUROR POST OFFICE	2016
A828 180	BALLACHULISH HOSPTAL	2016
A828 190	BALLACHULISH HOUSE	2016
A828 190 W30	BALLACHULISH HOTEL	2016
A828 190 W41	BRIDGE PIER LEFT	2016
A828 190 W47	BRIDGE PIER EAST	2016
A828 35	ACHACHA	2016
A828 90 C17	ACHNACONA CROFT	2016

NEXT PRINCIPLE INSPECTION YEAR: 2016		
Structure Reference Number	STRUCTURE NAME	Next Principal Inspection Year
A83 100	SHIRA NEW	2016
A83 100 W35	SALMON DRAUGHT COT 1	2016
A83 100 W42	SALMON DRAUGHT COT 2	2016
A83 110	ARAY	2016
A83 110 W24	LOCHFYNE HOTEL NORTH	2016
A83 110 W40	NORTH CROMALT	2016
A83 110 W42	SOUTH CROMALT	2016
A83 130	AUCHENDRAIN	2016
A83 160	WHITEBRIDGE	2016
A83 160 W86	TIGH CLADICH S LB	2016
A83 280	INVERNEILL NEW	2016
A83 290	STRONACHULLIN	2016
A83 290 W94	ARTILLIGAN NORTH 1	2016
A83 300	ARTILLIGAN	2016
A83 300 W19	ARTILLIGAN SOUTH	2016
A83 310	ARTILLIGAN COTTAGE	2016
A83 320	ALLT MUIC RUAIDH OLD	2016
A83 320 C0	ALLT MUIC RUAIDH NEW	2016
A83 330	ERINES	2016
A83 340	ERINES SOUTH LODGE	2016
A83 40 W56	LITTLE REST 2	2016
A83 50	CROE WATER	2016
A83 60	COBBLER	2016
A83 60 W76	EASAN DUBH SOUTH LB	2016
A83 70	KINGLAS	2016
A83 70 W83	UPPER GLASCHOINE STH	2016
A83 70 W84	UPPER GLASCHOINE NTH	2016
A83 80	FYNE	2016
A830 140	CHALLUIM	2016
A830 310 C56	LOCH NAN UAMH 3	2016
A830 395	MORAR RIVER NEW	2016
A830 395 C65	GLASNACARDOCH BURN	2016
A830 395 W76	GLASNACARDOCH BAY LB	2016
A830 395 W87	MALLAIG SEA WALL LB	2016
A830 420	GLEN DARY ACCESS	2016
A830 420 W9	GLENDARY SEA WALL LB	2016
A830 90 W55	KINLOCHEIL	2016
A835 0 C97	CONON BRAE	2016
A835 0 W95	CONON BRAE CASCADE	2016
A835 10	CONON	2016
A835 75 C62	A'BHOTHAIN DUIBH	2016
A835 75 C70	STRATHGARVE FOREST 1	2016
A835 75 C94	STRATHGARVE FOREST 3	2016
A835 75 W7	ACHNACLERACH LA	2016
A835 80	BEALLACH	2016
A835 80 C24	AN CABAR	2016
A84 10	DRIP	2016
A84 100	ANNIE BURN	2016

NEXT PRINCIPLE INSPECTION YEAR: 2016		
Structure Reference Number	STRUCTURE NAME	Next Principal Inspection Year
A84 100 W65	BEINN BHREAC 2	2016
A84 100 W70	BEINN BHREAC 3	2016
A84 110 W45	CEANN MOR	2016
A84 110 W47	RUNACRAIG GABION 1	2016
A84 110 W5	CREAG AN T-STRUITH	2016
A84 110 W50	RUNACRAIG GABION 2	2016
A84 110 W52	RUNACRAIG GABION 3	2016
A84 120 C65	STRATHYRE	2016
A84 140 W5	KENDRUM	2016
A84 30	TEITH	2016
A84 90 C35	STELL BURN	2016
A85 100 C98	ARDVRECK U/P	2016
A85 270	DALKENNETH	2016
A85 290	GLEN OGLE	2016
A85 300	OGLE	2016
A85 320	ARDCHYLE	2016
A85 330	LEDCHARRY	2016
A85 370	IMMERDHU	2016
A85 390	ALLT COIRE ARDRAIN	2016
A85 410 W51	RIVER LOCHY 1	2016
A85 410 W60	RIVER LOCHY 3	2016
A85 430 C55	ALLT FHUARAN	2016
A85 440	DUNORCHY	2016
A85 450	DALMALLY HOTEL	2016
A85 460	KINCHRACKINE	2016
A85 470	KINCHRACKINE WEST	2016
A85 480 W93	INNISCHOINNAIN E LB	2016
A85 490 C38	INNISCHOINNAIN 3	2016
A85 500 W11	LORGAIDH WALL 1	2016
A85 500 W84	LORGAIDH WALL 8	2016
A85 510	CRUACHAN VIADUCT	2016
A85 510 C3	CRUACHAN VIADUCT 1	2016
A85 510 W9	CRUACHAN VIADUCT 1	2016
A85 510 W92	CRUACHAN POWER STN	2016
A85 510 W99	CRUACHAN POWER STN 1	2016
A85 530	FALLS OF CRUACHAN	2016
A85 540	FALLS OF CRUACHAN W	2016
A85 540 W22	CRUACHAN WALL 1	2016
A85 540 W82	CRUACHAN WALL 10	2016
A85 540 W93	CRUACHAN WALL 12	2016
A85 560 W59	BRANDER WALL 3	2016
A85 560 W73	BRANDER WALL 4	2016
A85 580	BRIDGE OF AWE	2016
A85 600	TAYNUILT HOTEL	2016
A85 650 C9	CUMADALLOCH	2016
A85 660 W18	CNOC ARUAN	2016
A85 670 W84	STAFFORD ST SEA WALL	2016
A85 670 W87	ESPLANADE SEA WALL	2016

NEXT PRINCIPLE INSPECTION YEAR: 2016		
Structure Reference Number	STRUCTURE NAME	Next Principal Inspection Year
A85 670 W93	CATHEDRAL ALBANY TER	2016
A85 670 W97	GEORGE ST SEA WALL	2016
A85 680 G35	VMS/C6 OBAN	2016
A86 110 C69	ALLT NAN CLAR	2016
A86 111	ALLT A COIRE ARDHAIR	2016
A86 180	CLACHAIG	2016
A86 190	ALLT A' CHAORAINN	2016
A86 20	GYNACK	2016
A86 200	DAMH	2016
A86 200 W65	CRUINNICHIDH	2016
A86 210	ROY	2016
A86 210 C68	DRUIMANDONICH	2016
A86 40	CALDER	2016
A86 40 C83	ALLT A'GHAILL	2016
A86 40 W75	AUCHMORE 2	2016
A86 40 W76	AUCHMORE 3	2016
A86 50	MILL HOUSE BURN	2016
A86 70 C82	PATTACK	2016
A86 80	KINLOCH LAGGAN	2016
A86 80 C39	ALLT NA CLAISE	2016
A86 80 C64	ALLT MEAL DAMH	2016
A87 120	ALLT COIRE LAIR	2016
A87 130	ALLT CHOIRE A'CHAIT	2016
A87 140	AN CAORANN MOR	2016
A87 150	AN CAORANN BEAG	2016
A87 160	COIRE THOLL BHRUACH	2016
A87 160 C23	DOIREACH WEST 1	2016
A87 160 C25	DOIREACH WEST 2	2016
A87 160 C33	SHIEL TUNNEL 3	2016
A87 160 C43	SUTHERLANDS CNR EAST	2016
A87 160 C50	ALLT AN FEARNA	2016
A87 160 C53	SHIEL RIVER HEAD 1	2016
A87 160 C57	SHIEL RIVER HEAD 3	2016
A87 160 C64	ALLT COIRE MHIC-TIRE	2016
A87 160 C67	SAILEAG	2016
A87 160 C69	CREAGAN LUIB EORMA	2016
A87 160 C70	ACH' A' MHARC OLAICH	2016
A87 160 C74	BEALACH AN LAPAIN 1	2016
A87 160 C76	BEALACH AN LAPAIN 2	2016
A87 160 C81	LEAC DUBH 3	2016
A87 235	DORNIE SUBWAY NEW	2016
A87 245	DORNIE NEW	2016
A87 270	KYLE STATION RAIL	2016
A87 280	CARRICH	2016
A87 300	ALLT ANAVIG	2016
A87 310	ALLT AN DARAICH	2016
A87 410 W65	STROLLAMUS LA	2016
A87 430 C11	LUIB CREEP	2016

NEXT PRINCIPLE INSPECTION YEAR: 2016		
Structure Reference Number	STRUCTURE NAME	Next Principal Inspection Year
A87 460	BRUADARAN	2016
A87 470	ALLT MHIC MHOREIN	2016
A87 480	TORRA-MICHAIG	2016
A87 480 W38	SCONSER 1	2016
A87 540	LON CHAORACH	2016
A87 540 W79	LON CHAORACH LB	2016
A87 550	LON NA H-AIRIGH	2016
A87 550 W19	LON CREAG A CHAIT	2016
A87 550 W75	LON CREAG A CHAIT 2	2016
A87 560 W67	GLENVARRAGIL HOUSE	2016
A87 570	ALLT TOTA THAOIG	2016
A87 570 C42	LON NA H'ATHA	2016
A87 570 C54	LON NAN SLUGAN	2016
A87 570 C9	BUCHANAN'S BURN	2016
A87 570 W30	VIEWFIELD HOTEL	2016
A87 570 W49	DUNVEGAN ROAD	2016
A87 60 G10	VMS/X7 BUN LOYNE	2016
A887 100	ALLT NA H-INNSE BEAG	2016
A887 110	ALLT NA H-INNSE MOR	2016
A887 160	ALLT NA CRICHE	2016
A887 170	ALLT A' GHOIRTEIN	2016
A887 170 C86	ALLT AN EOIN EAST	2016
A887 90	TORGOYLE	2016
A9 1040	RAITTS BURN	2016
A9 1050	WILDLIFE PARK U/P	2016
A9 1060	DUNACHTON BURN U/P	2016
A9 1130	CRICHE	2016
A9 1140	CRAIG DHU U/P	2016
A9 1150	CRAIGELLACHIE NR U/P	2016
A9 1170 C12	ALLT NA CRICHE	2016
A9 1440	DALMORE O/B	2016
A9 1450	DALMORE RAIL	2016
A9 1459	KILDARY	2016
A9 1459 W51	BALNAGOWN SOUTH RB	2016
A9 1461	BALNAGOWN RIVER NEW	2016
A9 1462	EAST LODGE U/P	2016
A9 1462 C41	BALMACRAGGAN	2016
A9 1465	PITMADUTHY U/P	2016
A9 1475	ARDJACHIE CREEP	2016
A9 1650	GOLSPIE RAIL	2016
A9 1680	STRATHSTEVEN RAIL	2016
A9 1755 W45	CRACKAIG RB	2016
A9 1760 C70	PORTGOWER MILL NEW	2016
A9 1760 W44	MIDGARTY RB	2016
A9 1760 W74	DUNPHAILHEAD RAIL RB	2016
A9 1885 W5	BRIDGEND CRB WALL RB	2016
A9 1890 W11	LATHERONWHEEL VLA RA	2016
A9 1920 C5	FHEOIR	2016

NEXT PRINCIPLE INSPECTION YEAR: 2016		
Structure Reference Number	STRUCTURE NAME	Next Principal Inspection Year
A9 340	ALMOND	2016
A9 350	LUNCARTY O/B	2016
A9 380	HUNTERS LODGE	2016
A9 390	KINGSWOOD ROAD RAIL	2016
A9 400	BIRNAM GLEN	2016
A9 410	RIVER BRAAN	2016
A9 430	INVER RAIL	2016
A9 450	RIVER TAY	2016
A9 450 C70	DOWALLY BURN	2016
A9 450 C87	GUAY	2016
A9 460	KINDALLACHAN	2016
A9 460 C90	ACCESS ROAD - TOP	2016
A9 460 C92	ACCESS ROAD - BOTTOM	2016
A9 460 C94	INCH FARM CULVERT	2016
A9 460 C96	SUDS POND CULVERT	2016
A9 460 C98	OTTER UNDERPASS	2016
A9 795 F	MILLENNIUM F/B B20	2016
A99 10 C54	ACHASTLE BURN	2016
A99 20 W6	LYBSTER RA	2016
A99 30 C79	HILL O' MANY STANES	2016
A99 40	BRUAN MANSE	2016
A99 40 W30	ULBSTER RB	2016
A99 50	HUMSTER	2016

NEXT PRINCIPLE INSPECTION YEAR: 2017		
Structure Reference Number	STRUCTURE NAME	Next Principal Inspection Year
A82 1380 W45	BOGLASHIN RC ANCH PL	2017
A82 1380 W49	BOGLASHIN LA	2017
A82 1380 W59	URQUHART CASTLE LA	2017
A82 1390	BORLUM	2017
A82 1500 W20	SWIMMING POOL RB	2017
A82 1500 W22	BOWLING CLUB LB	2017
A82 1520	LONGMAN RAIL	2017
A82 220	CAMERON LODGE NORTH	2017
A82 230	EL RETIRO	2017
A82 260	FINLAS	2017
A82 265 C0	ARNBURN	2017
A82 265 C13	PORTBURN	2017
A82 345 C44	FIRKIN	2017
A82 345 C65	STUC AN T'IOBART	2017
A82 345 C89	HOLLYBANK	2017
A82 570	ALLT-ANT SAOIR	2017
A82 610 C87	AUCH 2	2017
A82 610 C94	AUCH 3	2017
A82 615	AUCH	2017
A82 615 C19	AUCH 4	2017

NEXT PRINCIPLE INSPECTION YEAR: 2017		
Structure Reference Number	STRUCTURE NAME	Next Principal Inspection Year
A82 630	COIRE AN DOTHAI DH	2017
A82 700	ETIVE	2017
A82 700 C38	ALLT A' CHRULAISTE	2017
A82 721	CABAR NEW	2017
A82 730 W55	STUDY LB	2017
A82 740	STUDY	2017
A82 750 W19	PASS OF GLENCOE 2 LB	2017
A82 750 W35	PASS OF GLENCOE 5 LB	2017
A82 750 W40	PASS OF GLENCOE 6 LB	2017
A82 750 W62	DROVERS' ROAD RA	2017
A82 780	ALLT RUIGH NEW	2017
A82 930	CORRYCHURRACHAN 1	2017
A828 0 W43	SOUTH CONNEL	2017
A828 11	CONNEL NORTH APPR'CH	2017
A828 150 C15	STEWART HOTEL	2017
A828 30 C60	FERLOCHAN	2017
A828 30 C72	MILL FARM	2017
A828 30 W24	LEDAIG	2017
A828 30 W25	CRAIGNEUK	2017
A828 50 W65	RUBHA RIABHACH NORTH	2017
A828 9	CONNEL SOUTH APPR'CH	2017
A83 170 W97	AUCHGOYLE NORTH EAST	2017
A83 180 W1	AUCHGOYLE SE LB	2017
A83 180 W22	MINARD HILL RA	2017
A83 180 W43	NURSERY COTTAGES	2017
A83 180 W49	EAS NA FEANNAIGE LB	2017
A83 180 W8	WOODHOUSE LB	2017
A83 220 W52	BRACKLEY NORTH	2017
A83 220 W78	THE WASTER	2017
A83 220 W90	TAMBORA	2017
A83 220 W92	TOWPATH COTTAGE LB	2017
A83 220 W99	GLENBURN NORTH	2017
A83 230	GLENBURN	2017
A83 230 W1	GLENBURN SOUTH	2017
A83 230 W3	HYDRO BOARD	2017
A83 230 W47	BUS DEPOT NORTH	2017
A83 230 W51	BUS DEPOT SOUTH LB	2017
A83 230 W55	GREY GULL INN	2017
A83 230 W96	CANAL BASIN LB	2017
A83 260 W5	TIGH-NA-COILLE LB	2017
A83 260 W98	BRENFELD CROFT	2017
A83 270	ALLT NA CRICHE	2017
A83 280 C11	INVERNEILL CORNER	2017
A83 280 C30	TAYLOR'S BAY	2017
A83 340 W1	ERINES LODGE SOUTH	2017
A83 340 W2	ERINES LB	2017
A83 340 W24	MOR BALLA	2017
A83 340 W43	SOUTH MOR BALLA	2017

NEXT PRINCIPLE INSPECTION YEAR: 2017		
Structure Reference Number	STRUCTURE NAME	Next Principal Inspection Year
A83 340 W46	NTH UILEBHEIST BALLA	2017
A83 340 W5	SOUTH ERINES LB	2017
A83 340 W70	MEALL MHOR	2017
A83 350	MEALL MHOR	2017
A83 350 C36	ALLT NA BAITH	2017
A83 350 W1	SLOC NAM FEARNNA	2017
A83 350 W23	EILEAN AN DUNAIN	2017
A83 350 W49	NORTH PORT AN DUNAIN	2017
A83 350 W53	SOUTH PORT AN DUNAIN	2017
A83 360	ASHENS	2017
A83 360 W98	TARBET HARBOUR	2017
A83 364	TARBERT 2	2017
A83 90 W37	DRISHAIG RB	2017
A83 90 W45	EAST DUNDERAVE 1 LB	2017
A83 90 W46	EAST DUNDERAVE 2 LB	2017
A83 90 W47	EAST DUNDERAVE 3 LB	2017
A83 90 W84	EAST STRONE LB	2017
A83 90 W86	STRONE POINT LB	2017
A83 90 W90	NORTH STRONE 1	2017
A83 90 W93	NORTH STRONE 2	2017
A830 100	DRUMSALLIE	2017
A830 110	DRUMSALLIE WOOD	2017
A830 130	FINNAN RIVER	2017
A830 170 W86	CREAG BHAN	2017
A830 230 W6	LOCHAIN DUIBH	2017
A835 170	ARDCHARNICH	2017
A835 180	CORRY	2017
A835 190	BRAES OF ULLAPOOL	2017
A835 55	CONTIN NEW	2017
A835 55 C38	RUITH A'PHUILL	2017
A84 10 W95	ASHMILL GARAGE	2017
A84 130 W62	GABION LB	2017
A84 135 W30	BALQUHIDDER ST (ASS)	2017
A84 140	KENDRUM	2017
A84 20 W60	BRIDGE OF TEITH S	2017
A84 30 W10	AUCHENDOUNE RA	2017
A84 40 W85	TINAGULLOCH	2017
A84 60 W75	CALLANDER NORTH	2017
A85 280	BEICH	2017
A85 420	INVERLOCHY	2017
A85 590	NANT	2017
A85 660 W17	CRAIGLORA	2017
A85 660 W20	THE STUDIO LA	2017
A85 660 W22	DUNALLAN	2017
A85 660 W23	BELOW CONNEL BRIDGE	2017
A85 660 W26	LOCH ETIVE RB	2017
A85 670 W75	BEALACH AN RIGH	2017
A85 670 W77	FUINARY	2017

NEXT PRINCIPLE INSPECTION YEAR: 2017		
Structure Reference Number	STRUCTURE NAME	Next Principal Inspection Year
A85 670 W79	LORNE VIEW	2017
A86 130	CHOILLE RAIS	2017
A86 130 C10	MOY LODGE	2017
A86 130 W66	LUIBLEA	2017
A86 150	MOY BURN	2017
A86 160	ALLT NA H-UAMHA	2017
A86 160 W61	BHAIDEANACH 1 RA	2017
A86 170	URCHAR	2017
A86 200 W37	TULLOCH	2017
A86 200 W48	MURLAGGAN	2017
A86 200 W91	STRONLOSSIT 1	2017
A86 200 W92	STRONLOSSIT 2	2017
A86 22 F	MILLENNIUM F/B D1	2017
A86 220	ACHANEICH EAST	2017
A86 220 C39	ALLT MAIRI	2017
A86 220 C7	ACHANEICH	2017
A86 23 F	MILLENNIUM F/B D5	2017
A86 230	ALLTOUR (ALLT ODHAR)	2017
A86 24 F	MILLENNIUM F/B D2	2017
A86 27 F	MILLENNIUM F/B D3	2017
A86 31 F	MILLENNIUM F/B D4	2017
A86 40 W73	AUCHMORE 1	2017
A87 160 W83	LEAC DUBH 5	2017
A87 160 W85	LEAC DUBH 6	2017
A87 160 W87	BATTLEFIELD 1	2017
A87 160 W88	BATTLEFIELD 3	2017
A87 160 W89	BATTLEFIELD 4	2017
A87 160 W92	DUBH THOLLAIDH	2017
A87 160 W98	EAS NAN ARM EAST RHS	2017
A87 160 W99	EAS NAN ARM EAST LHS	2017
A87 170	EAS NAN ARM	2017
A87 190	SHIEL	2017
A87 200	ALLT A'CHRUINN	2017
A87 220 W16	KEPPOCH ROCK FACE	2017
A87 235 W5	EILEAN DONAN WALL LB	2017
A87 480 W39	SCONSER 2	2017
A87 480 W41	SCONSER HOUSE	2017
A87 480 W42	SCONSER SHED	2017
A87 490	ALLT DARAICH	2017
A87 510	ALLT DUBH	2017
A87 510 C22	LON LIDH	2017
A87 510 C44	LON NA MUICE	2017
A87 520	ALLT A'GHLARSAIR	2017
A87 520 W0	ALLT A'GHLARSAIR 1	2017
A87 520 W62	ALLT A'GHLARSAIR 2	2017
A87 530	LON NAN AIRIGH	2017
A87 530 C50	CULVERT 2	2017
A87 600	LON NA H'IOLAINN	2017

NEXT PRINCIPLE INSPECTION YEAR: 2017		
Structure Reference Number	STRUCTURE NAME	Next Principal Inspection Year
A87 620	ROMESDAL	2017
A87 630	LON RUADH	2017
A87 650 W74	PEINSORIAG	2017
A87 660 W31	NORTH CUIL	2017
A9 1000	SPEY RIVER	2017
A9 1100 C70	CAOCHAN BURN	2017
A9 1170 C32	LAGGANTYGOWAN CREEP	2017
A9 1170 C75	FEITH MHOR	2017
A9 1170 C77	CRANNAICH 1	2017
A9 1180	CARRBRIDGE U/P	2017
A9 1190	DULNAIN	2017
A9 1280 C10	LAIRGANDOUR SOUTH	2017
A9 1280 C68	LAIRGANDOUR NORTH	2017
A9 1290 C5	NAIRNSIDE 2	2017
A9 1290 W4	NAIRNSIDE LB	2017
A9 1355 C32	GLACKMORE	2017
A9 1370	KILTEARN O/B	2017
A9 1380	SGITHEACH RIVER	2017
A9 1390	BALCONIE O/B	2017
A9 1400	ALLT GRAAD	2017
A9 1410	DEEPHAVEN	2017
A9 1420	TEANINICH	2017
A9 1420 C59	CONTULLICH BURN	2017
A9 1430	ALNESS RIVER	2017
A9 1430 C64	DALMORE MILL LADE	2017
A9 1760 C24	WESTGARTY BURN	2017
A9 1760 C29	WESTGARTY CREEP	2017
A9 1760 C41	MIDGARTY BURN	2017
A9 1760 C85	MUNRO'S BRIDGE	2017
A9 1760 W56	CREAGLOISGTE 1 RB	2017
A9 1760 W57	CREAGLOISGTE 2 RB	2017
A9 1760 W61	BRAEHEAD TERRACE RB	2017
A9 1760 W89	GREENPARK RAIL RB	2017
A9 1760 W90	GREENPARK 1 LA	2017
A9 1760 W91	GREENPARK 2 LA	2017
A9 1790	HELMSDALE SHORE ST	2017
A9 1790 C70	NAVIDALE BURN	2017
A9 1790 C80	ALLT BRISTE S	2017
A9 1800	SPUT BURN U/P	2017
A9 1800 C5	SPUT BURN NEW	2017
A9 1860 W99	BORGUE BNSIDE D/S RB	2017
A9 1870 W2	BORGUE BNSIDE D/N RB	2017
A9 1870 W56	DUNBEATH MAINS RB	2017
A9 1885	DUNBEATH NEW	2017
A9 1940 C43	CARSGOE	2017
A9 470	DALNABO O/B	2017
A9 470 W23	BALLINLUIG RAIL LA	2017
A9 470 W96	BROOM BURN CHAN'L RB	2017

NEXT PRINCIPLE INSPECTION YEAR: 2017		
Structure Reference Number	STRUCTURE NAME	Next Principal Inspection Year
A9 520	DALSHIAN RAIL	2017
A9 530	TUMMEL	2017
A9 540	FOSS ROAD	2017
A9 550	CLUNIE	2017
A9 560 W30	TIGH NA BEITHE RB	2017
A9 570	TIGH NA BEITHE RAIL	2017
A9 710	PITAGOWAN RAIL	2017
A9 818 F	MILLENNIUM F/B B13	2017
A9 820 F	MILLENNIUM F/B B12	2017
A9 830 F	MILLENNIUM F/B B11	2017
A9 831 F	MILLENNIUM F/B B10	2017
A9 834 F	MILLENNIUM F/B B9	2017
A9 836 F	MILLENNIUM F/B B8	2017
A9 841 F	MILLENNIUM F/B B6	2017
A9 842 F	MILLENNIUM F/B B5	2017
A9 845 F	MILLENNIUM F/B B4	2017
A9 850 F	MILLENNIUM F/B B3	2017
A9 860 F	MILLENNIUM F/B B2	2017
A9 861 F	MILLENNIUM F/B B1	2017
A9 862 F	MILLENNIUM F/B A23	2017
A9 863 F	MILLENNIUM F/B A22	2017
A9 864 F	MILLENNIUM F/B A21	2017
A9 865 F	MILLENNIUM F/B A20	2017
A9 866 F	MILLENNIUM F/B A19	2017
A9 867 F	MILLENNIUM F/B A18	2017
A9 868 F	MILLENNIUM F/B A17	2017
A9 869 F	MILLENNIUM F/B A16	2017
A9 871 F	MILLENNIUM F/B A14	2017
A9 872 F	MILLENNIUM F/B A13	2017
A9 873 F	MILLENNIUM F/B A12	2017
A9 874 F	MILLENNIUM F/B A11	2017
A9 881 F	MILLENNIUM F/B A10	2017
A9 882 F	MILLENNIUM F/B A9	2017
A9 883 F	MILLENNIUM F/B A4	2017
A9 884 F	MILLENNIUM F/B A8	2017
A9 885 F	MILLENNIUM F/B A7	2017
A9 886 F	MILLENNIUM F/B A6	2017
A9 887 F	MILLENNIUM F/B A5	2017
A9 888 F	MILLENNIUM F/B A3	2017
A9 889 F	MILLENNIUM F/B A2	2017
A9 890 F	MILLENNIUM F/B A1	2017
A99 20	REISGILL	2017
A9S 467	BALLINLUIG BOX CULVT	2017
A9S 468	BALLINLUIG JN 1 RAIL	2017
A9S 469	BALLINLUIG JN 2 RAIL	2017
A9S 469 W1	BALLINLUIG JN MERGE	2017

Principal Inspections due between 2012 and 2017

Structure Type	Total No	PI 2012	PI 2013	PI 2014	PI 2015	PI 2016	PI 2017
Structures with particular Requirements *	11	1	1	2			
Bridges	565	39	127	116	96	116	71
Footbridges	58	3	4	4	3	5	39
Culverts	227	26	26	25	48	62	40
Retaining Walls	515	135	54	49	89	80	108
Gantries	28	0	21	1	4	2	0
High Mast Lights	4	0	0	4	0	0	0

* See notes 4 and 5

Notes:

- For supplementary information on bridges with particular requirements, refer to Schedule 7 Part 7.
- Further information on the Structures listed within this table is held within the structures management function of the Integrated Roads Information System and the information room.
- The numbers of Structures may be altered during the course of this Contract at the Director's discretion.
- All structures with particular requirements lie within the PI programme, except where specifically excluded by their own maintenance manual as noted in Schedule 7 Part 7.
- Not all structures with particular requirements have PIs in between 2012 and 2017.

This is Annex 7.6/C to Schedule 7 Part 6 referred to in the foregoing Agreement between Scottish Ministers and BEAR Scotland Limited.

SCOTTISH MINISTERS' REQUIREMENTS

SCHEDULE 7 PART 6

MANAGEMENT AND MAINTENANCE OF STRUCTURES

ANNEX 7.6/C – List of Structures Over or Carrying Watercourses which have been subject to a Stage 1 Scour Assessment

SCOTTISH MINISTERS' REQUIREMENTS

SCHEDULE 7 PART 6

MANAGEMENT AND MAINTENANCE OF STRUCTURES

ANNEX 7.6/C – List of Structures Over or Carrying Watercourses which have been subject to a Stage 1 Scour Assessment

Structure Ref No.	Structure Name
A82 1000	TOMNAHARRY
A82 1010	MHUILINN
A82 1010 F	MHUILINN F/B
A82 1020	CAILLICH
A82 1020 F	CAILLICH F/B
A82 1030	LUNDY
A82 1030F	LUNDY
A82 1040	SPEAN
A82 1050	MAIRI
A82 1060	INVERGLOY
A82 1070	ALTRUA
A82 1080	LEITIRI
A82 1095	CORRIEGOUR LODGE NEW
A82 1100	ATHA
A82 1110	LEAGANN
A82 1120	CHOILICH
A82 1130	CEANNSIDE SIX
A82 1140	CEANNSIDE FOUR
A82 1150	CEANNSIDE THREE
A82 1160	CEANNSIDE 2
A82 1170	SITHEINN
A82 1180	LAGAIN
A82 1190	LAGAN SWING BRIDGE
A82 1200	INVERGARRY
A82 1210	GHLEANNAIN
A82 1220	OICH
A82 1230	ABERCHALDER SWING BR
A82 1240	UANAGAN
A82 1250	FT AUGUSTUS SWING BR
A82 1260	FORT AUGUSTUS
A82 1270	BHROCHAIN
A82 1280	UISGE
A82 1290	ALLT A' MHUILINN
A82 1300	PORTCLAIR
A82 1310	INVERMORISTON
A82 1320	COINNEAG
A82 1330	ALLT SAIGH
A82 1340	WATERFALL
A82 1350	GROTAIG
A82 1360	TYNEHERRICK

Structure Ref No.	Structure Name
A82 1370	EIREIGE
A82 1380	FHITHICH
A82 1390	BORLUM
A82 1400	DRUMNADROCHIT
A82 1420	FHEARCHAIR
A82 1430	FOITHANEAN
A82 1440	BRACHLA
A82 1450	KILLIANAN
A82 1460	RUITH
A82 1470	LOCHEND
A82 1480	DOCHFOUR
A82 1490	TOMNAHURICH SWING BR
A82 1500	FRIARS
A82 220	CAMERON LODGE NORTH
A82 230	EL RETIRO
A82 240	FRUIN OLD
A82 242	FRUIN NEW
A82 250	ALDYALLAN
A82 260	FINLAS
A82 285	LUSS WATER
A82 305	CULAG FARM
A82 315	CULVERT 38
A82 325	WADE'S BRIDGE
A82 342	INVERBEG
A82 345	CAMUS NAN CLAIS
A82 370	STUCKGOWAN
A82 380	TARBET SMITHY
A82 380 F	TARBET SMITHY F/B 1
A82 381 F	TARBET SMITHY F/B 2
A82 390	INVERUGLAS
A82 400	SLOY TAIL RACE
A82 410	ARDVORLICH NORTH
A82 420	STUCKINDROIN
A82 423 F	ARDLUI F/B
A82 430	STRATH DUBH-UISAGE S
A82 440	STRATH DUBH-UISAGE N
A82 450	INVERARNAN
A82 460	DUBH EAS
A82 470	DUBH EAS SOUTH
A82 480	DUBH EAS NORTH
A82 490	ALLT FIONNE GHLINNES
A82 500	ALLT FIONNE GHLINNEN
A82 510	EAS EONAN
A82 550	HERIVE BURN
A82 570	ALLT-ANT SAOIR
A82 580	STRATHFILLAN MANSE
A82 590	TYNDRUM
A82 600	CLIFTON
A82 600 F	CLIFTON F/B
A82 610	ALLT COIRE CHAILEIN

Structure Ref No.	Structure Name
A82 615	AUCH
A82 620	ALLT CHONOGLAIS
A82 630	COIRE AN DOTHaidH
A82 640	TULLA
A82 650	ALLT NA H ACHLAISE
A82 660	BA
A82 670	ALLT MOLACH
A82 680	ALLT NAN GUIBHAS
A82 690	CREAGDHUBH
A82 700	ETIVE
A82 710	ALLT NA FEADH
A82 710 F	ALLT NA FEADH F/B
A82 721	CABAR NEW
A82 730	MEANNARCLACH
A82 740	STUDY
A82 760	CHAILLEACH
A82 770	ALLTANRIGH
A82 780	ALLT RUIGH NEW
A82 790	CHANCELLOR
A82 800	ACHTRIOCHTAN
A82 810	ACHNAMBEITHACH
A82 820	ALLT NA MUIDHE
A82 830	ALLT FHIODHAN
A82 850	LARoch RIVER
A82 860	ST JOHNS RECTORY
A82 870	BALLACHULISH
A82 880	ST BRIDES EPISCOPAL
A82 890	SMITHY
A82 900	ONICH SCHOOL
A82 910	RIGH
A82 920	CORRYCHURRACHAN STH.
A82 930	CORRYCHURRACHAN 1
A82 940	CORRYCHURRACHAN 2
A82 950	BEINN BHAN BURN
A82 960	KIACHNISH
A82 970	FT WILLIAM ASHBURN
A82 980	NEVIS RIVER
A82 985	AN AIRD
A828 10	CONNEL
A828 110	KINLOCHLAICH
A828 120	ACHOSREGAN
A828 140	DALNATRAT
A828 150	DUROR
A828 160	LAGNAHA
A828 170	KENTALLEN STATION
A828 190	BALLACHULISH HOUSE
A828 40	BARCaldINE HOME FARM
A828 50	BARCaldINE GARDENS
A828 60	CREAGAN NEW
A828 90	INVERNAHYLE

Structure Ref No.	Structure Name
A83 100	SHIRA NEW
A83 110	ARAY
A83 120	DOUGLAS WATER
A83 130	AUCHENDRAIN
A83 140	LEACANN
A83 150	SANDHOLE
A83 160	WHITEBRIDGE
A83 170	CRARAE
A83 180	AUCHGOYLE
A83 190	ASKNISH
A83 20	LOIN WATER
A83 210	TOM BAN
A83 220	CORRAN
A83 221 F	CORRAN F/B
A83 230	GLENBURN
A83 250	ATTICHUAN
A83 270	ALLT NA CRICHE
A83 280	INVERNEILL NEW
A83 290	STRONACHULLIN
A83 30	TORPEDO RANGE
A83 300	ARTILLIGAN
A83 310	ARTILLIGAN COTTAGE
A83 320	ALLT MUIC RU Aidh OLD
A83 330	ERINES
A83 340	ERINES SOUTH LODGE
A83 350	MEALL MHOR
A83 360	ASHENS
A83 364	TARBERT 2
A83 370	CORRANBUIE
A83 380	BARDARAVINE
A83 390	ACHNACARNAN SOUTH
A83 40	LITTLE REST
A83 50	CROE WATER
A83 60	COBBLER
A83 70	KINGLAS
A83 80	FYNE
A83 99	SHIRA OLD
A830 10	LOCHY RIVER NEW
A830 100	DRUMSALLIE
A830 110	DRUMSALLIE WOOD
A830 130	FINNAN RIVER
A830 140	CHALLUIM
A830 150	DHUIBH
A830 170	UTHA
A830 180	DEARG
A830 190	GARBH
A830 200	RANOCHAN
A830 220	CRICHE
A830 230	ARIENISKILL
A830 240	MAODAIL

Structure Ref No.	Structure Name
A830 30	ANNAT
A830 301	ALLTA MHAMA NEW
A830 330	BEASDALE BURN
A830 350	BORRODALE BURN
A830 360	LARRACHMORE
A830 375	ALLT CAM CARACH
A830 395	MORAR RIVER NEW
A830 40	CAMUSNATHA
A830 420	GLEN DARY ACCESS
A830 50	ALLT NA LEATHBHEINN
A830 60	ACHDALIEU
A830 70	ALLT NA FHEIDH
A830 80	FASSFERN
A830 90	CORRYBEG
A835 10	CONON
A835 100	INCHBAE
A835 110	BLACK BRIDGE
A835 120	TORRAN DHU
A835 130	LEACACHAIN
A835 140	CHUMHAINN
A835 150	ALLT A BHRAIGHE
A835 160	INVERLAEL
A835 170	ARDCHARNICH
A835 180	CORRY
A835 190	BRAES OF ULLAPOOL
A835 30	USSIE BURN 1 (ARMCO)
A835 50	CONTIN OLD (PEDEST.)
A835 55	CONTIN NEW
A835 70	SILVER BRIDGE OLD
A835 75	ACHNACLERACH
A835 80	BEALLACH
A835 90	GARBAT
A84 10	DRIP
A84 100	ANNIE BURN
A84 110	ARDCHULLARIE
A84 120	STRATHYRE
A84 130	CREAGAN
A84 137	BALQUHIDDER STATION
A84 140	KENDRUM
A84 20	ASHMILL LEFT HAND
A84 21	ASHMILL RIGHT HAND
A84 30	TEITH
A84 39	OLD ANNET
A84 40	ANNET BURN
A84 50	COILLIECHAT 1
A84 60	KELTY
A84 70	LENY
A84 80	KILMAHOG 1
A84 90	KILMAHOG 2
A85 100	TOFTS

Structure Ref No.	Structure Name
A85 110	DALVRECK
A85 130	CLATHICK
A85 140	LAWERS
A85 150	MILTON
A85 170	LEDNOCK
A85 180	TULLYBANNOCHER
A85 190	BOLTACHAN
A85 210	FANK
A85 230	ST FILLANS TAILRACE
A85 240	ALLT AN FHIONN
A85 250	GLENTARKEN
A85 260	DERRY WOOD
A85 270	DALKENNETH
A85 280	BEICH
A85 290	GLEN OGLE
A85 290 F	GLEN OGLE F/B
A85 300	OGLE
A85 310	ALLT LAIRIG CHEILE
A85 320	ARDCHYLE
A85 330	LEDCHARRY
A85 340	LUIB BURN
A85 350	LUIB STATION
A85 360	ALLT COIRE CHAORACH
A85 370	IMMERDHU
A85 380	BENMORE
A85 390	ALLT COIRE ARDRAIN
A85 400	CRIANLARICH STN BURN
A85 420	INVERLOCHY
A85 440	DUNORCHY
A85 450	DALMALLY HOTEL
A85 460	KINCHRAKINE
A85 470	KINCHRAKINE WEST
A85 480	ORCHY
A85 500	LORGAI DH
A85 510	CRUACHAN VIADUCT
A85 520	FALLS OF CRUACHAN E
A85 530	FALLS OF CRUACHAN
A85 540	FALLS OF CRUACHAN W
A85 550	BRANDER VIADUCT
A85 560	ALLT BRANDER
A85 570	CRUINACHE NEW
A85 580	BRIDGE OF AWE
A85 590	NANT
A85 600	TAYNUILT HOTEL
A85 620	AIRDS
A85 630	LAKEFIELD RAIL
A85 640	FEARNOCH
A85 660	LUSRAGAN
A85 670	SAULMORE
A85 680	BLACK LYNN

Structure Ref No.	Structure Name
A85 70	LOCHTY
A85 80	METHVEN
A85 90	KEILLOUR
A86 101	ALLT A' CHRANNAIG
A86 111	ALLT A COIRE ARDHAIR
A86 130	CHOILLE RAIS
A86 150	MOY BURN
A86 160	ALLT NA H-UAMHA
A86 170	URCHAR
A86 180	CLACHAIG
A86 190	ALLT A' CHAORAINN
A86 20	GYNACK
A86 200	DAMH
A86 210	ROY
A86 22 F	MILLENNIUM F/B D1
A86 220	ACHANEICH EAST
A86 23 F	MILLENNIUM F/B D5
A86 230	ALLTOUR (ALLT ODHAR)
A86 24 F	MILLENNIUM F/B D2
A86 27 F	MILLENNIUM F/B D3
A86 30	AULT LAURIE
A86 31 F	MILLENNIUM F/B D4
A86 40	CALDER
A86 50	MILL HOUSE BURN
A86 60	LAGGAN
A86 70	STRATHMASHIE
A86 80	KINLOCH LAGGAN
A87 10	ALDERNAIG
A87 100	LUNDIE
A87 110	LUNDIE COTTAGE
A87 120	ALLT COIRE LAIR
A87 130	ALLT CHOIRE A'CHAIT
A87 140	AN CAORANN MOR
A87 150	AN CAORANN BEAG
A87 160	COIRE THOLL BHRUACH
A87 170	EAS NAN ARM
A87 180	MALAGAN
A87 190	SHIEL
A87 20	ACHA LUACHRIACH
A87 200	ALLT A'CHRUINN
A87 210	CLACHAN DUICH
A87 220	AN LETH-ALLT
A87 245	DORNIE NEW
A87 250	NOSTIE
A87 260	BALMACARA NEW
A87 280	CARRICH
A87 290	SKYE
A87 30	DAINGEAN
A87 300	ALLT ANAVIG
A87 310	ALLT AN DARAICH

Structure Ref No.	Structure Name
A87 320	LUSA NEW
A87 330	ASHAIG
A87 340	BUNAN
A87 350	LOINN BHAINN NEW
A87 370	BIDEICH NEW
A87 380	HARRAPOOL
A87 390	MHUILLIN NEW
A87 40	BHOIRA
A87 400	BROADFORD
A87 410	FEARNA NEW
A87 420	STROLLAMUS
A87 430	LUIB
A87 440	LOCH AINORT
A87 450	ABHAINN CEANN
A87 460	BRUADARAN
A87 470	ALLT MHIC MHOREIN
A87 480	TORRA-MICHAIG
A87 490	ALLT DARAICH
A87 50	GARBH DHOIRE
A87 500	SLIGACHAN
A87 510	ALLT DUBH
A87 520	ALLT A'GHLARSAIR
A87 530	LON NAN AIRIGH
A87 540	LON CHAORACH
A87 550	LON NA H-AIRIGH
A87 560	VARRAGIL
A87 570	ALLT TOTA THAOIG
A87 60	LOYNE
A87 600	LON NA H'IOLAINN
A87 610	HAULTIN
A87 620	ROMESDAL
A87 630	LON RUADH
A87 640	HINNISDAL
A87 650	ABHAINN BHAL
A87 660	CONON (UIG)
A87 670	RHA
A87 70	MORISTON
A87 80	FHEARCHAIR
A87 90	PEATHRAIN
A887 10	LEVISHIE
A887 100	ALLT NA H-INNSE BEAG
A887 110	ALLT NA H-INNSE
A887 120	ALLT DUBH
A887 140	ALLT A' CHAISE
A887 150	ALLT A COIRE BHUIDHE
A887 160	ALLT NA CRICHE
A887 170	ALLT A' GHOIRTEIN
A887 180	ALLT AN EOIN
A887 190	CEANNACROC
A887 20	CEANN AN ACHAI DH

Structure Ref No.	Structure Name
A887 30	CAOCHAN NA MUIC
A887 40	BHLARAI DH
A887 50	ALLT LARAI RH
A887 80	LAGAIN BHAIN
A887 90	TORG OYLE
A889 10	DROCHAID A'BHACAIN
A889 20	DALWHINNIE
A889 40	ALLT BREAKACHY
A889 50	LAGG (CUBHAIGE)
A9 1000	SPEY RIVER
A9 1040	RAITTS BURN
A9 1060	DUNACHTON BURN U/P
A9 1090	ALLT AN FHEARNA
A9 1100	ALLT CHRIOCHAI DH
A9 1130	CRICHE
A9 1190	DULNAIN
A9 1200	BADDENGORM
A9 1207 F	SLOCHD SUMMIT 3 F/B
A9 1230	FINDHORN
A9 1250	ALLT NA FRITHE
A9 1260	DALMAGARRY
A9 1262 F	MILLENNIUM F/B F1
A9 1290	DAVIOT NEW
A9 1291	DAVIOT OLD
A9 1350	KES SOCK
A9 1360	CROMARTY
A9 1380	SGITHEACH RIVER
A9 1400	ALLT GRAAD
A9 1430	ALNESS RIVER
A9 1461	BALNAGOWN RIVER NEW
A9 1470	HILTON NEW
A9 1585	DORNOCH
A9 1587	EVELIX CUTHILL LINKS
A9 1590	EVELIX NEW
A9 1590 C54	SKELBO BURN
A9 1600	MOUND SLUICES
A9 1615	FLEET NEW
A9 1630	CULMAILY FARM OLD
A9 1640	CULMAILY NEW
A9 1660	GOLSPIE BIG BURN NEW
A9 1695	BRORA RIVER NEW
A9 1700	CRAIGALLACHIE
A9 1710	CLYNEMILTON BURN
A9 1720	KINTRADWELL BURN
A9 1730	COLLIEBURN
A9 1745	ALTNAC OUL NEW
A9 1755	LOTH RIVER NEW
A9 1760	CULGOWER BURN
A9 1760 C24	WESTGARTY BURN
A9 1760 C41	MIDGARTY BURN

Structure Ref No.	Structure Name
A9 1785	HELMSDALE RIVER NEW
A9 1799	WIDOW'S OLD
A9 1809	BROKEN BURN
A9 1820	ORD BURN OLD
A9 1830	OUSDALE
A9 1840	ALT BRAIGH NAM MEUR
A9 1840 C7	ALLT SLEIBHT EAN
A9 1850	BERRIEDALE LANGWELL
A9 1860	BERRIEDALE WATER
A9 1860 W99	BORGUE BURNSIDE
A9 1870	BORGUE
A9 1885	DUNBEATH NEW
A9 1890	LATHERONWHEEL
A9 1900	LATHERON
A9 1910	RANGAG
A9 1920	TACHER
A9 1950	THURSO RIVER
A9 1960	BURNSIDE BURN
A9 340	ALMOND
A9 360	SHOCHIE
A9 370	ORDIE
A9 400	BIRNAM GLEN
A9 410	RIVER BRAAN
A9 420	INVER MILL LADE
A9 450	RIVER TAY
A9 460	KINDALLACHAN
A9 500	LOCH BROOM BURN
A9 530	TUMMEL
A9 550	CLUNIE
A9 580	TYNATIED (BURN B)
A9 610	EACHAINN (BURN C)
A9 640	ALLT GIRNAIG
A9 660	ALLT CHLUAIN
A9 670	ESSANGAL
A9 680	ALLT BHAIC
A9 690	PITALDONICH
A9 720	ALLT A'CROMBAIDH
A9 730	CLUNES BURN
A9 740	ALLT CRAM BHRUTHAIH
A9 750	DALNAMEIN
A9 760	ALLT GEILLEIDH
A9 760 C20	CARN NA SAIDHE N/B
A9 760 C21	CARN NA SAIDHE S/B
A9 790	EDENDON WATER
A9 795 F	MILLENNIUM F/B B20
A9 800	ALLT AN STALCAIR N/B
A9 810	ALLT AN STALCAIR S/B
A9 818 F	MILLENNIUM F/B B13
A9 820	ALLT AN BHATHAICH NB
A9 820 F	MILLENNIUM F/B B12

Structure Ref No.	Structure Name
A9 830	ALLT AN BHATHAICH SB
A9 830 F	MILLENNIUM F/B B11
A9 831 F	MILLENNIUM F/B B10
A9 834 F	MILLENNIUM F/B B9
A9 836 F	MILLENNIUM F/B B8
A9 840	ALLT CHOARACH MOR
A9 841 F	MILLENNIUM F/B B6
A9 842 F	MILLENNIUM F/B B5
A9 845 F	MILLENNIUM F/B B4
A9 850	ALLT COIRE MHIC SITH
A9 850 F	MILLENNIUM F/B B3
A9 860	ALLT A'CHAORRUINN
A9 860 F	MILLENNIUM F/B B2
A9 861 F	MILLENNIUM F/B B1
A9 862 F	MILLENNIUM F/B A23
A9 863 F	MILLENNIUM F/B A22
A9 864 F	MILLENNIUM F/B A21
A9 865 F	MILLENNIUM F/B A20
A9 866 F	MILLENNIUM F/B A19
A9 867 F	MILLENNIUM F/B A18
A9 868 F	MILLENNIUM F/B A17
A9 869 F	MILLENNIUM F/B A16
A9 870	ALLT DUBHAIG
A9 871 F	MILLENNIUM F/B A14
A9 872 F	MILLENNIUM F/B A13
A9 873 F	MILLENNIUM F/B A12
A9 874 F	MILLENNIUM F/B A11
A9 879 F	N OF BALSPORRAN F/B
A9 880	ALLT CHUIRN
A9 881 F	MILLENNIUM F/B A10
A9 882 F	MILLENNIUM F/B A9
A9 883 F	MILLENNIUM F/B A4
A9 884 F	MILLENNIUM F/B A8
A9 885 F	MILLENNIUM F/B A7
A9 886 F	MILLENNIUM F/B A6
A9 887 F	MILLENNIUM F/B A5
A9 888 F	MILLENNIUM F/B A3
A9 889 F	MILLENNIUM F/B A2
A9 890	ALLT NAN CISTEACHAN
A9 890 F	MILLENNIUM F/B A1
A9 891 F	S OF DALWHINNIE F/B
A9 900	ALLT UILLEIM
A9 910	ALLT BHATHAICH
A9 920	AQUEDUCT
A9 930	ALLT CUAICH
A9 940	ALLT GARBH
A9 950	ALLT NA CEARDAICH
A9 970	INVERTON
A99 10	FORSE
A99 10 W44	REMIGGY

Structure Ref No.	Structure Name
A99 20	REISGILL
A99 30	OCCUMSTER CLYTH BURN
A99 30 C79	HILL O' MANY STANES
A99 40	BRUAN MANSE
A99 50	HUMSTER

This is Annex 7.6/D to Schedule 7 Part 6 referred to in the foregoing Agreement between Scottish Ministers and BEAR Scotland Limited.

SCOTTISH MINISTERS' REQUIREMENTS

SCHEDULE 7 PART 6

MANAGEMENT AND MAINTENANCE OF STRUCTURES

ANNEX 7.6/D – List of Structures Over or Carrying Watercourses which have been subject to a Stage 2 Scour Assessment

SCOTTISH MINISTERS' REQUIREMENTS

SCHEDULE 7 PART 6

MANAGEMENT AND MAINTENANCE OF STRUCTURES

ANNEX 7.6/D – List of Structures Over or Carrying Watercourses which have been subject to a Stage 2 Scour Assessment

Structure Ref No.	Structure Name
A9 530	TUMMEL
A9 660	ALLT CHLUAIN
A9 680	ALLT BHAIC
A9 891 F	S OF DALWHINNIE F/B
A9 900	ALLT UILLEIM
A9 1040	RAITTS BURN
A9 1600	MOUND SLUICES
A9 1760	CULGOWER BURN
A82 1010	MHUILINN
A82 1080	LEITIRI
A82 1130	CEANNSIDE SIX
A82 1210	GHLEANNAIN
A82 1220	OICH
A82 1460	RUITH
A82 1500	FRIARS
A83 99	SHIRA OLD
A83 220	CORRAN
A84 10	DRIP
A84 60	KELTIE
A84 120	STRATHYRE
A84 130	CREAGAN
A85 180	TULLYBANNOCHER
A85 250	GLENTARKEN
A85 260	DERRY WOOD
A85 300	OGLE
A85 640	FEARNOCH
A86 20	GYNACK
A86 130	CHOILLE RAIS
A87 245	DORNIE NEW
A87 260	BALMACARA NEW
A87 480	TORRA-MICHAIG
A87 540	LON CHAORACH
A830 301	ALLTA MHAMA NEW
A835 10	CONON
A835 30	USSIE BURN 1
A835 50	CONTIN OLD (PEDEST)
A887 10	LEVISHIE
A887 20	CEANN AN ACHAI DH
A887 80	LAGAIN BHAIN
A887 80	LAGAIN BHAIN OLD

Structure Ref No.	Structure Name
A887 90	TORGOYLE
A887 100	ALLT NA H-INNSE BEAG
A887 190	CEANNACROC
A889 40	ALLT BREAKACHY
A9 890	ALLT NAN CISTEACHAN
A9 910	ALLT BHATHAICH
A9 940	ALLT GARBH
A82 285	LUSS WATER
A82 370	STUCKGOWAN
A82 380	TARBET SMITHY
A82 1170	SITHEINN
A84 140	KENDRUM
A85 70	LOCHTY
A85 90	KEILLOUR
A86 190	ALLT A' CHAORAINN
A830 110	DRUMSALLIE WOOD
A830 130	FINNAN RIVER
A9 879 F	N OF BALSPORRAN F/B
A9 930	ALLT CUAICH
A9 1960	BURNSIDE BURN
A82 380 F	TARBET SMITHY F/B
A87 660	CONON (UIG)

This is Annex 7.6/E to Schedule 7 Part 6 referred to in the foregoing Agreement between Scottish Ministers and BEAR Scotland Limited.

SCOTTISH MINISTERS' REQUIREMENTS

SCHEDULE 7 PART 6

MANAGEMENT AND MAINTENANCE OF STRUCTURES

ANNEX 7.6/E – List of Structures subject to Assessment and Upgrading of Vehicle Parapets to Transport Scotland Interim Advice Note 25

SCOTTISH MINISTERS' REQUIREMENTS

SCHEDULE 7 PART 6

MANAGEMENT AND MAINTENANCE OF STRUCTURES

ANNEX 7.6/E – List of Structures subject to Assessment and Upgrading of Vehicle Parapets to Transport Scotland Interim Advice Note No 25

None.

This is Annex 7.6/F to Schedule 7 Part 6 referred to in the foregoing Agreement between Scottish Ministers and BEAR Scotland Limited.

SCOTTISH MINISTERS' REQUIREMENTS

SCHEDULE 7 PART 6

MANAGEMENT AND MAINTENANCE OF STRUCTURES

ANNEX 7.6/F – List of Structures Subject to Identification of 'Particularly at Risk' Supports to Transport Scotland Interim Advice Note 29

SCOTTISH MINISTERS' REQUIREMENTS

SCHEDULE 7 PART 6

MANAGEMENT AND MAINTENANCE OF STRUCTURES

ANNEX 7.6/F – List of Structures Subject to Identification of 'Particularly at Risk' Supports to Transport Scotland Interim Advice Note 29

Structure Ref No.	Structure Name
A9 350	LUNCARTY
A9 470	DALNABO
A9 550	CLUNIE
A9 1020	KERROW
A9 1210	SLOCHD BEAG
A9 1300	INSHES OB
A9 1310	RAIGMORE S
A9 1320	RAIGMORE N
A9 1390	BALCONIE OB

This is Annex 7.6/G to Schedule 7 Part 6 referred to in the foregoing Agreement between Scottish Ministers and BEAR Scotland Limited.

SCOTTISH MINISTERS' REQUIREMENTS

SCHEDULE 7 PART 6

MANAGEMENT AND MAINTENANCE OF STRUCTURES

ANNEX 7.6/G – Technical Approval Procedures for Assessment of Structures in Scotland

SCOTTISH MINISTERS' REQUIREMENTS

SCHEDULE 7 PART 6

MANAGEMENT AND MAINTENANCE OF STRUCTURES

ANNEX 7.6/G – Technical Approval Procedures for Assessment of Structures in Scotland

Assessor shall agree AIP with the TAA. This shall embrace all relevant documents from the TAS including the UK Design Manual for Roads and Bridges, and may include departures from standards or aspects not covered by standards.
↓ ↓
Assessment and check shall be carried out and the TAA shall be consulted on those aspects of the assessment which do not comply with the AIP. If further amendments to the AIP shall be required, either by the assessor or the Checker, these shall be approved by the TAA and an addendum to the AIP submitted.
↓ ↓
Assessor shall give recommendations on and agree with the TAA any substandard features identified by the assessment which are not to be upgraded. Any interim measures shall also be agreed at this stage.
↓ ↓
Assessment report submitted to the TAA with list of all substandard features identifying those which shall not be upgraded and giving recommendations for any Special Inspection or studies needed prior to the design of strengthening and/or improvement Operations.
↓ ↓
Assessor shall submit assessment and check certificates on which shall be recorded all agreed and/or approved departures from standards.
↓ ↓
TAA/OD accepts assessment and check certificates endorsing all departures from standards or aspects not covered by standards.
↓ ↓
END OF ASSESSMENT

DEFINITION

Assessment includes:

1. Load carrying capacity of deck and substructure
2. Parapets
3. Pier impact resistance
4. Safety fencing
5. Visibility
6. Vertical and Horizontal Clearances
7. Central reserve, carriageway, footway, and verge provision
8. Scour risk
9. All other aspects relative to the AIP

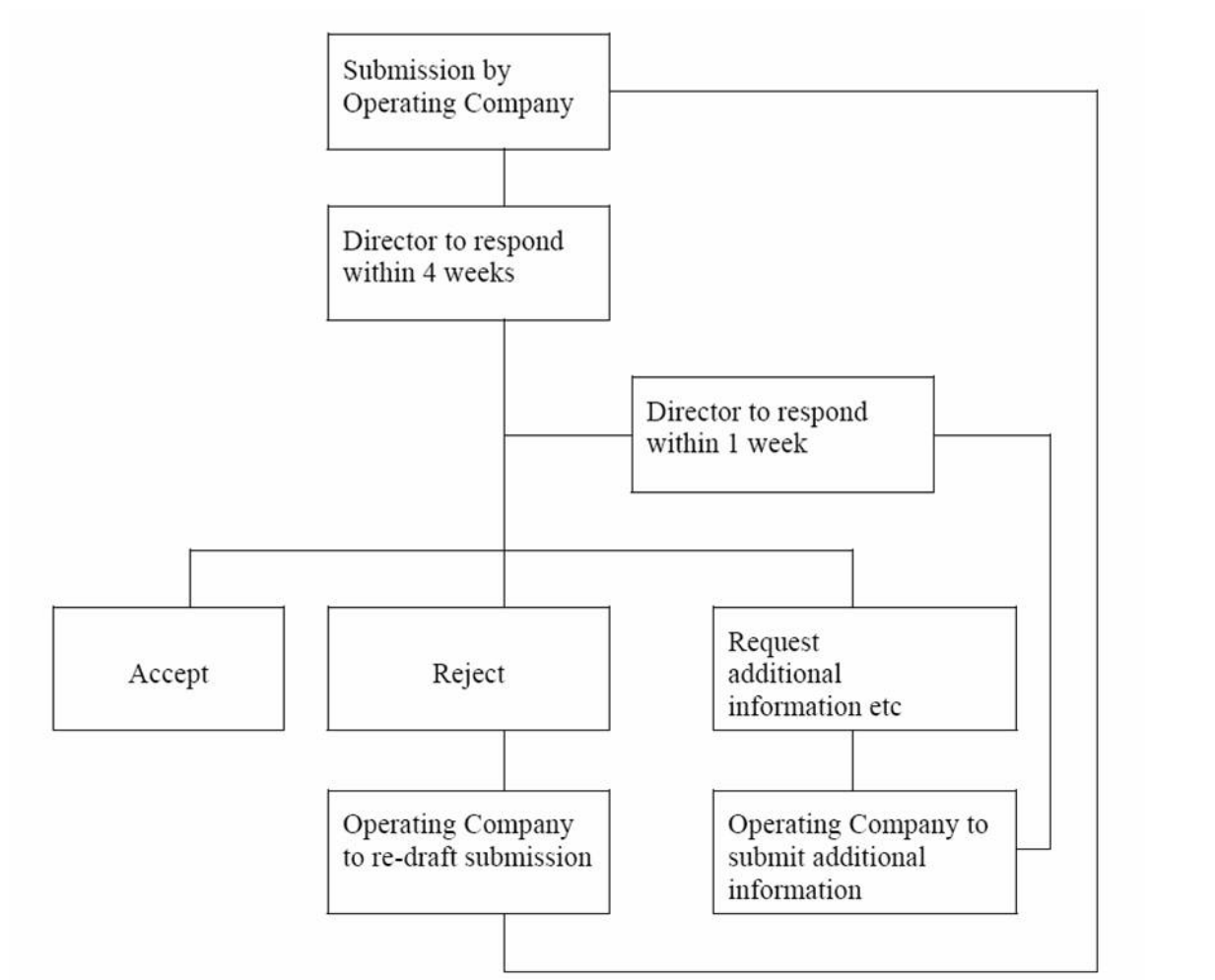
ABBREVIATIONS

TAA	= Technical Approval Authority
TAS	= Technical Approval Schedule
AIP	= Approval in Principle
OD	= Overseeing Department

NOTE:

1. For strengthening and or improvement works, Technical Approval procedures shall be the same as for new Structures.

Figure 1.1.1.A – Flow Chart for Departures from Standard or Aspects not Covered by Standards



This is Annex 7.6/H to Schedule 7 Part 6 referred to in the foregoing Agreement between Scottish Ministers and BEAR Scotland Limited.

SCOTTISH MINISTERS' REQUIREMENTS

SCHEDULE 7 PART 6

MANAGEMENT AND MAINTENANCE OF STRUCTURES

ANNEX 7.6/H – List of Sub-Standard Structures with Structural Assessments in Progress

SCOTTISH MINISTERS' REQUIREMENTS

SCHEDULE 7 PART 6

MANAGEMENT AND MAINTENANCE OF STRUCTURES

ANNEX 7.6/H – List of Sub-Standard Structures with Structural Assessments in Progress

There are no Structures in the North West Unit which have Structural Assessments in progress or under review.

This is Annex 7.6/I to Schedule 7 Part 6 referred to in the foregoing Agreement between Scottish Ministers and BEAR Scotland Limited.

SCOTTISH MINISTERS' REQUIREMENTS

SCHEDULE 7 PART 6

MANAGEMENT AND MAINTENANCE OF STRUCTURES

ANNEX 7.6/I – List of Sub-Standard Structures

SCOTTISH MINISTERS' REQUIREMENTS

SCHEDULE 7 PART 6

MANAGEMENT AND MAINTENANCE OF STRUCTURES

ANNEX 7.6/I – List of Sub-Standard Structures

Structure Reference	Structure Name	Sub-Standard Details
A82 620	ALLT CHONOGLAIS	7.5t ALL
A82 670	ALLT MOLACH	7.5t ALL
A82 680	ALLT NAN GUIBHAS	17.0t ALL
A82 690	CREAGDUBH	38.0t ALL
A82 770	ALLTANRIGH	17.0t ALL
A82 800	ACHTRIOCHTAN	38.0t ALL
A82 830	ALLT FHIODHAN	7.5t ALL
A84 35	CAMBUS	7.5t ALL
A85 280	BEICH	Weak verge
A85 680	BLACK LYNN	Weak verge
A87 340	BUNAN	38.0t ALL
A87 400	BROADFORD	17.0t ALL
A87 440	LOCH AINORT	Weak verge
A87 600	LON NA H'IOLAINN	Weak verge
A830 130	FINNAN RIVER	Weak verge
A887 40	BHLARAI DH	Weak verge
A887 80	LAGAIN BHAIN	17.0t ALL
A887 100	ALLT NA H-INNSE BEAG	17.0t ALL

Culvert Reference	Culvert Name	Sub-Standard Details
A82 600 C10	CLIFTON	17.0t ALL

Retaining Wall Reference	Retaining Wall Name	Sub-Standard Details
A82 1060 W99	ALTRUA WALL	0.1t ALL
A83 90 W25	ARDGENAVAN SOUTH 2	38.0t ALL
A83 160 W86	TIGH CLADICH SOUTH	38.0t ALL
A84 90 W0	KILMAHOG	38.0t ALL
A84 90 W15	PASS HOUSE	38.0t ALL
A86 40 W75	AUCHMORE 2	3.0t ALL
A86 200 W65	CRUINNICHIDH	3.0t ALL
A99 40 W30	ULBSTER RB	0.1t ALL

This is Annex 7.6/J to Schedule 7 Part 6 referred to in the foregoing Agreement between Scottish Ministers and BEAR Scotland Limited.

SCOTTISH MINISTERS' REQUIREMENTS

SCHEDULE 7 PART 6

MANAGEMENT AND MAINTENANCE OF STRUCTURES

ANNEX 7.6/J – List of Structures with Known Defects Requiring Monitoring which are Sub-Standard

SCOTTISH MINISTERS' REQUIREMENTS

SCHEDULE 7 PART 6

MANAGEMENT AND MAINTENANCE OF STRUCTURES

ANNEX 7.6/J – List of Structures with Known Defects Requiring Monitoring which are Sub-Standard

Structure Reference	Structure Name	Monitoring				Comment
		Interim Measures (Formal/Other)	Class (BD 79/06 App. C)	Interval	Details	
A82 620	ALLT CHONOGLAIS	Formal	1	Yearly	7.5t ALL	To be replaced
A82 670	ALLT MOLACH	Formal	1	Yearly	7.5t ALL	To be replaced
A82 680	ALLT NAN GUIBHAS	Formal	1	Yearly	17.0t ALL	To be replaced
A82 690	CREAGDUBH	Formal	1	Yearly	38.0t ALL	To be replaced
A82 770	ALLTANRIGH	Formal	1	Yearly	17.0t ALL	To be replaced
A82 800	ACHTRIOCHTAN	Formal	1	Yearly	38.0t ALL	To be replaced
A82 830	ALLT FHIODHAN	Formal	1	Yearly	7.5t ALL	To be replaced
A84 35	CAMBUS	Formal	1	Yearly	7.5t ALL	To be re-assessed
A87 400	BROADFORD	Formal	1	Yearly	17.0t ALL	To be re-assessed
A887 80	LAGAIN BHAIN	Other & Formal	1	6 monthly	17.0t ALL	Currently propped. To be replaced
A887 100	ALLT NA H-INNSE BEAG	Formal	1	Yearly	17.0t ALL	To be replaced

Culvert Reference	Culvert Name	Monitoring				Comment
		Interim Measures (Formal/Other)	Class (BD 79/06 App. C)	Interval	Details	
A82 600 C10	CLIFTON	Formal	1	Yearly	17.0t ALL	Structure to be reconstructed

Retaining Wall Reference	Retaining Wall Name	Monitoring				Comment
		Interim Measures (Formal/Other)	Class (BD 79/06 App. C)	Interval	Details	
A82 1060 W99	ALTRUA WALL	Formal	1	Yearly	0.1t ALL	To be repaired
A84 90 W0	KILMAHOG	Formal	1	Yearly	38.0t ALL	To be repaired
A84 90 W15	PASS HOUSE	Formal	1	6 monthly	38.0t ALL	To be reconstructed
A86 40 W75	AUCHMORE 2	Formal	1	6 monthly	3.0t ALL	To be reconstructed
A86 200 W65	CRUINNICHIDH	Formal	1	6 monthly	3.0t ALL	To be reconstructed
A99 40 W30	ULBSTER RB	Formal	1	Yearly	0.1t ALL	To be re-assessed

This is Annex 7.6/K to Schedule 7 Part 6 referred to in the foregoing Agreement between Scottish Ministers and BEAR Scotland Limited.

SCOTTISH MINISTERS' REQUIREMENTS

SCHEDULE 7 PART 6

MANAGEMENT AND MAINTENANCE OF STRUCTURES

ANNEX 7.6/K – List of Structures with Known Defects Requiring Monitoring that are not Sub-Standard

SCOTTISH MINISTERS' REQUIREMENTS

SCHEDULE 7 PART 6

MANAGEMENT AND MAINTENANCE OF STRUCTURES

ANNEX 7.6/K – List of Structures with Known Defects Requiring Monitoring that are not Sub-Standard

Structure Reference	Structure Name	Monitoring				Comment
		Interim Measures	Class	Interval	Details	
A82 1370	EIREIGE					Visual inspection for movement.
A82 1390	BORLUM					
A82 480	DUBH EAS NORTH					Monitoring the weathering steel.
A86 60	LAGGAN					Monitoring the weathering steel.
A87 210	CLACHAN DUICH			2 yearly		Monitor to determine the rate of corrosion to sheet pile cofferdams around pier footings.
A9 1000	SPEY RIVER					Monitoring the weathering steel.
A9 1190	DULNAIN					Monitoring the weathering steel.
A9 1210	SLOCHD BEAG					Monitoring the weathering steel.
A9 1230	FINDHORN					Monitoring the weathering steel.
A9 1290	DAVIOT NEW					Monitoring the weathering steel.
A9 1755	LOTH RIVER NEW					Visual inspection of longitudinal cracking.
A9 340	ALMOND					Monitoring of previous defects.
A9 410	RIVER BRAAN					Monitoring the weathering steel.
A9 450	RIVER TAY			During PI		LPR corrosion monitoring probes installed in the cantilever slabs to determine suitability of the DCI corrosion inhibitor.
A9 550	CLUNIE			2 yearly		Visual inspection of the compression flange stiffeners.

Structure Reference	Structure Name	Monitoring				Comment
		Interim Measures	Class	Interval	Details	
A9 590	KILLIECRANKIE VIA NB					Monitor as per maintenance manual
A9 600	KILLIECRANKIE VIA SB					Monitor as per maintenance manual
A9 640	ALLT GIRNAIG					Monitoring the weathering steel.
A9 670	ESSANGAL					Monitoring the weathering steel.

Culvert Reference	Culvert Name	Monitoring				Comment
		Interim Measures	Class	Interval	Details	
A887 50 C64	ALLT RUADH					Monitor structural and road settlement.

Retaining Wall Reference	Retaining Wall Name	Monitoring				Comment
		Interim Measures	Class	Interval	Details	
A82 1380 W45	BOGLASHIN RC ANCH PL			During PI/GI		Identify early signs of movement or bulging of the masonry facing
A9 580 W36	KILLIECRANKIE D/H LB	Other		2 yearly		Monitor load cells of anchored retaining walls.
A9 580 W82	KILLIECRANKIE C/R CB	Other		2 yearly		Monitor load cells of anchored retaining walls.
A9 580 W83	KILLIECRANKIE U/H RA	Other		2 yearly		Monitor load cells of anchored retaining walls.

This is Annex 7.6/L to Schedule 7 Part 6 referred to in the foregoing Agreement between Scottish Ministers and BEAR Scotland Limited.

SCOTTISH MINISTERS' REQUIREMENTS

SCHEDULE 7 PART 6

MANAGEMENT AND MAINTENANCE OF STRUCTURES

ANNEX 7.6/L – Strengthening and Replacement Programme for the Sub-Standard Structures

SCOTTISH MINISTERS' REQUIREMENTS

SCHEDULE 7 PART 6

MANAGEMENT AND MAINTENANCE OF STRUCTURES

ANNEX 7.6/L – Strengthening and Replacement Programme for Sub-Standard Structures

Structure Ref. No.	Structure Name	Proposed Year of Works				Comments
		2012/13	2013/14	2014/15	2015/16	
A82 620	ALLT CHONOGLAIS					Works in 2011/12
A82 670	ALLT MOLACH	x				To be replaced.
A82 680	ALLT NAN GUIBHAS	x				To be replaced.
A82 690	CREAGDUBH	x	x	x	x	To be replaced.
A82 770	ALLTANRIGH	x	x	x		To be replaced.
A82 800	ACHTRIOCHTAN	x	x	x	x	To be replaced.
A82 830	ALLT FHIODHAN	x	x			To be replaced.
A830 130	GLENFINNAN					To be re-assessed.
A84 35	CAMBUS					To be re-assessed.
A87 340	BUNAN					To be re-surfaced
A87 400	BROADFORD	x	x			To be re-assessed.
A87 440	LOCH AINORT					To be re-assessed.
A87 600	LON NA H'IOLAINN	x				To be strengthened
A887 100	ALLT NA H-INNSE BEAG		x			To be replaced.
A887 40	BHLAIRAIDH					To be re-assessed.
A887 80	LAGAIN BHAIN	x				To be replaced.
A82 600 C10	CLIFTON	x				To be strengthened
A82 1060 W99	ALTRUA WALL	x	x			To be replaced.
A83 90 W25	ARDGENAVAN SOUTH 2					To be re-assessed
A83 160	TIGH CLADICH					To be repaired

Structure Ref. No.	Structure Name	Proposed Year of Works				Comments
		2012/13	2013/14	2014/15	2015/16	
W86	SOUTH					
A84 90 W0	KILMAHOG					To be repaired
A84 90 W15	PASS HOUSE	x			x	To be repaired
A86 40 W75	AUCHMORE 2	x	x			To be replaced.
A86 200 W65	CRUINNICHIDH					Currently being monitored.
A87 480 W42	SCONSER SHED		x			To be repaired
A99 40 W30	ULBSTER RB					To be re-assessed

Notes:

1. The Proposed Year of Works is subject to the availability of funding and may change at the discretion of the Director.

This is Annex 7.6/M to Schedule 7 Part 6 referred to in the foregoing Agreement between Scottish Ministers and BEAR Scotland Limited.

SCOTTISH MINISTERS' REQUIREMENTS

SCHEDULE 7 PART 6

MANAGEMENT AND MAINTENANCE OF STRUCTURES

ANNEX 7.6/M – Structures with Bridge Access Gantries and or Runway Beams

SCOTTISH MINISTERS' REQUIREMENTS

SCHEDULE 7 PART 6

MANAGEMENT AND MAINTENANCE OF STRUCTURES

ANNEX 7.6/M – Structures with Bridge Access Gantries and or Runway Beams

Structure Reference Number	Structure Name	Access Gantry	Runway Beams	Comments
A9 530	TUMMEL BRIDGE	No	Yes	Runway beams not used since first installed
A9 550	CLUNIE BRIDGE	Yes	Yes	Gantry and runway beams last used in 1994
A9 1350	KESSOCK BRIDGE	Yes	Yes (see note)	Gantry runs on rails on girder flange. Gantry used regularly
A9 1785	HELMSDALE BRIDGE	No	Yes	Runway beams not used since first installed
A82 870	BALLACHULISH BRIDGE	Yes (see note)	Yes	Gantry inoperable. Runway beams last used in 1996
A828 10	CONNEL BRIDGE	Yes (see note)	Yes	Gantry inoperable. Runway beams subject to repair
A828	CREAGAN BRIDGE	No	Yes	Runway beams commissioned in 2000

Table 7.7/M.B – Structures in the North West Unit Which Require Their Access Gantries and or Runway Beams to Remain Certified at All Times During the Contract

Structure Reference Number	Structure Name	Access Gantry	Runway Beams	Comments
A9 1350	KESSOCK BRIDGE	Yes	Yes	-

All gantries and or runway beams should be certified if they are to be used and have not previously been used for 12 months.

This is Annex 7.6/N to Schedule 7 Part 6 referred to in the foregoing Agreement between Scottish Ministers and BEAR Scotland Limited.

SCOTTISH MINISTERS' REQUIREMENTS

SCHEDULE 7 PART 6

MANAGEMENT AND MAINTENANCE OF STRUCTURES

ANNEX 7.6/N – List of Bridges with Agreement with Third Parties that Effect Existing and Future Management, Maintenance and Replacement

SCOTTISH MINISTERS' REQUIREMENTS

SCHEDULE 7 PART 6

MANAGEMENT AND MAINTENANCE OF STRUCTURES

ANNEX 7.6/N – List of Bridges with Agreement with Third Parties that Effect Existing and Future Management, Maintenance and Replacement

Structure Ref No.	Structure Name
A9 1330	RAIGMORE NAIRN RAIL
A9 1340	RAIGMORE PERTH RAIL
A9 1680	STRATHSTEVEN RAIL
A82 560	EUICH RAIL
A82 990	BASE CAMP NEW RAIL
A87 270	KYLE STATION RAIL
A828 180	BALLACHULISH HOSPITAL
A830 210	ARIENISKILL RAIL
A830 285	POLNISH NEW RAIL

Notes:

1. All structures above carry the trunk road over an operational railway line, except the Ballachulish Hospital structure. This structure carries the trunk road over a non-operational railway line.
2. The bridge agreements for the structures are held with The Director.

This is Annex 7.6/O to Schedule 7 Part 6 referred to in the foregoing Agreement between Scottish Ministers and BEAR Scotland Limited.

SCOTTISH MINISTERS' REQUIREMENTS

SCHEDULE 7 PART 6

MANAGEMENT AND MAINTENANCE OF STRUCTURES

ANNEX 7.6/O – List of Bridges with Signed Low Headroom

SCOTTISH MINISTERS' REQUIREMENTS

SCHEDULE 7 PART 6

MANAGEMENT AND MAINTENANCE OF STRUCTURES

ANNEX 7.6/O – List of Bridges with Signed Low Headroom

Bridge Code	Bridge Name	Actual Minimum Headroom
A82 840	BALLACHULISH HARBOUR	4.94
A9 1210	SLOCHD BEAG	3
A9 1459	KILDARY	4.35

This is Annex 7.6/P to Schedule 7 Part 6 referred to in the foregoing Agreement between Scottish Ministers and BEAR Scotland Limited.

SCOTTISH MINISTERS' REQUIREMENTS

SCHEDULE 7 PART 6

MANAGEMENT AND MAINTENANCE OF STRUCTURES

ANNEX 7.6/P – List of Structures subject to Frequent Bridges Strikes with dates of Incidents Since 2001

SCOTTISH MINISTERS' REQUIREMENTS

SCHEDULE 7 PART 6

MANAGEMENT AND MAINTENANCE OF STRUCTURES

ANNEX 7.6/P – List of Structures subject to Frequent Bridges Strikes with dates of Incidents Since 2001

Structure Ref No.	Structure Name	Damage Description	Date
A9 1300	INSHES OVERBRIDGE	Scrapes to steel beam flange.	08/11/2002
A9 1459	KILDARY UNDERBRIDGE	Concrete soffit damage.	08/05/2003
A82 870	BALLACHULISH	Damage to uplink box girder.	17/04/2007
A9 1459	KILDARY UNDERBRIDGE	PC Concrete Beam Damaged.	05/06/2007
A828 10	CONNEL BRIDGE	Beam 43 damaged.	18/07/2007
A828 10	CONNEL BRIDGE	Minor scrape.	27/07/2007
A828 10	CONNEL BRIDGE	Beam Damage.	18/03/2008
A82 1230	ABERCHALDER SWING BR	Beam Soffit Damage.	25/08/2008