

Figure 9.2a

Legend

- Proposed scheme (DMRB Stage 3)
- SuDS
- Boundaries of the Site
- 200m Study Area
- Historic Landscape Types (HLT)**
 - 18th Century to Present Rectilinear Fields and Farms (HLT 1)
 - 18th Century to Present Transport (HLT 15)
 - 18th to 19th Century Industrial Planned Village (HLT 5)
 - 19th Century to Present Quarry (HLT 30)
 - 19th Century to Present Urban Areas (HLT 4)
 - 20th Century to Present Plantation (HLT 3)
 - Dunkeld Battlefield (HLT 11)
 - Dunkeld House Garden and Designed Landscape (HLT 19)
 - Freshwater Area (HLT 17)
 - Industrial or Commercial Areas (HLT 26)
 - Managed Woodland (HLT 2)
 - Murthly Castle Garden and Designed Landscape (HLT 14)
 - Medieval Village (HLT 7)
 - Recreation Areas (HLT 6)
 - Rough Grazing (HLT 10)
 - The Hermitage Garden and Designed Landscape (HLT 20)

P03	MAY 2025	For Stage Approval	MM	JD	GK	EM
Rev.	Rev. Date	Purpose of revision	Orig/Dwn	Checked	Rev'd	Apprv'd

Jacobs
95 Bothwell Street, Glasgow G2 7EX, UK.
Tel: +44(0)141 243 8000
www.jacobs.com

Client

Project

A9 DUALLING
TAY CROSSING TO BALLINLUIG

Drawing title

Historic Landscape Types

Sheet 1 of 2

Drawing Status	S4 – For Stage Approval
Scale	1:25,000 @ A3 DO NOT SCALE
Jacobs No.	B2140002
BIM No.	A9P02-JAC-EHR-D_ZZZZZ_ZZ-FG-EN-0002
Drawing number	Figure 9.2a
Rev	P03

© Crown copyright and database right 2025. You may re-use this information (excluding logos) free of charge in any format or medium, under the terms of the Open Government Licence. To view this licence, visit <http://www.nationalarchives.gov.uk/doc/open-government-licence/> or e-mail: psi@nationalarchives.gsi.gov.uk. Where we have identified any third party copyright information you will need to obtain permission from the copyright holders concerned. Limitation: This drawing has been prepared on behalf of, and for the exclusive use of Jacobs' Client, and is subject to, and issued in accordance with, the provisions of the contract between Jacobs and the Client. Jacobs accepts no liability or responsibility whatsoever for, or in respect of, any use of, or reliance upon, this drawing by any third party.

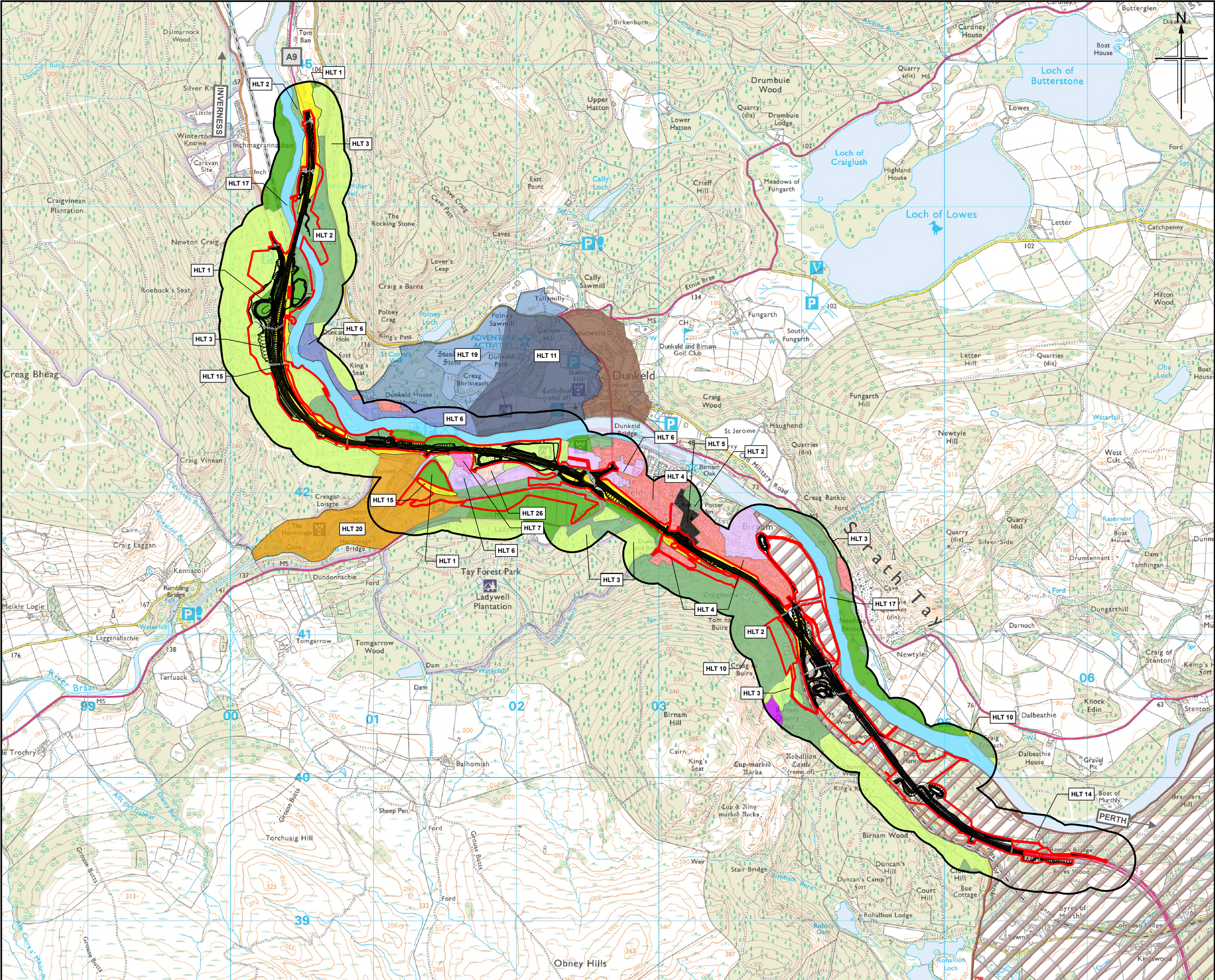


Figure 9.2b

Legend

- Proposed scheme (DMRB Stage 3)
- SuDS
- Boundaries of the Site
- 200m Study Area
- Historic Landscape Types (HLT)**
 - 18th Century to Present Rectilinear Fields and Farms (HLT 1)
 - 18th Century to Present Transport (HLT 15)
 - 18th to 19th Century Industrial Planned Village (HLT 5)
 - 19th Century to Present Quarry (HLT 30)
 - 19th Century to Present Urban Areas (HLT 4)
 - 20th Century to Present Plantation (HLT 3)
 - Dunkeld Battlefield (HLT 11)
 - Dunkeld House Garden and Designed Landscape (HLT 19)
 - Freshwater Area (HLT 17)
 - Industrial or Commercial Areas (HLT 26)
 - Managed Woodland (HLT 2)
 - Murthly Castle Garden and Designed Landscape (HLT 14)
 - Medieval Village (HLT 7)
 - Recreation Areas (HLT 6)
 - Rough Grazing (HLT 10)
 - The Hermitage Garden and Designed Landscape (HLT 20)

P03	MAY 2025	For Stage Approval	MM	JD	GK	EM
Rev.	Rev. Date	Purpose of revision	Orig/Dwn	Checked	Rev'd	Apprv'd

Jacobs
95 Bowhill Street, Glasgow G2 7HX, UK.
Tel: +44(0)141 243 8000
www.jacobs.com

Client

TRANSPORT SCOTLAND
COMHAIL ALBA

Project

A9
DUALLING
TAY CROSSING TO BALLINLUIG

Drawing title
Historic Landscape Types

Sheet 2 of 2

Drawing Status	S4 – For Stage Approval
Scale	1:25,000 @ A3 DO NOT SCALE
Jacobs No.	B2140002
BIM No.	A9P02-JAC-EHR-D_ZZZZZ_ZZ-FG-EN-0002
Drawing number	Figure 9.2b
Rev	P03

© Crown copyright and database right 2025. You may re-use this information (excluding logos) free of charge in any format or medium, under the terms of the Open Government Licence. To view this licence, visit <http://www.nationalarchives.gov.uk/open-government-licence/> or e-mail: psi@nationalarchives.gov.uk. Where we have identified any third party copyright information you will need to obtain permission from the copyright holders concerned. Limitation: This drawing has been prepared on behalf of, and for the exclusive use of Jacobs' Client, and is subject to, and issued in accordance with, the provisions of the contract between Jacobs and the Client. Jacobs accepts no liability or responsibility whatsoever for, or in respect of, any use of, or reliance upon, this drawing by any third party.