



TRANSPORT
SCOTLAND
CÒMHDHAIL ALBA

transport.gov.scot

Islands Connectivity Plan

Easy Read Version

Contents

Contents.....	2
Islands Connectivity Plan.....	3
The Strategic Approach	4
Themes	7
Monitoring and Evaluation.....	10
Vessels and Ports Plan.....	11
To achieve this, the Plan says that we should:.....	11
Investment- the money we will spend on ferries.....	13

Islands Connectivity Plan

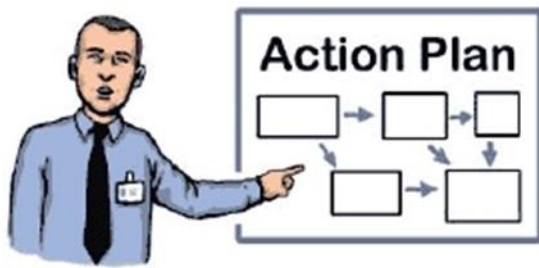


The Islands Connectivity Plan is Transport Scotland's plan to improve ferry services, connecting mainland Scotland and the Scottish islands. It also considers other ways to travel such as by plane, bridge or causeway.



It includes a Strategic Approach document and several more detailed plans, including for new vessels called Vessels and Ports Plan and for monitoring success of the Plan.

The Strategic Approach



The Strategy suggests that in future



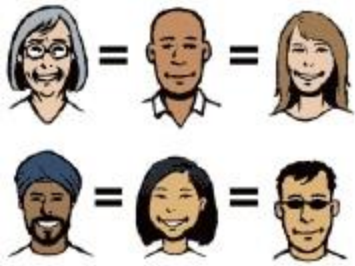
People will know how long a journey will take, and that it will be a simple and comfortable experience.



People and goods will get to where they need to be.



People will understand why decisions about ferries, that affect their daily lives are being made.



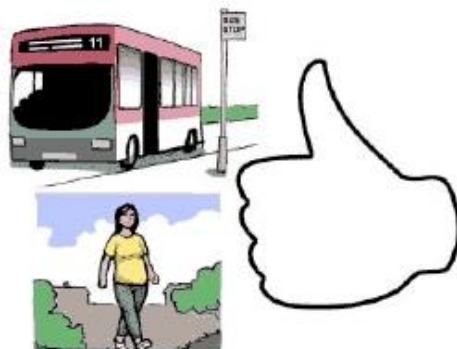
People will be treated equally.



People have different needs and capabilities. We want everyone to be able to use the services with as few barriers as possible.



Ferries will be affordable.



People will be able to make sustainable and active travel choices.



Ferry services and other transport modes will connect better.



Our island and other places which rely on ferries will be great places to live, work and visit.

Themes

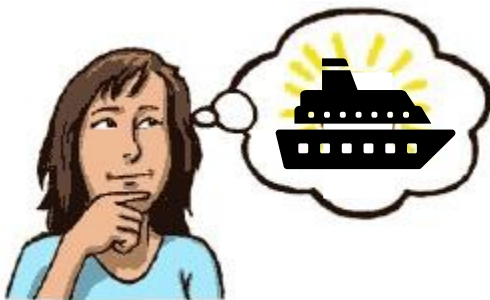
The Strategy has actions that will achieve these goals. It splits those actions into 12 themes which island communities said needed to be better.



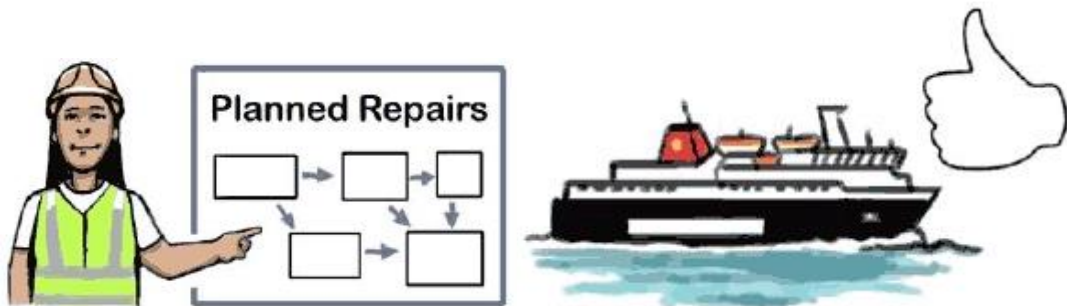
1. **Understanding Connectivity Needs:** Finding out the transport needs of each island community to plan better services.



2. **Community Voice and Transparency:** Speaking to communities and listening to them.



3. **Capacity and Demand:** Planning how to carry the people and vehicles that will be using ferries.



4. **Reliability and Resilience:** Improving the reliability of services and coping better when there are disruptions.



5. **Accessibility:** Making services accessible to everyone, including people with disabilities.

TIMETABLE				

6. **Timetables and Essential Travel:** Changing timetables to meet the needs of people living and working on islands.



7. **Integration:** Connecting ferry services with other transport like buses and trains.



8. **Freight:** Helping move goods and services to and from islands,



9. **Vessels and Ports:** Replacing and looking after ferries and ports.



10. **Environmental Impact and Low Carbon:** Reducing damaging emissions and protecting the environment.

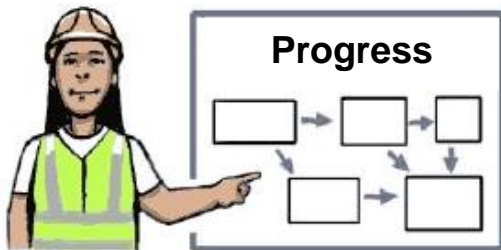


11. **Fares:** Keeping cost of ferry services affordable.



12. Local Authority Ferry Services: working with local authorities in managing their ferry services.

Monitoring and Evaluation



We will regularly check that the plan is meeting the needs of island communities. If not, we will change it.

Vessels and Ports Plan

**Caledonian
MacBrayne**

NorthLink ferries



This Vessels and Ports Plan is for the Caledonian MacBrayne also called CalMac ferries which operate on the west coast of Scotland and the Serco NorthLink ferries which link the Scottish mainland to the Orkney and Shetland isles.



Island communities told us that the most important thing about ferries is that they are reliable and resilient.

To achieve this, the Plan says that we should:



Replace old ferries and rebuild old ports so that we have modern ships and modern ports.



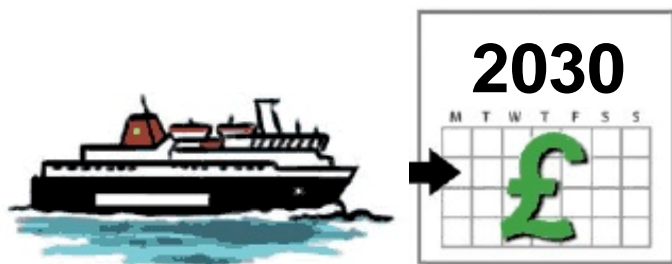
Build ferries that are more reliable in bad weather do not breakdown.



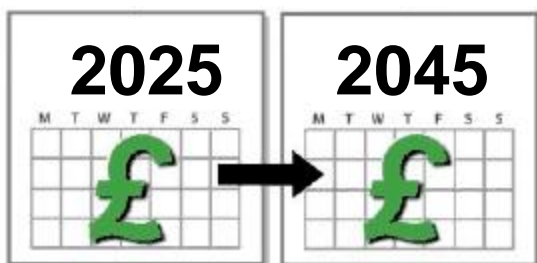
Make ferries and ports easier for people to use, including people with disabilities.



Build more ferries that are the same size and shape so that they be used on routes to different islands. This will help make sure services continue when ships are being repaired.



Have one big spare ship until 2030.



All of this will need a lot of money over the next 20 years.

Investment- the money we will spend on ferries



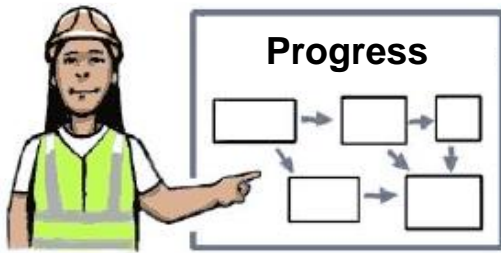
The money to pay for ships and ports comes from people paying to use the ferries and from people's taxes.



We will find out where this money is needed the most.



We will tell island communities how those decisions were made.



We will check every 2 or 3 years that this plan is still the right one and write a new version every 5 years.



**TRANSPORT
SCOTLAND**
CÒMHDHAIL ALBA

© Crown copyright 2025

You may re-use this information (excluding logos and images) free of charge in any format or medium, under the terms of the [Open Government Licence](#).

Where we have identified any third party copyright information you will need to obtain permission from the copyright holders concerned.

Further copies of this document are available, on request, in audio and visual formats and in community languages. Any enquiries regarding this document/publication should be sent to us at info@transport.gov.scot.

Published by Transport Scotland, June 2025

Follow us:



transcotland



@transcotland

transport.gov.scot