

- Legend**
- Proposed scheme (DMRB Stage 3)
 - SuDS
 - 500m Study Area
 - Community Land and Assets**
 - Community Assets
 - Community Land
 - Bus Stops

| | | | | | | |
|------|-----------|---------------------|----------|--------|-------|---------|
| P03 | MAY 2025 | For Stage Approval | MM | GK | GK | EM |
| Rev. | Rev. Date | Purpose of revision | Orig/Dwn | Checkd | Rev'd | Apprv'd |

Jacobs
95 Bothwell Street, Glasgow, G2 7PL, UK.
Tel: +44(0)141 243 8000
www.jacobs.com

Client

TRANSPORT SCOTLAND
COMHIDHAIL ALBA

Project

A9 DUALLING
PASS OF BIRNAM TO TAY CROSSING

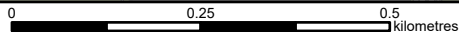
Drawing title

Environmental Impact Assessment Report
Community Land and Community Assets

Sheet 1 of 4

| | | | |
|----------------|-------------------------------------|------|--------------|
| Drawing Status | S4 – For Stage Approval | | DO NOT SCALE |
| Scale | 1:10,000 | @ A3 | |
| Jacobs No. | B2140002 | | |
| BIM No. | A9P02-JAC-EGN-D_ZZZZZ_ZZ-FG-EN-0001 | | |
| Drawing number | Figure 16.1a | | Rev P03 |

© Crown copyright 2025. You may re-use this information (excluding logos) free of charge in any format or medium, under the terms of the Open Government Licence. To view this licence, visit <http://www.nationalarchives.gov.uk/doc/open-government-licence/> or e-mail: psi@nationalarchives.gsi.gov.uk. Where we have identified any third party copyright information you will need to obtain permission from the copyright holders concerned. Limitation: This drawing has been prepared on behalf of, and for the exclusive use of Jacobs' Client, and is subject to, and issued in accordance with, the provisions of the contract between Jacobs and the Client. Jacobs accepts no liability or responsibility whatsoever for, or in respect of, any use of, or reliance upon, this drawing by any third party.



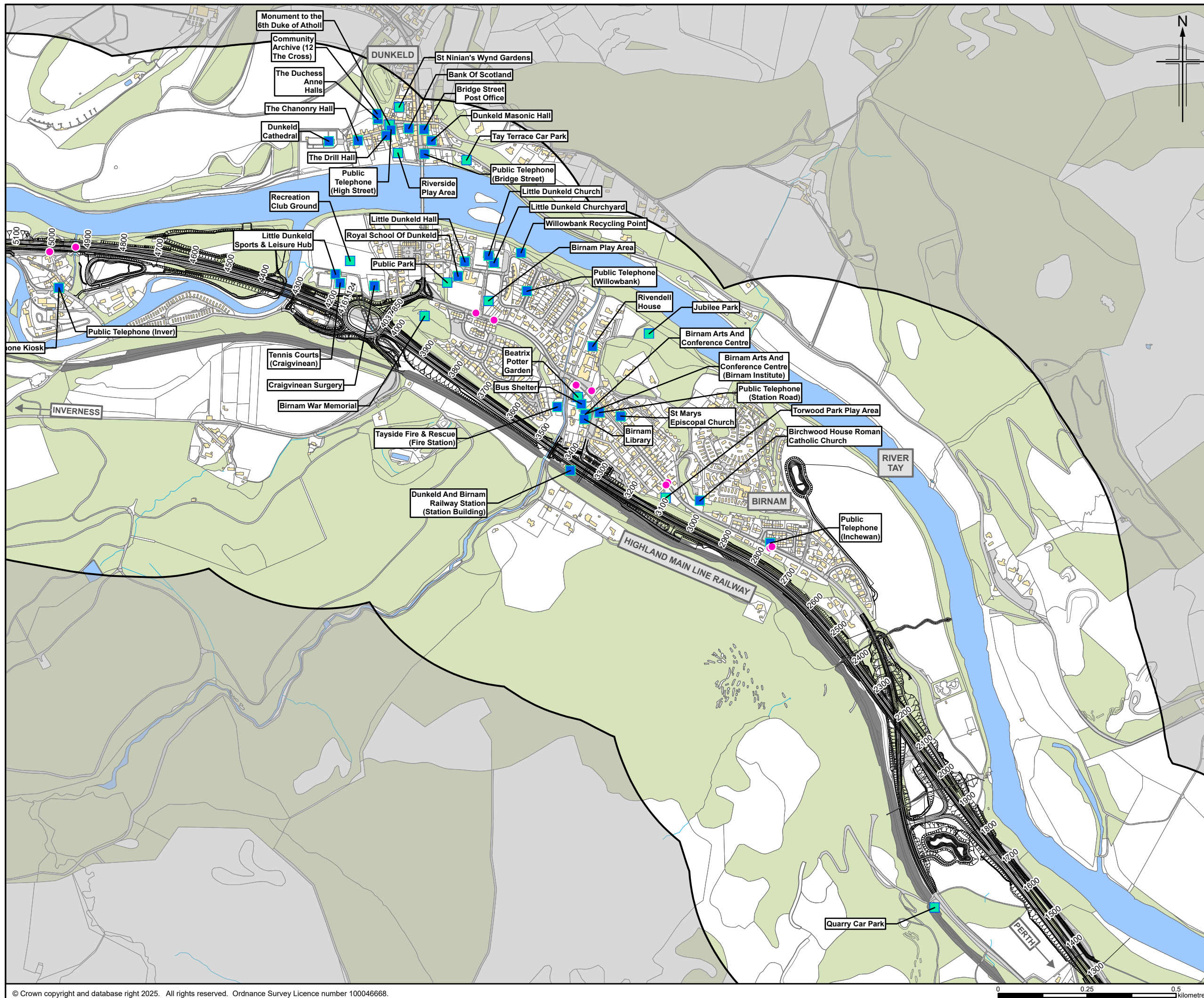
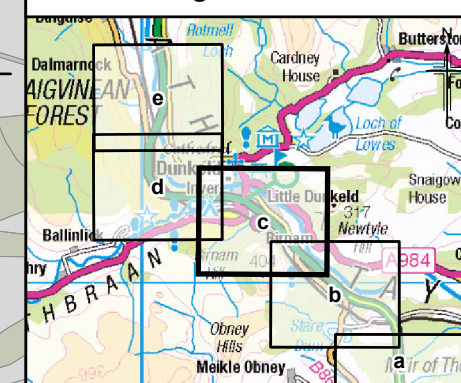


Figure 16.1b






Legend

- ≡ Proposed scheme (DMRB Stage 3)

SuDS

 500m Study Area

Community Land and Assets

-  Community Assets
-  Community Land
-  Bus Stops

| | | | | | | |
|------|-----------|---------------------|----------|--------|-------|------|
| P03 | MAY 2025 | For Stage Approval | MM | GK | GK | EM |
| Rev. | Rev. Date | Purpose of revision | Orig/Dwn | Checkd | Rev'd | Appr |

Jacobs

95 Bothwell Street, Glasgow, G2 7HX, UK
Tel: +44(0)141 243 8000
www.iacobs.com

Client



TRANSPORT
SCOTLAND
CÒMHAIL A

| | |
|---------|--|
| Project | |
|---------|--|



Drawing title

**Environmental Impact Assessment Report
Community Land and Community Assets**

Sheet 2 of 4

| | | | |
|----------------|-------------------------------------|------|--------------|
| Drawing Status | S4 – For Stage Approval | | |
| Scale | 1:10,000 | @ A3 | DO NOT SCALE |
| Jacobs No. | B2140002 | | |
| BIM No. | A9P02-JAC-EGN-D_ZZZZZ_ZZ-FG-EN-0001 | | |
| Drawing number | Figure 16.1b | | |

© Crown copyright 2025. You may re-use this information (excluding logos) free of charge in any format or medium, under the terms of the Open Government Licence. To view this licence visit <http://www.nationalarchives.gov.uk/doc/open-government-licence/> or e-mail: psi@nationalarchives.gsi.gov.uk. Where we have identified any third party copyright information you will need to obtain permission from the copyright holders concerned.

Limitation: This drawing has been prepared on behalf of, and for the exclusive use of Jacobus Client, and is subject to, and issued in accordance with, the provisions of the contract between Jacobs and the Client. Jacobs accepts no liability or responsibility whatsoever for, or in respect of, any use of, or reliance upon, this drawing by any third party.





Figure 16.1c

Legend

- Proposed scheme (DMRB Stage 3)
- SuDS
- 500m Study Area
- Community Land and Assets**
- Community Assets
- Community Land
- Bus Stops

| | | | | | | |
|------|-----------|---------------------|----------|--------|-------|---------|
| P03 | MAY 2025 | For Stage Approval | MM | GK | GK | EM |
| Rev. | Rev. Date | Purpose of revision | Orig/Dwn | Checkd | Rev'd | Apprv'd |

Jacobs
95 Bothwell Street, Glasgow G2 7HX, UK.
Tel: +44(0)141 243 8000
www.jacobs.com

Client

TRANSPORT SCOTLAND
COMHIDHAIL ALBA

Project

A9 DUALLING
PASS OF BIRNAM TO TAY CROSSING

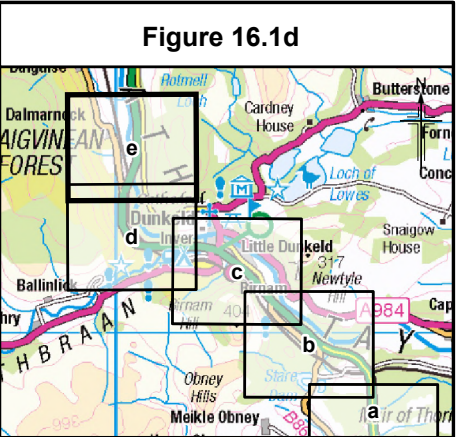
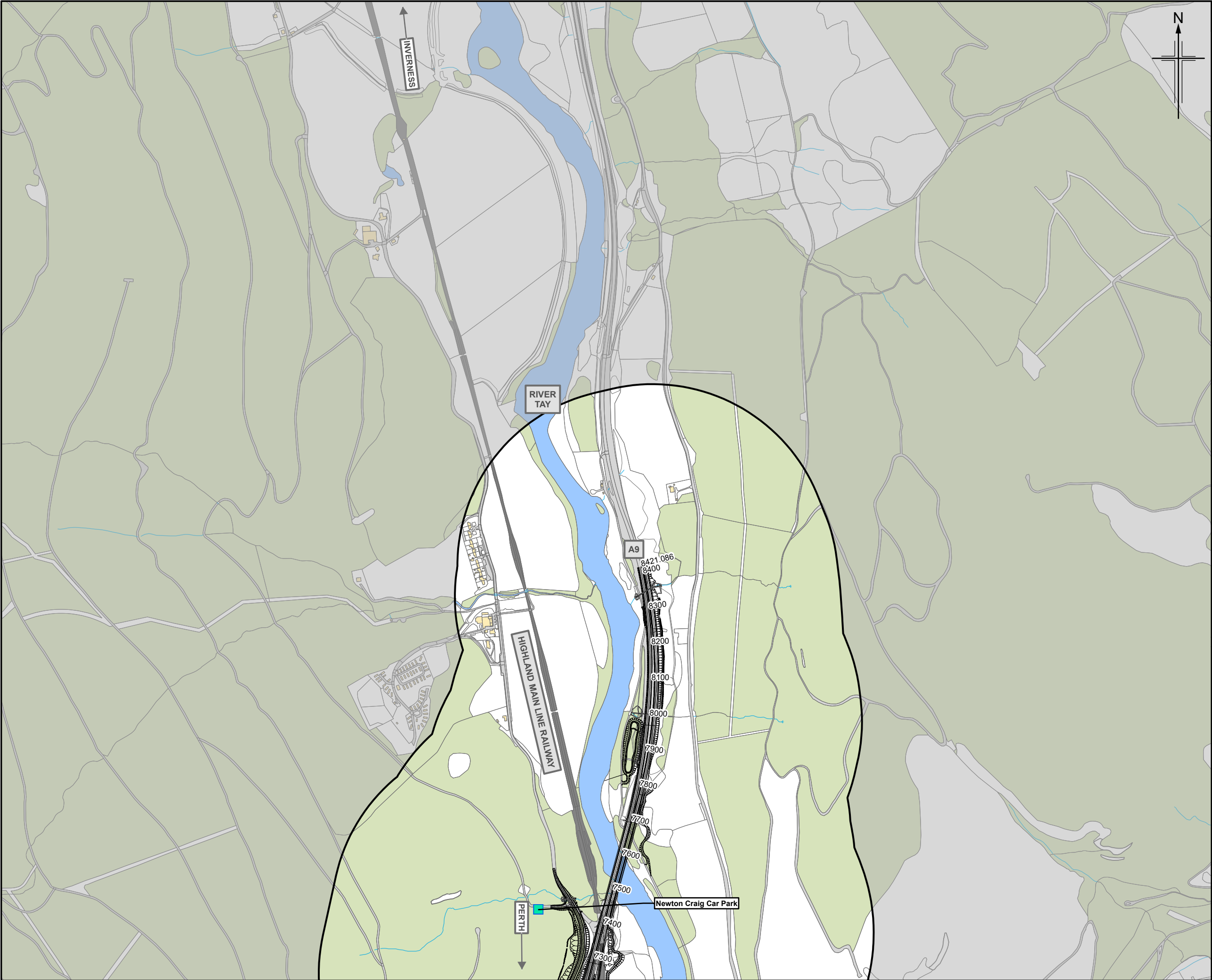
Drawing title

**Environmental Impact Assessment Report
Community Land and Community Assets**

Sheet 3 of 4

| | | |
|----------------|-------------------------------------|--------------|
| Drawing Status | S4 – For Stage Approval | |
| Scale | 1:10,000 @ A3 | DO NOT SCALE |
| Jacobs No. | B2140002 | |
| BIM No. | A9P02-JAC-EGN-D_ZZZZZ_ZZ-FG-EN-0001 | |
| Drawing number | Figure 16.1c | Rev P03 |

© Crown copyright 2025. You may re-use this information (excluding logos) free of charge in any format or medium, under the terms of the Open Government Licence. To view this licence, visit <http://www.nationalarchives.gov.uk/doc/open-government-licence/> or e-mail: psi@nationalarchives.gsi.gov.uk. Where we have identified any third party copyright information you will need to obtain permission from the copyright holders concerned.
Limitation: This drawing has been prepared on behalf of, and for the exclusive use of Jacobs' Client, and is subject to, and issued in accordance with, the provisions of the contract between Jacobs and the Client. Jacobs accepts no liability or responsibility whatsoever for, or in respect of, any use of, or reliance upon, this drawing by any third party.



- Legend**
- Proposed scheme (DMRB Stage 3)
 - SuDS
 - 500m Study Area
 - Community Land and Assets**
 - Community Assets
 - Community Land
 - Bus Stops

| P03 | MAY 2025 | For Stage Approval | MM | GK | GK | EM |
|------|-----------|---------------------|----------|--------|-------|---------|
| Rev. | Rev. Date | Purpose of revision | Orig/Dwn | Checkd | Rev'd | Apprv'd |

Jacobs
95 Bothwell Street, Glasgow, G2 7HX, UK.
Tel: +44(0)141 243 8000
www.jacobs.com



Environmental Impact Assessment Report
Community Land and Community Assets

Sheet 4 of 4

| | | | |
|----------------|------------------------------------|--------------|-----|
| Drawing Status | S4 – For Stage Approval | Rev | P03 |
| Scale | 1:10,000 @ A3 | DO NOT SCALE | |
| Jacobs No. | B2140002 | | |
| BIM No. | A9P02-JAC-EGN-D_ZZZZ_ZZ-FG-EN-0001 | | |
| Drawing number | Figure 16.1d | | |