

Figure 13.2a

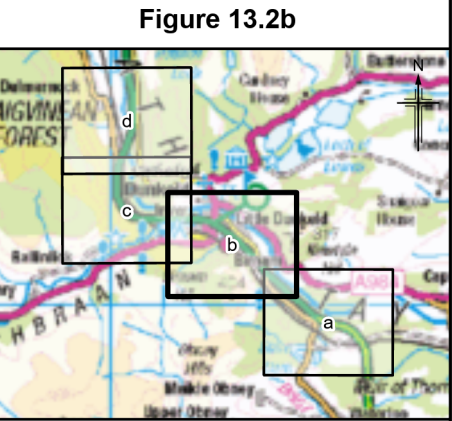
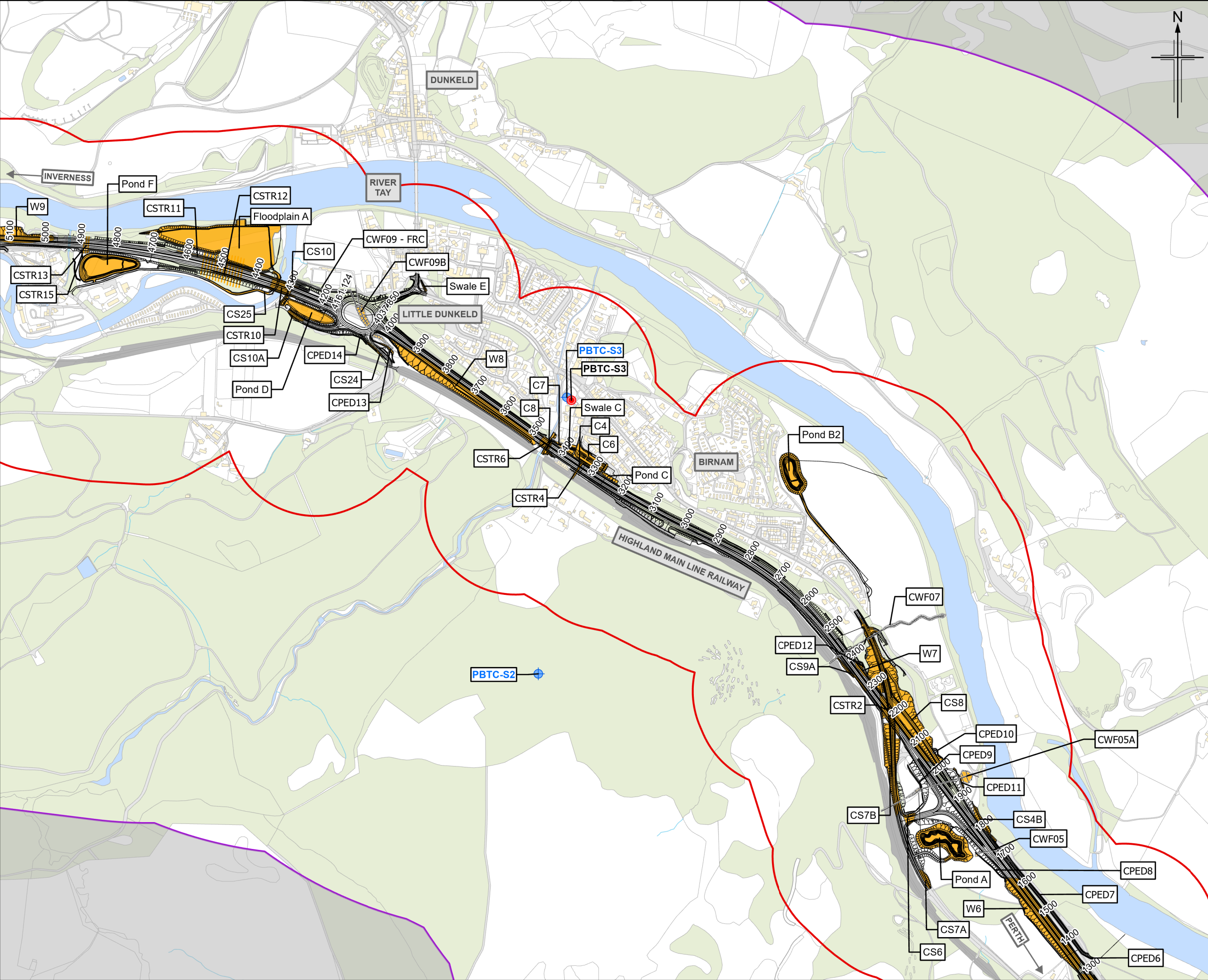
Legend

- Proposed scheme (DMRB Stage 3)
- SuDS
- 250m Study Area
- 1200m Study Area
- Geological Conservation Review (GCR) site
- Private Water Supply (PWS)
 - PWS: Groundwater source
 - Spring
 - Well

P03	MAY 2025	For Stage Approval	PM	LR	GK	EM
Rev.	Rev. Date	Purpose of revision	Orig/Dwn	Checkd	Rev'd	Apprv'd
<div>Jacobs 95 Bothwell Street, Glasgow G2 7HX, UK. Tel: +44(0)141 243 8000 www.jacobs.com</div>						
<div>Client </div>						
<div>Project PASS OF BIRNAM TO TAY CROSSING</div>						
<div>Drawing title Environmental Impact Assessment Report Private Water Supplies and Geological Constraints Sheet 1 of 4</div>						
Drawing Status			S4 – For Stage Approval			
Scale			1:10,000 @ A3		DO NOT SCALE	
Jacobs No.			B2140002			
BIM No.			A9P02-JAC-EGT-D_ZZZZZ_ZZ-FG-EN-0002			
Drawing number			Figure 13.2a			Rev P03

© Crown copyright and database right 2025. You may re-use this information (excluding logos) free of charge in any format or medium, under the terms of the Open Government Licence. To view this licence, visit <http://www.nationalarchives.gov.uk/doc/open-government-licence/> or e-mail psi@nationalarchives.gsi.gov.uk. Where we have identified any third party copyright information you will need to obtain permission from the copyright holders concerned.

Limitation: This drawing has been prepared on behalf of, and for the exclusive use of Jacobs' Client, and is subject to, and issued in accordance with, the provisions of the contract between Jacobs and the Client. Jacobs accepts no liability or responsibility whatsoever for, or in respect of, any use of, or reliance upon, this drawing by any third party.



- Legend**
- Proposed scheme (DMRB Stage 3)
 - SuDS
 - 250m Study Area
 - 1200m Study Area
 - Geological Conservation Review (GCR) site
 - Private Water Supply (PWS)
 - PWS: Groundwater source
 - Spring
 - Well

P03	MAY 2025	For Stage Approval	PM	LR	GK	EM
Rev.	Rev. Date	Purpose of revision	Orig/Dwn	Checkd	Rev'd	Apprv'd

Jacobs

95 Bothwell Street, Glasgow G2 7HX, UK.
Tel: +44(0)141 243 8000
www.jacobs.com



Drawing title

**Environmental Impact Assessment Report
Private Water Supplies
and Geological Constraints**

Sheet 2 of 4

Drawing Status	S4 – For Stage Approval	DO NOT SCALE
Scale	1:10,000 @ A3	
Jacobs No.	B2140002	
BIM No.	A9P02-JAC-EGT-D_ZZZZZ_ZZ-FG-EN-0002	
Drawing number	Figure 13.2b	Rev P03

© Crown copyright and database right 2025. You may re-use this information (excluding logos) free of charge in any format or medium, under the terms of the Open Government Licence. To view this licence, visit <http://www.nationalarchives.gov.uk/doc/open-government-licence/> or e-mail psi@nationalarchives.gov.uk. Where we have identified any third party copyright information you will need to obtain permission from the copyright holders concerned. Limitation: This drawing has been prepared on behalf of, and for the exclusive use of Jacobs' Client, and is subject to, and issued in accordance with, the provisions of the contract between Jacobs and the Client. Jacobs accepts no liability or responsibility whatsoever for, or in respect of, any use of, or reliance upon, this drawing by any third party.

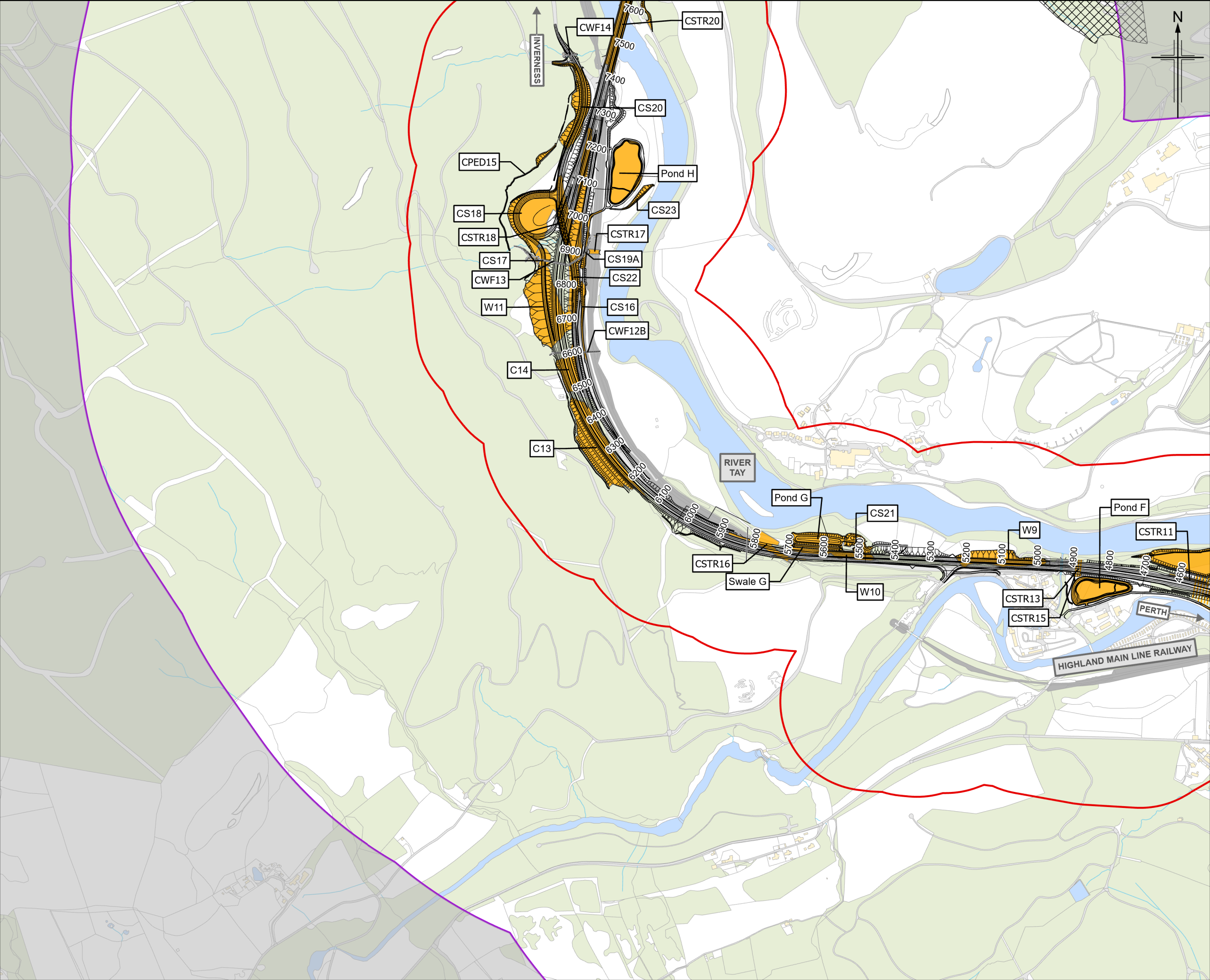


Figure 13.2c

Legend

- Proposed scheme (DMRB Stage 3)
- SuDS
- 250m Study Area
- 1200m Study Area
- Geological Conservation Review (GCR) site
- Private Water Supply (PWS)
 - PWS: Groundwater source
 - Spring
 - Well

P03	MAY 2025	For Stage Approval	PM	LR	GK	EM
Rev.	Rev. Date	Purpose of revision	Orig/Dwn	Checked	Rev'd	Apprv'd
<div><p>95 Bothwell Street, Glasgow, G2 7HX, UK. Tel: +44(0)141 243 8000 www.jacobs.com</p></div>						
<div><p>TRANSPORT SCOTLAND COIMHIGHEAL ALBA</p></div>						
<div><p>A9 DUALLING PASS OF BIRNAM TO TAY CROSSING</p></div>						
<p>Environmental Impact Assessment Report Private Water Supplies and Geological Constraints</p> <p>Sheet 3 of 4</p>						
Drawing Status			S4 – For Stage Approval			
Scale	1:10,000		@ A3	DO NOT SCALE		
Jacobs No.	B2140002					
BIM No.	A9P02-JAC-EGT-D_ZZZZZ_ZZ-FG-EN-0002					
Drawing number	Figure 13.2c					Rev P03

© Crown copyright 2025. You may re-use this information (excluding logos) free of charge in any format or medium, under the terms of the Open Government Licence. To view this licence, visit <http://www.nationalarchives.gov.uk/doc/open-government-licence/> or e-mail psi@nationalarchives.gsi.gov.uk. Where we have identified any third party copyright information you will need to obtain permission from the copyright holders concerned. Limitation: This drawing has been prepared on behalf of, and for the exclusive use of Jacobs' Client, and is subject to, and issued in accordance with, the provisions of the contract between Jacobs and the Client. Jacobs accepts no liability or responsibility whatsoever for, or in respect of, any use of, or reliance upon, this drawing by any third party.

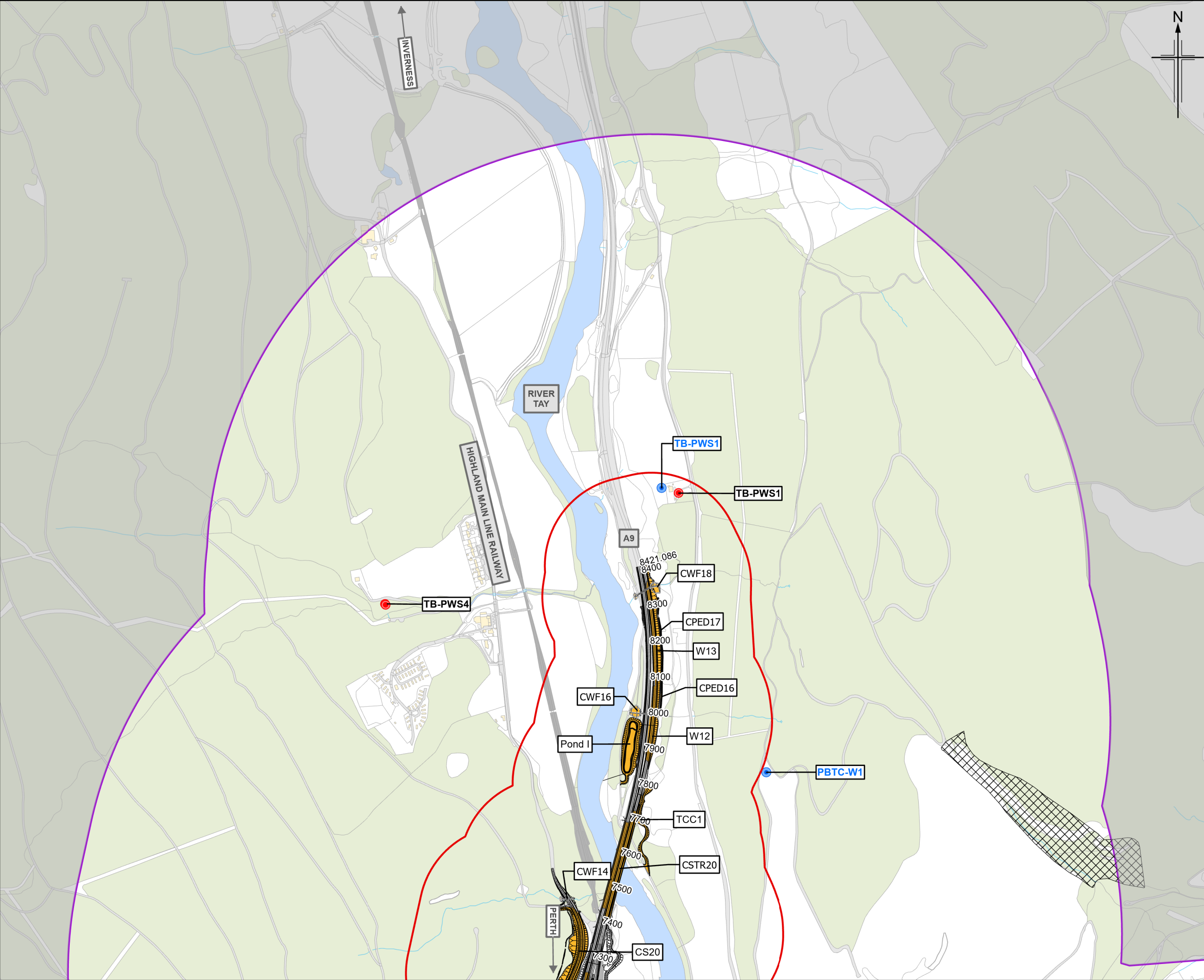


Figure 13.2d

Legend

- Proposed scheme (DMRB Stage 3)
- SuDS
- 250m Study Area
- 1200m Study Area
- Geological Conservation Review (GCR) site
- Private Water Supply (PWS)
 - PWS: Groundwater source
 - Spring
 - Well

P03	MAY 2025	For Stage Approval	PM	LR	GK	EM
Rev.	Rev. Date	Purpose of revision	Orig/Dwn	Checkd	Rev'd	Apprv'd

Jacobs

95 Bothwell Street, Glasgow, G2 7HX, UK.
Tel: +44(0)141 243 8000
www.jacobs.com

Client

TRANSPORT SCOTLAND
COIMHDAIL ALBA

Project

A9 DUALLING
PASS OF BIRNAM TO TAY CROSSING

Drawing title

**Environmental Impact Assessment Report
Private Water Supplies
and Geological Constraints**

Sheet 4 of 4

Drawing Status	S4 – For Stage Approval	
Scale	1:10,000 @ A3	DO NOT SCALE
Jacobs No.	B2140002	
BIM No.	A9P02-JAC-EGT-D_ZZZZZ_ZZ-FG-EN-0002	

Drawing number	Figure 13.2d	Rev	P03
----------------	--------------	-----	-----

© Crown copyright 2025. You may re-use this information (excluding logos) free of charge in any format or medium, under the terms of the Open Government Licence. To view this licence, visit <http://www.nationalarchives.gov.uk/doc/open-government-licence/> or e-mail psi@nationalarchives.gov.uk. Where we have identified any third party copyright information you will need to obtain permission from the copyright holders concerned. Limitation: This drawing has been prepared on behalf of, and for the exclusive use of Jacobs' Client, and is subject to, and issued in accordance with, the provisions of the contract between Jacobs and the Client. Jacobs accepts no liability or responsibility whatsoever for, or in respect of, any use of, or reliance upon, this drawing by any third party.