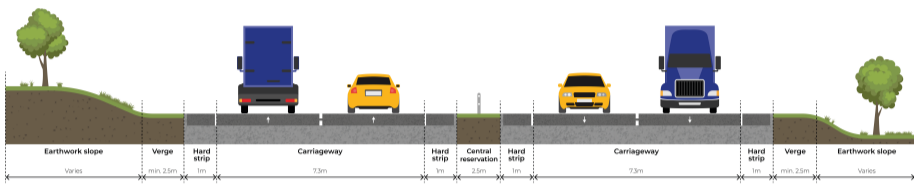


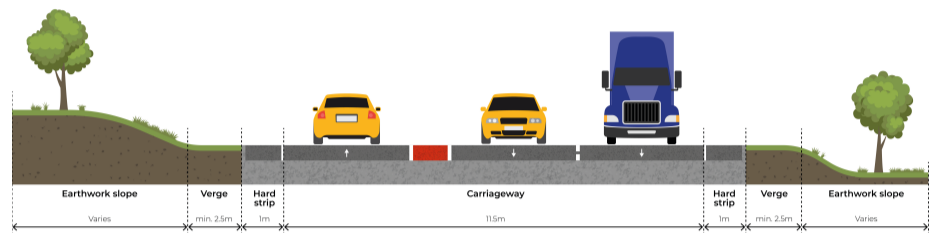
## Potential Cross-section and Junction Types

The following cross-section types have been considered as part of the ongoing assessment process:

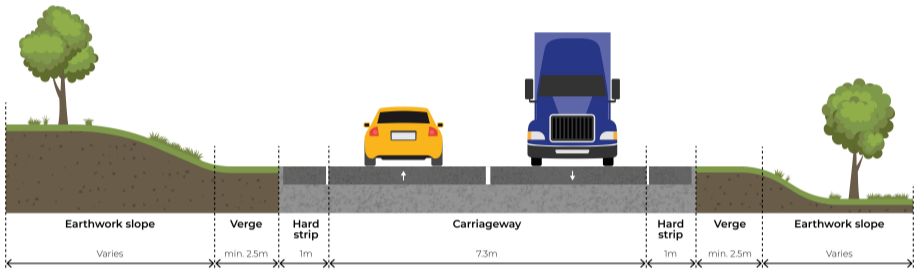
**Dual Carriageway** (end-to-end, along the full length of the route option)



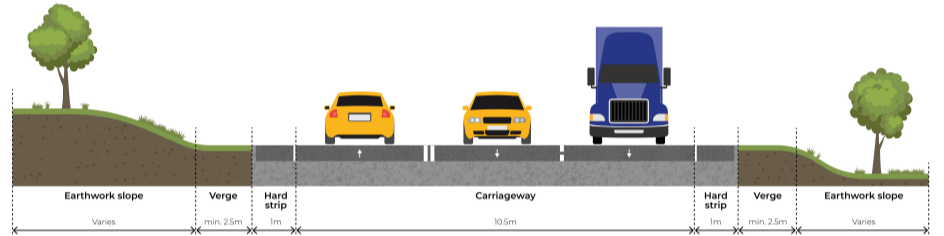
**WS2+1 Carriageway** (end-to-end, along the full length of the route option)



**Single Carriageway**



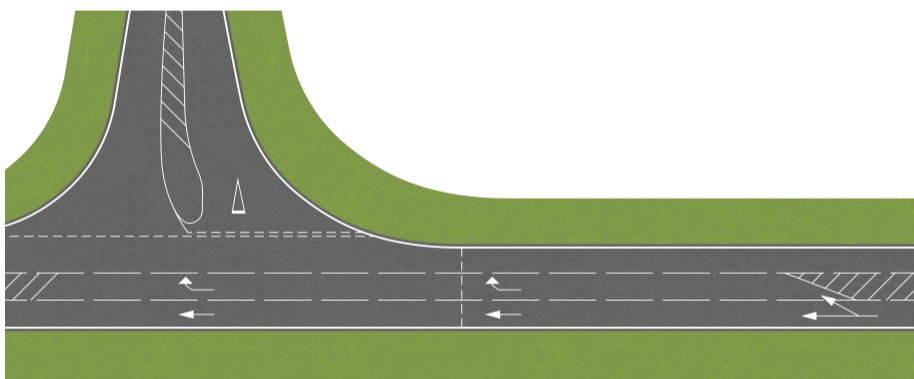
**Single Carriageway** (including overtaking opportunities through the provision of an additional lane)



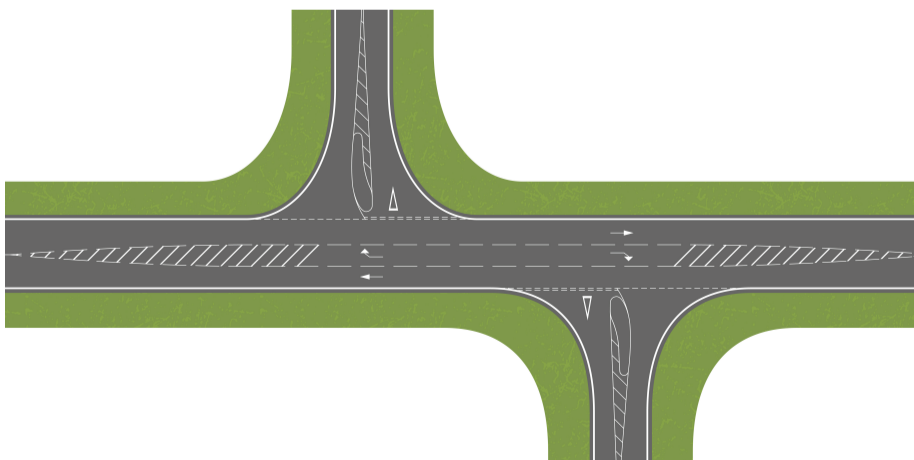
The following junction types have been considered for the tie-in between the existing and proposed A75 as part of the ongoing assessment process.

It is important to note that all route option designs shown on the following banners are at an early stage of development and are subject to change as the design progresses. In particular, the form and layout of junctions and accesses are indicative and will be subject to change.

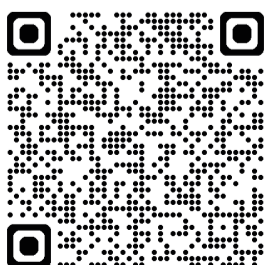
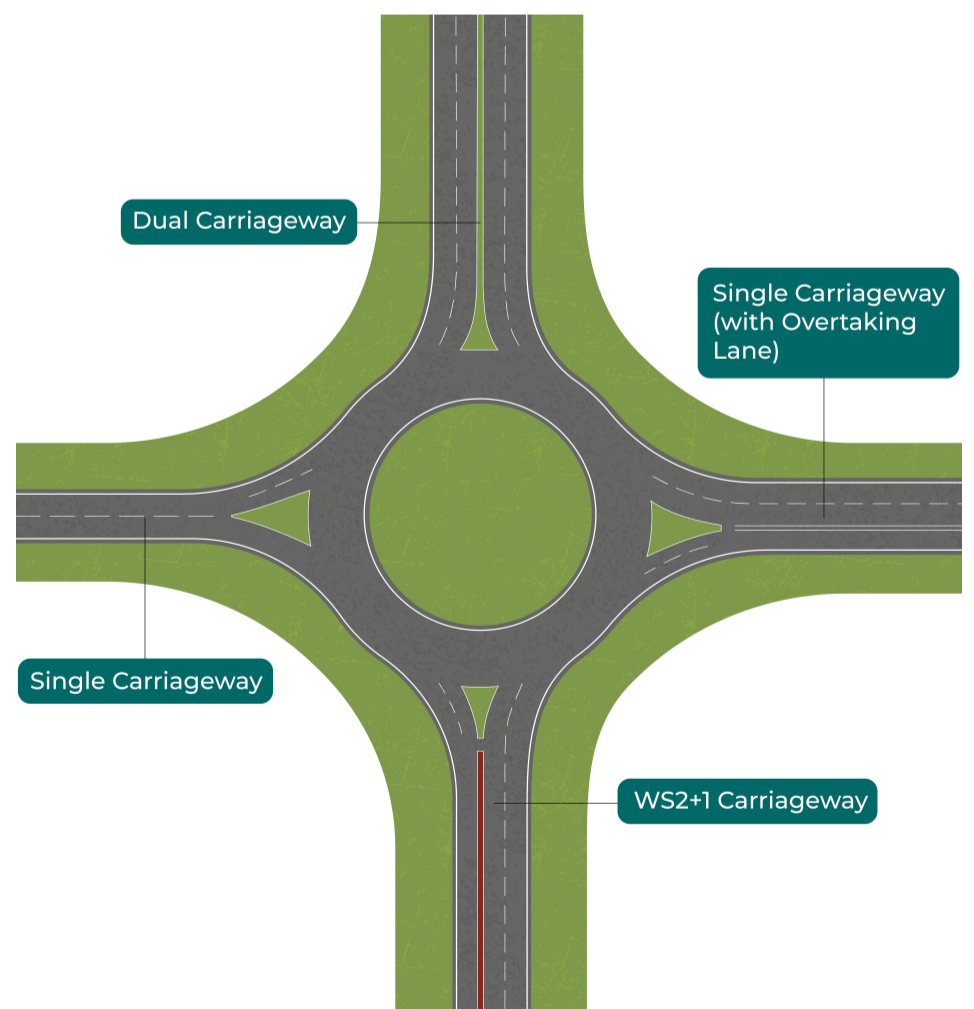
**Priority Junction**



**Staggered Priority Junction**



**Roundabout**



Scan the QR code to visit the A75 Springholm and Crocketford Improvements website:

[www.transport.gov.scot/projects/a75-springholm-and-crocketford-improvements-scheme](http://www.transport.gov.scot/projects/a75-springholm-and-crocketford-improvements-scheme)