



- Legend**
- Proposed scheme (DMRB Stage 3)
 - SuDS
 - Boundaries of the Site
 - Murthly Castle Inventory Garden and Designed Landscape (HLT 14)
 - The Knoll (KLF-1)
 - The Ridge (KLF-2)
 - Muir of Thorn (KLF-3)
 - Gellyburn (KLF-4)
 - The River Tay and floodplain (KLF-5)
 - The Pass of Birnam (KLF-6)
 - Birnam Hill (KLF-7)
 - Keppie Wood (KLF-8)
 - Birnam Burn (KLF-9)
 - Valley (KLF-10)

P03	MAY 2025	For Stage Approval	MM	JD	GK	EM
Rev.	Rev. Date	Purpose of revision	Orig/Dwn	Checked	Rev'd	Apprv'd
Jacobs 95 Bothwell Street, Glasgow, G2 7EX, UK. Tel: +44(0)141 243 8000 www.jacobs.com						
Client						
 TRANSPORT SCOTLAND CÒRRAIDHAIL ALBA						
Project						
 A9 DUALLING TAY CROSSING TO BALLINLUIG						
Drawing title						
Environmental Impact Assessment Report Murthly Castle Garden and Designed Landscape (HLT 14) Key Landscape Features Sheet 1 of 5						
Drawing Status						
Scale						
Jacobs No.						
BIM No.						
Drawing number						
Figure 9.3a						Rev P03

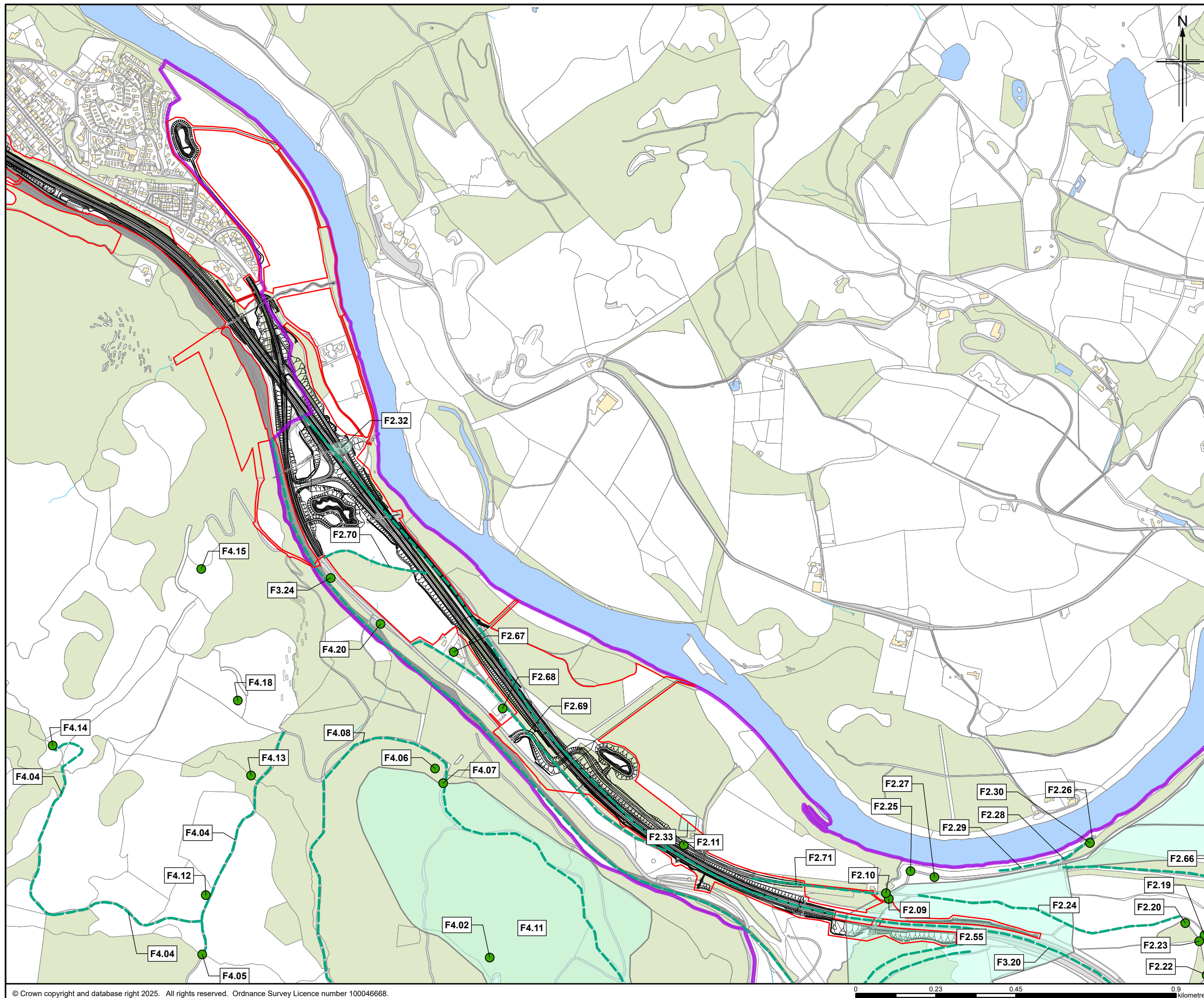
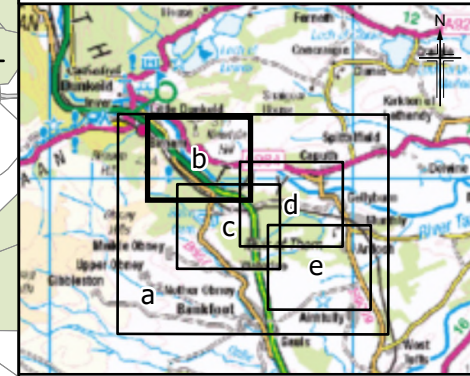







Figure 9.3b



Legend

-  Proposed scheme (DMRB Stage 3)
-  SuDS
-  Boundaries of the Site
-  Murthly Castle Inventory Garden and Designed Landscape (HLT 14)
- 
-  } Special Features
- 

P03	MAY 2025	For Stage Approval	MM	JD	GK	EM
Rev.	Rev. Date	Purpose of revision	Orig/Dwn	Checkd	Rev'd	Apprv'd

Jacobs

95 Bothwell Street, Glasgow, G2 7HX, UK.
Tel: +44(0)141 243 8000
www.jacobs.com

Client	
--------	--



	Project
--	---------



Drawing title

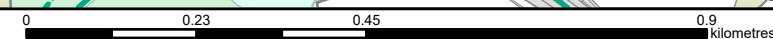
Environmental Impact Assessment Report Murthly Castle Garden and Designed Landscape (HLT 14) Special Features

Sheet 2 of 5

Drawing Status		S4 - For Stage Approval	
Scale	1:10,000	@ A3	DO NOT SCALE
Jacobs No.	B2140002		
BIM No.	A9P02-JAC-EHR-D_ZZZZZ_ZZ-FG-EN-0003		
Drawing number	Figure 9.3b		Rev P03

© Crown copyright 2025. You may re-use this information (excluding logos) free of charge in any format or medium, under the terms of the Open Government Licence. To view this licence, visit <http://www.nationalarchives.gov.uk/doc/open-government-licence/version/3> or e-mail: psi@nationalarchives.gsi.gov.uk. Where we have identified any third party copyright information you will need to obtain permission from the copyright holders concerned.

Limitation: This drawing has been prepared on behalf of, and for the exclusive use of Jacobs' Client. The subject matter contained in this drawing is the confidential property of Jacobs and the Client. Jacobs accepts no liability or responsibility whatsoever for, or in respect of, any use of, or reliance upon, this drawing by any third party.



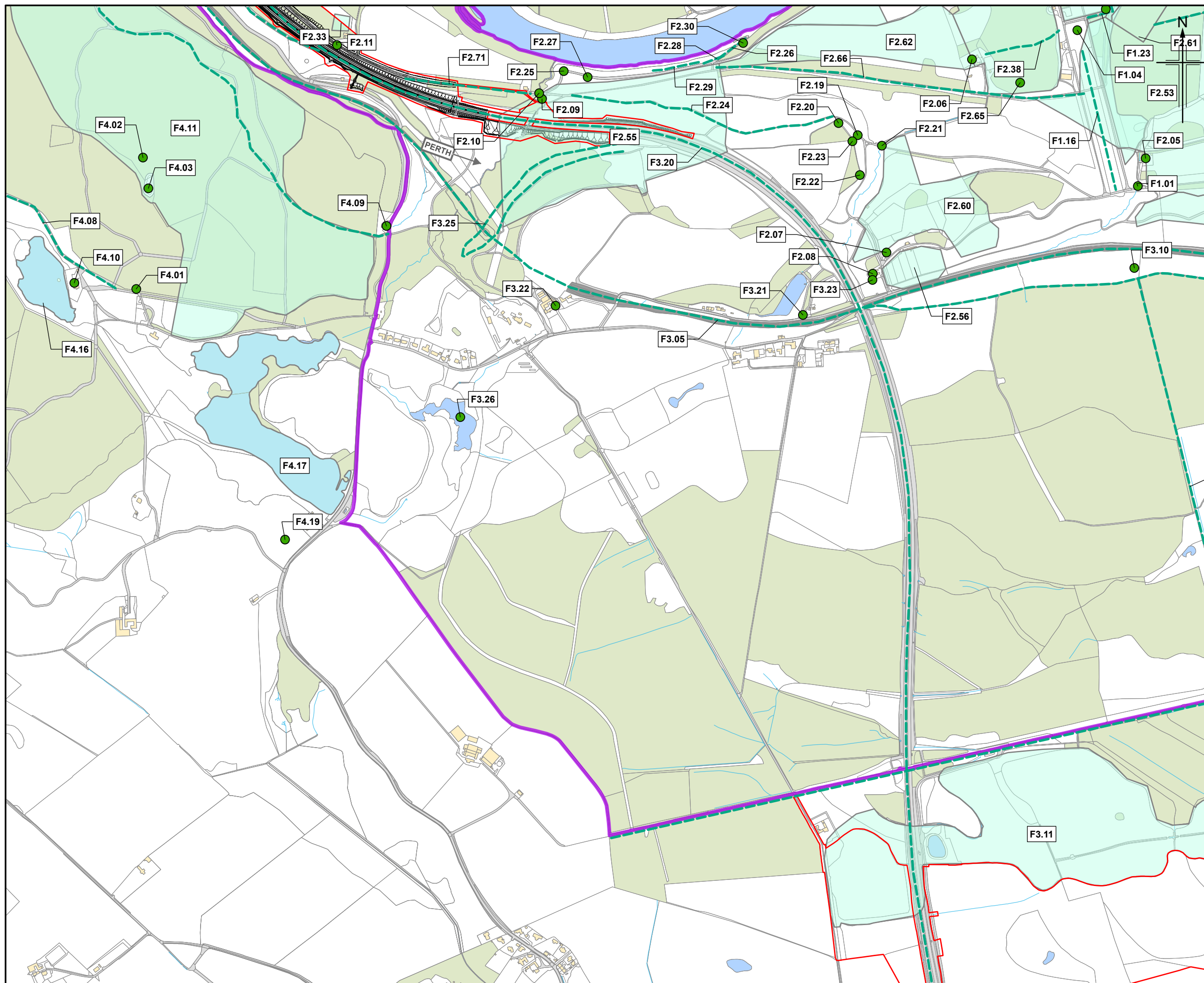
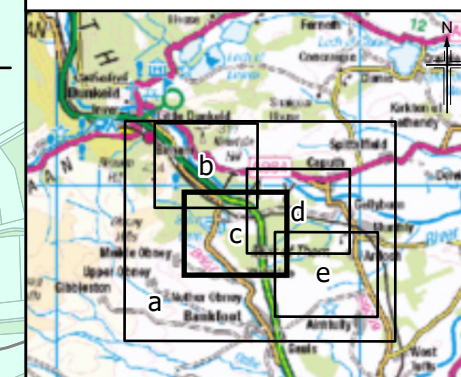








Figure 9.3c



Legend

-  Proposed scheme (DMRB Stage 3)
-  SuDS
-  Boundaries of the Site
-  Murthly Castle Inventory Garden and Designed Landscape (HLT 14)
-   } Special Features

P03	MAY 2025	For Stage Approval	MM	JD	GK	EM
Rev	Rev Date	Purpose of revision	Orig/Dwn	Checkd	Rev'd	Appr'd

Jacobs

95 Bothwell Street, Glasgow, G2 7HX, UK
Tel: +44(0)141 243 8000
www.iacobs.com

	Client
--	--------



TRANSPOR
SCOTLAN
CÒMHDHAIL A

Project



Drawing title

Environmental Impact Assessment Report

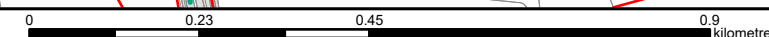
Murthly Castle Garden and Designed Landscape (HLT 14)

Special Features

Sheet 3 of 5

Drawing Status	S4 – For Stage Approval		
Scale	1:10,000	@ A3	DO NOT SCALE
Jacobs No.	B2140002		
BIM No.	A9P02-JAC-EHR-D_ZZZZZ_ZZ-FG-EN-0003		
Drawing number	Figure 9.3c		

© Crown copyright 2025. You may re-use this information (excluding logos) free of charge in any format or medium, under the terms of the Open Government Licence. To view this licence, visit www.nationalarchives.gov.uk/doc/open-government-licence/version/3 or email psi@nationalarchives.gsi.gov.uk. Where we have identified any third party copyright information you will need to obtain permission from the copyright holders concerned. Limitation: This drawing has been prepared on behalf of, and for the exclusive use of, Jacobs Client, and is subject to, and issued in accordance with, the provisions of the contract between Jacobs and the Client. Jacobs accepts no liability or responsibility whatsoever for, or in respect of, any use of, or reliance upon, this drawing by any third party.



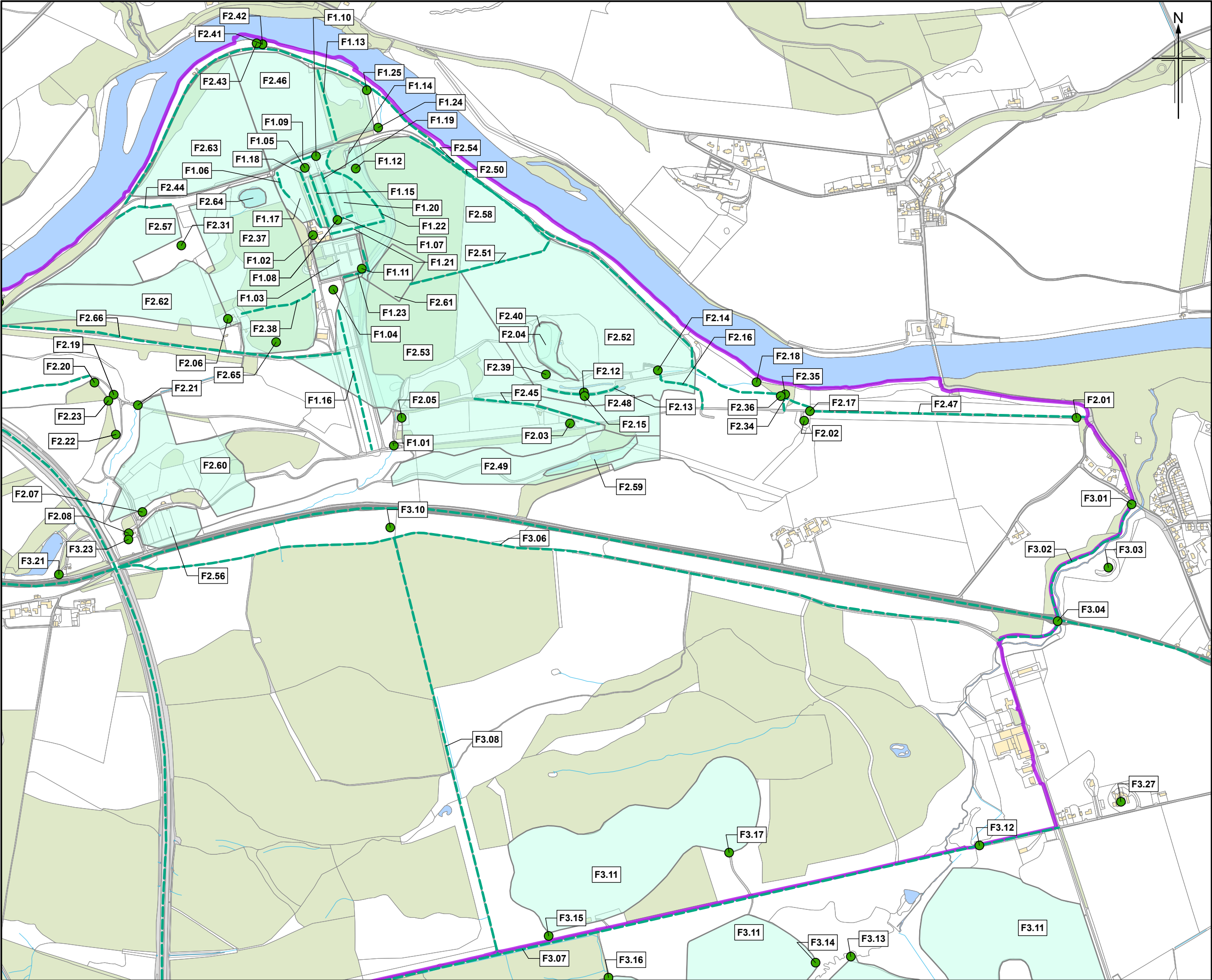


Figure 9.3d

Legend

- Proposed scheme (DMRB Stage 3)
- SuDS
- Boundaries of the Site
- Murthly Castle Inventory Garden and Designed Landscape (HLT 14)
- Special Features

P03	MAY 2025	For Stage Approval	MM	JD	GK	EM
Rev.	Rev. Date	Purpose of revision	Orig/Dwn	Checkd	Rev'd	Apprv'd

Jacobs
95 Bothwell Street, Glasgow G2 7HX, UK.
Tel: +44(0)141 243 8000
www.jacobs.com

Client

Project

A9 DUALLING
TAY CROSSING TO BALLINLUIG

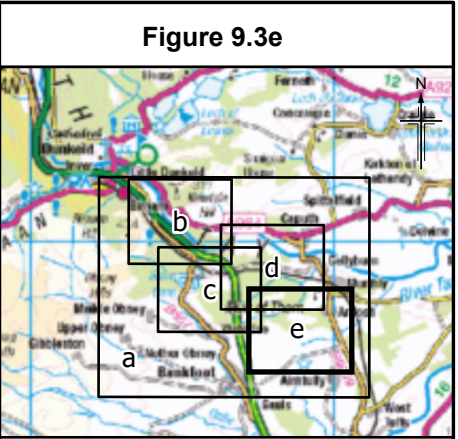
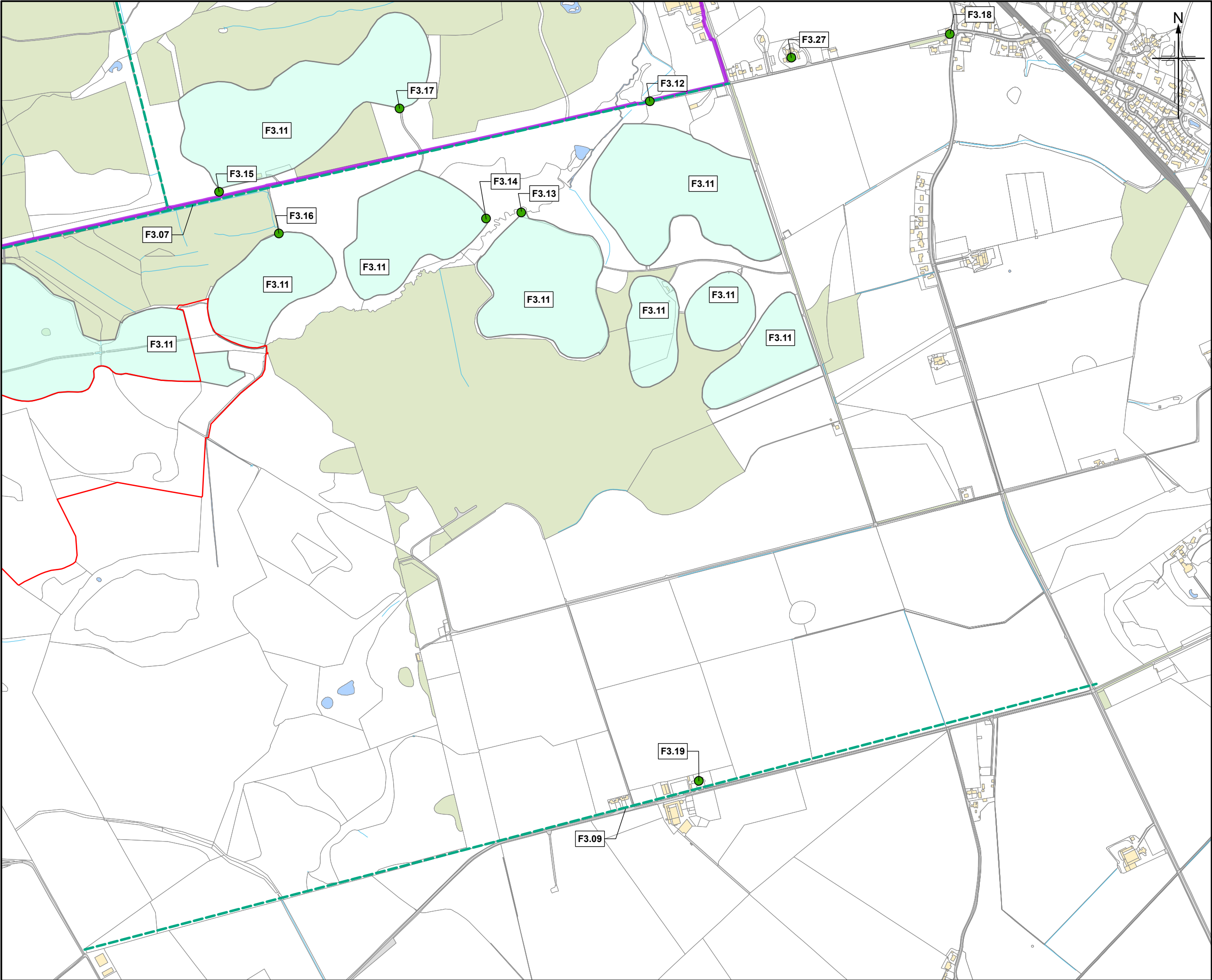
Drawing title

Environmental Impact Assessment Report
Murthly Castle Garden and
Designed Landscape (HLT 14)
Special Features

Sheet 4 of 5

Drawing Status	S4 – For Stage Approval
Scale	1:10,000 @ A3 DO NOT SCALE
Jacobs No.	B2140002
BIM No.	A9P02-JAC-EHR-D_ZZZZZ_ZZ-FG-EN-0003
Drawing number	Figure 9.3d
Rev	P03

© Crown copyright 2025. You may re-use this information (excluding logos) free of charge in any format or medium, under the terms of the Open Government Licence. To view this licence, visit <http://www.nationalarchives.gov.uk/doc/open-government-licence/> or e-mail: psi@nationalarchives.gsi.gov.uk. Where we have identified any third party copyright information you will need to obtain permission from the copyright holders concerned. Limitation: This drawing has been prepared on behalf of, and for the exclusive use of Jacobs' Client, and is subject to, and issued in accordance with, the provisions of the contract between Jacobs and the Client. Jacobs accepts no liability or responsibility whatsoever for, or in respect of, any use of, or reliance upon, this drawing by any third party.



Legend

- Proposed scheme (DMRB Stage 3)
- SuDS
- Boundaries of the Site
- Murthly Castle Inventory Garden and Designed Landscape (HLT 14)
- Special Features

P03	MAY 2025	For Stage Approval	MM	JD	GK	EM
Rev.	Rev. Date	Purpose of revision	Orig/Dwnl	Checkd	Rev'd	Apprv'd

Jacobs
95 Bothwell Street, Glasgow G2 7HX, UK.
Tel: +44(0)141 243 8000
www.jacobs.com

Client

TRANSPORT SCOTLAND
CORRIDOR ALBA

Project

A9 DUALLING
TAY CROSSING TO BALLINLUIG

Drawing title

Environmental Impact Assessment Report
Murthly Castle Garden and
Designed Landscape (HLT 14)
Special Features

Drawing Status	S4 – For Stage Approval
Scale	1:10,000 @ A3 DO NOT SCALE
Jacobs No.	B2140002
BIM No.	A9P02-JAC-EHR-D_ZZZZZ_ZZ-FG-EN-0003
Drawing number	Figure 9.3e
Rev	P03

© Crown copyright and database right 2025. You may re-use this information (excluding logos) free of charge in any format or medium, under the terms of the Open Government Licence. To view this licence, visit <http://www.nationalarchives.gov.uk/doc/open-government-licence/> or e-mail: psi@nationalarchives.gsi.gov.uk. Where we have identified any third party copyright information you will need to obtain permission from the copyright holders concerned. Limitation: This drawing has been prepared on behalf of, and for the exclusive use of Jacobs' Client, and is subject to, and issued in accordance with, the provisions of the contract between Jacobs and the Client. Jacobs accepts no liability or responsibility whatsoever for, or in respect of, any use of, or reliance upon, this drawing by any third party.