

Legend

- Proposed Scheme
- SuDS
- Boundaries of the Site

P03	MAY 2025	For Stage Approval	HCH	PG	GK	EM
Rev.	Rev. Date	Purpose of revision	Orig/Dwn	Checkd	Rev'd	Apprv'd

Jacobs
95 Bolnisi Street, Glasgow, G2 7HX, UK.
Tel: +44(0)141 243 8000
www.jacobs.com

Client

Project

Drawing title

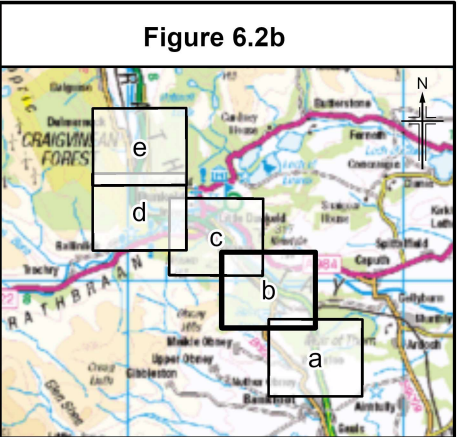
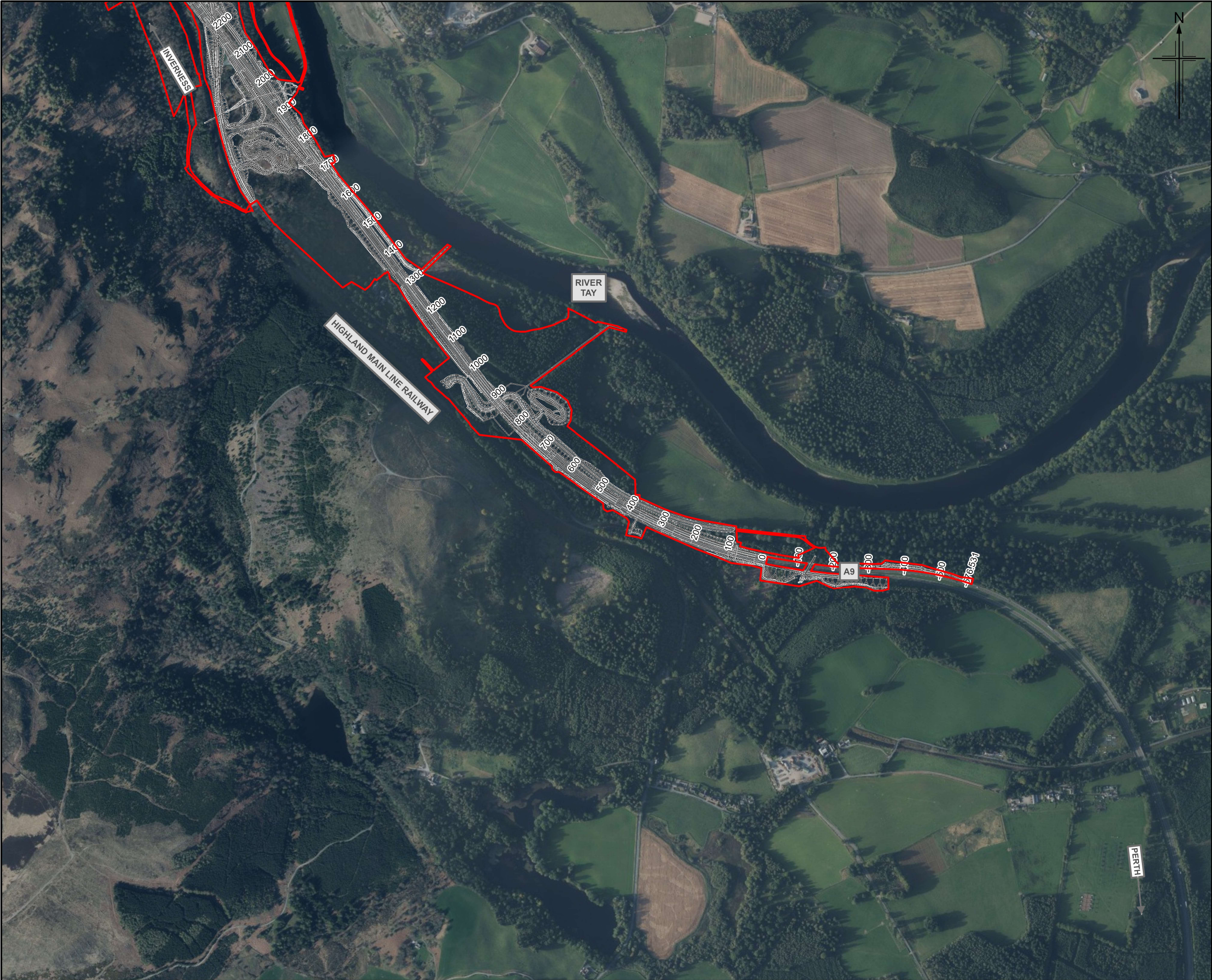
Environmental Impact Assessment Report
Pass of Birnam to Tay Crossing
Indicative Boundaries of Site

Sheet 1 of 5

Drawing Status	S4 - For Stage Approval	Rev
Scale	1:10,000 @ A3	DO NOT SCALE
Jacobs No.	B2140002	
BIM No.	A9P02-JAC-EAC-D_ZZZZZ_ZZ-FG-EN-0004	
Drawing number	Figure 6.2a	Rev P03

© Crown copyright 2025. You may re-use this information (excluding logos) free of charge in any format or medium, under the terms of the Open Government Licence. To view this licence, visit <http://www.nationalarchives.gov.uk/doc/open-government-licence/> or e-mail: psi@nationalarchives.gsi.gov.uk. Where we have identified any third party copyright information you will need to obtain permission from the copyright holders concerned. Limitation: This drawing has been prepared on behalf of, and for the exclusive use of Jacobs' Client, and is subject to, and issued in accordance with, the provisions of the contract between Jacobs and the Client. Jacobs accepts no liability or responsibility whatsoever for, or in respect of, any use of, or reliance upon, this drawing by any third party.





- Legend**
- Proposed Scheme
 - SuDS
 - Boundaries of the Site

Rev.	Rev. Date	Purpose of revision	Orig/Dwn	Checkd	Rev'd	Appr'd
P03	MAY 2025	For Stage Approval				

Jacobs
95 Botolph Street, Glasgow, G2 7HX, UK.
Tel: +44(0)141 243 8000
www.jacobs.com



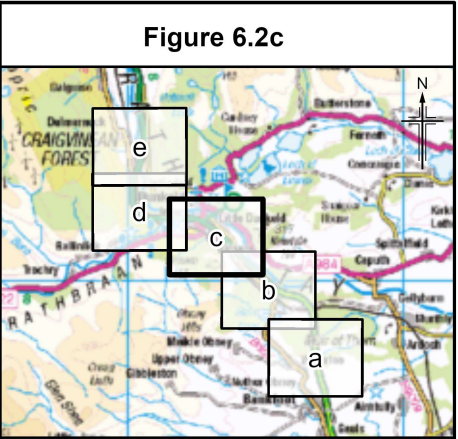
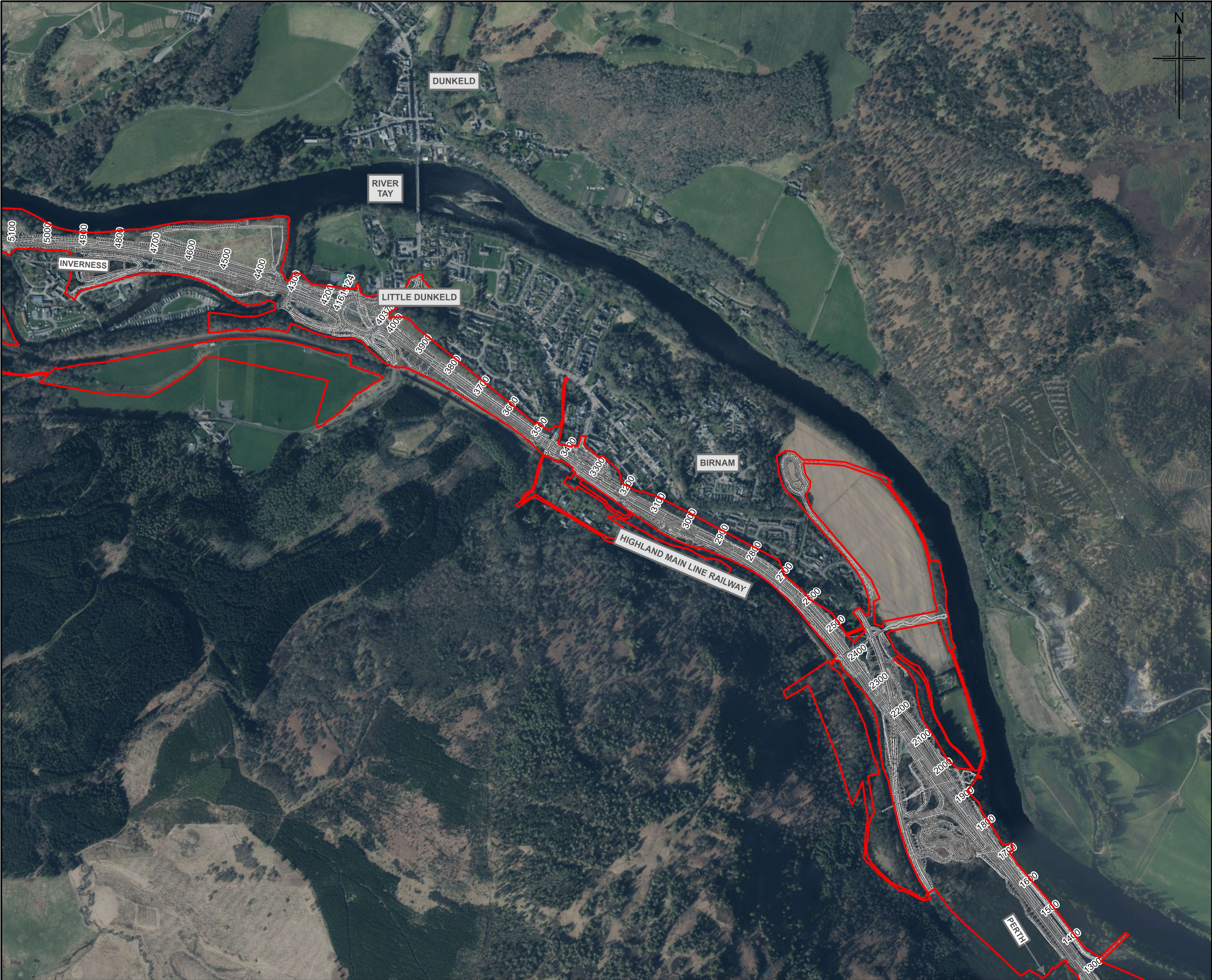
Drawing title

Environmental Impact Assessment Report
Pass of Birnam to Tay Crossing
Indicative Boundaries of Site

Sheet 2 of 5

Drawing Status	S4 - For Stage Approval	Rev
Scale	1:10,000 @ A3	DO NOT SCALE
Jacobs No.	B2140002	
BIM No.	A9P02-JAC-EAC-D_ZZZZZ_ZZ-FG-EN-0004	
Drawing number	Figure 6.2b	Rev P03

© Crown copyright 2025. You may re-use this information (excluding logos) free of charge in any format or medium, under the terms of the Open Government Licence. To view this licence, visit <http://www.nationalarchives.gov.uk/doc/open-government-licence/> or e-mail: psi@nationalarchives.gsi.gov.uk. Where we have identified any third party copyright information you will need to obtain permission from the copyright holders concerned. Limitation: This drawing has been prepared on behalf of, and for the exclusive use of Jacobs' Client, and is subject to, and issued in accordance with, the provisions of the contract between Jacobs and the Client. Jacobs accepts no liability or responsibility whatsoever for, or in respect of, any use of, or reliance upon, this drawing by any third party.



- Legend**
- Proposed Scheme
 - SuDS
 - Boundaries of the Site

P03	MAY 2025	For Stage Approval	HCH	PG	GK	EM
Rev.	Rev. Date	Purpose of revision	Orig/Dwn	Checkd	Rev'd	Apprv'd

Jacobs
95 Bolnisi Street, Glasgow, G2 7HX, UK.
Tel: +44(0)141 243 8000
www.jacobs.com

Client

TRANSPORT SCOTLAND
CÒRPHAIL ALBA

Project

A9 DUALLING
PASS OF BIRNAM TO TAY CROSSING

Drawing title

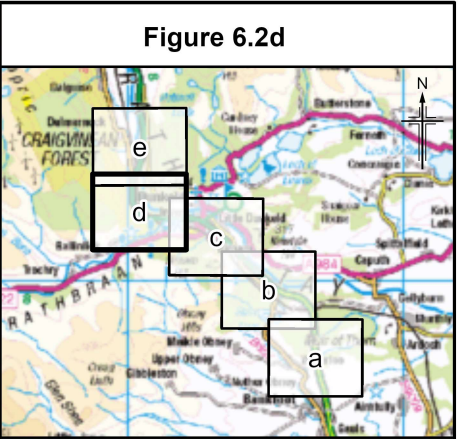
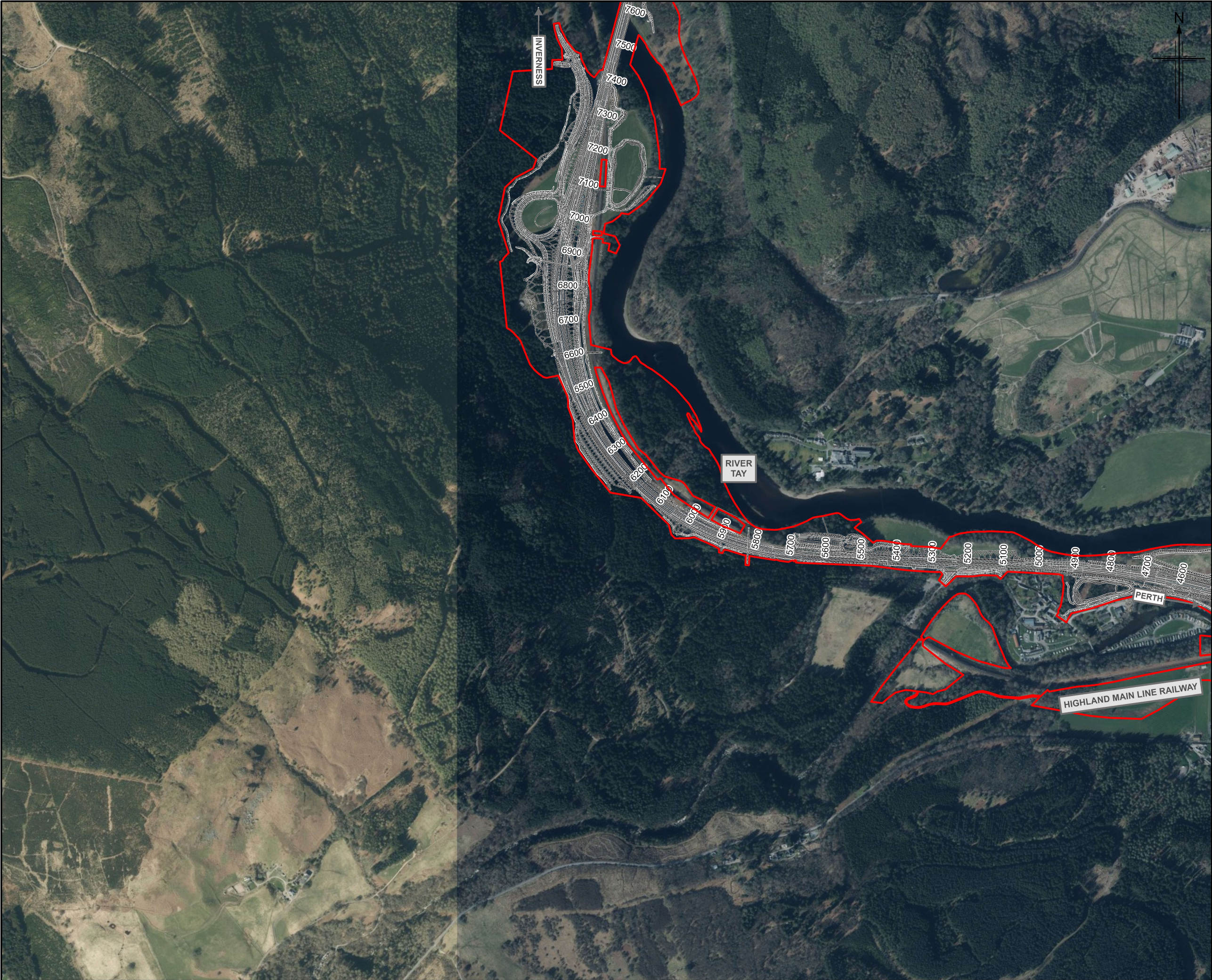
Environmental Impact Assessment Report
Pass of Birnam to Tay Crossing
Indicative Boundaries of Site

Sheet 3 of 5

Drawing Status	S4 - For Stage Approval	
Scale	1:10,000 @ A3	DO NOT SCALE
Jacobs No.	B2140002	
BIM No.	A9P02-JAC-EAC-D_ZZZZZ_ZZ-FG-EN-0004	
Drawing number	Figure 6.2c	Rev P03

© Crown copyright 2025. You may re-use this information (excluding logos) free of charge in any format or medium, under the terms of the Open Government Licence. To view this licence, visit <http://www.nationalarchives.gov.uk/doc/open-government-licence/> or e-mail: psi@nationalarchives.gsi.gov.uk. Where we have identified any third party copyright information you will need to obtain permission from the copyright holders concerned. Limitation: This drawing has been prepared on behalf of, and for the exclusive use of Jacobs' Client, and is subject to, and issued in accordance with, the provisions of the contract between Jacobs and the Client. Jacobs accepts no liability or responsibility whatsoever for, or in respect of, any use of, or reliance upon, this drawing by any third party.





- Legend**
- Proposed Scheme
 - SuDS
 - Boundaries of the Site

P03	MAY 2025	For Stage Approval	HCH	PG	GK	EM
Rev.	Rev. Date	Purpose of revision	Orig/Dwn	Checkd	Rev'd	Apprv'd

Jacobs
95 Botwell Street, Glasgow, G2 7HX, UK.
Tel: +44(0)141 243 8000
www.jacobs.com

Client

TRANSPORT SCOTLAND
CÒRPHAIL ALBA

Project

A9 DUALLING
PASS OF BIRNAM TO TAY CROSSING

Drawing title

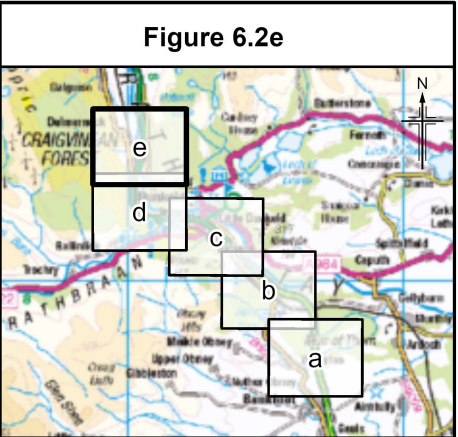
Environmental Impact Assessment Report
Pass of Birnam to Tay Crossing
Indicative Boundaries of Site

Sheet 4 of 5

Drawing Status	S4 - For Stage Approval	Rev
Scale	1:10,000 @ A3	DO NOT SCALE
Jacobs No.	B2140002	
BIM No.	A9P02-JAC-EAC-D_ZZZZZ_ZZ-FG-EN-0004	
Drawing number	Figure 6.2d	Rev P03

© Crown copyright 2025. You may re-use this information (excluding logos) free of charge in any format or medium, under the terms of the Open Government Licence. To view this licence, visit <http://www.nationalarchives.gov.uk/doc/open-government-licence/> or e-mail: psi@nationalarchives.gsi.gov.uk. Where we have identified any third party copyright information you will need to obtain permission from the copyright holders concerned. Limitation: This drawing has been prepared on behalf of, and for the exclusive use of Jacobs' Client, and is subject to, and issued in accordance with, the provisions of the contract between Jacobs and the Client. Jacobs accepts no liability or responsibility whatsoever for, or in respect of, any use of, or reliance upon, this drawing by any third party.





Legend

- Proposed Scheme
- SuDS
- Boundaries of the Site

P03	MAY 2025	For Stage Approval	HCH	PG	GK	EM
Rev.	Rev. Date	Purpose of revision	Orig/Dwn	Checkd	Rev'd	Apprv'd

Jacobs
95 Botolph Street, Glasgow, G2 7HX, UK.
Tel: +44(0)141 243 8000
www.jacobs.com

Client


TRANSPORT
SCOTLAND
CÒRPHAIL ALBA

Project


A9
DUALLING
PASS OF BIRNAM
TO TAY CROSSING

Drawing title

Environmental Impact Assessment Report
Pass of Birnam to Tay Crossing
Indicative Boundaries of Site
Sheet 5 of 5

Drawing Status	S4 - For Stage Approval	Rev
Scale	1:10,000 @ A3	DO NOT SCALE
Jacobs No.	B2140002	
BIM No.	A9P02-JAC-EAC-D_ZZZZ_ZZ-FG-EN-0004	
Drawing number	Figure 6.2e	Rev P03

© Crown copyright 2025. You may re-use this information (excluding logos) free of charge in any format or medium, under the terms of the Open Government Licence. To view this licence, visit <http://www.nationalarchives.gov.uk/doc/open-government-licence/> or e-mail: psi@nationalarchives.gsi.gov.uk. Where we have identified any third party copyright information you will need to obtain permission from the copyright holders concerned. Limitation: This drawing has been prepared on behalf of, and for the exclusive use of Jacobs' Client, and is subject to, and issued in accordance with, the provisions of the contract between Jacobs and the Client. Jacobs accepts no liability or responsibility whatsoever for, or in respect of, any use of, or reliance upon, this drawing by any third party.

